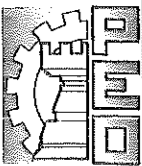


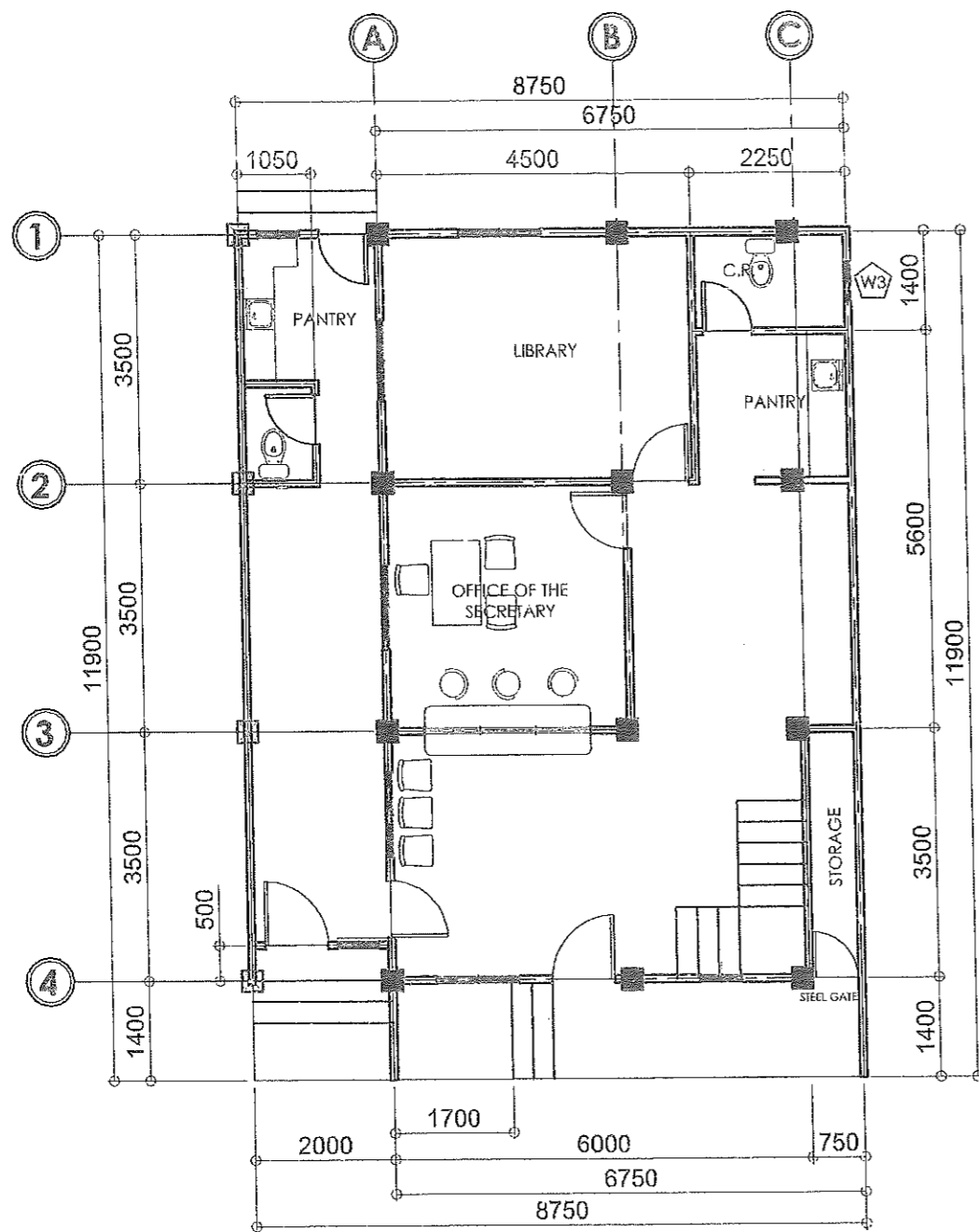
VICINITY MAP  
SCALE: NTS.

# PERSPECTIVE

## PROJECT TITLE & LOCATION :

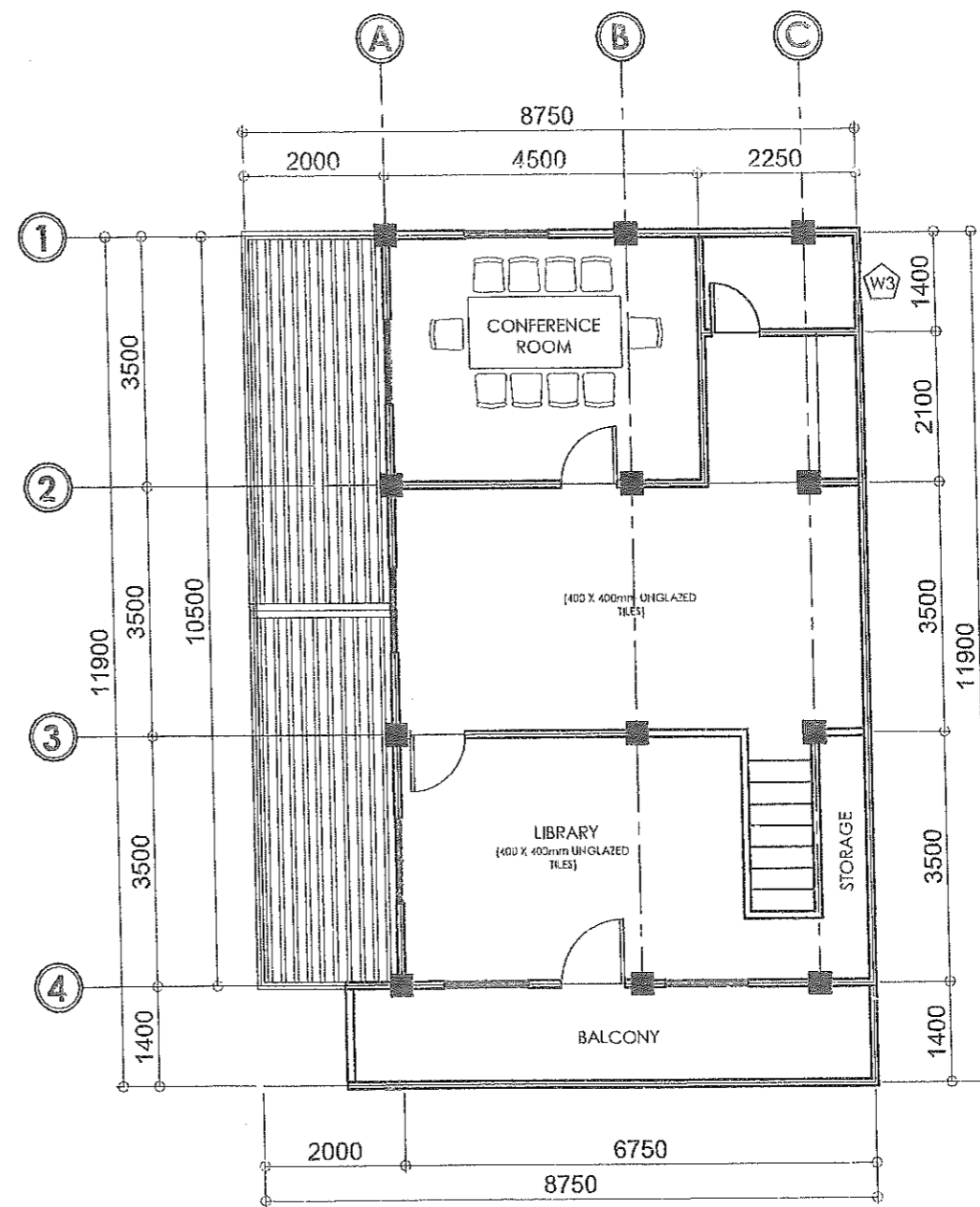
### IMPROVEMENT OF TWO (2) STOREY MULTI-PURPOSE BUILDING AT SANTA LUCIA, SASMUAN , PAMPANGA

	FROM THE OFFICE OF:	PROJECT TITLE:	CAD BY:	PREPARED BY:	CHECKED BY:	VERIFIED & SUBMITTED BY:	RECOMMENDING APPROVAL:	APPROVED BY:	SHEET NO.:
	REPUBLIC OF THE PHILIPPINES PROVINCE OF PAMPANGA <b>PROVINCIAL ENGINEER'S OFFICE</b> CAPITOL COMPOUND, CITY OF SAN FERNANDO, (P)	<b>IMPROVEMENT OF TWO (2) STOREY          MULTI-PURPOSE BUILDING</b>	LOCATION: SANTA LUCIA, SASMUAN, PAMPANGA	IRVIN JOSEF CRUZ ADMINISTRATIVE AIDE VI	MEYNARD Y. LAXA ENGINEERING ASSISTANT	ESMERALDO T. GULAPA ENGINEER IV	WILFREDO A. MANALILI ASSISTANT PROVINCIAL ENGINEER	OLIMPIO M. PANGAN PROVINCIAL ENGINEER	HON. DENNIS G. PINEDA GOVERNOR BY THE AUTHORITY OF THE GOVERNOR: ATTY. CHARLIE G. CHUA PROVINCIAL ADMINISTRATOR



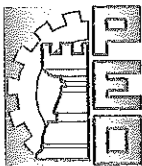
**GROUND FLOOR PLAN (EXISTING)**

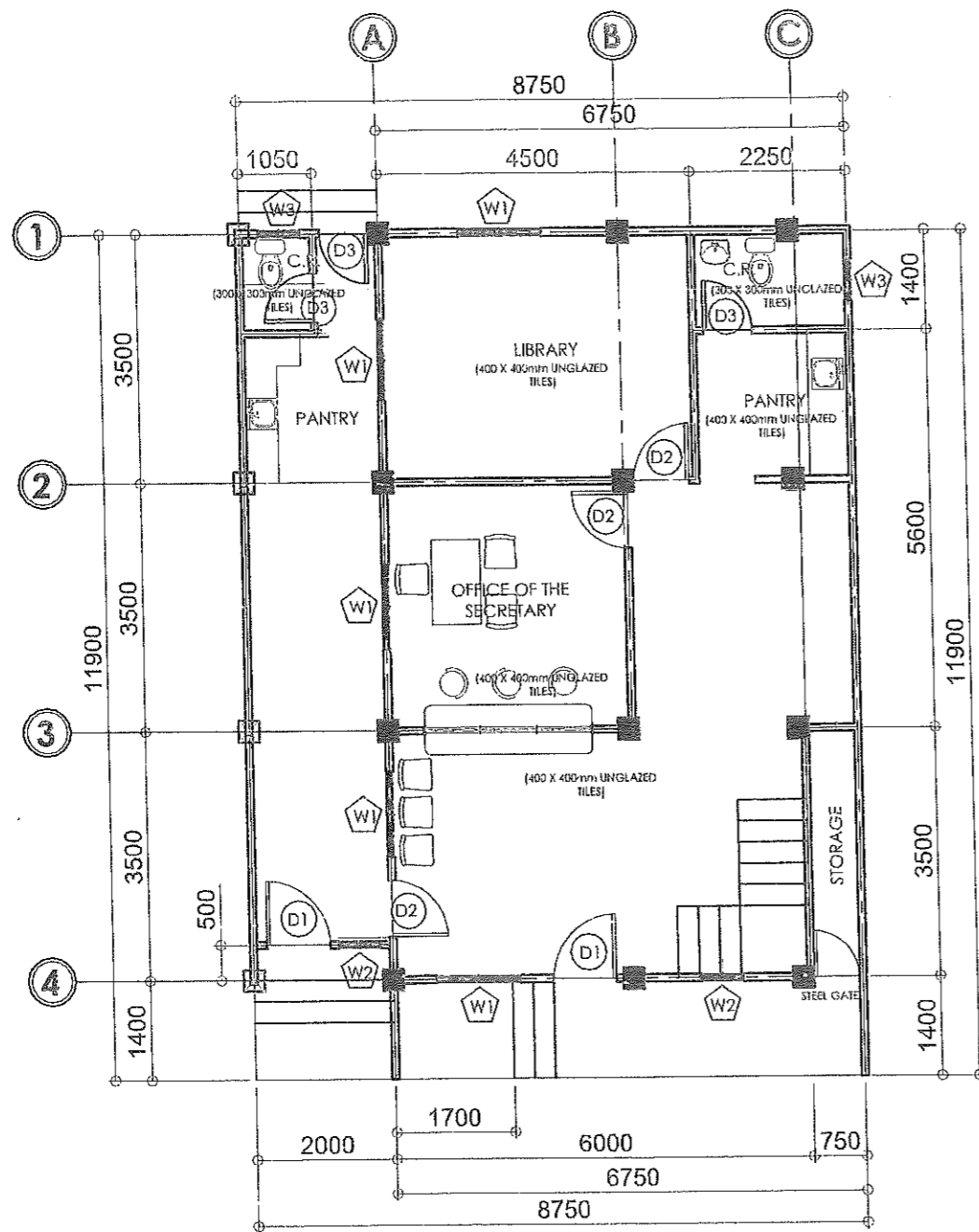
SCALE: 1:100 MTS.



**SECOND FLOOR PLAN (EXISTING)**

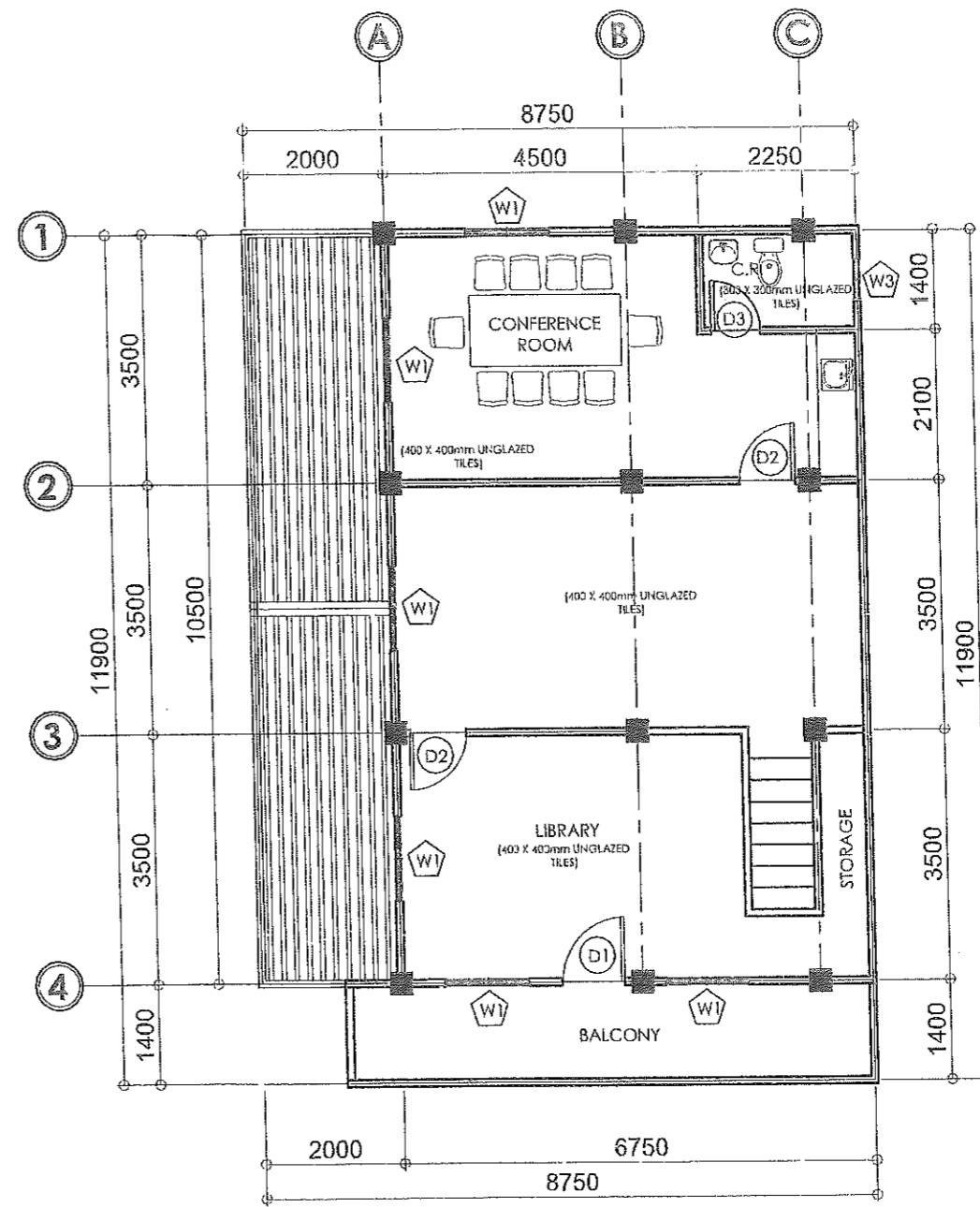
SCALE: 1:100 MTS.

	FROM THE OFFICE OF:	PROJECT TITLE:	CAD BY:	PREPARED BY:	CHECKED BY:	VERIFIED & SUBMITTED BY:	RECOMMENDING APPROVAL:	APPROVED BY:	SHEET NO.:
	REPUBLIC OF THE PHILIPPINES PROVINCE OF PAMPANGA <b>PROVINCIAL ENGINEER'S OFFICE</b> CAPITOL COMPOUND, CITY OF SAN FERNANDO, (P)	<b>IMPROVEMENT OF TWO (2) STOREY          MULTI-PURPOSE BUILDING</b> LOCATION: SANTA LUCIA, SASMUAN, PAMPANGA	IRVIN JOSEF CRUZ ADMINISTRATIVE AIDE VI	KEYMARD Y. LAXA ENGINEERING ASSISTANT	ESMERALDO T. GULAPA ENGINEER IV	WILFREDO A. MANALI ASSISTANT PROVINCIAL ENGINEER	OLIMPIO M. PANGAN PROVINCIAL ENGINEER	HON. DENNIS G. PINEDA GOVERNOR BY THE AUTHORITY OF THE GOVERNOR: ATTY. CHARLIE G. CHUA PROVINCIAL ADMINISTRATOR	A - 2 02 / 14



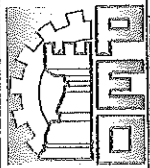
**GROUND FLOOR PLAN**

SCALE: 1:100 MTS.

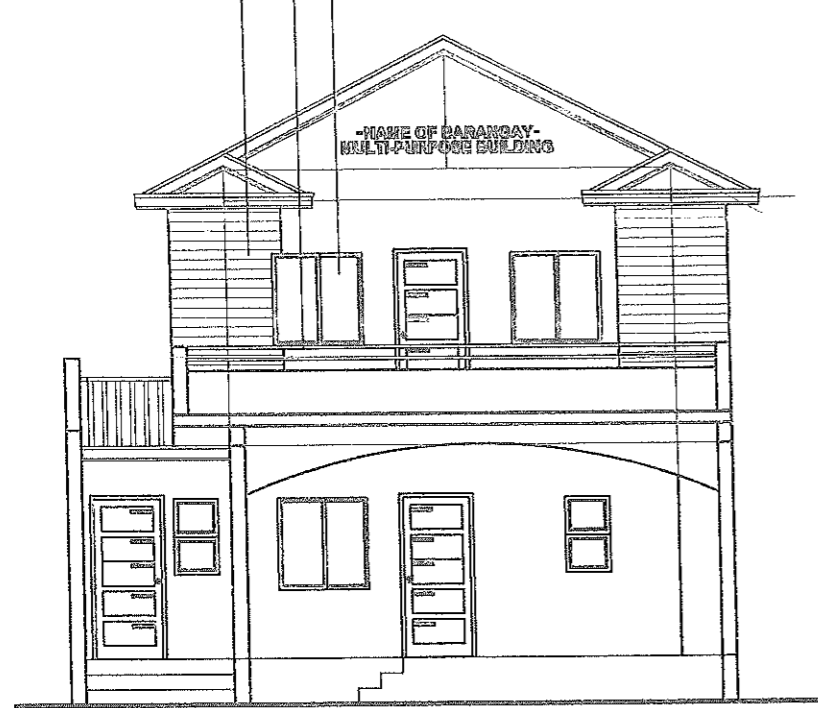


**SECOND FLOOR PLAN**

SCALE: 1:100 MTS.

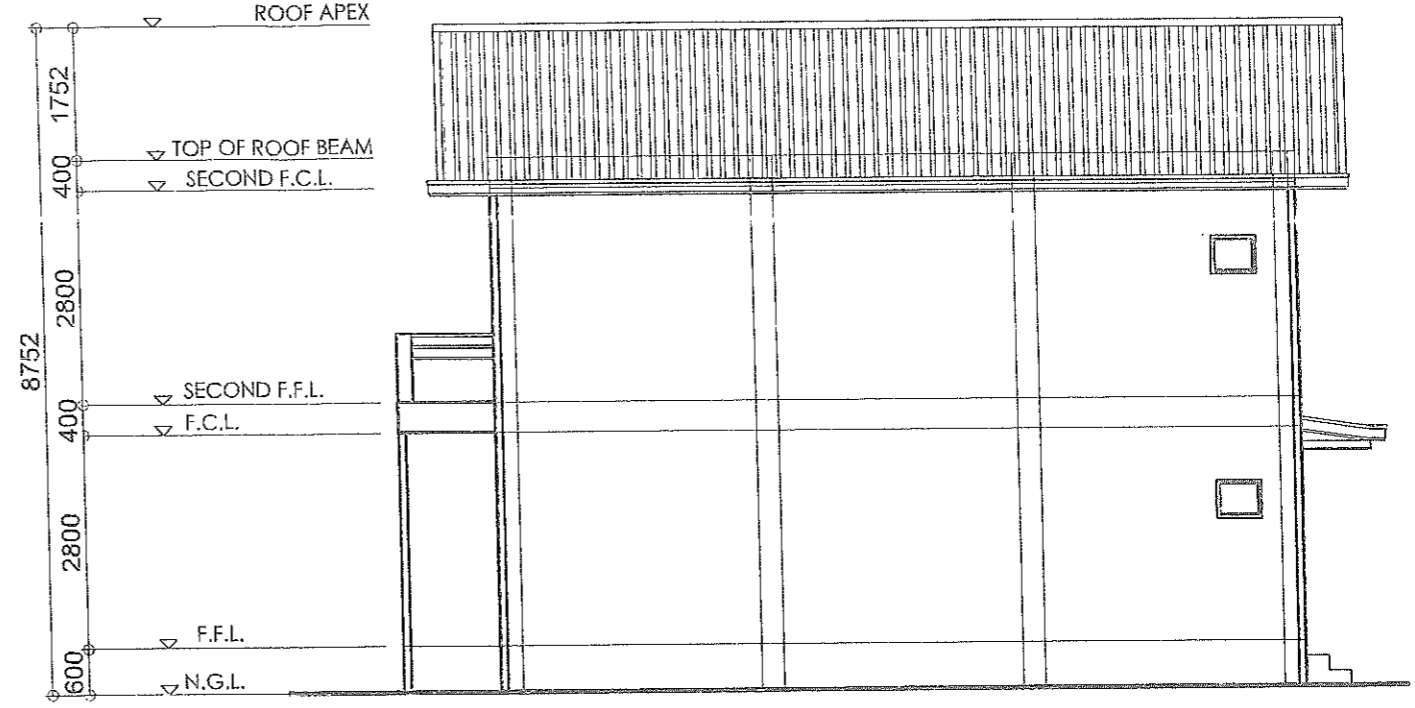
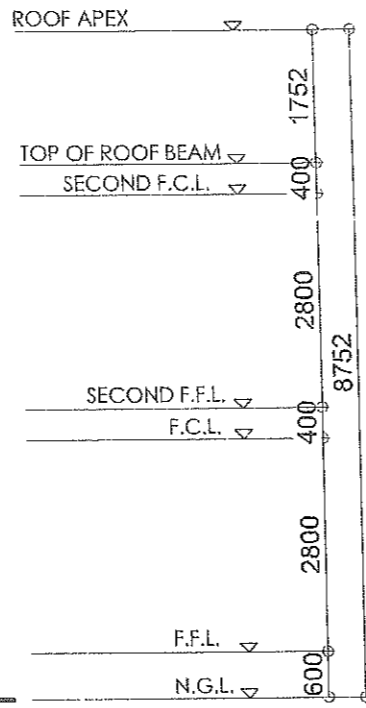
	FROM THE OFFICE OF:	PROJECT TITLE:	CAD BY:	PREPARED BY:	CHECKED BY:	VERIFIED & SUBMITTED BY:	RECOMMENDING APPROVAL:	APPROVED BY:	SHEET NO.:
	REPUBLIC OF THE PHILIPPINES PROVINCE OF PAMPANGA <b>PROVINCIAL ENGINEER'S OFFICE</b> CAPITOL COMPOUND, CITY OF SAN FERNANDO, (P)	<b>IMPROVEMENT OF TWO (2) STOREY          MULTI-PURPOSE BUILDING</b>	IRVIN JOSEF CRUZ ADMINISTRATIVE AIDE VI	MEYWARD Y. LAXA ENGINEERING ASSISTANT	ESMERALDO T. GULAPA ENGINEER IV	WILFREDO A. MANALILI ASSISTANT PROVINCIAL ENGINEER	OLIMPIO M. PANGAN PROVINCIAL ENGINEER	HON. DENNIS G. PINEDA GOVERNOR BY THE AUTHORITY OF THE GOVERNOR: ATTY. CHARIE G. CHUA PROVINCIAL ADMINISTRATOR	A - 3 03 / 14

25mm GROOVES  
 50mm Ø S.S. PIPE RAILING  
 1/4" THK GLASS ON ANALOC  
 FRAME SLIDING TYPE WINDOW



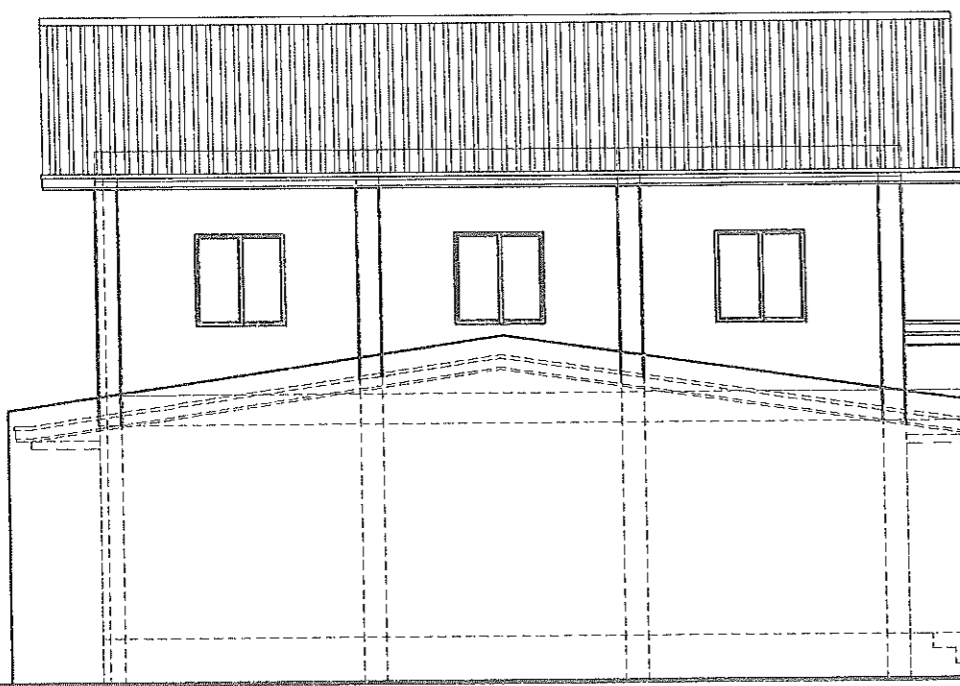
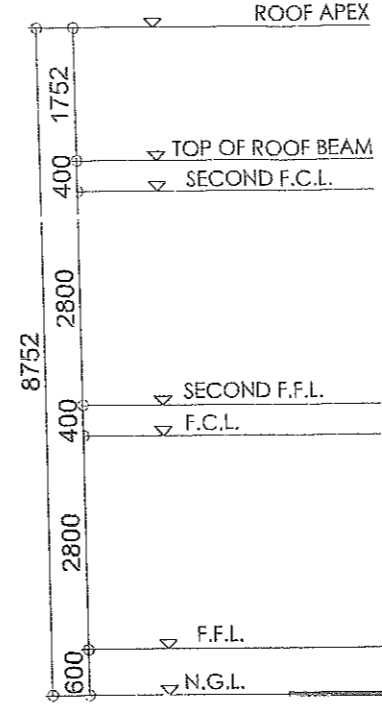
**FRONT ELEVATION**

SCALE: 1:100 MTS.



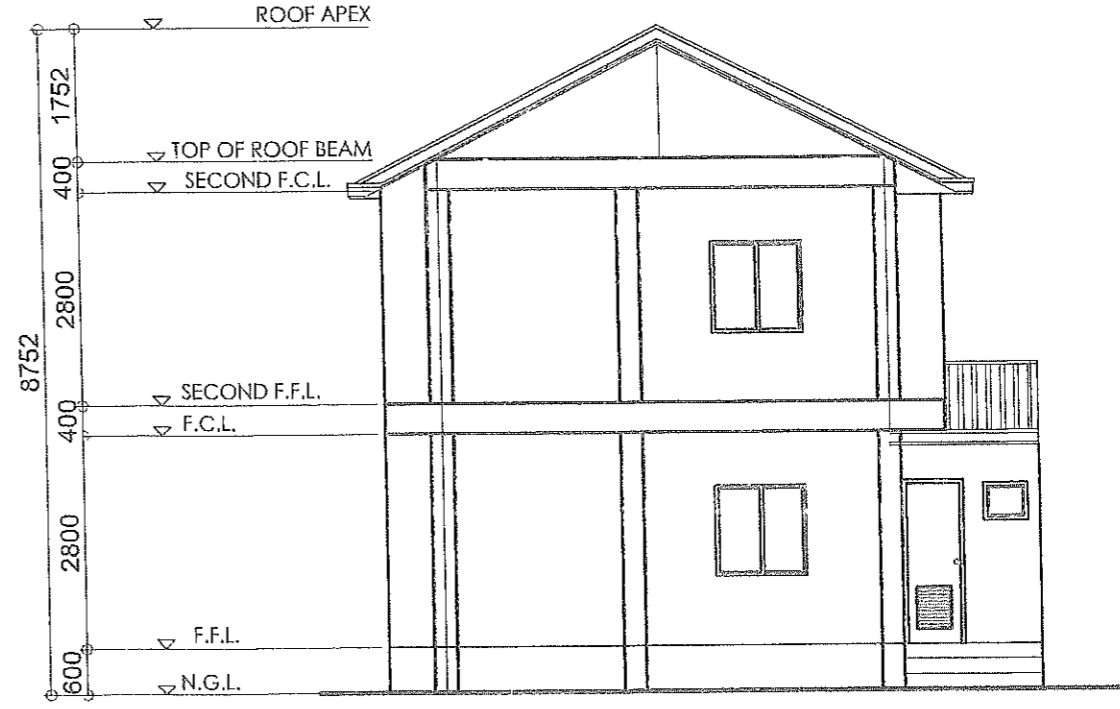
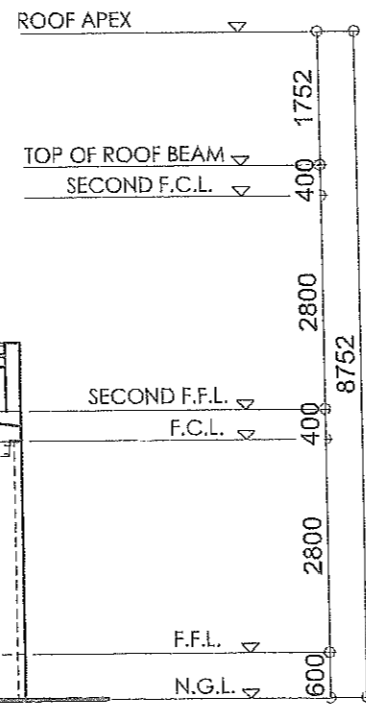
**RIGHT SIDE ELEVATION**

SCALE: 1:100 MTS.



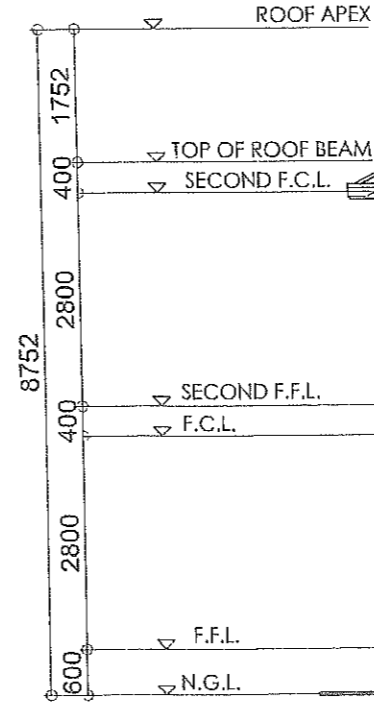
**LEFT SIDE ELEVATION**

SCALE: 1:100 MTS.



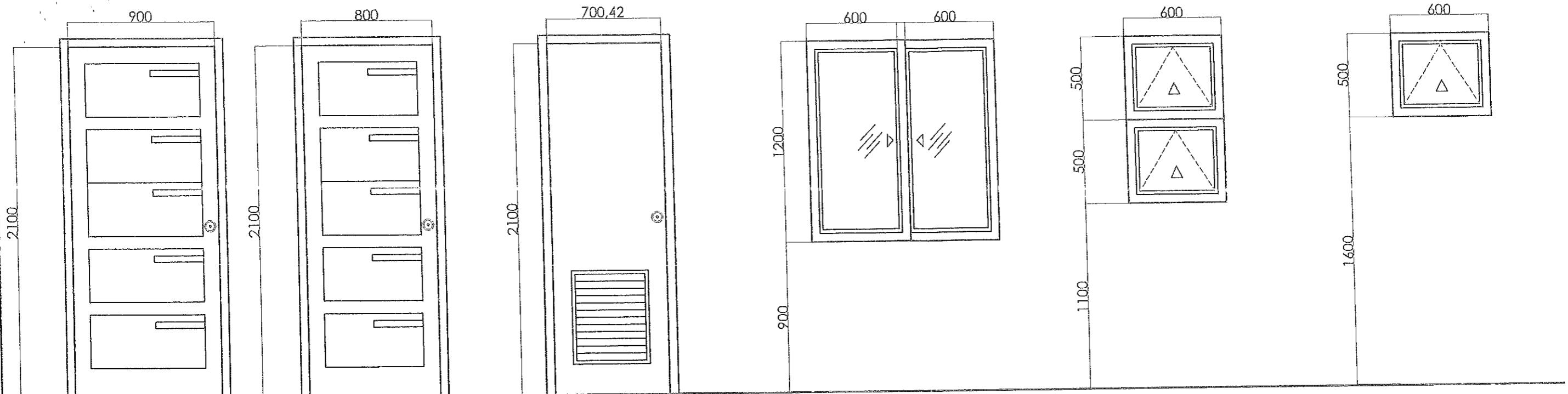
**REAR ELEVATION**

SCALE: 1:100 MTS.



	FROM THE OFFICE OF:	PROJECT TITLE:	CAD BY:	PREPARED BY:	CHECKED BY:	VERIFIED & SUBMITTED BY:	RECOMMENDING APPROVAL:	APPROVED BY:	SHEET NO.:
	REPUBLIC OF THE PHILIPPINES PROVINCE OF PAMPANGA <b>PROVINCIAL ENGINEER'S OFFICE</b> CAPITOL COMPOUND, CITY OF SAN FERNANDO, (P)	<b>IMPROVEMENT OF TWO (2) STOREY          MULTI-PURPOSE BUILDING</b>	 <b>IRVIN JOSEF CRUZ</b> ADMINISTRATIVE AIDE VI	 <b>REYNARD Y. LAXA</b> ENGINEERING ASSISTANT	 <b>ESMERALDO T. GULAPA</b> ENGINEER IV	 <b>WILFREDO A. MANALILI</b> ASSISTANT PROVINCIAL ENGINEER	 <b>OLIMPIO M. PANGAN</b> PROVINCIAL ENGINEER	<b>HON. DENNIS G. PINEDA</b> GOVERNOR BY THE AUTHORITY OF THE GOVERNOR:  <b>ATTY. CHARJIE G. CHUA</b> PROVINCIAL ADMINISTRATOR	<b>A - 4</b> 04 / 14
	LOCATION: SANTA LUCIA, SASMUAN, PAMPANGA								

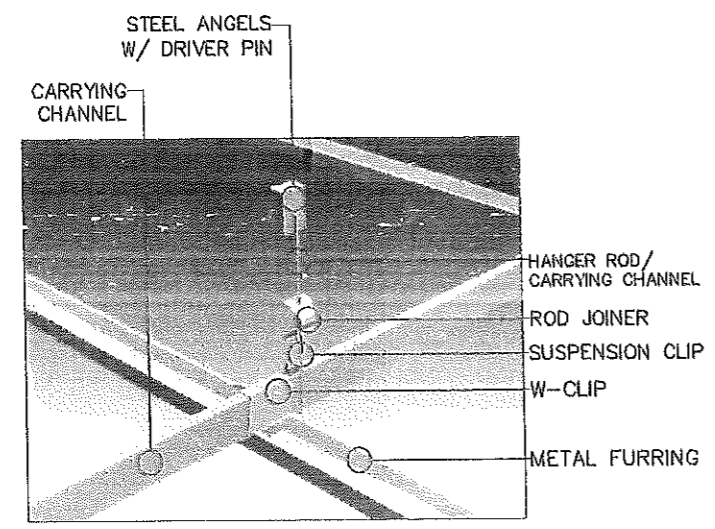




- D1** SOLID PANEL DOOR W/ G.I. JAMB COMPLETE W/ HARDWARE & ACCESSORIES (3 = SETS)
- D2** SOLID PANEL DOOR W/ G.I. JAMB COMPLETE W/ HARDWARE & ACCESSORIES (5 = SETS)
- D3** SOLID PANEL LOUVERS DOOR W/ G.I. JAMB COMPLETE W/ HARDWARE & ACCESSORIES (3 = SETS)
- W1** 1/4" THK GLASS PANELS ON ANALOC FRAME SLIDING WINDOWS (11 = SETS)
- W2** 1/4" THK GLASS PANELS ON ANALOC FRAME FIXED WINDOW (2 = SETS)
- W3** 1/4" THK GLASS PANELS ON ANALOC FRAME AWNING WINDOWS (3 = SETS)

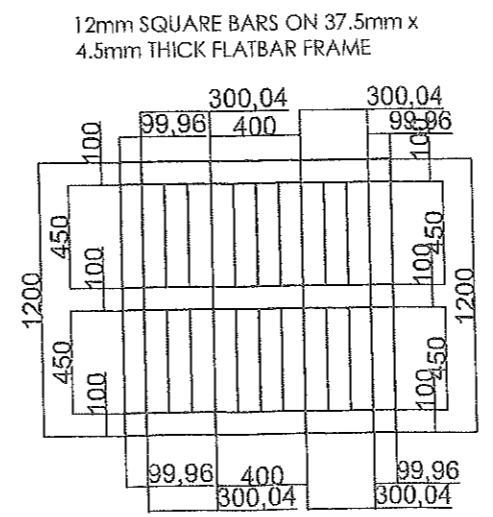
### SCHEDULE OF DOORS AND WINDOWS

SCALE: 1:25 MTS.

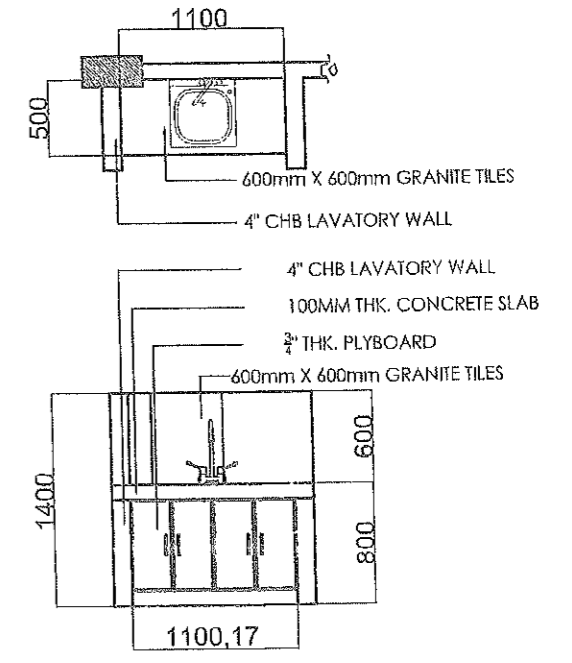


**NOTE:**  
 \* USE 4.50mm THK. FICEM BOARD ON METAL FURRING (400mm X 600mm FRAME) FOR INTERIOR CEILING  
 \* USE 0.50mm THK. SPANDREL FOR EXTERIOR CEILING

**DETAIL OF METAL FURRING**  
 SCALE: N.T.S.



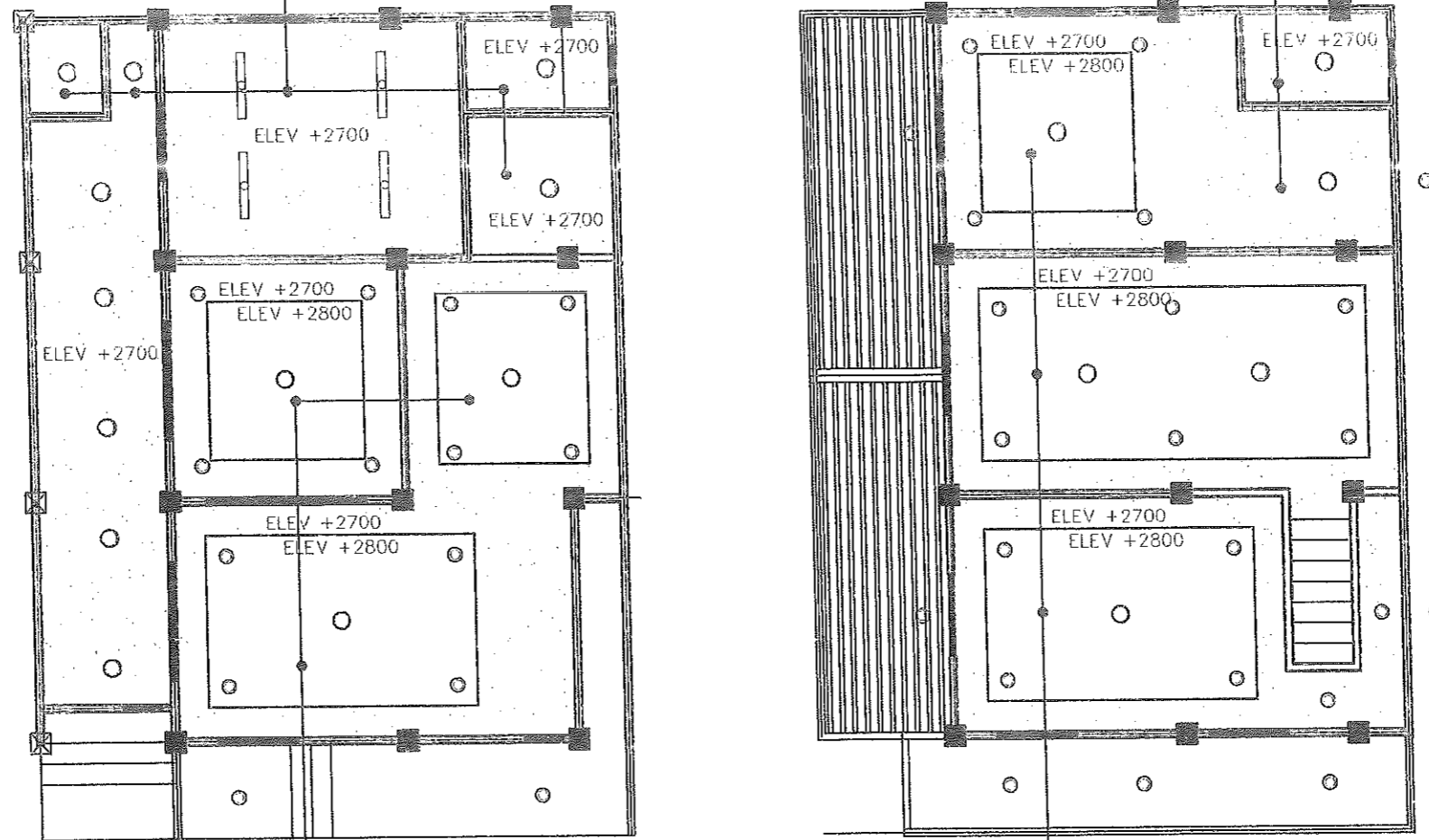
**TYPICAL WINDOW GRILL DETAILS**  
 SCALE: 1:30 MTS.



**DETAIL OF LAVATORY COUNTER**  
 SCALE: 1:50 MTS.

	FROM THE OFFICE OF: REPUBLIC OF THE PHILIPPINES PROVINCE OF PAMPANGA <b>PROVINCIAL ENGINEER'S OFFICE</b> CAPITOL COMPOUND, CITY OF SAN FERNANDO, (P)	PROJECT TITLE: <b>IMPROVEMENT OF TWO (2) STOREY MULTI-PURPOSE BUILDING</b> LOCATION: SANTA LUCIA, SASMUAN, PAMPANGA	CAD BY:  <b>IRVIN JOSEF CRUZ</b> ADMINISTRATIVE AIDE VI	PREPARED BY:  <b>MEYNARD Y. LAXA</b> ENGINEERING ASSISTANT	CHECKED BY:  <b>ESMERALDO T. GULAPA</b> ENGINEER IV	VERIFIED & SUBMITTED BY:  <b>WILFREDO A. MANALILI</b> ASSISTANT PROVINCIAL ENGINEER	RECOMMENDING APPROVAL:  <b>OLIMPIO M. PANGAN</b> PROVINCIAL ENGINEER	APPROVED BY: <b>HON. DENNIS G. PINEDA</b> GOVERNOR BY THE AUTHORITY OF THE GOVERNOR:  <b>ATTY. CHARLES G. CHUA</b> PROVINCIAL ADMINISTRATOR	SHEET NO.: <b>A - 5</b> <b>05 / 14</b>
--	--	--	--	---	--	--	---	---	--

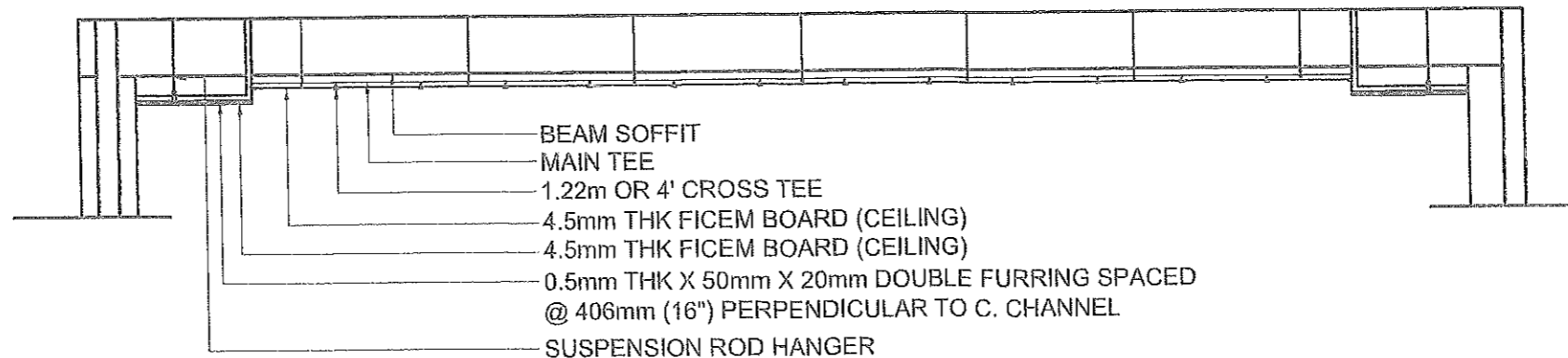
4.5mm THICK HARDIFLEX  
ON METAL CEILING JOIST @  
400mm O.C. and INTERMEDIATE  
METAL CHANNEL @ 1200mm O.C.



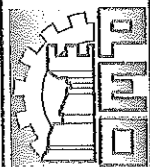
4.5mm THK,  
0.5 NR FICEM BOARD

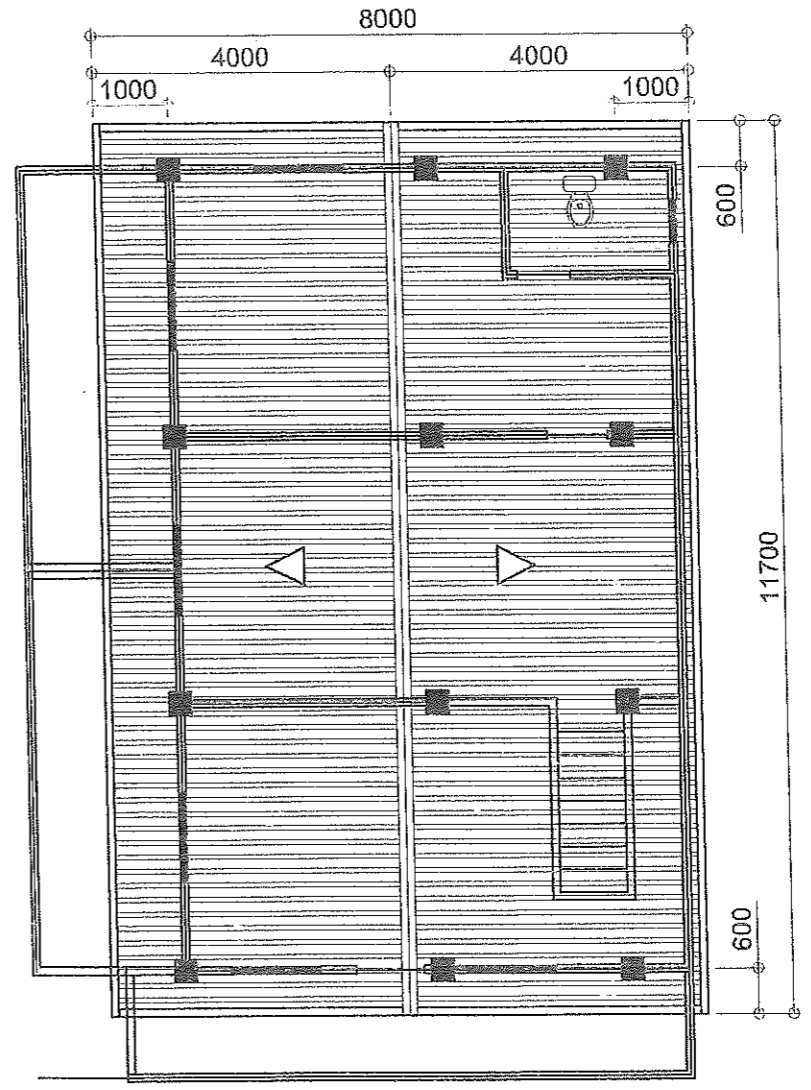
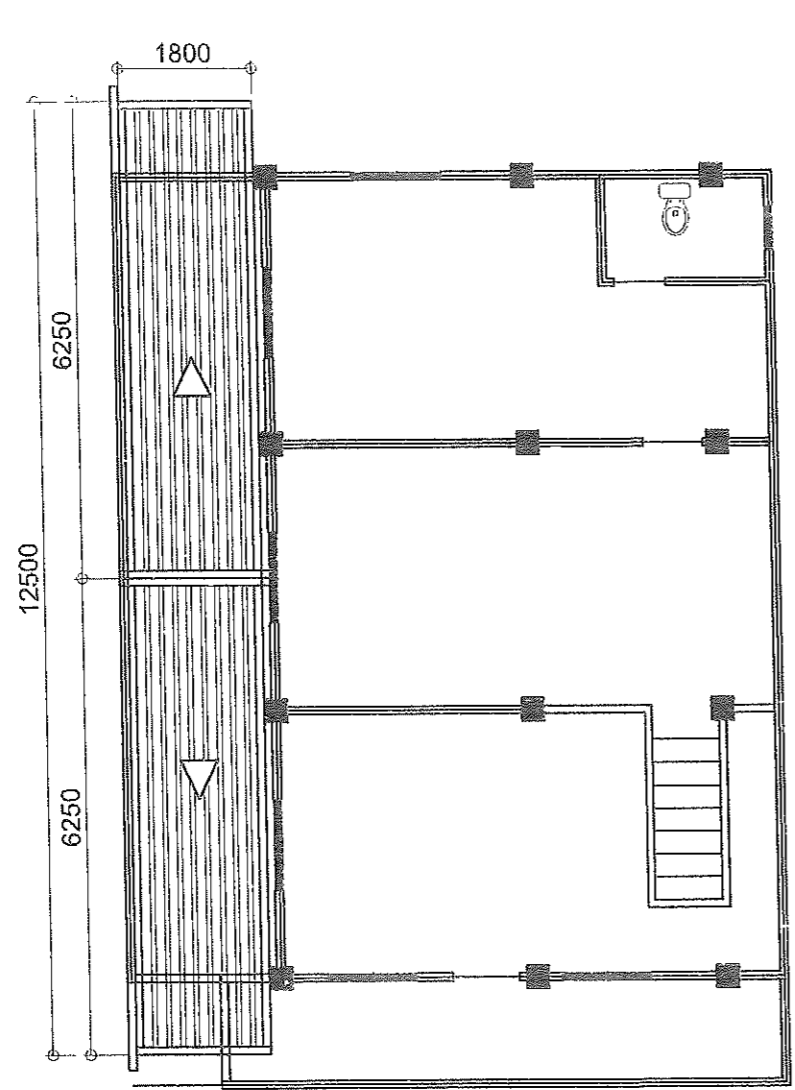
**REFLECTED CEILING PLAN**

SCALE: 1:100 MTS.



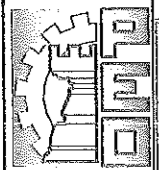
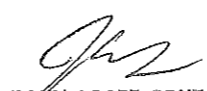

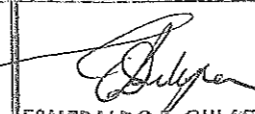
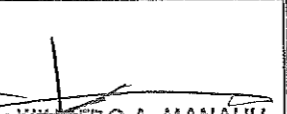
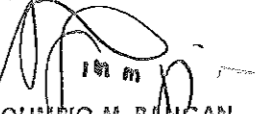


**SECTION**

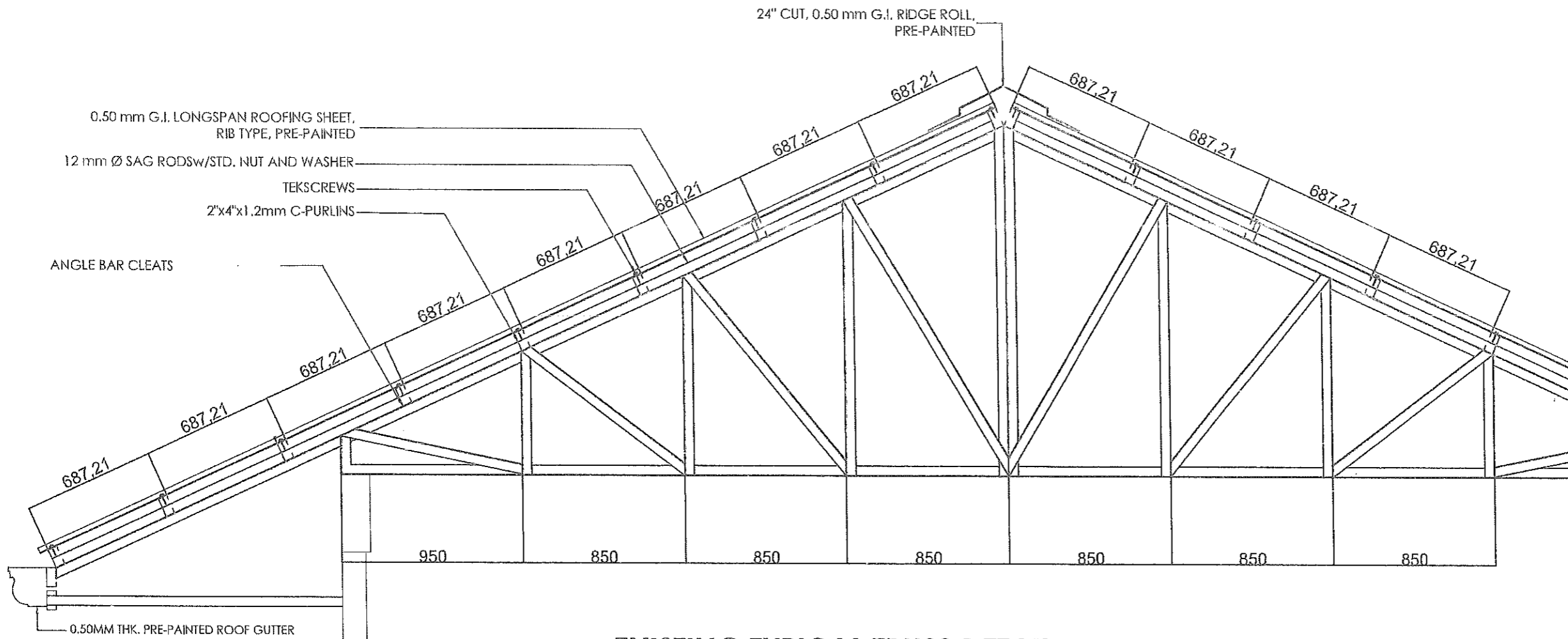
	FROM THE OFFICE OF:	PROJECT TITLE:	CAD BY:	PREPARED BY:	CHECKED BY:	VERIFIED & SUBMITTED BY:	RECOMMENDING APPROVAL:	APPROVED BY:	SHEET NO.:
	REPUBLIC OF THE PHILIPPINES PROVINCE OF PAMPANGA <b>PROVINCIAL ENGINEER'S OFFICE</b> CAPITOL COMPOUND, CITY OF SAN FERNANDO, (P)	<b>IMPROVEMENT OF TWO (2) STOREY          MULTI-PURPOSE BUILDING</b>	IRVIN JOSEF CRUZ ADMINISTRATIVE AIDE VI	MEYHARD Y. LAXA ENGINEERING ASSISTANT	ESMERALDO T. GULAPA ENGINEER IV	WILFREDO A. MANALI ASSISTANT PROVINCIAL ENGINEER	OLIMPIO M. PANGAN PROVINCIAL ENGINEER	HON. DENNIS G. PINEDA GOVERNOR BY THE AUTHORITY OF THE GOVERNOR: ATTY. CHARLIE G. CHUA PROVINCIAL ADMINISTRATOR	A - 6 06 / 14



**ROOF PLAN**

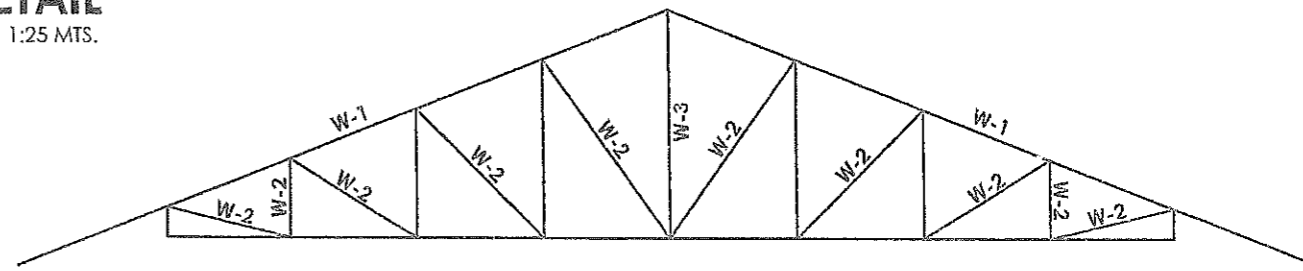
SCALE: 1:100 MTS.

	FROM THE OFFICE OF:	PROJECT TITLE:	CAD BY:	PREPARED BY:	CHECKED BY:	VERIFIED & SUBMITTED BY:	RECOMMENDING APPROVAL:	APPROVED BY:	SHEET NO.:
	REPUBLIC OF THE PHILIPPINES PROVINCE OF PAMPANGA <b>PROVINCIAL ENGINEER'S OFFICE</b> CAPITOL COMPOUND, CITY OF SAN FERNANDO, (P)	<b>IMPROVEMENT OF TWO (2) STOREY          MULTI-PURPOSE BUILDING</b> LOCATION: SANTA LUCIA, SASMUAN, PAMPANGA	 <b>IRVIN JOSEF CRUZ</b> ADMINISTRATIVE AIDE VI	 <b>WYNARD Y. LAXA</b> ENGINEERING ASSISTANT	 <b>ESMERALDO T. GULAF</b> ENGINEER IV	 <b>WILFREDO A. MANALILI</b> ASSISTANT PROVINCIAL ENGINEER	 <b>OLIMPIO M. PANGAN</b> PROVINCIAL ENGINEER	 <b>HON. DENNIS G. PINEDA</b> GOVERNOR BY THE AUTHORITY OF THE GOVERNOR:  <b>ATTY. CHARLIE G. CHUA</b> PROVINCIAL ADMINISTRATOR	<b>S - 1</b> 07 / 14

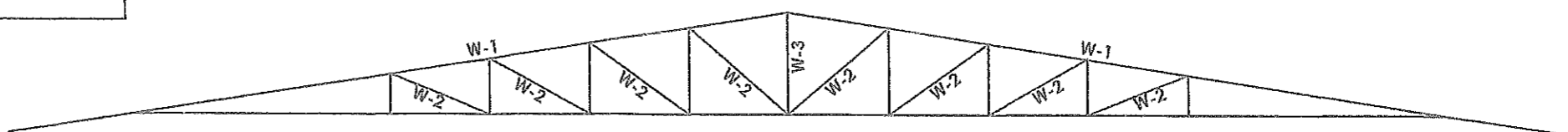


**EXISTING TYPICAL TRUSS DETAIL**  
SCALE: 1:25 MTS.

SCHEDULE OF TRUSS			
MARK	DESCRIPTION	QTY.	SIZES
W-1	TOP & BOTTOM CHORD	2L	2"x 2"x 6 mm
W-2	HOR. & VERT. MEMBERS	2L	1½" x 1½" x 6 mm
W-3	KING POST MEMBERS	2L	2"x 2"x 6 mm



**TRUSS - 1 DIAGRAM**  
SCALE: 1:50 MTS.

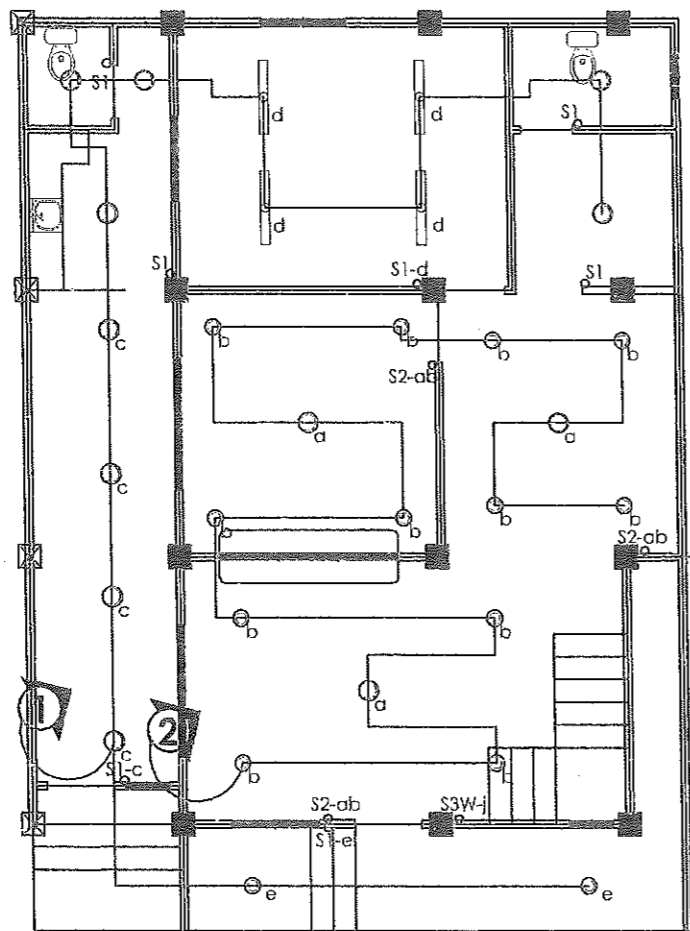


**TRUSS - 2 DIAGRAM**  
SCALE: 1:50 MTS.

NOTE: REPLACEMENT OF  
DAMAGE C-PURLINS  
FASCIA BOARD (1.5 X 2"X6")  
  
REPLACEMENT OF  
DAMAGED C-PURLINS (2 X 3 X 1.5mm)

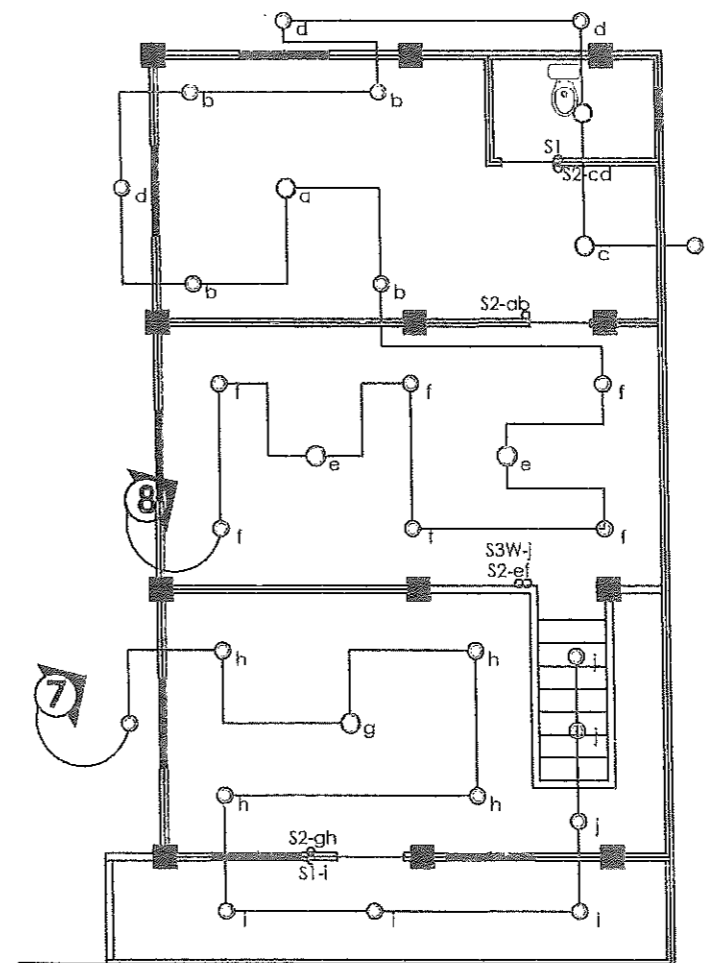
	FROM THE OFFICE OF:	PROJECT TITLE:	CAD BY:	PREPARED BY:	CHECKED BY:	VERIFIED & SUBMITTED BY:	RECOMMENDING APPROVAL:	APPROVED BY:	SHEET NO.:
	REPUBLIC OF THE PHILIPPINES PROVINCE OF PAMPANGA <b>PROVINCIAL ENGINEER'S OFFICE</b> CAPITOL COMPOUND, CITY OF SAN FERNANDO, (P)	<b>IMPROVEMENT OF TWO (2) STOREY          MULTI-PURPOSE BUILDING</b> LOCATION: SANTA LUCIA, SASMUAN, PAMPANGA	IRVIN JOSEF CRUZ ADMINISTRATIVE AIDE VI	NEYWARD Y. LARA ENGINEERING ASSISTANT	ESMERALDO T. GULAPA ENGINEER IV	WILBERTO A. MANALILI ASSISTANT PROVINCIAL ENGINEER	OLIMPIO M. PANGAN PROVINCIAL ENGINEER	HON. DENNIS G. PINEDA GOVERNOR BY THE AUTHORITY OF THE GOVERNOR: ATTY. CHARLIE G. CHUA PROVINCIAL ADMINISTRATOR	S - 2 08 / 14





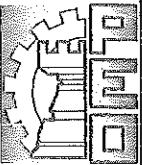
**GROUND FLOOR LIGHTING LAY-OUT**

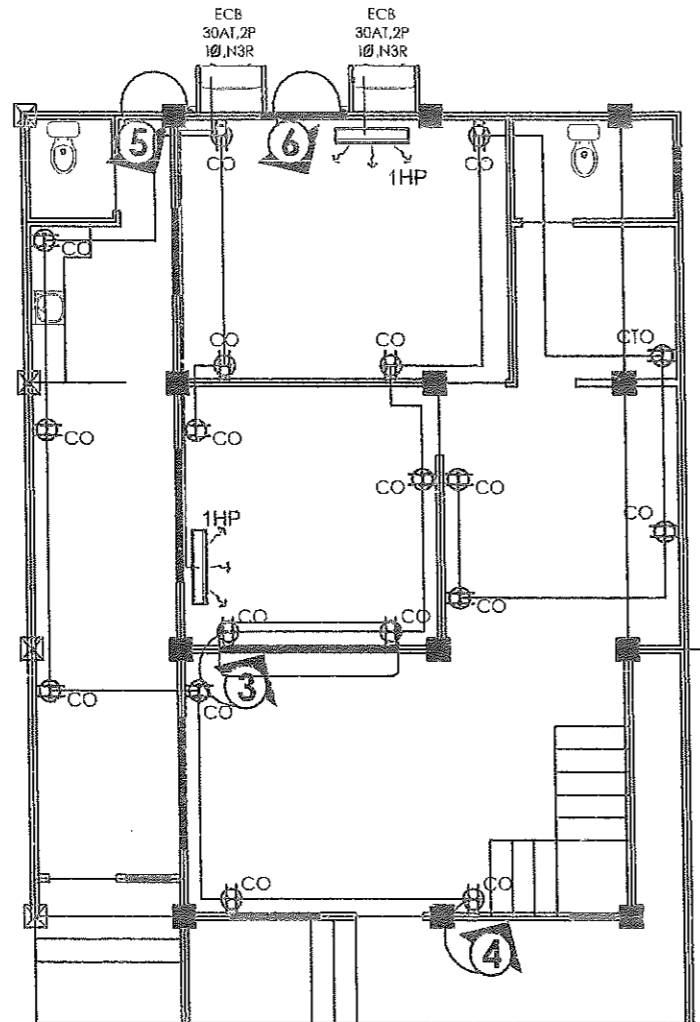
SCALE: 1:100 MTS.



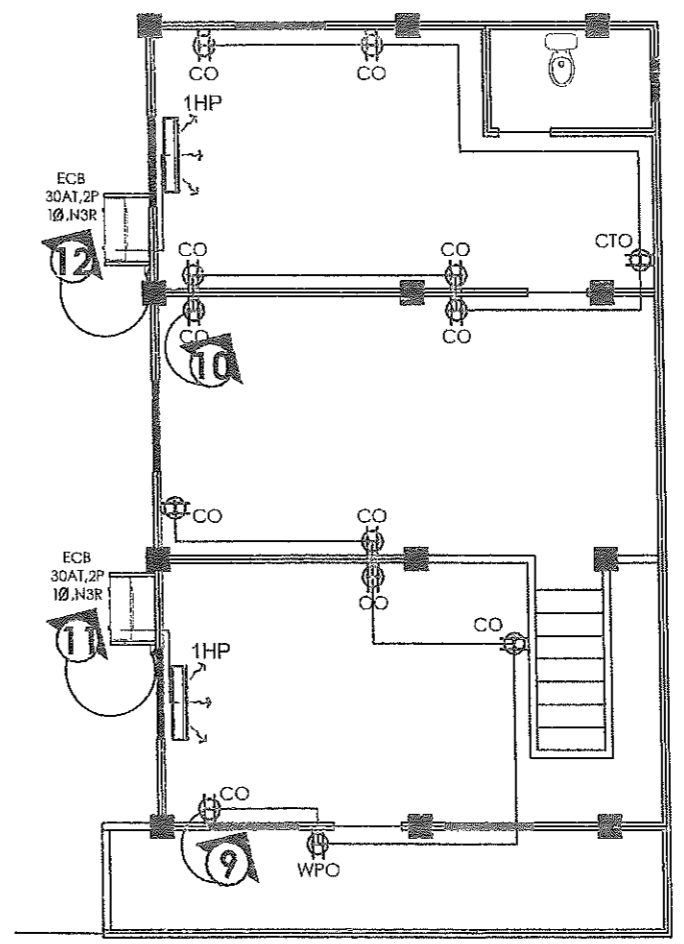
**SECOND FLOOR LIGHTING LAY-OUT**

SCALE: 1:100 MTS.

	FROM THE OFFICE OF:	PROJECT TITLE:	CAD BY:	PREPARED BY:	CHECKED BY:	VERIFIED & SUBMITTED BY:	RECOMMENDING APPROVAL:	APPROVED BY:	SHEET NO.:
	REPUBLIC OF THE PHILIPPINES PROVINCE OF PAMPANGA <b>PROVINCIAL ENGINEER'S OFFICE</b> CAPITOL COMPOUND, CITY OF SAN FERNANDO, (P)	<b>IMPROVEMENT OF TWO (2) STOREY          MULTI-PURPOSE BUILDING</b> LOCATION: SANTA LUCIA, SASMUAN, PAMPANGA	<i>[Signature]</i> <b>IRVIN JOSEF CRUZ</b> ADMINISTRATIVE AIDE VI	<i>[Signature]</i> <b>MICHAEL T. MONTEMAYOR</b> ENGINEER III	<i>[Signature]</i> <b>ESMERALDO T. GUIAPA</b> ENGINEER IV	<i>[Signature]</i> <b>WILFREDO A. MANALILI</b> ASSISTANT PROVINCIAL ENGINEER	<i>[Signature]</i> <b>OLIMPIO M. PANGAN</b> PROVINCIAL ENGINEER	<b>HON. DENNIS G. PINEDA</b> GOVERNOR BY THE AUTHORITY OF THE GOVERNOR: <i>[Signature]</i> <b>ATTY. CHARME G. CHUA</b> PROVINCIAL ADMINISTRATOR	<b>E - 1</b> 09 / 14



**GROUND FLOOR POWER LINE LAY-OUT**  
SCALE: 1:100 MTS.



**SECOND FLOOR POWER LINE LAY-OUT**  
SCALE: 1:100 MTS.

	FROM THE OFFICE OF:	PROJECT TITLE:	CAD BY:	PREPARED BY:	CHECKED BY:	VERIFIED & SUBMITTED BY:	RECOMMENDING APPROVAL:	APPROVED BY:	SHEET NO.:
	REPUBLIC OF THE PHILIPPINES PROVINCE OF PAMPANGA <b>PROVINCIAL ENGINEER'S OFFICE</b>	<b>IMPROVEMENT OF TWO (2) STOREY          MULTI-PURPOSE BUILDING</b>						<b>HON. DENNIS G. PINEDA</b> GOVERNOR BY THE AUTHORITY OF THE GOVERNOR:	<b>E - 2</b>
	CAPITOL COMPOUND, CITY OF SAN FERNANDO, (P)	LOCATION: SANTA LUCIA, SASMUAN, PAMPANGA	<b>IRVIN JOSEF CRUZ</b> ADMINISTRATIVE AIDE VI	<b>MICHAEL T. MONTEMAYOR</b> ENGINEER III	<b>ESMERALDO T. GULAPA</b> ENGINEER IV	<b>WILFREDO A. MANALILI</b> ASSISTANT PROVINCIAL ENGINEER	<b>OLIMPIO M. PANGAN</b> PROVINCIAL ENGINEER	<b>ATTY. CHARLIE C. CHUA</b> PROVINCIAL ADMINISTRATOR	<b>10 / 14</b>

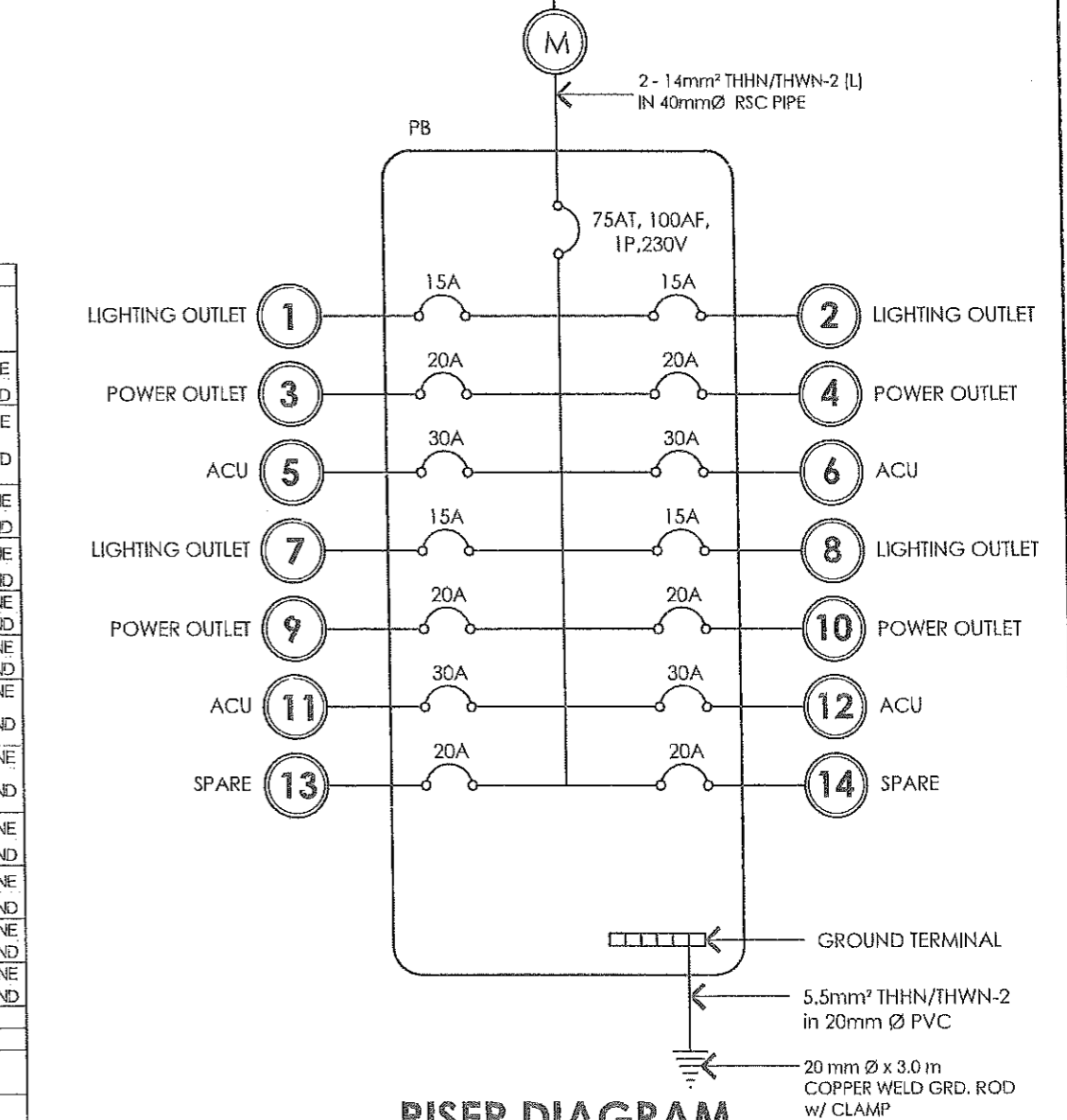
**GENERAL NOTES:**

- ALL ELECTRICAL WORKS SHALL COMPLY IN ACCORDANCE WITH THESE PLANS AND SPECIFICATIONS. THE APPLICABLE PROVISIONS OF THE LATEST EDITION OF THE PHILIPPINE ELECTRICAL CODE (PEC), THE RULES AND REGULATIONS OF THE LOCAL ENFORCING AUTHORITY AND THE REQUIREMENTS OF THE LOCAL POWER COMPANY. THE ELECTRICAL WORKS SHALL BE UNDER IMMEDIATE SUPERVISION OF A DULY REGISTERED ELECTRICAL ENGINEER.
- THE ELECTRICAL SERVICE POWER IS 1-PHASE, 2-WIRE, 230V AC, 60Hz.
- WIRING METHOD SHALL BE AS FOLLOWS;
  - FEEDERS AND RISERS - INTERMEDIATE METALLIC CONDUIT
  - LIGHTING POWER RECEPTACLE - POLYVINYL CHLORIDE CONDUIT BRANCH CKT. & AUXILIARY, SCH. 40.
- ALL WIRES SHALL BE COPPER AND THERMOPLASTIC INSULATED TYPE "THW" UNLESS OTHERWISE INDICATED IN THE PLAN. THE MINIMUM SIZE OF WIRE FOR POWER AND LIGHTING CIRCUIT HOMERUN SHALL BE 3.5mm<sup>2</sup> AND INSULATED FOR 600 VOLTS. SMALLEST RACEWAY SHALL BE 15mmØ TRADE/NORMAL SIZE.
- ALL OUTLET BOXES SHALL BE GALVANIZED GAGE NO. 16 DEEP TYPE WITH FACTORY KNOCKOUTS.
- ALL MATERIALS TO BE USED SHALL BE BRAND NEW AND APPROVED TYPE FOR THE PARTICULAR LOCATION AND PURPOSE OF USAGE.
- GROUNDING SYSTEM SHALL BE PROVIDED TO ALL LIGHTING AND POWER CIRCUIT AS PER PHILIPPINE ELECTRICAL CODE REQUIREMENT.
- MOUNTING HEIGHT OF WIRING DEVICES SHALL BE AS FOLLOWS;
  - LIGHTING SWITCH - 1.20 m ABOVE FINISHED FLOOR
  - CONVENIENCE OUTLET - 0.30 m ABOVE FINISHED FLOOR
  - WALL FAN OUTLET - 1.80 m ABOVE FINISHED FLOOR
  - PANEL BOARD - 1.50 m ABOVE FINISHED FLOOR

**LEGEND & SYMBOLS:**

- 40WATTS, 230V FLUORESCENT LIGHTING FIXTURES
- 4" VERTICAL DOWNLIGHT, RECESSED TYPE, w/ 18W 2U, E27 CFL
- MAIN PANEL BOARD
- ARIAL SERVICE ENTRANCE
- HOME RUN
- ONE GANG SWITCH
- TWO GANG SWITCH
- THREE GANG SWITCH
- THREE WAY SWITCH
- KILOWATT METER
- DUPLEX CONVENIENCE OUTLET
- SINGLE WALLFAN OUTLET

SINGLE PHASE SOURCE 230V  
AERIAL SERVICE ENTRANCE



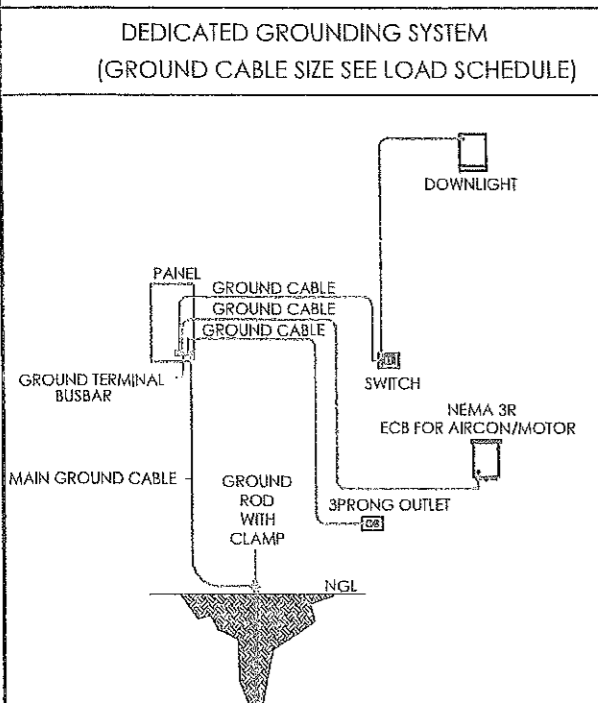
**RISER DIAGRAM**  
SCALE: NTS.

Panel Name: IMPROVEMENT OF MULTI-PURPOSE BUILDING - SASMUAN		LOAD CALCULATION		OVER-CURRENT PROTECTION			SIZE OF WIRE AND CONDUIT	
CKT No.	DESCRIPTION	V	VA	AT	AF	P		
1	9 - 12W LED DOWNLIGHT RECESSED 4 - 1X18 LED T8 LINEAR LIGHT	220V	180	0.82	15	50	2	2 - 3.5mm <sup>2</sup> THN/THWN - 2 LINE 1 - 2.0mm <sup>2</sup> THN/THWN - GRND
2	12 - 12W LED DOWNLIGHT RECESSED 3 - 15W LED DOWNLIGHT CW E27 LIGHT BULB/TUBE, SURFACE MOUNTED	220V	189	0.86	15	50	2	2 - 3.5mm <sup>2</sup> THN/THWN - 2 LINE 1 - 2.0mm <sup>2</sup> THN/THWN - GRND
3	9 - CONVENIENCE OUTLET @ 180W	220V	1620	7.36	20	50	2	2 - 3.5mm <sup>2</sup> THN/THWN - 2 LINE 1 - 2.0mm <sup>2</sup> THN/THWN - GRND
4	9 - CONVENIENCE OUTLET @ 180W	220V	1620	7.36	20	50	2	2 - 3.5mm <sup>2</sup> THN/THWN - 2 LINE 1 - 2.0mm <sup>2</sup> THN/THWN - GRND
5	1 HP SPLIT-TYPE ACU UNIT	220V	1840	8.36	30	50	2	2 - 5.5mm <sup>2</sup> THN/THWN - 2 LINE 1 - 2.0mm <sup>2</sup> THN/THWN - GRND
6	1 HP SPLIT-TYPE ACU UNIT	220V	1840	8.36	30	50	2	2 - 5.5mm <sup>2</sup> THN/THWN - 2 LINE 1 - 2.0mm <sup>2</sup> THN/THWN - GRND
7	11 - 12W LED DOWNLIGHT RECESSED 3 - 15W LED DOWNLIGHT CW E27 LIGHT BULB/TUBE, SURFACE MOUNTED	220V	147	0.67	15	50	2	1 - 2.0mm <sup>2</sup> THN/THWN - GRND 2 - 3.5mm <sup>2</sup> THN/THWN - 2 LINE
8	16 - 12W LED DOWNLIGHT RECESSED 3 - 15W LED DOWNLIGHT CW E27 LIGHT BULB/TUBE, SURFACE MOUNTED	220V	237	1.08	15	50	2	1 - 2.0mm <sup>2</sup> THN/THWN - GRND 2 - 3.5mm <sup>2</sup> THN/THWN - 2 LINE
9	6 - CONVENIENCE OUTLET @ 180W	220V	1080	4.91	20	50	2	2 - 3.5mm <sup>2</sup> THN/THWN - 2 LINE 1 - 2.0mm <sup>2</sup> THN/THWN - GRND
10	7 - CONVENIENCE OUTLET @ 180W	220V	1260	5.73	20	50	2	2 - 3.5mm <sup>2</sup> THN/THWN - 2 LINE 1 - 2.0mm <sup>2</sup> THN/THWN - GRND
11	1 HP SPLIT-TYPE ACU UNIT	220V	1840	8.36	30	50	2	2 - 5.5mm <sup>2</sup> THN/THWN - 2 LINE 1 - 2.0mm <sup>2</sup> THN/THWN - GRND
12	1 HP SPLIT-TYPE ACU UNIT	220V	1840	8.36	30	50	2	2 - 5.5mm <sup>2</sup> THN/THWN - 2 LINE 1 - 2.0mm <sup>2</sup> THN/THWN - GRND
13	SPARE	220V	1000	4.54	20	50	2	
14	SPARE	220V	1000	4.54	20	50	2	
TOTAL CONNECTED LOAD			15,693	71.31				

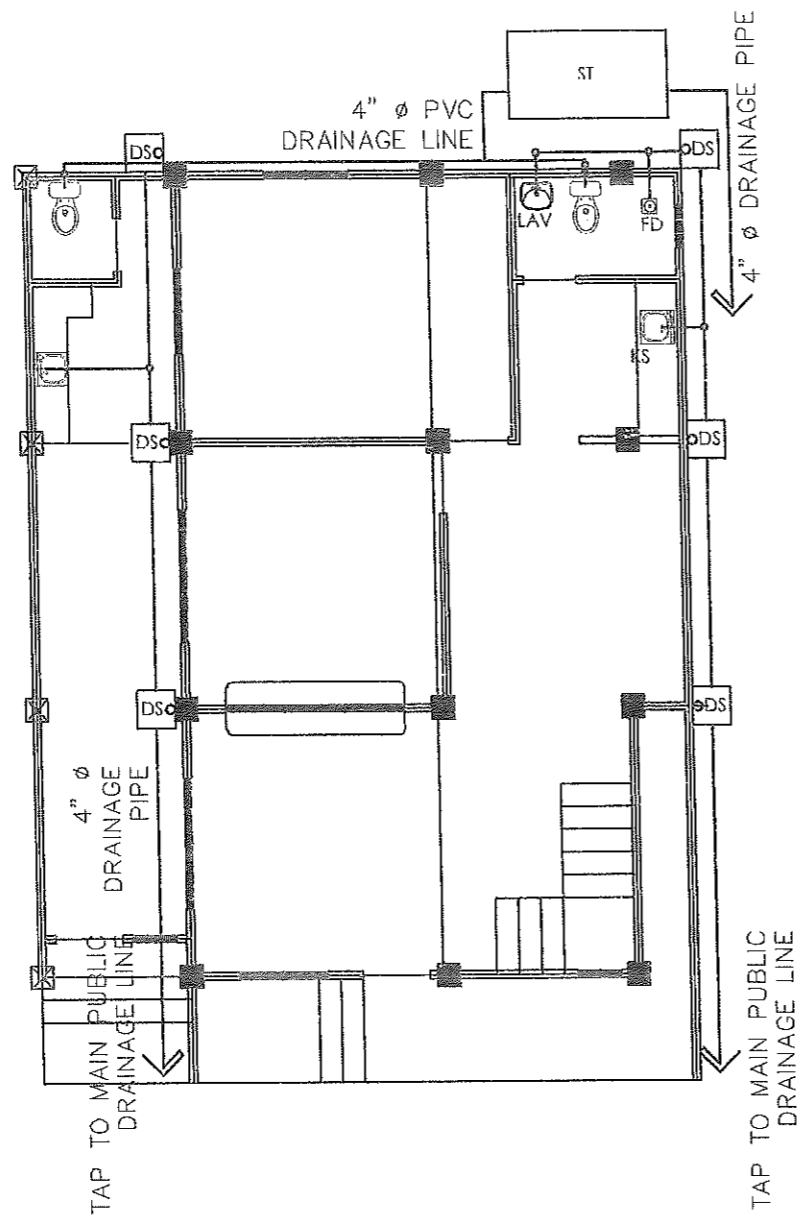
**FEEDER LINE COMPUTATION:**  
I = (71.31 + (8.36 x 0.25)) 85% DF  
I = 62.39 Amps

**MAIN CIRCUIT BREAKER COMPUTATION:**  
I = (71.31 + (8.36 x 1.5)) 85% DF  
I = 71.27 Amps

**USE:**  
75A1/100AF MCCB, 2P, 230V WITH BRANCHES, BOLT-ON  
2 - 14mm<sup>2</sup> THN/THWN - 2(L) + 1 - 5.5mm<sup>2</sup> THN/THWN - 2(G) in 40mm Ø RSC PIPE

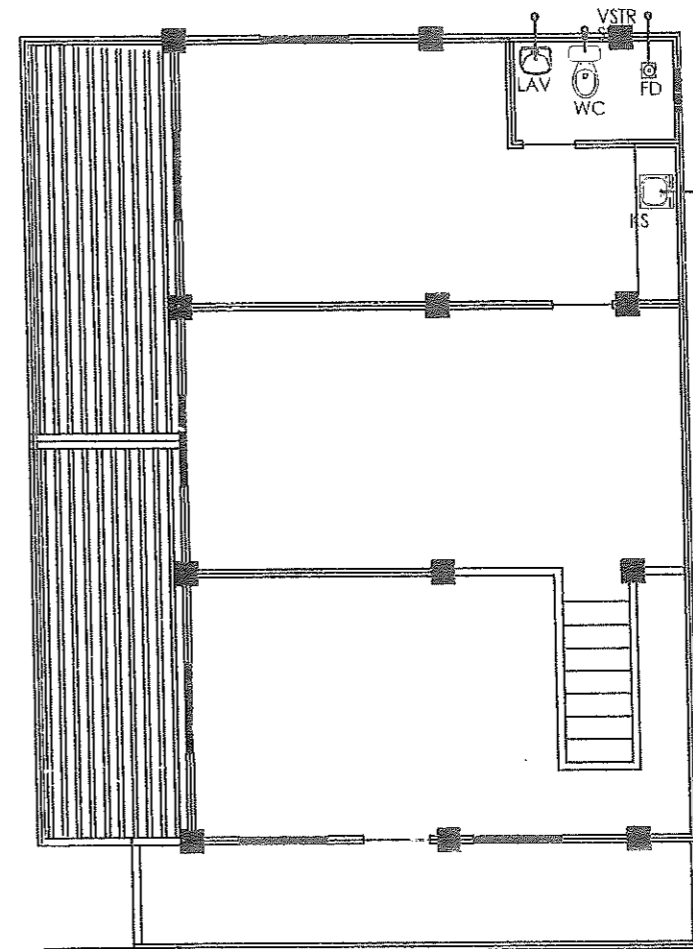


<p>FROM THE OFFICE OF: REPUBLIC OF THE PHILIPPINES PROVINCE OF PAMPANGA <b>PROVINCIAL ENGINEER'S OFFICE</b> CAPITOL COMPOUND, CITY OF SAN FERNANDO, (P)</p>	PROJECT TITLE: <b>IMPROVEMENT OF TWO (2) STOREY MULTI-PURPOSE BUILDING</b>	CAD BY: <i>Irvin Josef Cruz</i> <b>IRVIN JOSEF CRUZ</b> ADMINISTRATIVE AIDE VI	PREPARED BY: <i>Michael J. Montemayor</i> <b>MICHAEL J. MONTEMAYOR</b> ENGINEER III	CHECKED BY: <i>Esmeraldo T. Gulapa</i> <b>ESMERALDO T. GULAPA</b> ENGINEER IV	VERIFIED & SUBMITTED BY: <i>Wilfredo A. Manalili</i> <b>WILFREDO A. MANALILI</b> ASSISTANT PROVINCIAL ENGINEER	RECOMMENDING APPROVAL: <i>Olimpio M. Pangan</i> <b>OLIMPIO M. PANGAN</b> PROVINCIAL ENGINEER	APPROVED BY: <i>Hon. Dennis G. Pineda</i> <b>HON. DENNIS G. PINEDA</b> GOVERNOR BY THE AUTHORITY OF THE GOVERNOR: <i>Atty. Charlie G. Chua</i> <b>ATTY. CHARLIE G. CHUA</b> PROVINCIAL ADMINISTRATOR	SHEET NO.: <b>E - 3</b> 11 / 14
	LOCATION: SANTA LUCIA, SASMUAN, PAMPANGA							



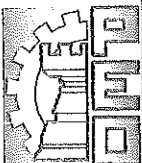
**GROUND FLOOR SEWER LINE LAY-OUT**

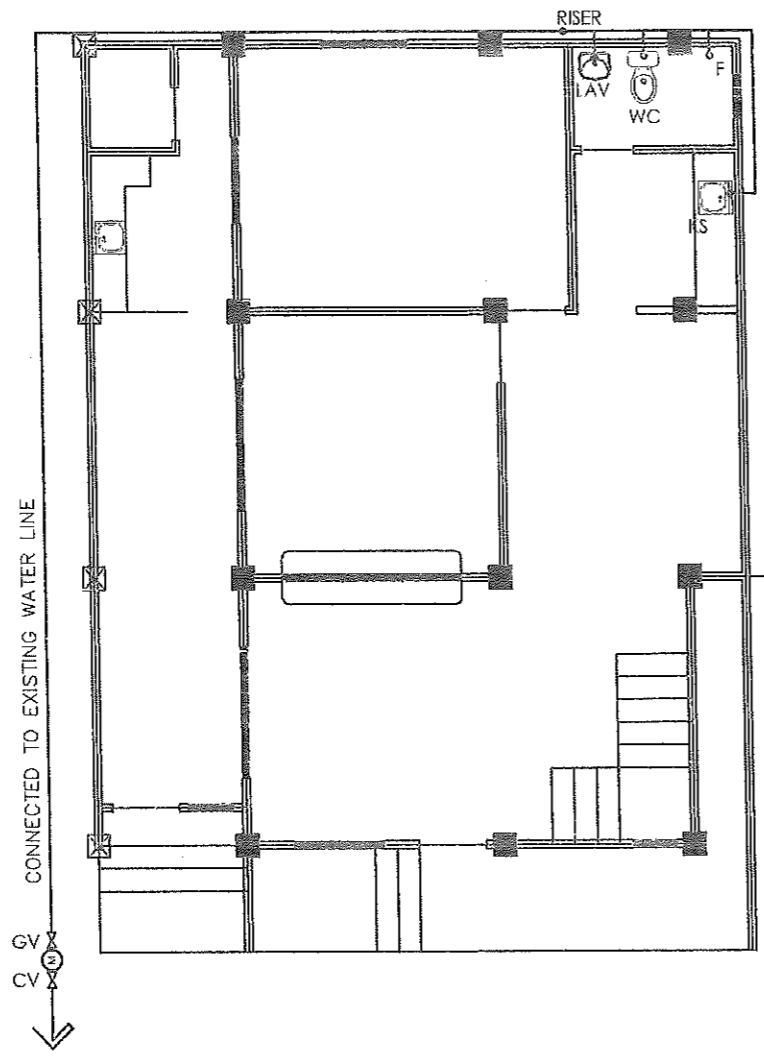
SCALE: 1:100 MTS.



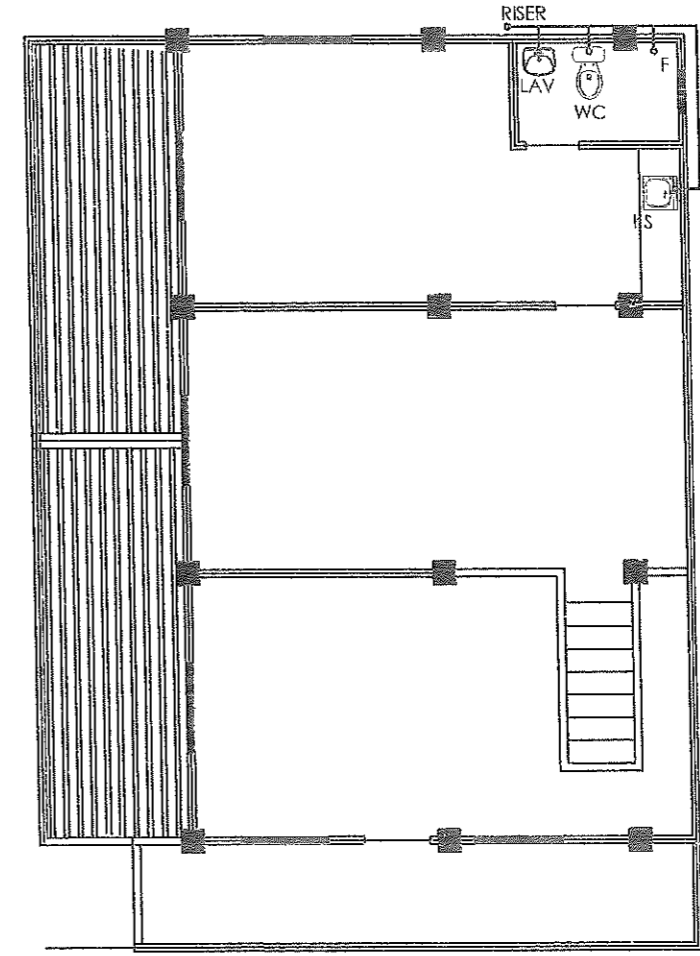
**SECOND FLOOR SEWER LINE LAY-OUT**

SCALE: 1:100 MTS.

	FROM THE OFFICE OF:	PROJECT TITLE:	CAD BY:	PREPARED BY:	CHECKED BY:	VERIFIED & SUBMITTED BY:	RECOMMENDING APPROVAL:	APPROVED BY:	SHEET NO.:
	REPUBLIC OF THE PHILIPPINES PROVINCE OF PAMPANGA <b>PROVINCIAL ENGINEER'S OFFICE</b> CAPITOL COMPOUND, CITY OF SAN FERNANDO, (P)	<b>IMPROVEMENT OF TWO (2) STOREY          MULTI-PURPOSE BUILDING</b>	IRVIN JOSEF CRUZ ADMINISTRATIVE AIDE VI	MEYNARD Y. LAXA ENGINEERING ASSISTANT	ESMERALDO T. GULAPA ENGINEER IV	WILFREDO A. MANALI ASSISTANT PROVINCIAL ENGINEER	OLIMPIO M. PANGAN PROVINCIAL ENGINEER	HON. DENNIS G. PINEDA GOVERNOR BY THE AUTHORITY OF THE GOVERNOR: ATTY. CHARLIE G. CHUA PROVINCIAL ADMINISTRATOR	P - 1 12 / 14



**GROUND FLOOR WATER LINE LAY-OUT**  
SCALE: 1:100 MTS.

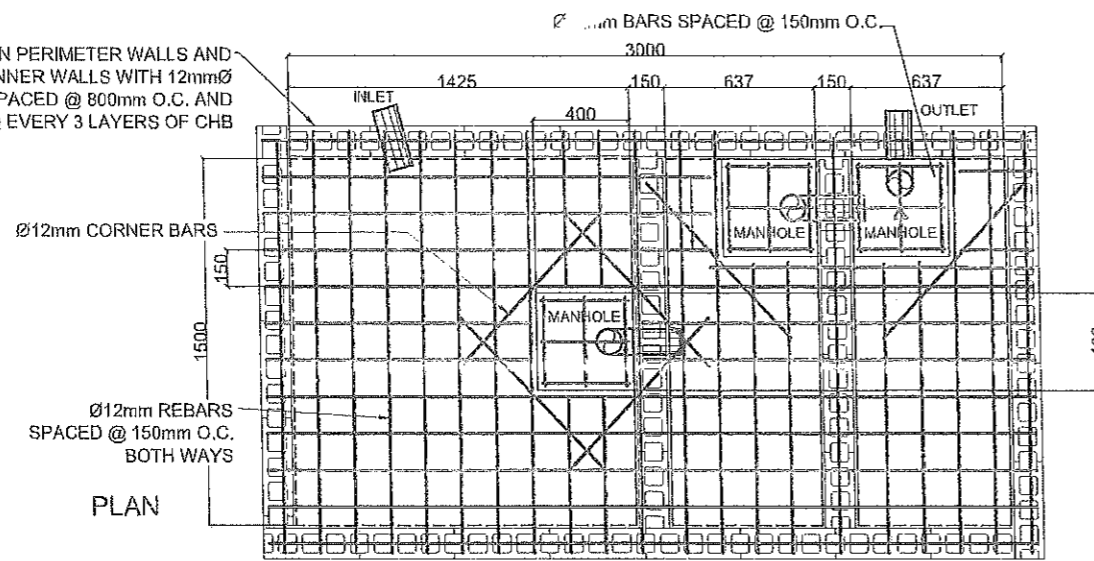


**SECOND FLOOR WATER LINE LAY-OUT**  
SCALE: 1:100 MTS.

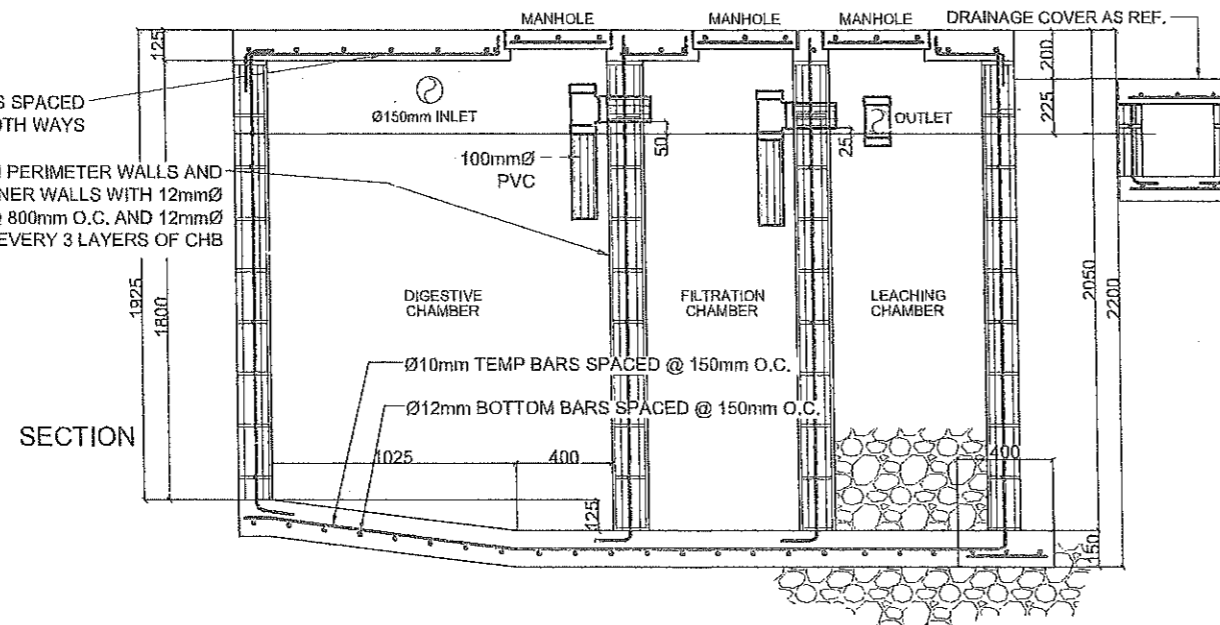
	FROM THE OFFICE OF:	PROJECT TITLE:	CAD BY:	PREPARED BY:	CHECKED BY:	VERIFIED & SUBMITTED BY:	RECOMMENDING APPROVAL:	APPROVED BY:	SHEET NO.:	
	REPUBLIC OF THE PHILIPPINES PROVINCE OF PAMPANGA <b>PROVINCIAL ENGINEER'S OFFICE</b> CAPITOL COMPOUND, CITY OF SAN FERNANDO, (P)	<b>IMPROVEMENT OF TWO (2) STOREY          MULTI-PURPOSE BUILDING</b>						<b>HON. DENNIS G. PINEDA</b> GOVERNOR BY THE AUTHORITY OF THE GOVERNOR:		<b>P - 2</b>
	LOCATION: SANTA LUCIA, SASMUAN, PAMPANGA	<b>IRVIN JOSEF CRUZ</b> ADMINISTRATIVE AIDE VI	<b>MENARD Y. LAXA</b> ENGINEERING ASSISTANT	<b>ESMERALDO T. GULAPA</b> ENGINEER IV	<b>WILFREDO A. MANALILI</b> ASSISTANT PROVINCIAL ENGINEER	<b>OLIMPIO M. PANGAN</b> PROVINCIAL ENGINEER	<b>ATTY. CHARIF G. CHUA</b> PROVINCIAL ADMINISTRATOR	13 / 14		



125mm THK CHB ON PERIMETER WALLS AND 100mm THK CHB ON INNER WALLS WITH 12mmØ VERT. BARS SPACED @ 800mm O.C. AND 12mmØ HOR. BARS @ EVERY 3 LAYERS OF CHB

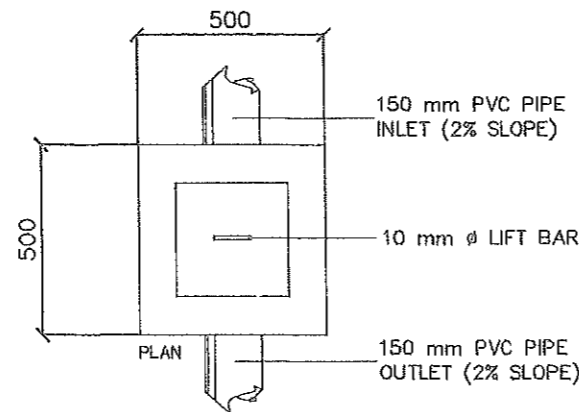
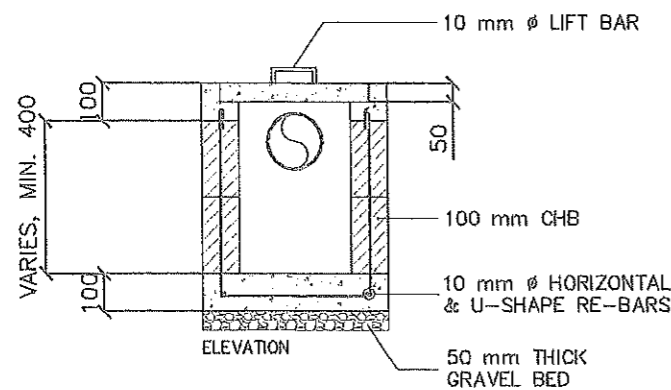


Ø12mm REBARS SPACED @ 150mm O.C. BOTH WAYS  
125mm THK CHB ON PERIMETER WALLS AND 100mm THK CHB ON INNER WALLS WITH 12mmØ VERT. BARS SPACED @ 800mm O.C. AND 12mmØ HOR. BARS @ EVERY 3 LAYERS OF CHB



### SEPTIC VAULT DETAIL

SCALE: NTS.



### CATCH BASIN DETAIL

SCALE: NTS.

### GENERAL NOTES:

- ALL PLUMBING WORKS INCLUDED HEREIN SHALL BE EXECUTED IN ACCORDANCE TO THE PROVISIONS OF THE PHILIPPINE PLUMBING CODE, NATIONAL BUILDING CODE & ALL APPLICABLE RULES AND REGULATIONS
- COORDINATE THE DRAWING PLANS, SPECIFICATIONS & OTHER RELATED MATERIALS TO THE SUPERVISING ENGINEER/ARCHITECT FOR ANY DISCREPANCIES FOUND PRIOR TO THE EXECUTION OF WORK.
- ALL PIPES, FIXTURES AND OTHER UTILITIES SHALL CONFORM TO THE ACTUAL LOCATION, DEPTH, INVERT ELEVATIONS. ANY CHANGES TO BE MADE SHALL BE COORDINATED WITH THE SUPERVISING ENGINEER/ARCHITECT FOR THE NECESSARY ADJUSTMENT TO ENSURE PROPER EXECUTION OF WORK
- SEWER/DRAIN/WASTE PIPING REQUIREMENT :
 

MAIN DRAINAGE	-	100 mm Ø PVC PIPE
DOWNSPOUTS	-	75 mm Ø PVC PIPE
MAIN SOIL STACK	-	100 mm Ø PVC PIPE
SOIL BRANCH	-	100 mm Ø PVC PIPE
BRANCH VENT	-	75 mm Ø PVC PIPE
P-TRAP, FD & UR	-	50 mm Ø P-TRAP
WASTE PIPE, WC	-	100 mm Ø PVC PIPE
WASTE PIPE, LAV, FD & KS	-	50 mm Ø PVC PIPE
- WATER LINE PIPING REQUIREMENT:
 

MAIN WATER LINE/RISER	-	32 mm Ø PPR PIPE
BRANCH WATER LINE	-	20 mm Ø PPR PIPE
- GRADES OF HORIZONTAL PIPINGS :  
RUN ALL HORIZONTAL PIPINGS IN PERFECT ALIGNMENT & AT A FORM GRADE NOT LESS THAN TWO PERCENT (2%)
- CHANGE DIRECTION :  
ALL CHANGE IN DIRECTION SHALL BE MADE BY APPROPRIATE USE OF FORTY FIVE DEGREES (45°) WYES, LONG SWEEP QUARTER BEND, SIXTH-EIGHT OR SIXTEENTH BEND. WHEN THE CHANGE OF FLOW IS FROM HORIZONTAL TO VERTICAL A SINGLE 1/8 BEND COMBINATION MAY BE USED ON VERTICAL STACKS AND SHORT QUARTER BENDS MAYBE USED ON WASTE LINE, TEE AND CROSSES MAYBE USED IN BENT PIPES
- PIPE CLEAN-OUTS :  
CLEAN-OUTS ARE REQUIRED UNDER THE FOLLOWING CONDITIONS :  
a) EVERY CHANGE OF HORIZONTAL DIRECTION EXCEEDING 22-1/2°  
b) 1.50 m INSIDE THE PROPERTY LINE BEFORE THE BUILDING DRAINAGE CONNECTION.  
c) EVERY 15.0 m IN HORIZONTAL RUN OF PIPES  
d) AT THE END OF HORIZONTAL PIPES
- THE DIGESTION CHAMBER OF SEPTIC VAULT MUST BE WATERPROOFED.
- NOT LESS THAN 0.30 m OF AIR SPACE MUST BE LEFT BETWEEN THE TOP OF THE SEWAGE AND THE UNDER PART OF THE VAULT ROOF SLAB.
- ALL PLUMBING WORKS SHALL BE UNDER THE DIRECT SUPERVISION OF A LICENSED MASTER PLUMBER AND LICENSE PLUMBING CONTRACTOR.

### LEGEND & SYMBOLS

SHO - SHOWER	WC - WATER CLOSET
FAU - FAUCET	FD - FLOOR DRAIN
URI - URINAL	SD - SINK DRAIN
DS - DOWNSPOUT	RD - ROOD DRAIN
CO - CLEAN-OUT	LAV - LAVATORY WITH PEDESTAL

	FROM THE OFFICE OF:	PROJECT TITLE:	CAD BY:	PREPARED BY:	CHECKED BY:	VERIFIED & SUBMITTED BY:	RECOMMENDING APPROVAL:	APPROVED BY:	SHEET NO.:
	REPUBLIC OF THE PHILIPPINES PROVINCE OF PAMPANGA <b>PROVINCIAL ENGINEER'S OFFICE</b> CAPITOL COMPOUND, CITY OF SAN FERNANDO, (P)	<b>IMPROVEMENT OF TWO (2) STOREY          MULTI-PURPOSE BUILDING</b>	IRVIN JOSEF CRUZ ADMINISTRATIVE AIDE VI	MEYNARD Y. LAXA ENGINEERING ASSISTANT	ESMERALDO T. GULAPA ENGINEER IV	WILFREDO A. MANALI ASSISTANT PROVINCIAL ENGINEER	OLIMPIO M. PANGAN PROVINCIAL ENGINEER	HON. DENNIS G. PINEDA GOVERNOR BY THE AUTHORITY OF THE GOVERNOR: ATTY. CHARLIE G. CHUA PROVINCIAL ADMINISTRATOR	<b>P - 3</b> 14 / 14