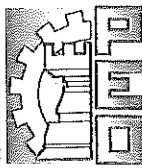
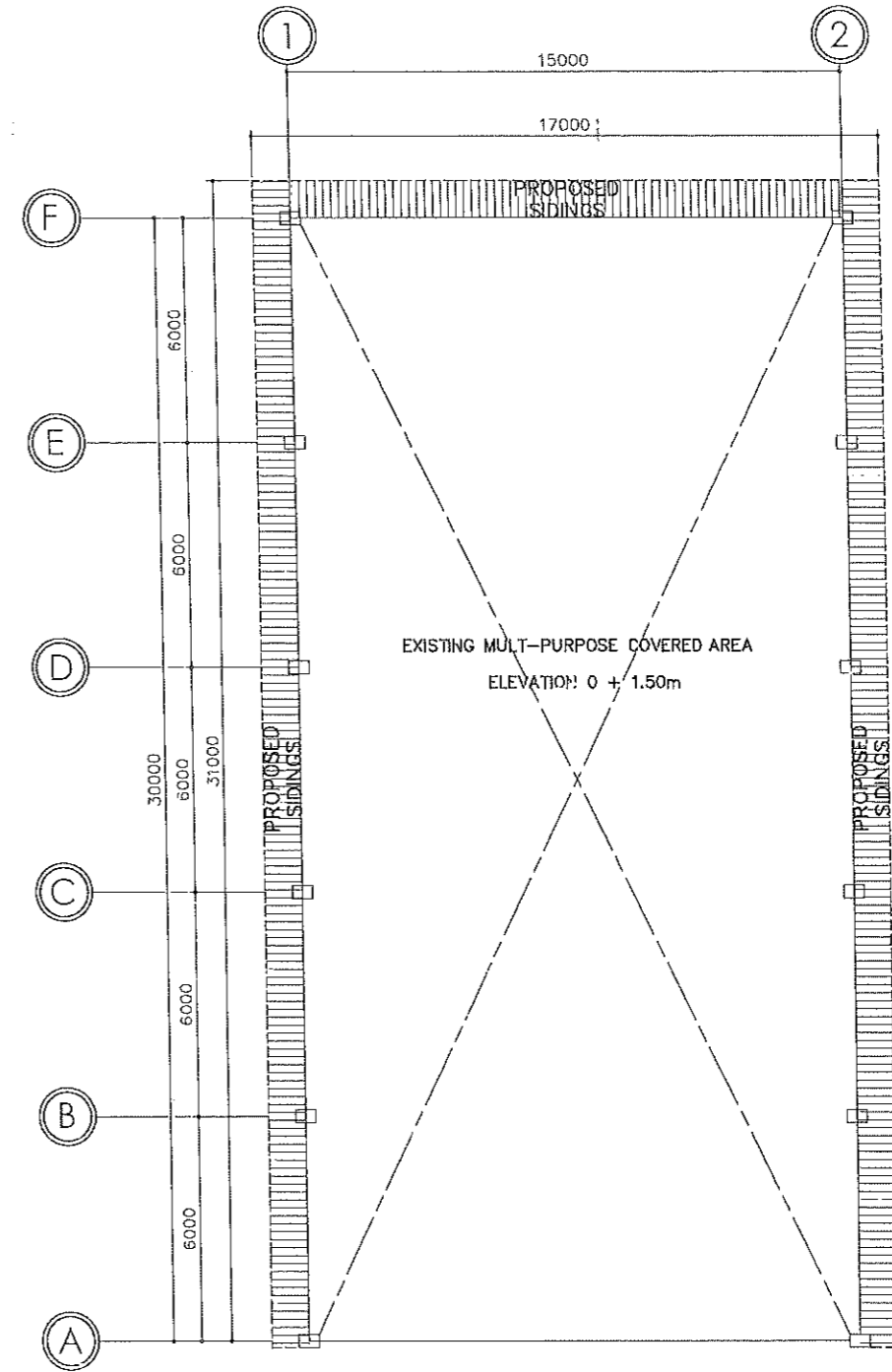
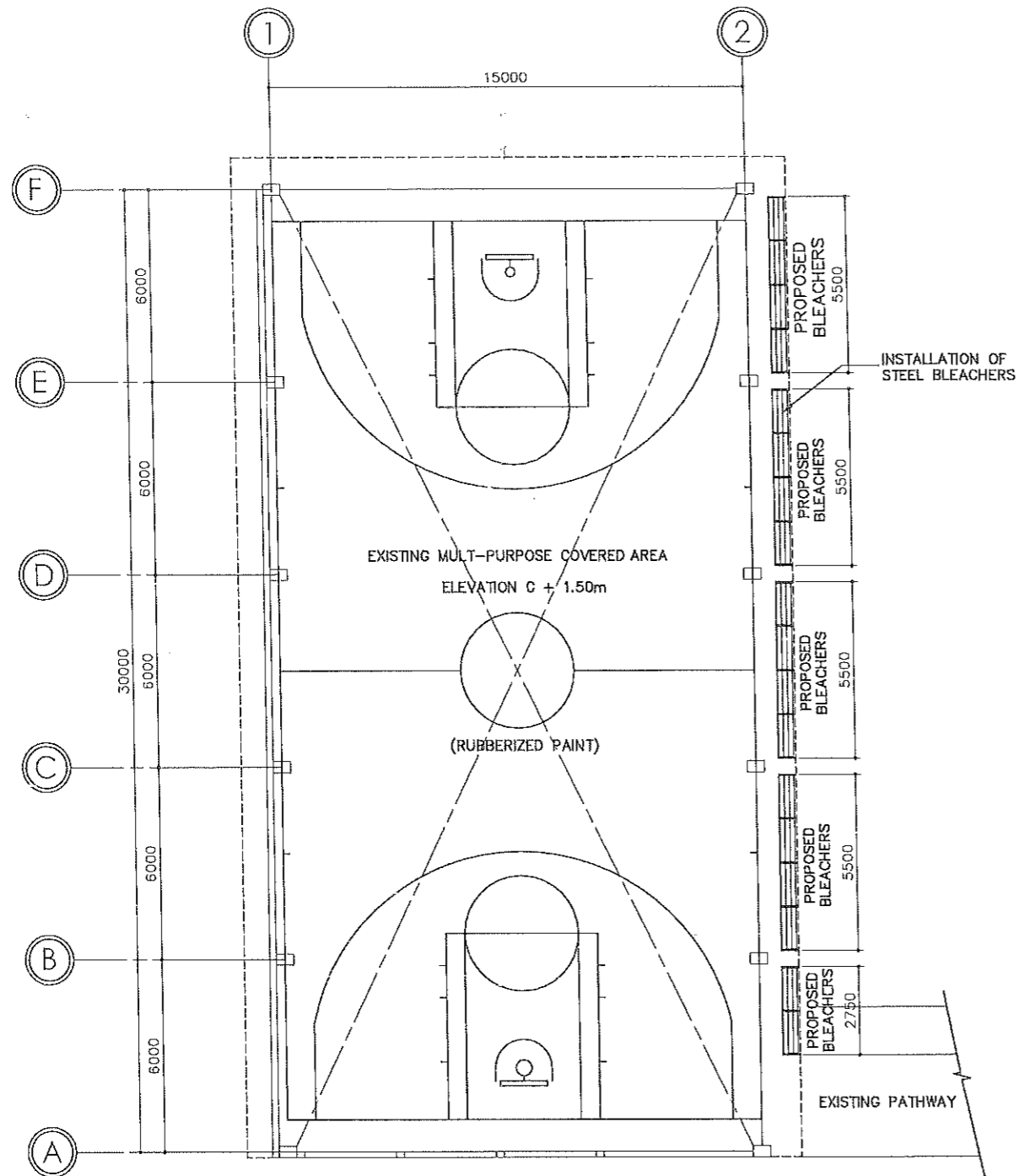




PERSPECTIVE

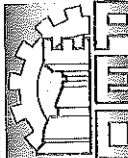
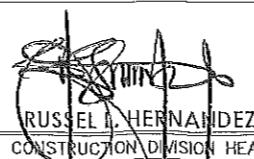
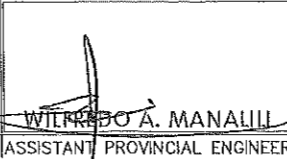
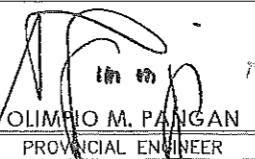
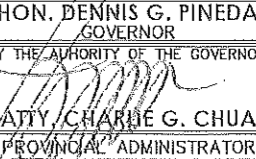
	FROM THE OFFICE OF:	PROJECT TITLE:	PREPARED BY:	CHECKED BY:	VERIFIED & SUBMITTED BY:	RECOMMENDING APPROVAL:	APPROVED BY:	SHEET CONTENTS:	SHEET NO.:
	REPUBLIC OF THE PHILIPPINES PROVINCE OF PAMPANGA <b>PROVINCIAL ENGINEER'S OFFICE</b> CAPITOL COMPOUND, CITY OF SAN FERNANDO, (P)	<b>IMPROVEMENT OF MULTI-PURPOSE          COVERED AREA</b> LOCATION: STA. CATALINA, LUBAO, PAMPANGA	REY JOHN G. SERRANO ENGINEER I JEANMARLYN B. BALUYOT ENGINEER II	RUSSEL HERNANDEZ CONSTRUCTION DIVISION HEAD	WILFREDO A. MANALI ASSISTANT PROVINCIAL ENGINEER	OLIMPIO M. PANGAN PROVINCIAL ENGINEER	HON. DENNIS G. PINEDA GOVERNOR BY THE AUTHORITY OF THE GOVERNOR: ATTY. CHARLIE G. CHUA PROVINCIAL ADMINISTRATOR	AS SHOWN	1 01 / 08

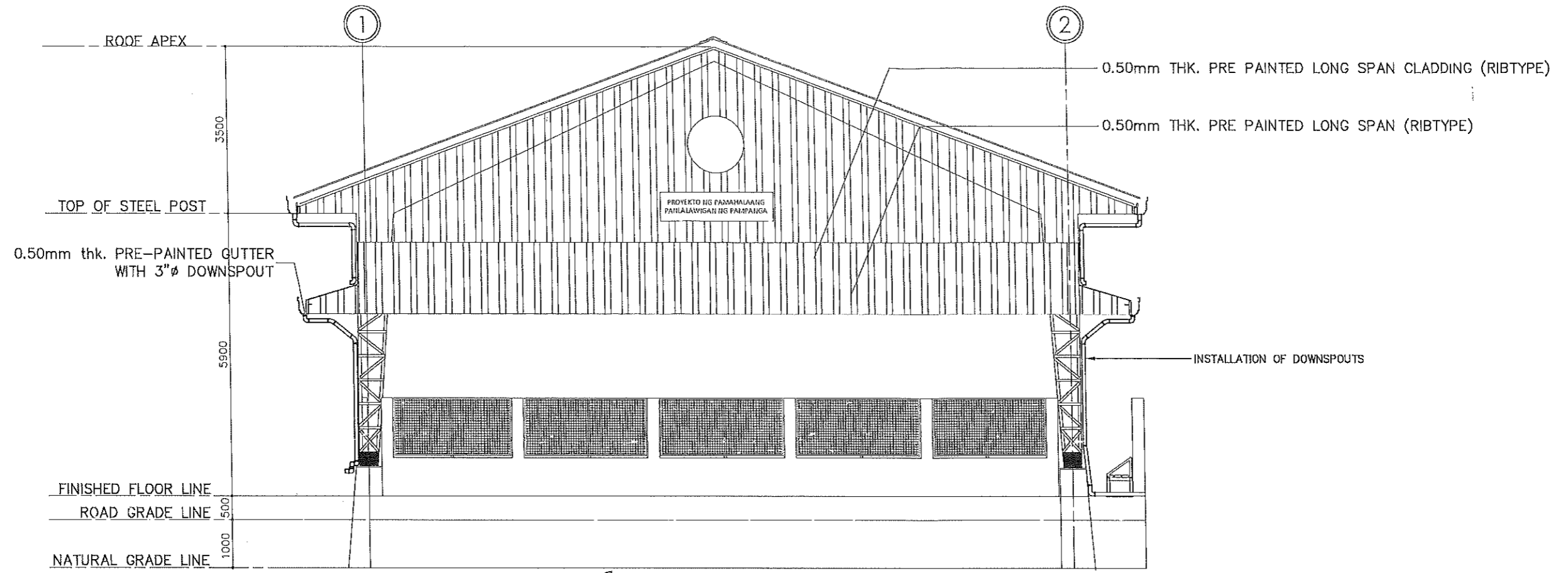


SCOPE OF WORK:

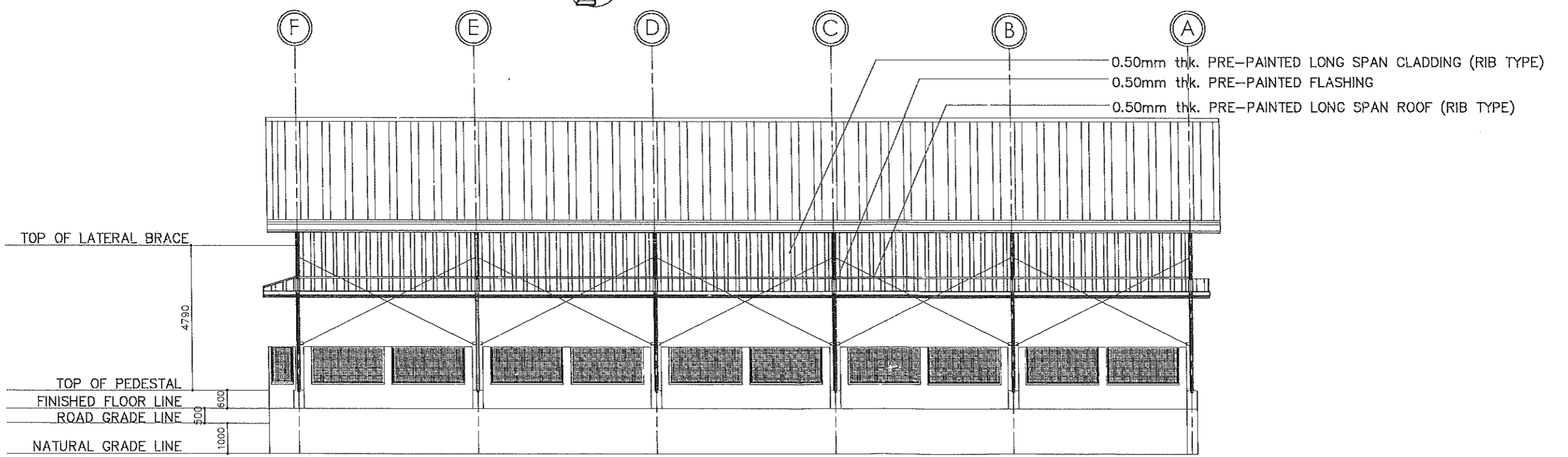
- INSTALLATION OF STEEL BLEACHERS
- INSTALLATION OF SIDINGS AND CLADDINGS
- INSTALLATION OF DOWNSPOUT
- RUBBERIZING COVERED AREA
- REPAINT OF EXISTING STRUCTURE

**FLOOR PLAN**  
SCALE: 1:200 MTS.

	FROM THE OFFICE OF:	PROJECT TITLE:	PREPARED BY:	CHECKED BY:	VERIFIED & SUBMITTED BY:	RECOMMENDING APPROVAL:	APPROVED BY:	SHEET CONTENTS:	SHEET NO.:
	REPUBLIC OF THE PHILIPPINES PROVINCE OF PAMPANGA <b>PROVINCIAL ENGINEER'S OFFICE</b> CAPITOL COMPOUND, CITY OF SAN FERNANDO, (P)	<b>IMPROVEMENT OF MULTI-PURPOSE COVERED AREA</b> LOCATION: STA. CATALINA, LUBAO, PAMPANGA	REY JOHN G. SERRANO ENGINEER I JEANNATHYN D. BALUYOT ENGINEER II	 RUSSEL I. HERNANDEZ CONSTRUCTION DIVISION HEAD	 WILFREDO A. MANALILI ASSISTANT PROVINCIAL ENGINEER	 OLIMPIO M. PANGAN PROVINCIAL ENGINEER	 ATTY. CHARNE G. CHUA PROVINCIAL ADMINISTRATOR	HON. DENNIS G. PINEDA GOVERNOR BY THE AUTHORITY OF THE GOVERNOR:	AS SHOWN
									02 / 08



**FRONT ELEVATION**  
SCALE: 1:100 MTS.



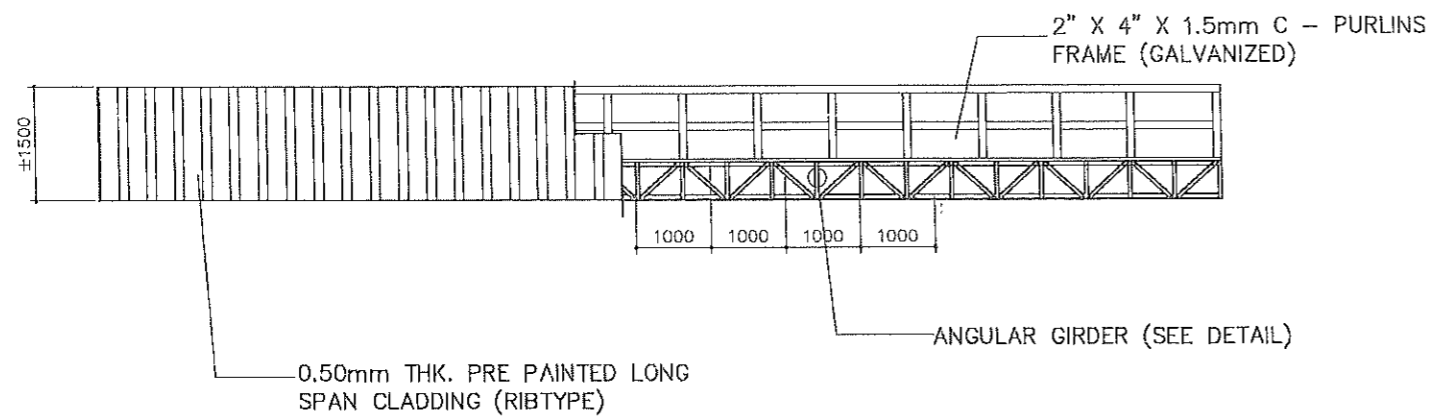
**LEFT SIDE ELEVATION**  
SCALE: 1:150 MTS.

	FROM THE OFFICE OF:	PROJECT TITLE:	PREPARED BY:	CHECKED BY:	VERIFIED & SUBMITTED BY:	RECOMMENDING APPROVAL:	APPROVED BY:	SHEET CONTENTS:	SHEET NO.:	
	REPUBLIC OF THE PHILIPPINES PROVINCE OF PAMPANGA <b>PROVINCIAL ENGINEER'S OFFICE</b> CAPITOL COMPOUND, CITY OF SAN FERNANDO, (P)	<b>IMPROVEMENT OF MULTI-PURPOSE          COVERED AREA</b>	REY JOHN G. SERRANO ENGINEER					HON. DENNIS G. PINEDA GOVERNOR BY THE AUTHORITY OF THE GOVERNOR:	AS SHOWN	3
		LOCATION: STA. CATALINA, LUBAO, PAMPANGA	JEANNAHYN D. BALUYOT ENGINEER II	RUSSEL L. HERNANDEZ CONSTRUCTION DIVISION HEAD	WILFREDO A. MANALILI ASSISTANT PROVINCIAL ENGINEER	OLIMPIO M. PANGAN PROVINCIAL ENGINEER	ATTY. CHARME G. CHUA PROVINCIAL ADMINISTRATOR		03 / 08	

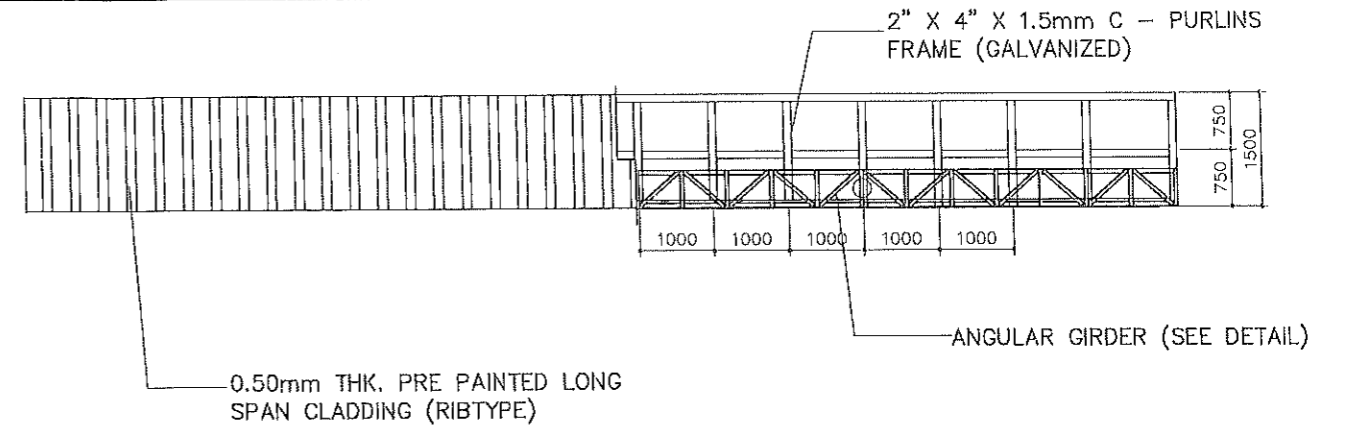




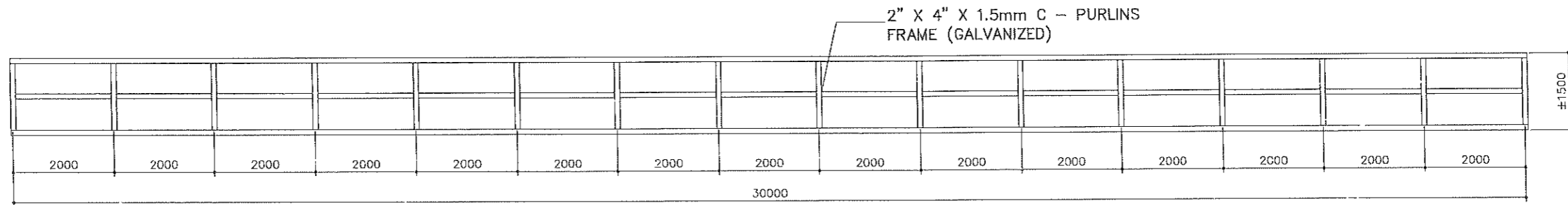




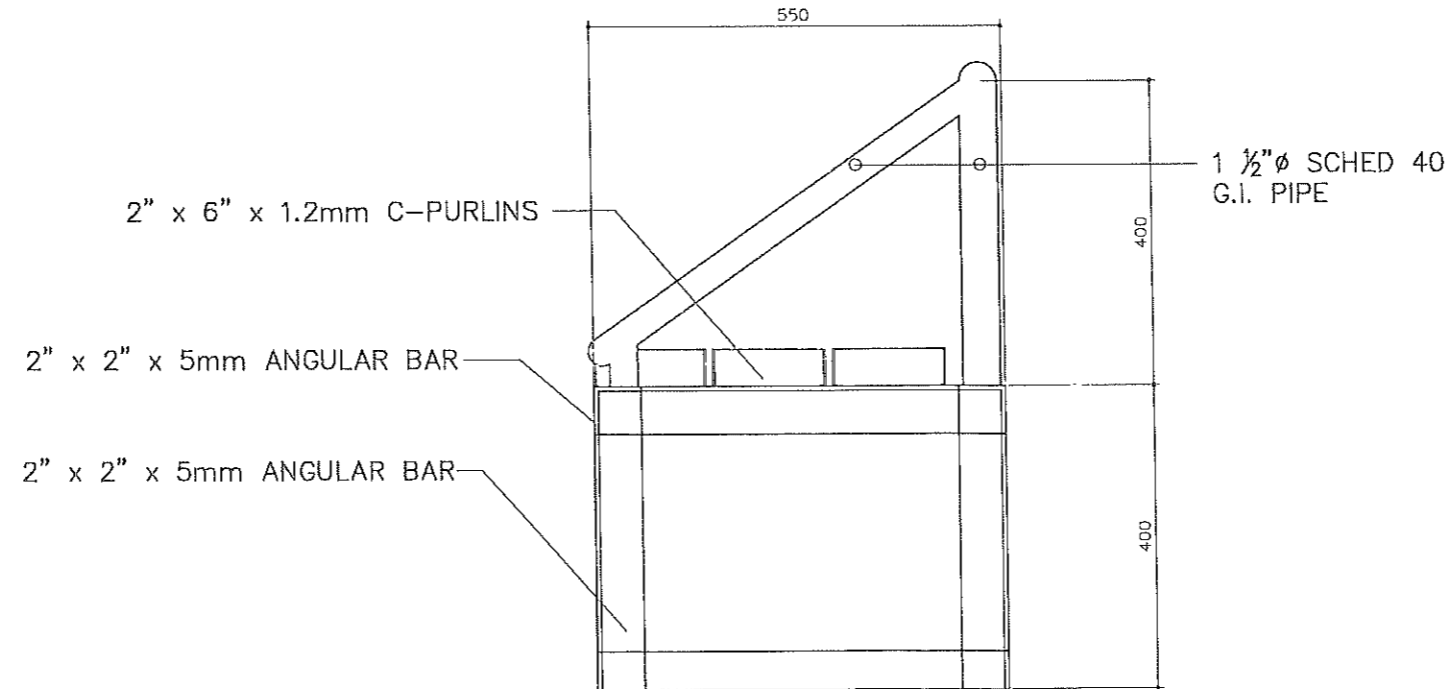
**CLADDING DETAIL (REAR ELEVATION)**  
SCALE: 1:100 MTS.



**CLADDING DETAIL (FRONT ELEVATION)**  
SCALE: 1:100 MTS.

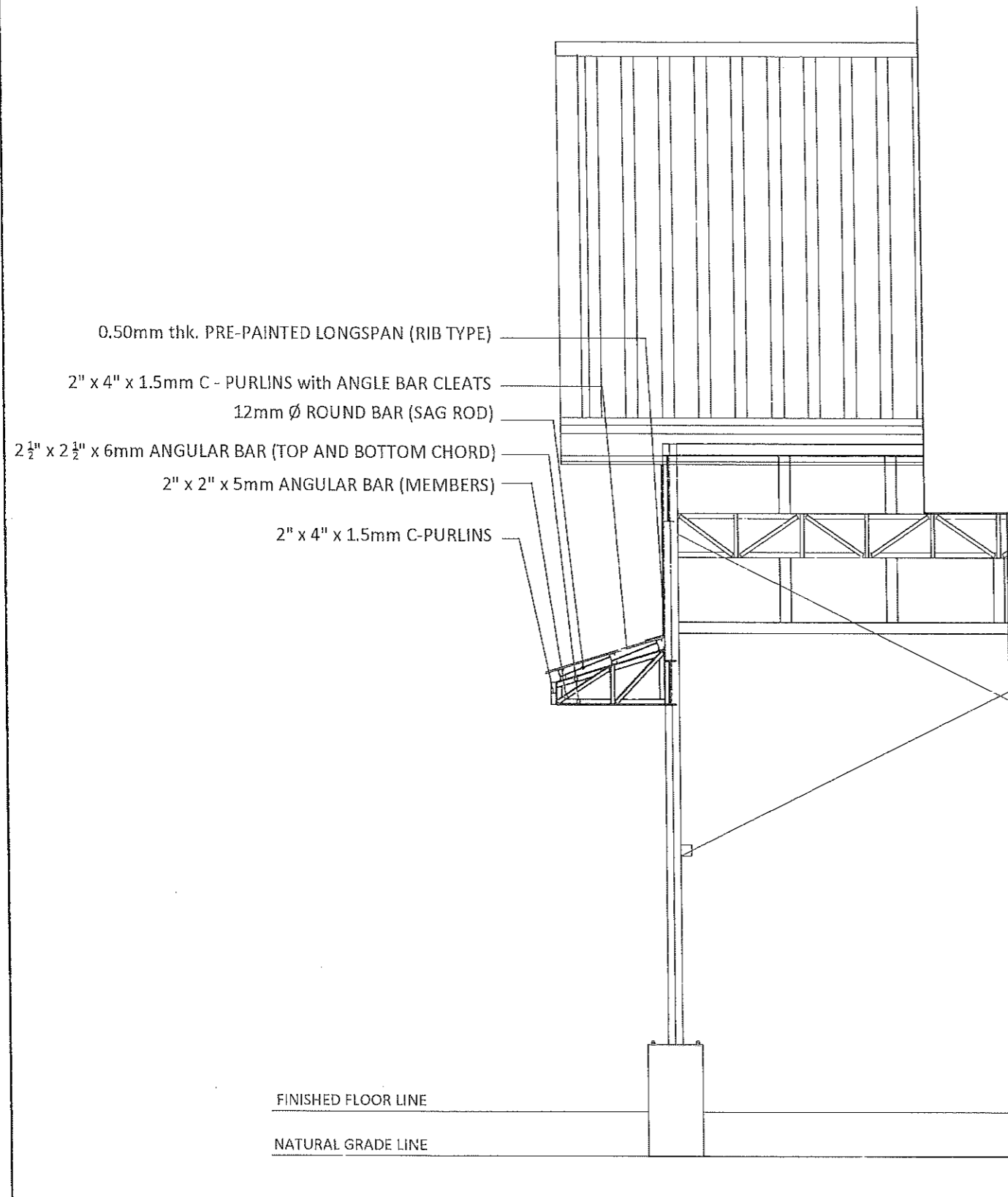


**CLADDING DETAIL AT RIGHT ELEVATION**  
SCALE: 1:100 MTS.

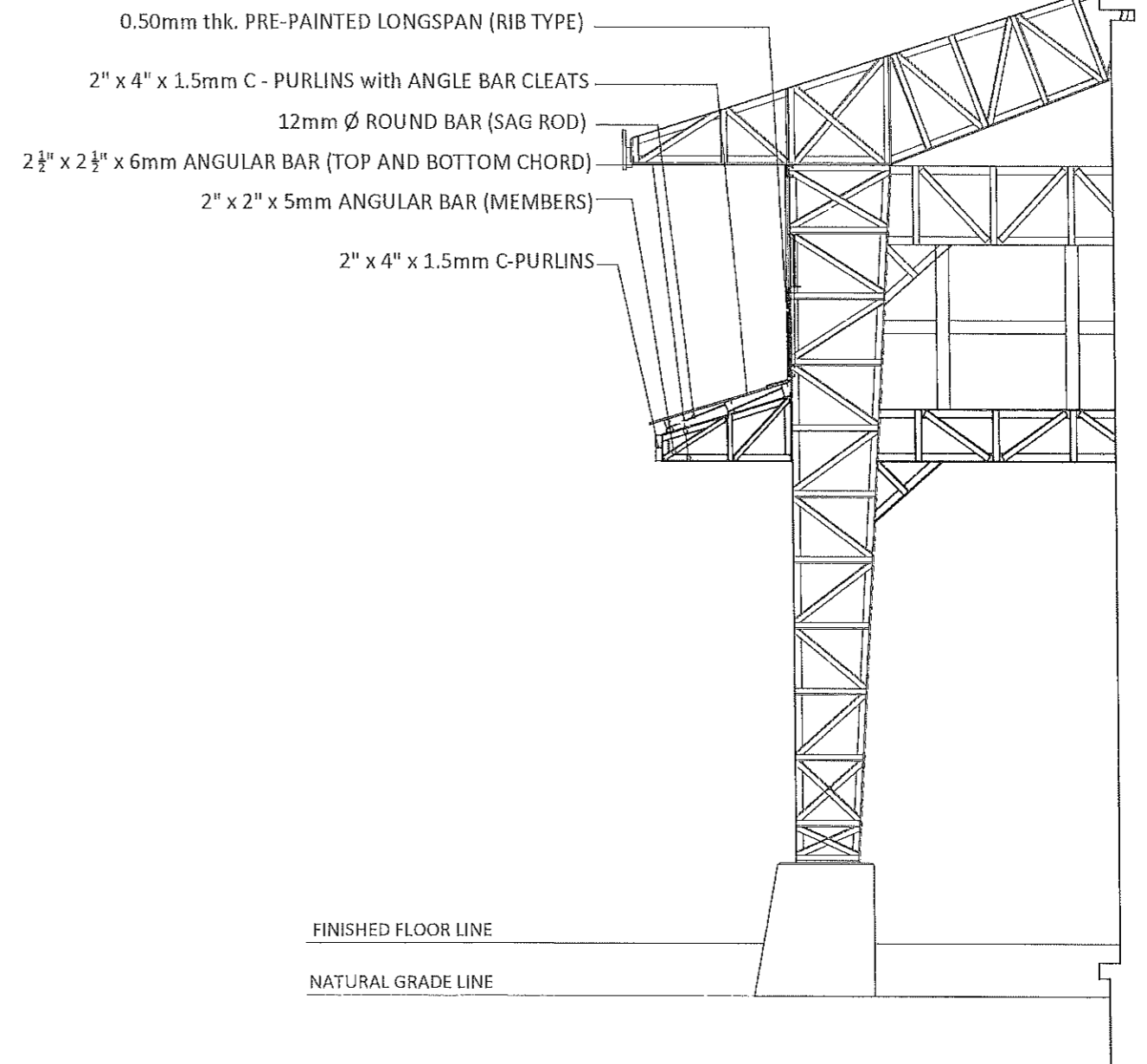


**STEEL BLEACHERS DETAIL**  
SCALE: 1:10 MTS.

	FROM THE OFFICE OF:	PROJECT TITLE:	PREPARED BY:	CHECKED BY:	VERIFIED & SUBMITTED BY:	RECOMMENDING APPROVAL:	APPROVED BY:	SHEET CONTENTS:	SHEET NO.:
	REPUBLIC OF THE PHILIPPINES PROVINCE OF PAMPANGA <b>PROVINCIAL ENGINEER'S OFFICE</b> CAPITOL COMPOUND, CITY OF SAN FERNANDO, (P)	<b>IMPROVEMENT OF MULTI-PURPOSE COVERED AREA</b>	REY JOHN G. SERRANO ENGINEER I JEANNALYN D. BALUYOT ENGINEER	 RUSSEL L. HERNANDEZ CONSTRUCTION DIVISION HEAD	 WILFREDO A. MANALILI ASSISTANT PROVINCIAL ENGINEER	 OLIMPIO M. PANGAN PROVINCIAL ENGINEER	HON. DENNIS G. PINEDA GOVERNOR BY THE AUTHORITY OF THE GOVERNOR:  ATTY. CHARLIE G. CHUA PROVINCIAL ADMINISTRATOR	AS SHOWN	6
		LOCATION: STA. CATALINA, LUBAO, PAMPANGA							06/08



**CANOPY DETAIL (REAR VIEW)**  
SCALE: 1:50 MTS.



**CANOPY DETAIL (SIDE VIEW)**  
SCALE: 1:50 MTS.

	FROM THE OFFICE OF:	PROJECT TITLE:	PREPARED BY:	CHECKED BY:	VERIFIED & SUBMITTED BY:	RECOMMENDING APPROVAL:	APPROVED BY:	SHEET CONTENTS:	SHEET NO.:
	REPUBLIC OF THE PHILIPPINES PROVINCE OF PAMPANGA <b>PROVINCIAL ENGINEER'S OFFICE</b> CAPITOL COMPOUND, CITY OF SAN FERNANDO, (P)	<b>IMPROVEMENT OF MULTI-PURPOSE COVERED AREA</b> LOCATION: STA. CATALINA, LUBAO, PAMPANGA	REY JOHN G. SERRANO ENGINEER I JEANNALYN D. BAYUYOT ENGINEER II	 RUSSEL L. HERNANDEZ CONSTRUCTION DIVISION HEAD	 WILFREDO A. MANALILI ASSISTANT PROVINCIAL ENGINEER	 OLIMPIO M. PANGAN PROVINCIAL ENGINEER	HON. DENNIS G. PINEDA GOVERNOR BY THE AUTHORITY OF THE GOVERNOR: ATTY. CHARLIE G. CHUA PROVINCIAL ADMINISTRATOR	AS SHOWN	7
									07 / 08

# GENERAL NOTES:

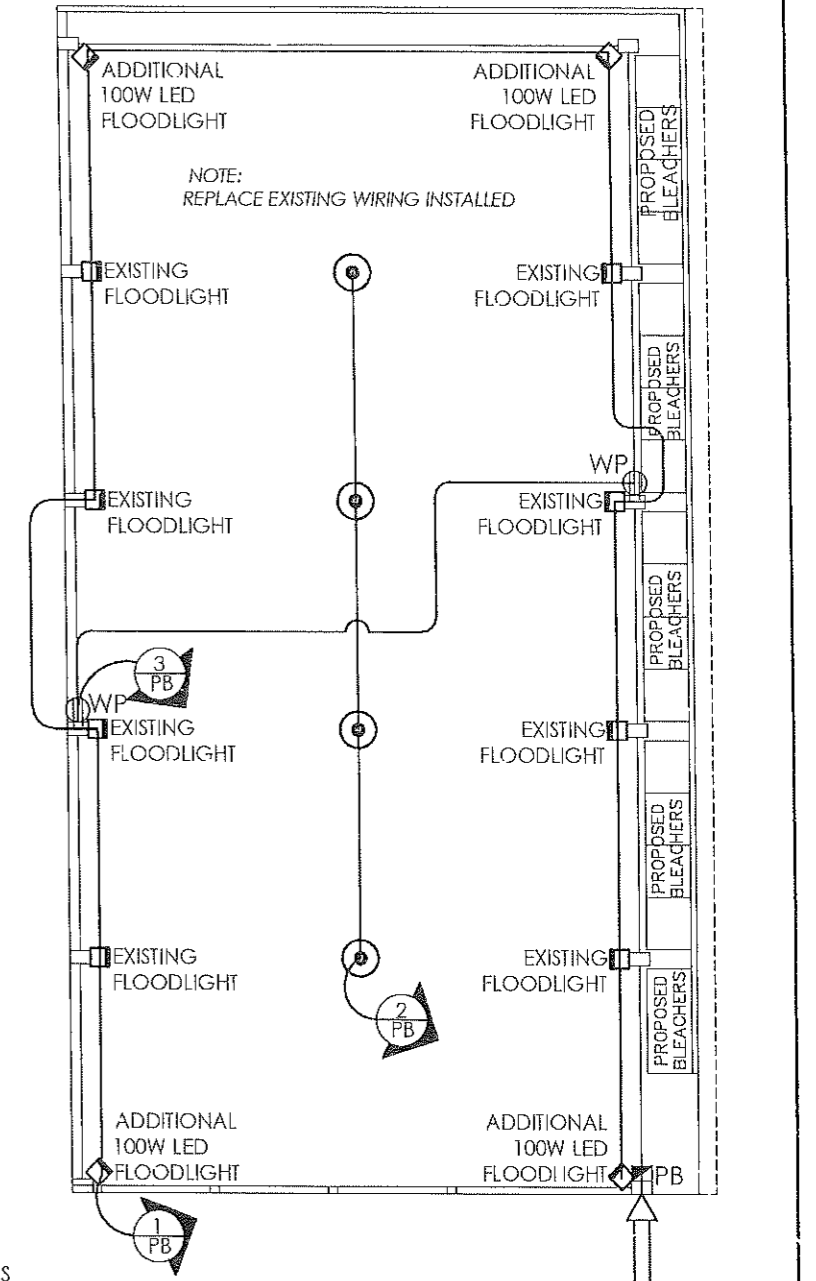
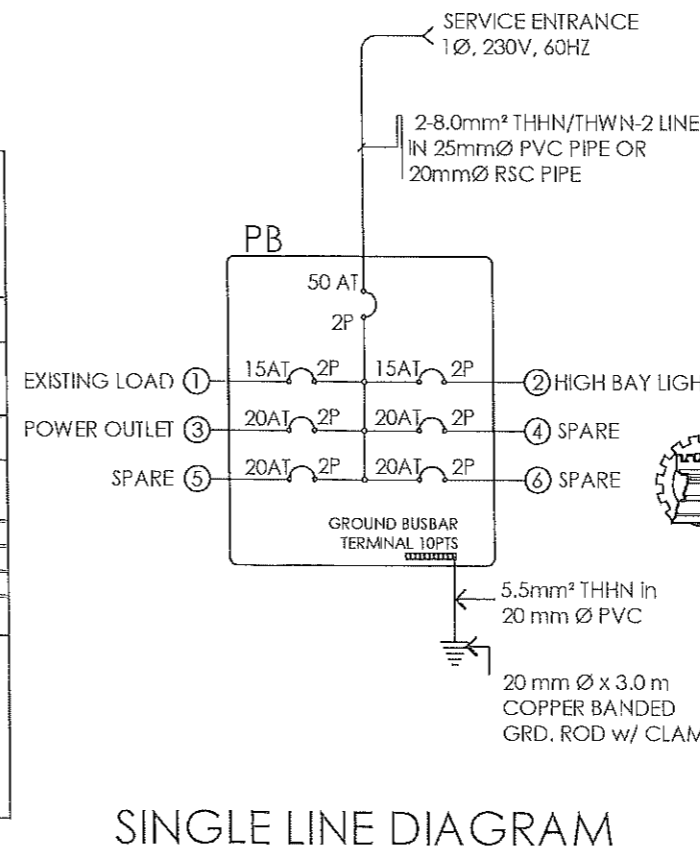
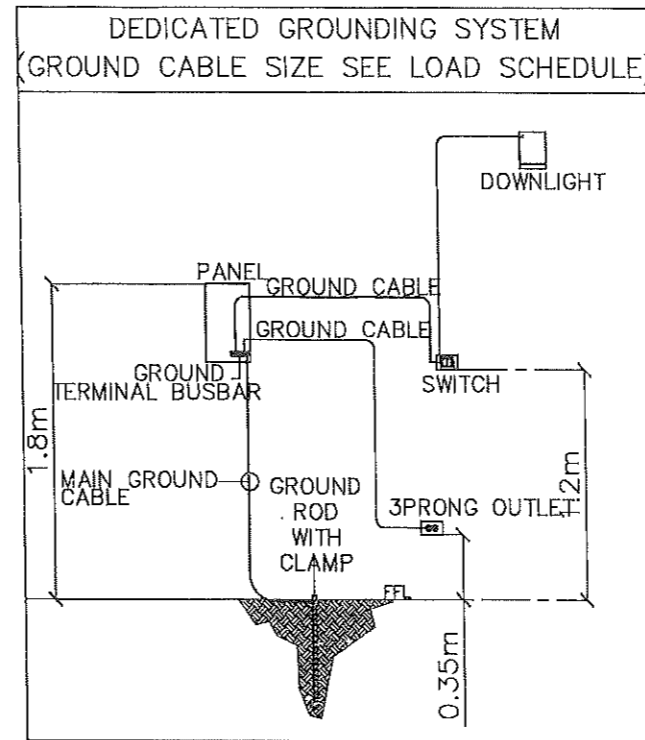
- ALL ELECTRICAL WORKS SHALL COMPLY IN ACCORDANCE WITH THESE PLANS AND SPECIFICATIONS. THE APPLICABLE PROVISIONS OF THE LATEST EDITION OF THE PHILIPPINE ELECTRICAL CODE (PEC). THE RULES AND REGULATIONS OF THE LOCAL ENFORCING AUTHORITY AND THE REQUIREMENTS OF THE LOCAL POWER COMPANY. THE ELECTRICAL WORKS SHALL BE UNDER IMMEDIATE SUPERVISION OF A DULY REGISTERED ELECTRICAL ENGINEER.
- THE ELECTRICAL SERVICE POWER IS 1-PHASE, 2-WIRE + 1-GROUND, 230V AC, 60HZ.
- WIRING METHOD SHALL BE AS FOLLOWS:
  - FEEDERS AND RISERS - INTERMEDIATE METALLIC CONDUIT
  - LIGHTING POWER RECEPTACLE - POLYVINYL CHLORIDE CONDUIT BRANCH CKT. & AUXILIARY, SCH. 40.
- ALL WIRES SHALL BE COPPER AND THERMOPLASTIC INSULATED TYPE "THHN" UNLESS OTHERWISE INDICATED IN THE PLAN. THE MINIMUM SIZE OF WIRE FOR POWER AND LIGHTING CIRCUIT HOMERUN SHALL BE 3.5mm<sup>2</sup> AND INSULATED FOR 600 VOLTS. SMALLEST RACEWAY SHALL BE 20mmØ TRADE/NORMAL SIZE.
- ALL OUTLET BOXES SHALL BE GALVANIZED GAGE NO. 16 DEEP TYPE WITH FACTORY KNOCKOUTS.
- ALL MATERIALS TO BE USED SHALL BE BRAND NEW AND APPROVED TYPE FOR THE PARTICULAR LOCATION AND PURPOSE OF USAGE.
- GROUNDING SYSTEM SHALL BE PROVIDED TO ALL LIGHTING AND POWER CIRCUIT AS PER PHILIPPINE ELECTRICAL CODE REQUIREMENT.
- WHENEVER NECESSARY PULL BOXES SHALL BE PROVIDED EVEN IF NOT INDICATED IN THE PLANS. ALL ELECTRICAL WORKS SHALL BE DONE UNDER THE DIRECT AND IMMEDIATE SUPERVISION OF A DULY QUALIFIED LICENSED ELECTRICAL ENGINEER.
- MOUNTING HEIGHT OF WIRING DEVICES SHALL BE AS FOLLOWS:
  - LIGHTING SWITCH - 1.20 m ABOVE FINISHED FLOOR
  - CONVENIENCE OUTLET - 0.30 m ABOVE FINISHED FLOOR
  - WALL FAN OUTLET - 1.80 m ABOVE FINISHED FLOOR
  - PANEL BOARD - 1.80 m ABOVE FINISHED FLOOR

## LOAD CALCULATION

CKT. NO.	DESCRIPTION	CONNECTED LOAD				OVER CURRENT PROTECTION				SIZE OF WIRE AND PVC CONDUITS
		V	VA	A	AT	AF	P	EA		
1	3-LED FLOOD LIGHT (EXISTING LOAD), 4-1 X 100W LED FLOOD LIGHT (ADDITIONAL)	230	1200	5.22	15	50	2	10	2-3.5mm <sup>2</sup> THHN/THWN-2 LINE + 2.0mm <sup>2</sup> THHN/THWN-2 GROUND IN 20 mm DIA. PVC CONDUIT or 15mm dia. EMT Conduit	
2	4-1 X 100W LED HIGH BAY LIGHTS	230	400	1.74	15	50	2	10	2-3.5mm <sup>2</sup> THHN/THWN-2 LINE + 2.0mm <sup>2</sup> THHN/THWN-2 GROUND IN 20 mm DIA. PVC CONDUIT or 15mm dia. EMT Conduit	
3	2-1 X 180W DUPLEX CONVENIENCE OUTLET (WEATHERPROOF)	230	360	1.57	20	50	2	10	2-3.5mm <sup>2</sup> THHN/THWN-2 LINE + 2.0mm <sup>2</sup> THHN/THWN-2 GROUND IN 20 mm DIA. PVC CONDUIT or 15mm dia. EMT Conduit	
4	SPARE	230	1500	6.52	20	50	2	10	20mmØ PVC CONDUIT STUB-OUT	
5	SPARE	230	1500	6.52	20	50	2	10	20mmØ PVC CONDUIT STUB-OUT	
6	SPARE	230	1500	6.52	20	50	2	10	20mmØ PVC CONDUIT STUB-OUT	
TOTAL CONNECTED LOAD:			6460	28.09						

FEEDER LINE COMPUTATION:	MAIN CIRCUIT BREAKER COMPUTATION:	USE:
$I = (28.087) 100\% OF$	$I = (28.037) 100\% OF$	50A/100AF, 2P, MCCB
$I = 28.09 Amps$	$I = 28.09 Amps$	2-8mm <sup>2</sup> THHN/THWN-2 (L) + 5.5mm <sup>2</sup> THHN/THWN-2 (G) IN 25 mmØ PVC CONDUIT OR IN 20mmØ RSC CONDUIT



**LIGHTING AND POWER LAYOUT**  
SCALE: 1:200 MTS.

**LEGEND**

	100W LED HIGH BAY LIGHT
	LED FLOODLIGHT (EXISTING)
	PANELBOARD
	DUPLEX CONVENIENCE OUTLET (WEATHERPROOF)
	HOMERUN

FROM THE OFFICE OF: <b>REPUBLIC OF THE PHILIPPINES</b> PROVINCE OF PAMPANGA <b>PROVINCIAL ENGINEER'S OFFICE</b> CAPITOL COMPOUND, CITY OF SAN FERNANDO, (P)	PROJECT TITLE: <b>IMPROVEMENT OF MULTI-PURPOSE COVERED AREA</b> LOCATION: STA. CATALINA, LUBAO, PAMPANGA	PREPARED BY: REY JOHN G. SERRANO MICHAEL Y. MONTEMAYOR ENGINEER III	CHECKED BY: RUSSELL HERNANDEZ CONSTRUCTION DIVISION HEAD	VERIFIED & SUBMITTED BY: WILFREDO A. MANALLILI ASSISTANT PROVINCIAL ENGINEER	RECOMMENDING APPROVAL: OLIMARIO M. PANGAN PROVINCIAL ENGINEER	APPROVED BY: HON. DENNIS G. PINEDA GOVERNOR BY THE AUTHORITY OF THE GOVERNOR: ATTY. CHARLIE G. CHUA PROVINCIAL ADMINISTRATOR	SHEET CONTENTS: AS SHOWN SHEET NO.: <b>8</b> 08 / 08
---	---	--	--	--	---	---	--