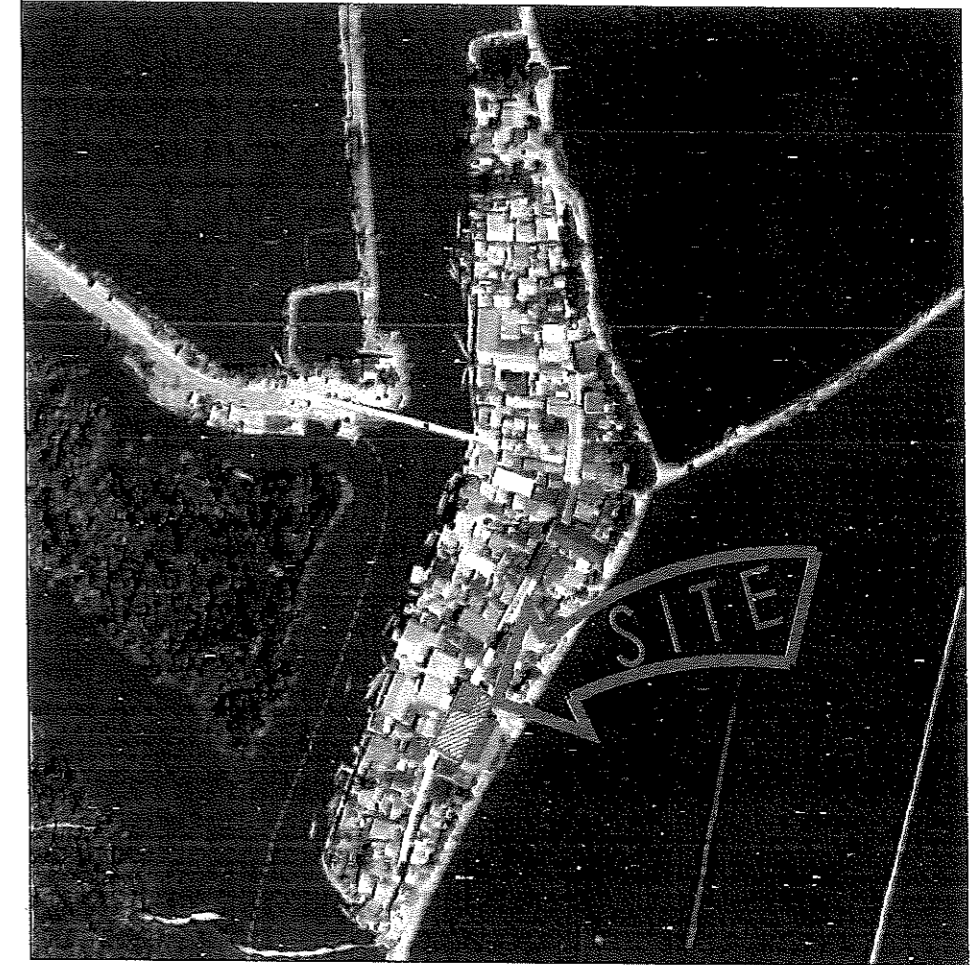
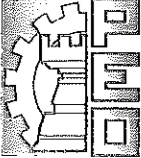



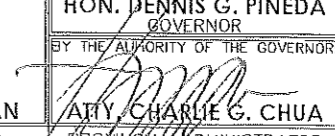


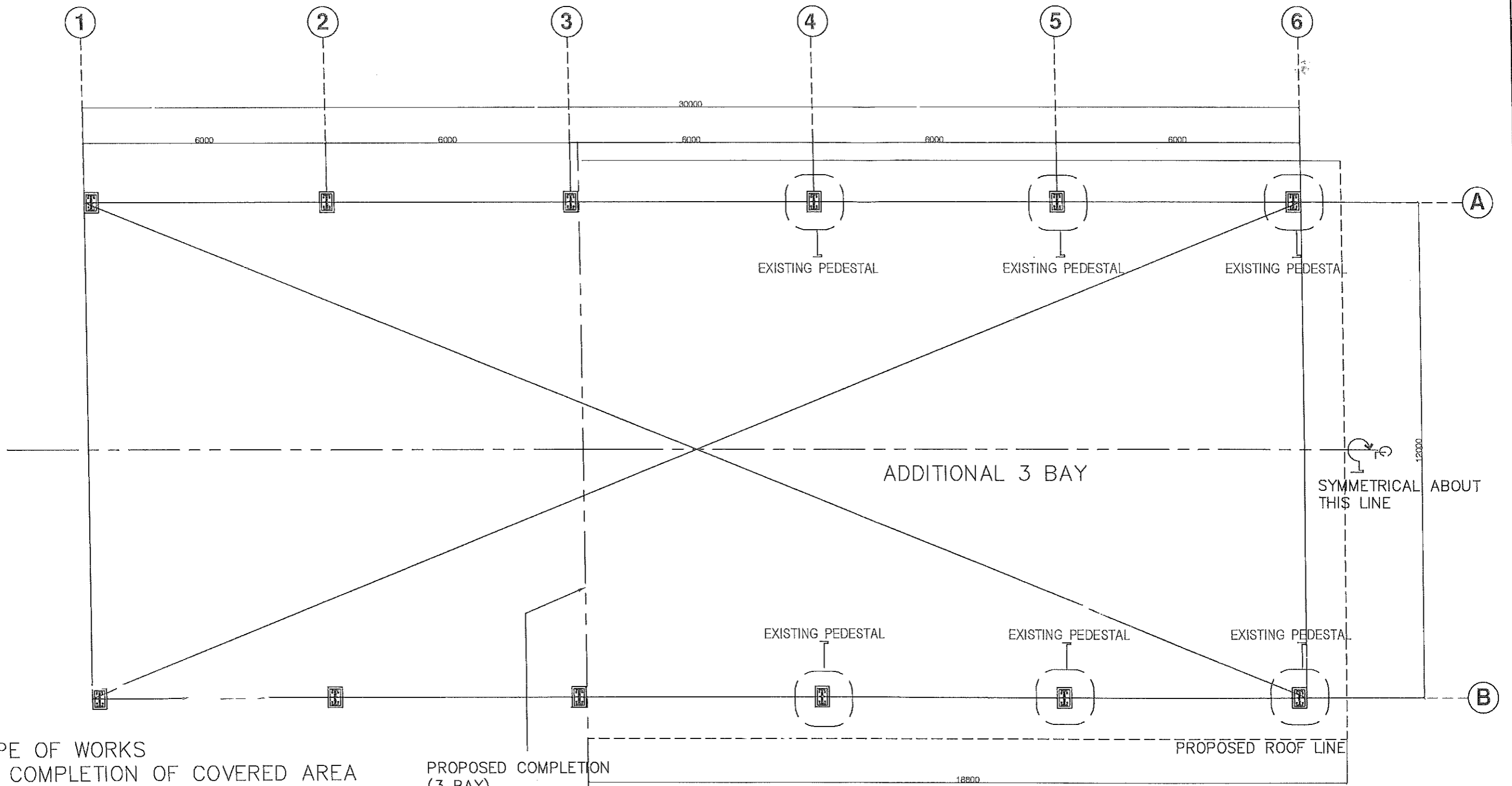


PERSPECTIVE



VICINITY MAP
SCALE: NTS.

	FROM THE OFFICE OF:	PROJECT TITLE:	PREPARED BY:	CHECKED BY:	VERIFIED & SUBMITTED BY:	RECOMMENDING APPROVAL:	APPROVED BY:	SHEET CONTENTS:	SHEET NO.:
	REPUBLIC OF THE PHILIPPINES PROVINCE OF PAMPANGA PROVINCIAL ENGINEER'S OFFICE CAPITOL COMPOUND, CITY OF SAN FERNANDO, (P)	CONSTRUCTION/COMPLETION OF MULTI-PURPOSE COVERED AREA LOCATION: BANCAL SINUBLI, LUBAO, PAMPANGA	MIZ CLARITA G. MAGPAYO ENGINEER I PETER CRIS G. LAXA ENGINEER II	 RUSSEL C. HERNANDEZ CONSTRUCTION DIVISION HEAD	 WILFREDO A. MANALILI ASSISTANT PROVINCIAL ENGINEER	 OLIMPIO M. PANGAN PROVINCIAL ENGINEER	 ATTY. CHARLIE G. CHUA PROVINCIAL ADMINISTRATOR	HON. DENNIS G. PINEDA GOVERNOR BY THE AUTHORITY OF THE GOVERNOR:	AS SHOWN



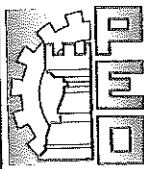
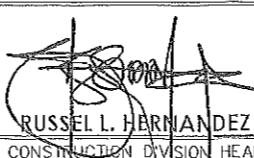
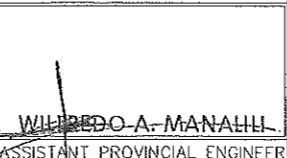

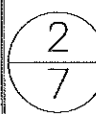
SCOPE OF WORKS

- COMPLETION OF COVERED AREA
- INSTALLATION OF LOUVERS
- ADDITIONAL CLADDING AT FRONT AND REAR ELEVATION
- REPLACEMENT OF EXISTING GUTTER AND DOWNSPOUT
- REPAINTING OF EXISTING ROOFING SHEETS, STEEL TRUSSES, POSTS AND BRACES
- ELECTRICAL WORKS

PROPOSED COMPLETION (3 BAY)

FLOOR PLAN

SCALE: 1:100 MTS.

	FROM THE OFFICE OF:	PROJECT TITLE:	PREPARED BY:	CHECKED BY:	VERIFIED & SUBMITTED BY:	RECOMMENDING APPROVAL:	APPROVED BY:	SHEET CONTENTS:	SHEET NO.:
	REPUBLIC OF THE PHILIPPINES PROVINCE OF PAMPANGA PROVINCIAL ENGINEER'S OFFICE CAPITOL COMPOUND, CITY OF SAN FERNANDO, (P)	CONSTRUCTION/COMPLETION OF MULTI-PURPOSE COVERED AREA LOCATION: BANCAL SINUBLI, LUBAO, PAMPANGA	LUZ CLARITA G. MAGPAYO ENGINEER I PETER CRIS G. LAXA ENGINEER II	 RUSSEL L. HERNANDEZ CONSTRUCTION DIVISION HEAD	 WILFREDO A. MANAHILL ASSISTANT PROVINCIAL ENGINEER	 OLIMPIO M. PANGAN PROVINCIAL ENGINEER	HON. DENNIS G. PINEDA GOVERNOR BY THE AUTHORITY OF THE GOVERNOR: ATTY. CHARLIE G. CHUA PROVINCIAL ADMINISTRATOR	AS SHOWN	

REPAINTING OF EXISTING 2-BAY ROOF AND ROOF FRAMING

REPAINTING OF EXISTING STEEL POSTS, TRUSSES AND BRACES

TOP OF TRUSS

8000

REPLACEMENT OF EXISTING GUTTER AND DOWNSPOUT

TOP OF PEDESTAL POST

CB

CB

CB

CB

0.50mm THK. PRE-PAINTED RIDGE ROLL

0.50mm THK. PRE-PAINTED LONG SPAN RIB TYPE ROOFING SHEET

0.50mm THK. PRE-PAINTED FLASHING

18800

5850

5850

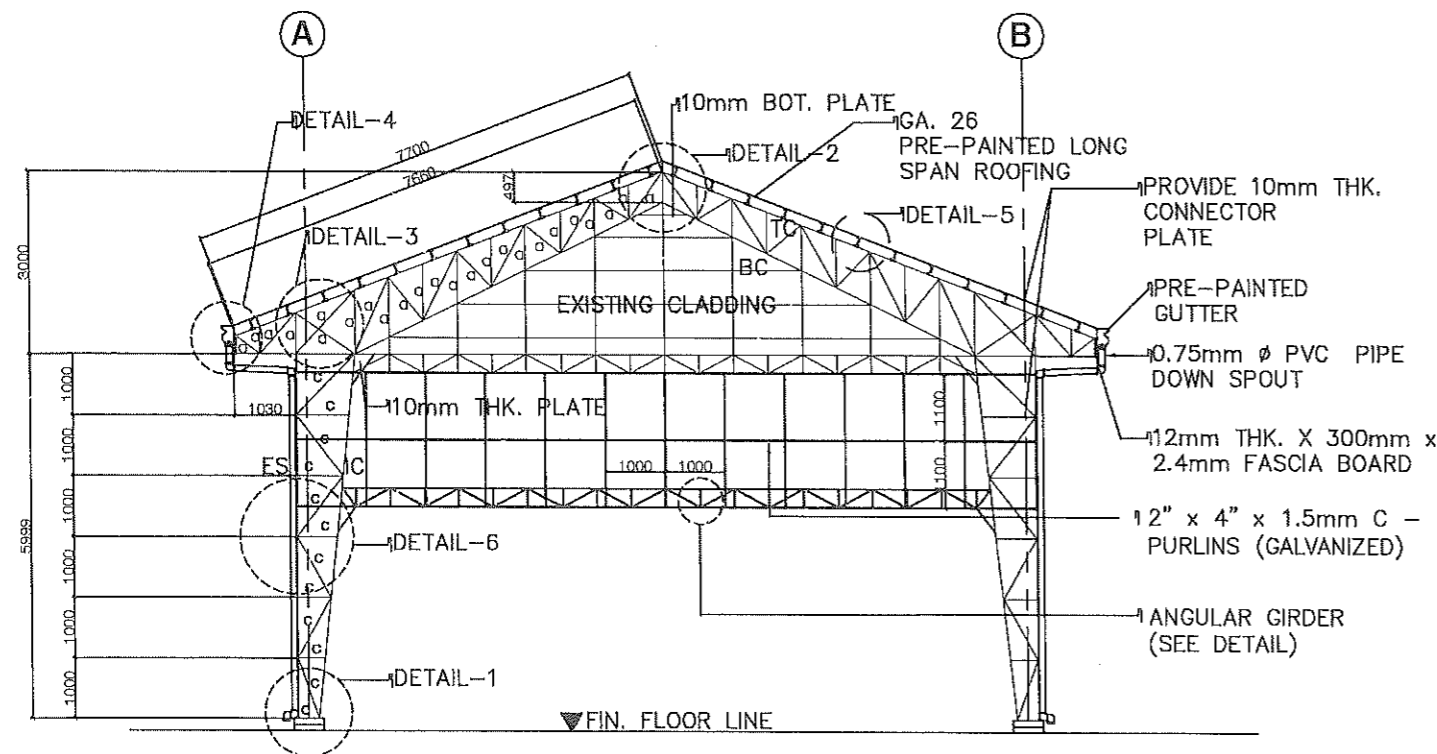
5675

SEE LATERAL BRACE DETAILS

FIN. FLOOR LINE

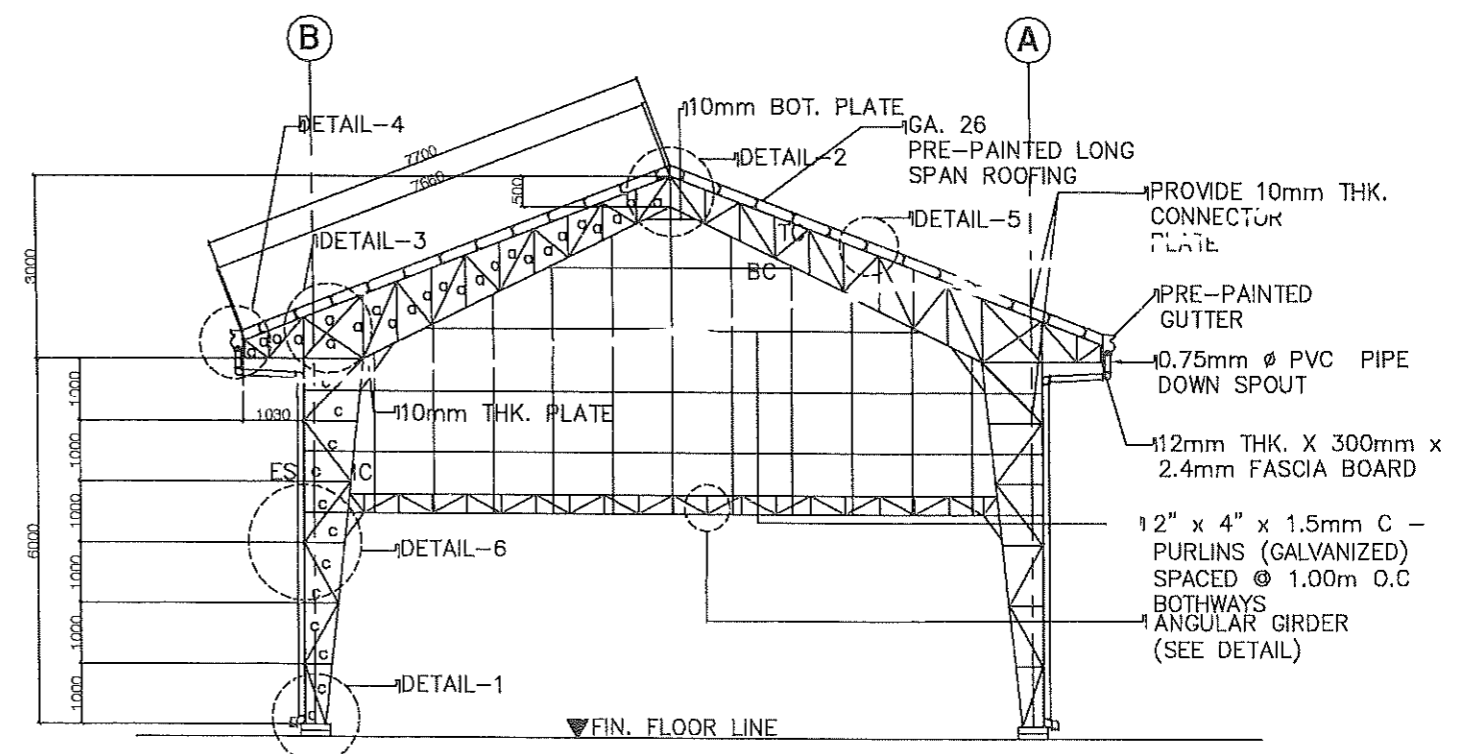
TYPICAL SIDE ELEVATION

SCALE: 1:125 MTS.



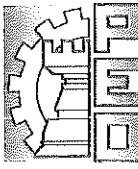
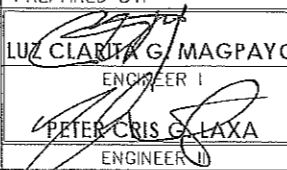
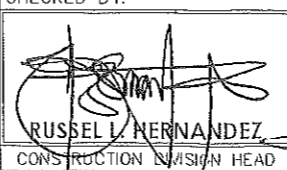
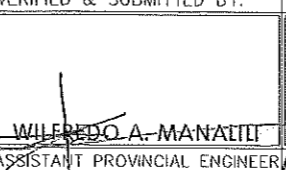
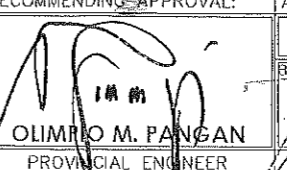
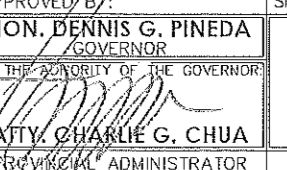
FRONT FRAME SECTION

SCALE: 1:125 MTS.



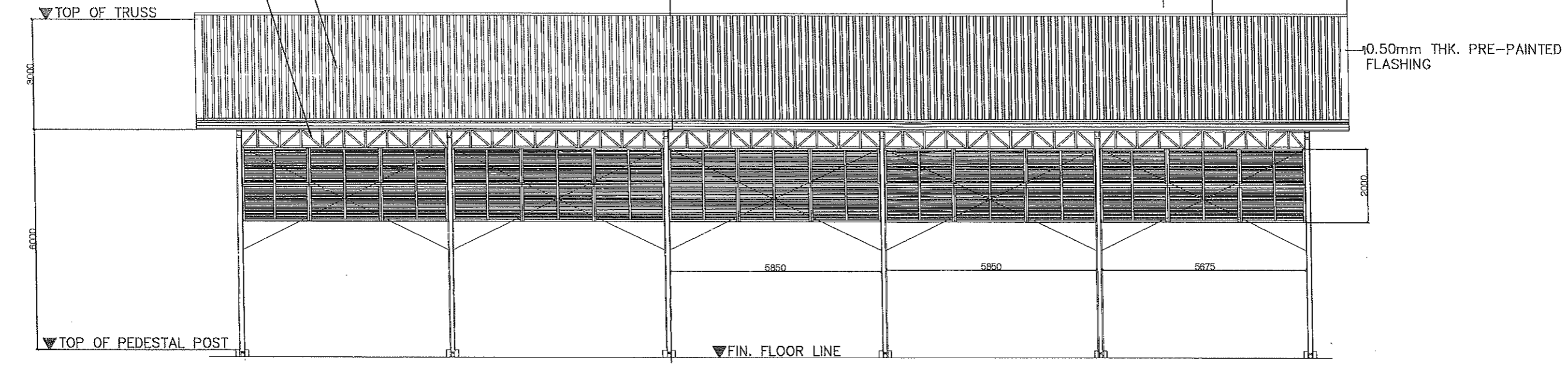
REAR FRAME SECTION

SCALE: 1:125 MTS.

	FROM THE OFFICE OF:	PROJECT TITLE:	PREPARED BY:	CHECKED BY:	VERIFIED & SUBMITTED BY:	RECOMMENDING APPROVAL:	APPROVED BY:	SHEET CONTENTS:	SHEET NO.:
	REPUBLIC OF THE PHILIPPINES PROVINCE OF PAMPANGA PROVINCIAL ENGINEER'S OFFICE CAPITOL COMPOUND, CITY OF SAN FERNANDO, (P)	CONSTRUCTION/COMPLETION OF MULTI-PURPOSE COVERED AREA	LUZ CLARITA G. MAGPAYO ENGINEER I	 PETER CRIS G. LAXA ENGINEER II	 RUSSEL L. HERNANDEZ CONSTRUCTION DIVISION HEAD	 WILFREDO A. MANAITITI ASSISTANT PROVINCIAL ENGINEER	 OLIMPIO M. PANGAN PROVINCIAL ENGINEER	HON. DENNIS G. PINEDA GOVERNOR BY THE AUTHORITY OF THE GOVERNOR  ATTY. CHARLIE G. CHUA PROVINCIAL ADMINISTRATOR	AS SHOWN

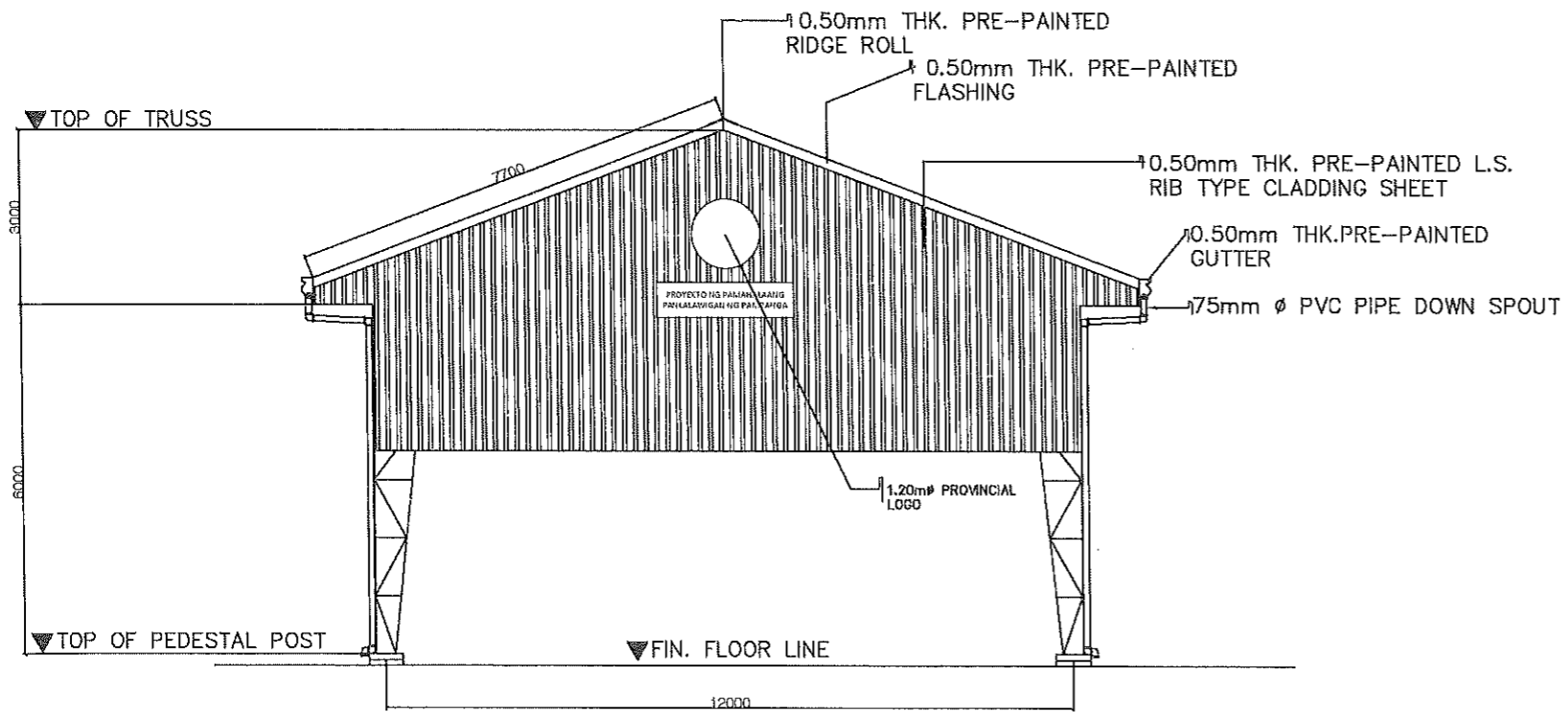
REPAINTING OF EXISTING 2-BAY ROOF AND ROOF FRAMING

REPAINTING OF EXISTING STEEL POSTS, TRUSSES AND BRACES



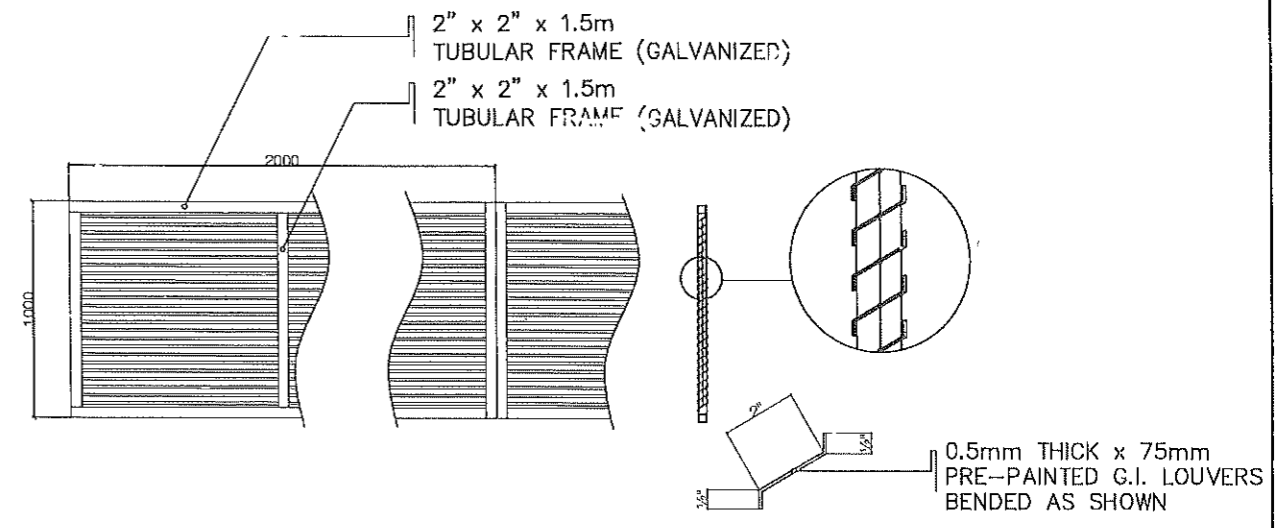
TYPICAL SIDE ELEVATION

SCALE: 1:125 MTS.



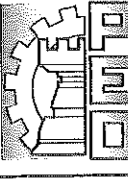
FRONT ELEVATION

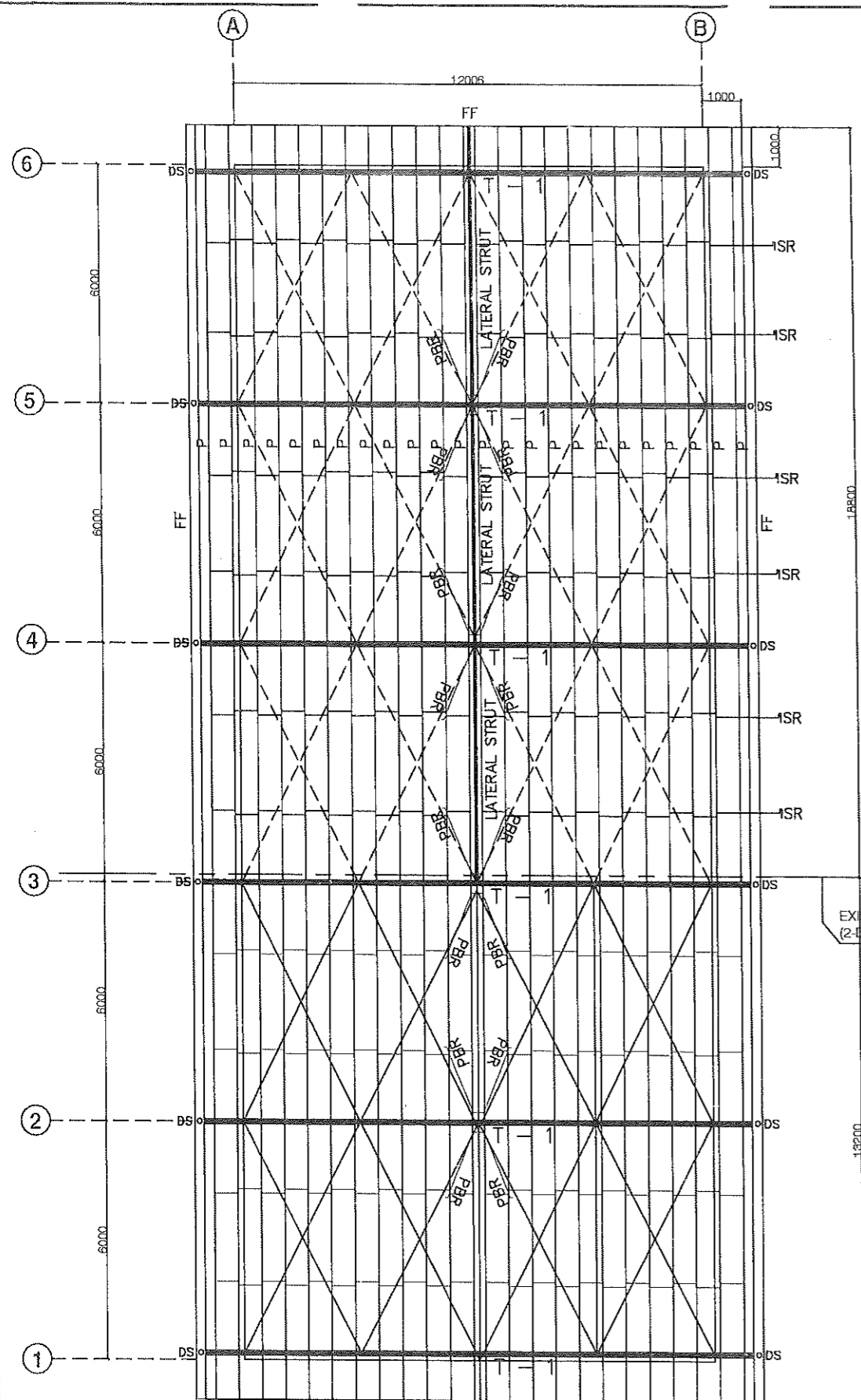
SCALE: 1:125 MTS.



DETAIL OF LOUVERS

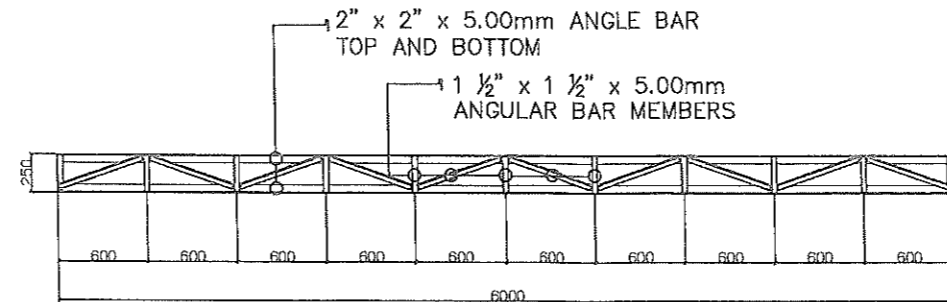
SCALE: NTS.

	FROM THE OFFICE OF:	PROJECT TITLE:	PREPARED BY:	CHECKED BY:	VERIFIED & SUBMITTED BY:	RECOMMENDING APPROVAL:	APPROVED BY:	SHEET CONTENTS:	SHEET NO.:
	REPUBLIC OF THE PHILIPPINES PROVINCE OF PAMPANGA PROVINCIAL ENGINEER'S OFFICE CAPITOL COMPOUND, CITY OF SAN FERNANDO, (P)	CONSTRUCTION/COMPLETION OF MULTI-PURPOSE COVERED AREA LOCATION: BANCAL SINUBLI, LUBAO, PAMPANGA	LIZ CLARIA G. MAGPAYO ENGINEER I PETER CRIS G. LAXA ENGINEER I	RUSSEL L. HERNANDEZ CONSTRUCTION DIVISION HEAD	WILFREDO A. MANALILI ASSISTANT PROVINCIAL ENGINEER	OLIMPIO M. PANGAN PROVINCIAL ENGINEER	HON. DENNIS G. PINEDA GOVERNOR BY THE AUTHORITY OF THE GOVERNOR ATTY. CHARLIE G. CHUA PROVINCIAL ADMINISTRATOR	AS SHOWN	<div style="border: 1px solid black; border-radius: 50%; width: 30px; height: 30px; display: flex; align-items: center; justify-content: center;"> 4 7 </div>



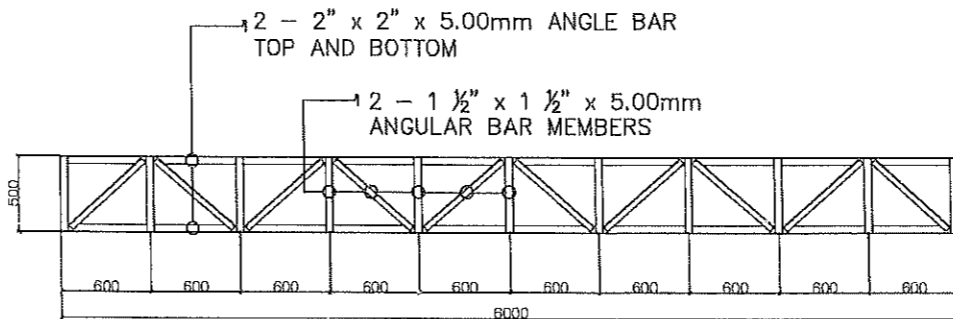
ROOF FRAMING PLAN

SCALE: 1:150 MTS.



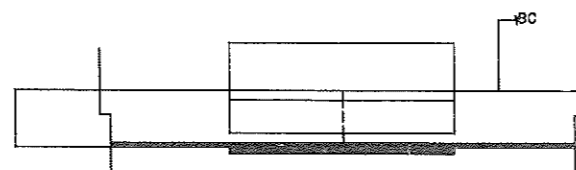
DETAIL OF LATERAL STRUT

SCALE: 1:50 MTS.



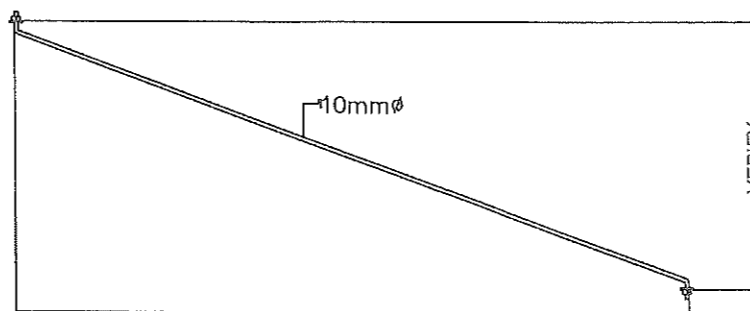
DETAIL OF LATERAL BRACE

SCALE: 1:50 MTS.



SPLICE DETAIL

SCALE: 1:5 MTS.



PURLIN BRACE ROD

SCALE: 1:20 MTS.

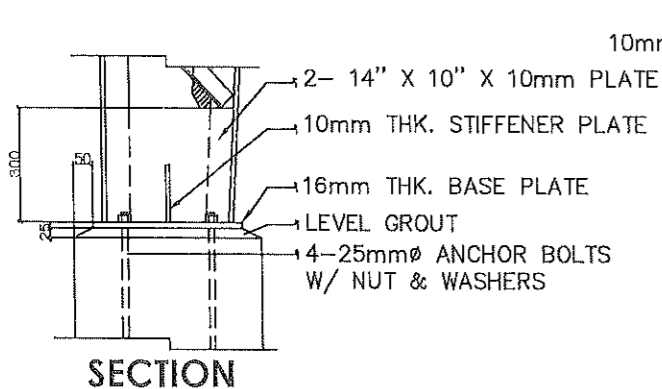
LEGENDS:

MARK	DESCRIPTION	SIZE
T-1	TRUSS	TC - 2 L 3" X 3" X 5.00mm
		BC - 2 L 3" X 3" X 5.00mm
		a - 2 L 2" X 2" X 5.00mm
C-1	COLUMN FRAME -1	Es - 2 L 3" X 3" X 5.00mm
		IC - 2 L 3" X 3" X 5.00mm
		c - 2 L 2" X 2" X 4.5mm
P	PURLIN	2" X 7" X 2.00mm
	PURLIN STAND	L 3" X 3" X 5.00mm
PBR	PURLIN BRACE ROD	10mmØ
SR	SAG ROD	12mmØ
RB	ROOF BRACE	20mmØ
CB	COLUMN BRACE	16mmØ W/ TURNBUCKLE
FF	FASCIA FRAME	2" X 2" X 4.00mm

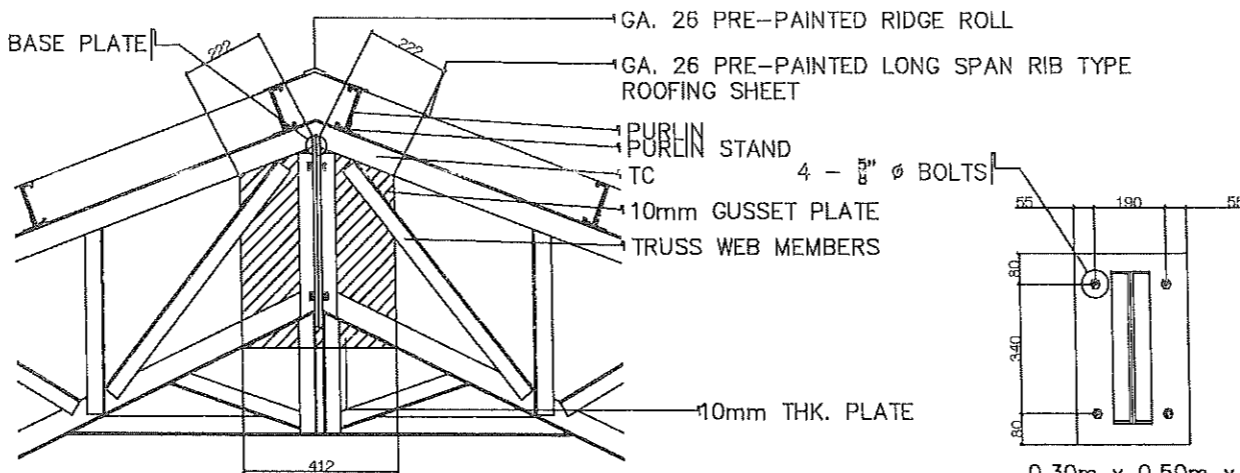
STRUCTURAL STEEL NOTES:

1. PLATES, SHAPES & ANGLES – ASTM A36
LIGHT GAGE STEEL – JIS SSCI BOLT &
NUTS – ASTM A307 PLAIN ROUND BARS –
M20 WELDING ELECTRODES – E60xx
2. PROVIDE 6mm thk. FILLER PLATES AT
EVERY INTERMEDIATE LENGTH OF WEB
MEMBERS.
3. SHOP DRAWINGS SHALL BE VERIFIED BY
THE DESIGNER PRIOR TO ANY FABRICATION
OR ERECTION.
4. STEEL ITEMS TO RECEIVE TWO (2) COATS
OF OXIDE PRIMER.

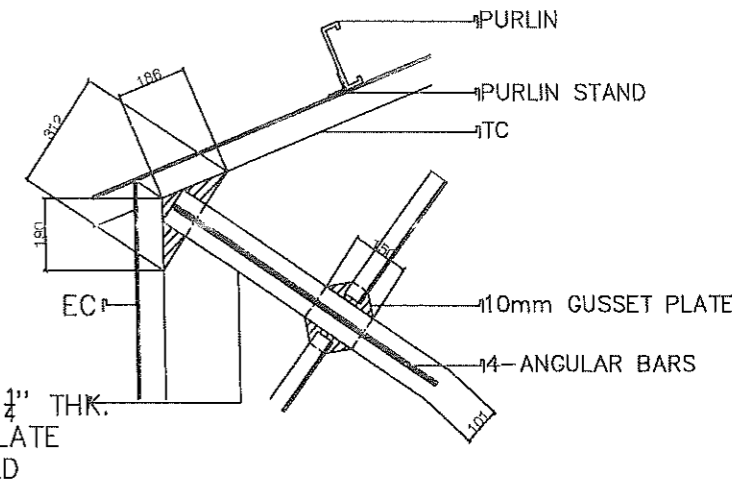
	FROM THE OFFICE OF:	PROJECT TITLE:	PREPARED BY:	CHECKED BY:	VERIFIED & SUBMITTED BY:	RECOMMENDING APPROVAL:	APPROVED BY:	SHEET CONTENTS:	SHEET NO.:
	REPUBLIC OF THE PHILIPPINES PROVINCE OF PAMPANGA PROVINCIAL ENGINEER'S OFFICE CAPITOL COMPOUND, CITY OF SAN FERNANDO, (P)	CONSTRUCTION/COMPLETION OF MULTI-PURPOSE COVERED AREA	LUZ CLARVA G. MAGPAYO ENGINEER I	PETER CRIS G. LAXA ENGINEER II	RUSSEL I. HERNANDEZ CONSTRUCTION DIVISION HEAD	WILFREDO A. MANALI ASSISTANT PROVINCIAL ENGINEER	OLIMPIO M. PANSAN PROVINCIAL ENGINEER	HON. DENNIS G. PINEDA GOVERNOR BY THE AUTHORITY OF THE GOVERNOR ATTY. CHARME G. CHUA PROVINCIAL ADMINISTRATOR	AS SHOWN



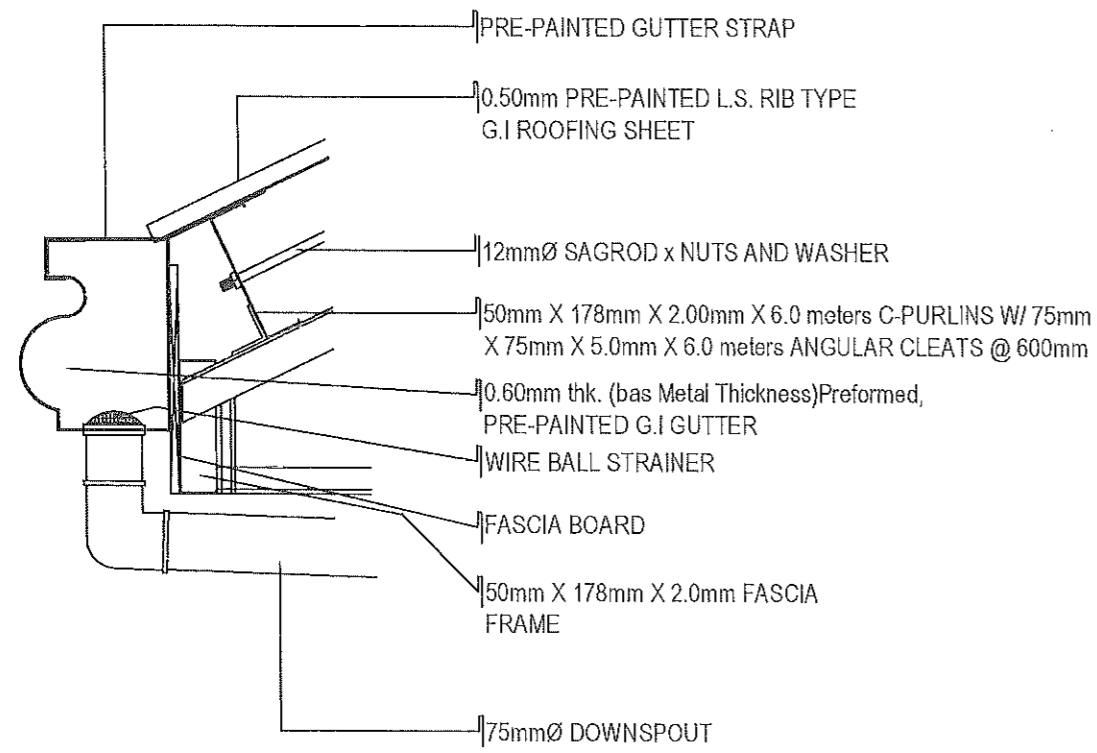
DETAIL - 1
SCALE: 1:20 MTS.



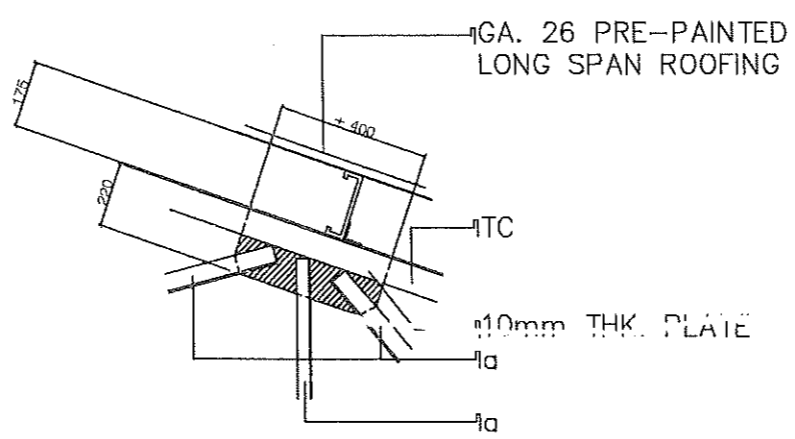
DETAIL - 2
SCALE: 1:20 MTS.



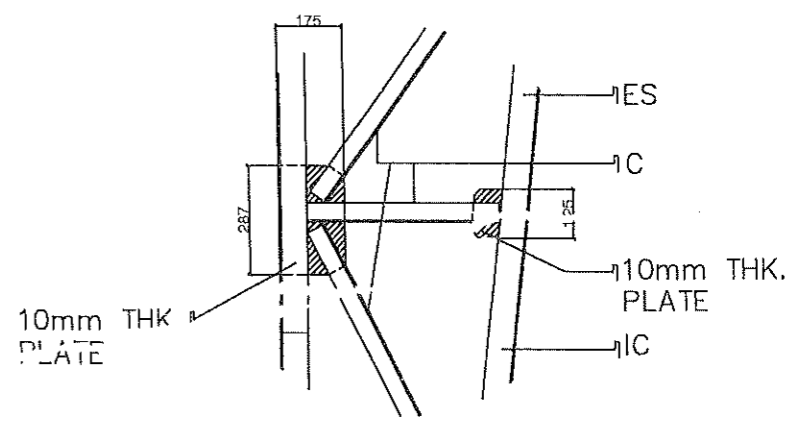
DETAIL - 3
SCALE: 1:20 MTS.



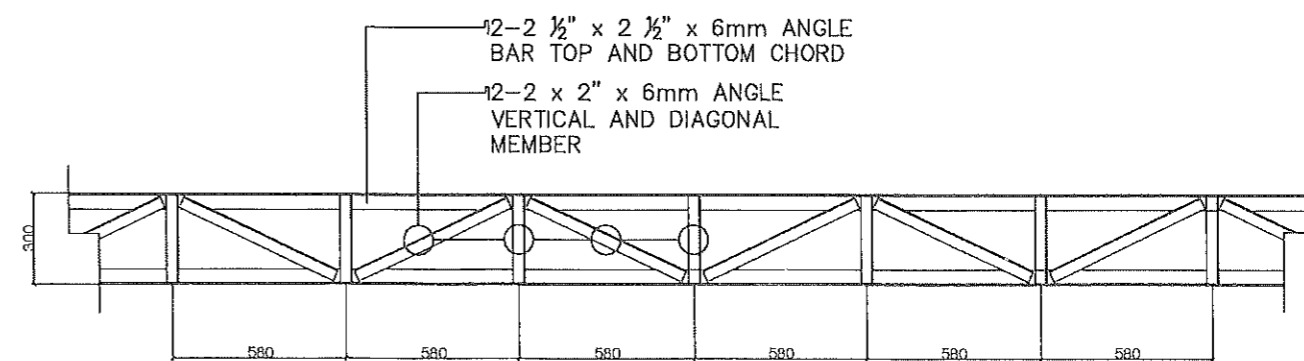
DETAIL - 4
SCALE: NTS.



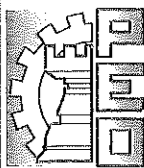
DETAIL - 5
SCALE: 1:20 MTS.



DETAIL - 6
SCALE: 1:20 MTS.



DETAIL OF ANGULAR GIRDER
SCALE: 1:25 MTS.

	FROM THE OFFICE OF:	PROJECT TITLE:	PREPARED BY:	CHECKED BY:	VERIFIED & SUBMITTED BY:	RECOMMENDING APPROVAL:	APPROVED BY:	SHEET CONTENTS: SHEET NO.:
	REPUBLIC OF THE PHILIPPINES PROVINCE OF PAMPANGA PROVINCIAL ENGINEER'S OFFICE CAPITOL COMPOUND, CITY OF SAN FERNANDO, (P)	CONSTRUCTION/COMPLETION OF MULTI-PURPOSE COVERED AREA	LUZ CLARITA G. MAGPAYO ENGINEER I PETER CRIS G. TAJA ENGINEER II	RUSSEL L. NERNANDEZ CONSTRUCTION DIVISION HEAD	WILFREDO A. MANALIT ASSISTANT PROVINCIAL ENGINEER	OLIMPIO M. PANGAN PROVINCIAL ENGINEER	HON. DENNIS G. PINEDA GOVERNOR BY THE AUTHORITY OF THE GOVERNOR ATTY. CHARIE G. CHUA PROVINCIAL ADMINISTRATOR	AS SHOWN

GENERAL NOTES:

1. ALL ELECTRICAL WORKS SHALL COMPLY IN ACCORDANCE WITH THESE PLANS AND SPECIFICATIONS. THE APPLICABLE PROVISIONS OF THE LATEST EDITION OF THE PHILIPPINE ELECTRICAL CODE (PEC). THE RULES AND REGULATIONS OF THE LOCAL ENFORCING AUTHORITY AND THE REQUIREMENTS OF THE LOCAL POWER COMPANY. THE ELECTRICAL WORKS SHALL BE UNDER IMMEDIATE SUPERVISION OF A DULY REGISTERED ELECTRICAL ENGINEER.
2. THE ELECTRICAL SERVICE POWER IS 1-PHASE, 2-WIRE + 1-GROUND, 230V AC, 60HZ.
3. WIRING METHOD SHALL BE AS FOLLOWS;
 - a. FEEDERS AND RISERS - INTERMEDIATE METALLIC CONDUIT
 - b. LIGHTING POWER RECEPTACLE - POLYVINYL CHLORIDE CONDUIT BRANCH CKT. & AUXILIARY, SCH. 40.
4. ALL WIRES SHALL BE COPPER AND THERMOPLASTIC INSULATED TYPE "THHN" UNLESS OTHERWISE INDICATED IN THE PLAN. THE MINIMUM SIZE OF WIRE FOR POWER AND LIGHTING CIRCUIT HOMERUN SHALL BE 3.5mm² AND INSULATED FOR 600 VOLTS. SMALLEST RACEWAY SHALL BE 15mmØ TRADE/NORMAL SIZE.
5. ALL OUTLET BOXES SHALL BE GALVANIZED GAGE NO. 16 DEEP TYPE WITH FACTORY KNOCKOUTS.
6. ALL MATERIALS TO BE USED SHALL BE BRAND NEW AND APPROVED TYPE FOR THE PARTICULAR LOCATION AND PURPOSE OF USAGE.
7. GROUNDING SYSTEM SHALL BE PROVIDED TO ALL LIGHTING AND POWER CIRCUIT AS PER PHILIPPINE ELECTRICAL CODE REQUIREMENT.
8. MOUNTING HEIGHT OF WIRING DEVICES SHALL BE AS FOLLOWS;
 - a. LIGHTING SWITCH - 1.20 m ABOVE FINISHED FLOOR
 - b. CONVENIENCE OUTLET - 0.30 m ABOVE FINISHED FLOOR
 - c. WALL FAN OUTLET - 1.80 m ABOVE FINISHED FLOOR
 - d. PANEL BOARD - 1.80 m ABOVE FINISHED FLOOR

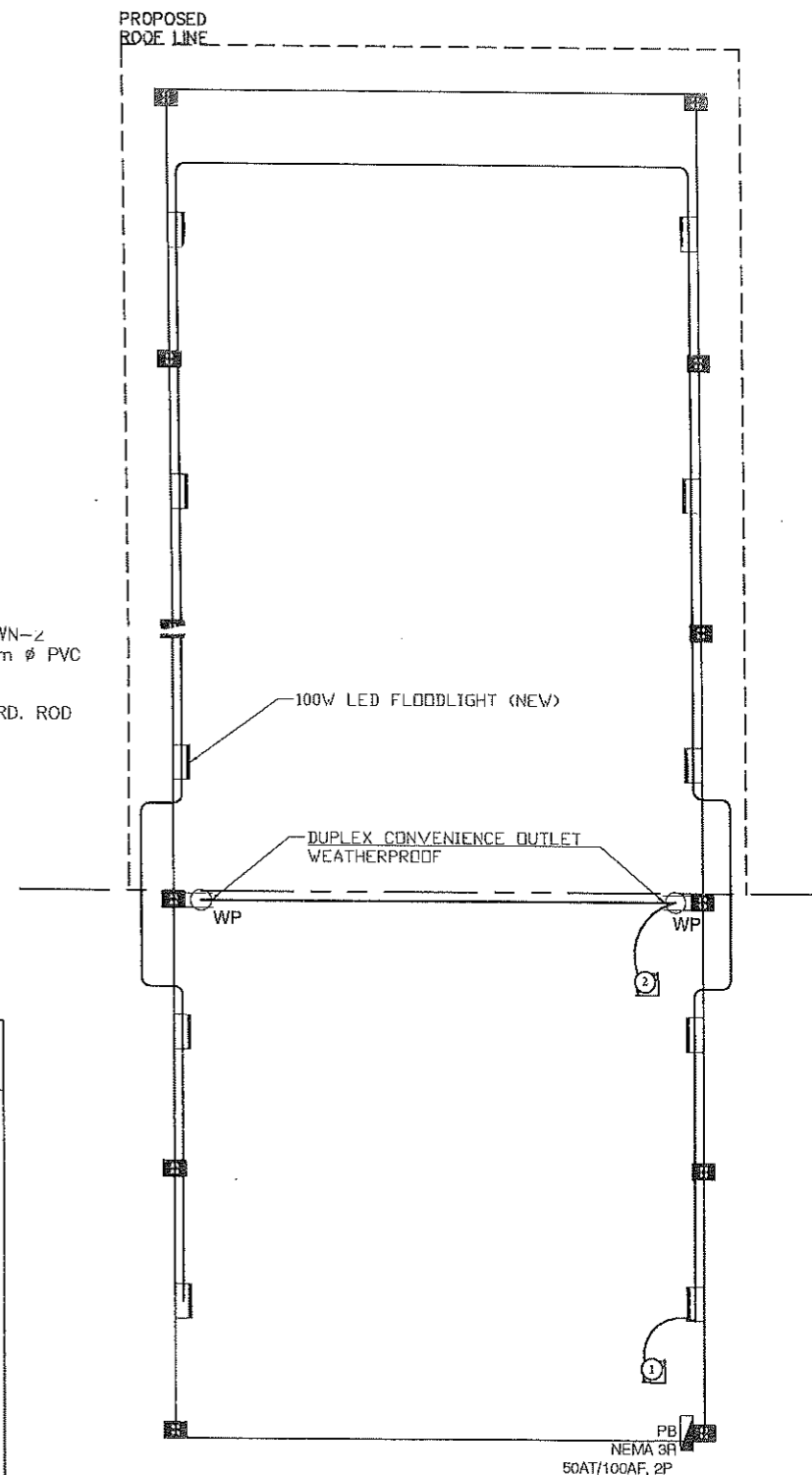
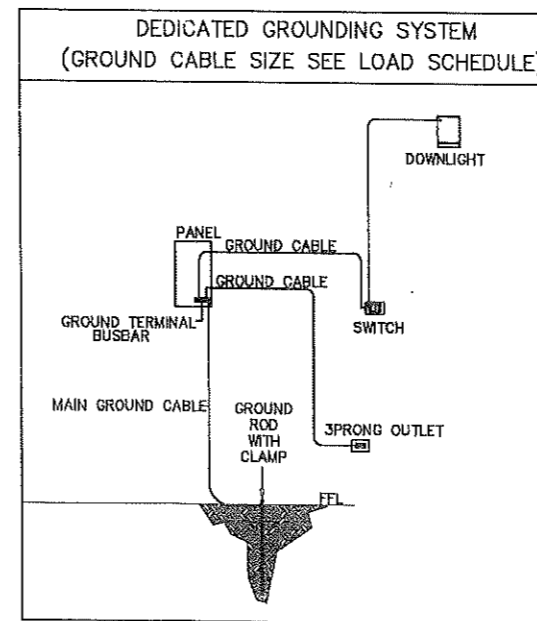
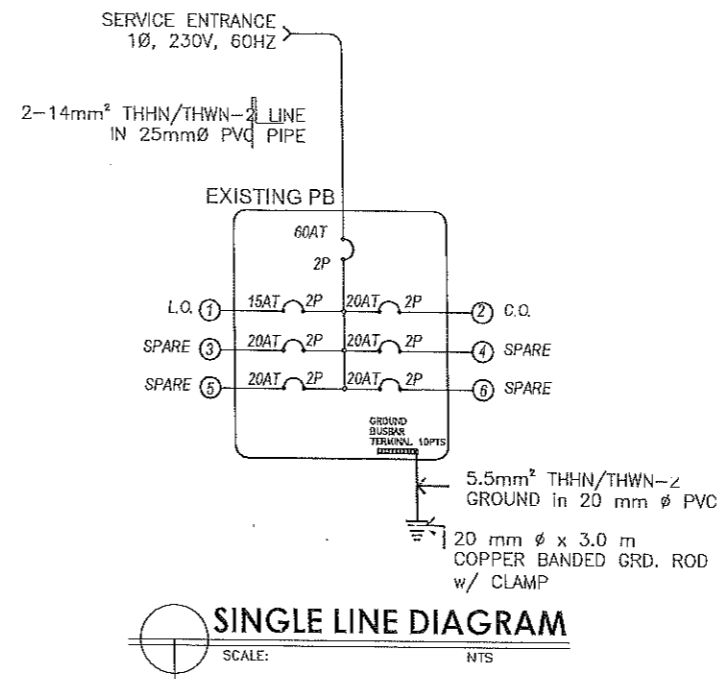
LEGEND:

	DUPLEX WEATHERPROOF CONVENIENCE OUTLET
	PANELBOARD
	HOME RUN
	100W LED FLOODLIGHT

LOAD CALCULATION

CKT. NO.	DESCRIPTION	CONNECTED LOAD						OVER CURRENT PROTECTION				SIZE OF WIRE AND PVC CONDUITS
		V	VA	A	AT	AF	P	KA	KA	KA	KA	
1	10-1 x 100W LED FLOODLIGHT	230	1000	4.35	15	50	2	10	2-3.5mm ² THHN/THWN-2 LINE + 2.0mm ² THHN/THWN-2 GROUND IN 20 mm DIA. PVC CONDUIT or 15mm dia. EMT Conduit			
2	2-1 x 180W DUPLEX CONVENIENCE OUTLET (WEATHERPROOF)	230	360	1.57	20	50	2	10	2-3.5mm ² THHN/THWN-2 LINE + 2.0mm ² THHN/THWN-2 GROUND IN 20 mm DIA. PVC CONDUIT or 15mm dia. EMT Conduit			
3	SPARE	230	1500	6.52	20	50	2	10	20mmØ PVC CONDUIT STUB-OUT			
4	SPARE	230	1500	6.52	20	50	2	10	20mmØ PVC CONDUIT STUB-OUT			
5	SPARE	230	1500	6.52	20	50	2	10	20mmØ PVC CONDUIT STUB-OUT			
6	SPARE	230	1500	6.52	20	50	2	10	20mmØ PVC CONDUIT STUB-OUT			
TOTAL CONNECTED LOAD :			7360	32.00								

FEEDER LINE COMPUTATION: I = 32 100% DF I = 32 Amps	MAIN CIRCUIT BREAKER COMPUTATION: I = 32 100% DF I = 32 Amps	USE: 60AT/100AF, 2P, MCCB 2-14mm ² THHN/THWN-2 (L) + 5.5mm ² THHN/THWN-2 (G) IN 25 mmØ PVC CONDUIT OR IN 20mmØ RSC CONDUIT
--	---	--



	FROM THE OFFICE OF:	PROJECT TITLE:	PREPARED BY:	CHECKED BY:	VERIFIED & SUBMITTED BY:	RECOMMENDING APPROVAL:	APPROVED BY:	SHEET CONTENTS:	SHEET NO.:
	REPUBLIC OF THE PHILIPPINES PROVINCE OF PAMPANGA PROVINCIAL ENGINEER'S OFFICE CAPITOL COMPOUND, CITY OF SAN FERNANDO, (P)	CONSTRUCTION/COMPLETION OF MULTI-PURPOSE COVERED AREA LOCATION: BANCAL SINUBLI, LUBAO, PAMPANGA	PETER CRIS DELA FLORA ENGINEER II MICHAEL T. MONTEMAYOR ENGINEER III	RUSSEL L. HERNANDEZ CONSTRUCTION DIVISION HEAD	WILFREDO A. MANAHI ASSISTANT PROVINCIAL ENGINEER	OLIMPIO M. PANGAN PROVINCIAL ENGINEER	HON. DENNIS G. PINEDA GOVERNOR BY THE AUTHORITY OF THE GOVERNOR ATTY. CHARLIE G. CHUA PROVINCIAL ADMINISTRATOR	AS SHOWN	7/7