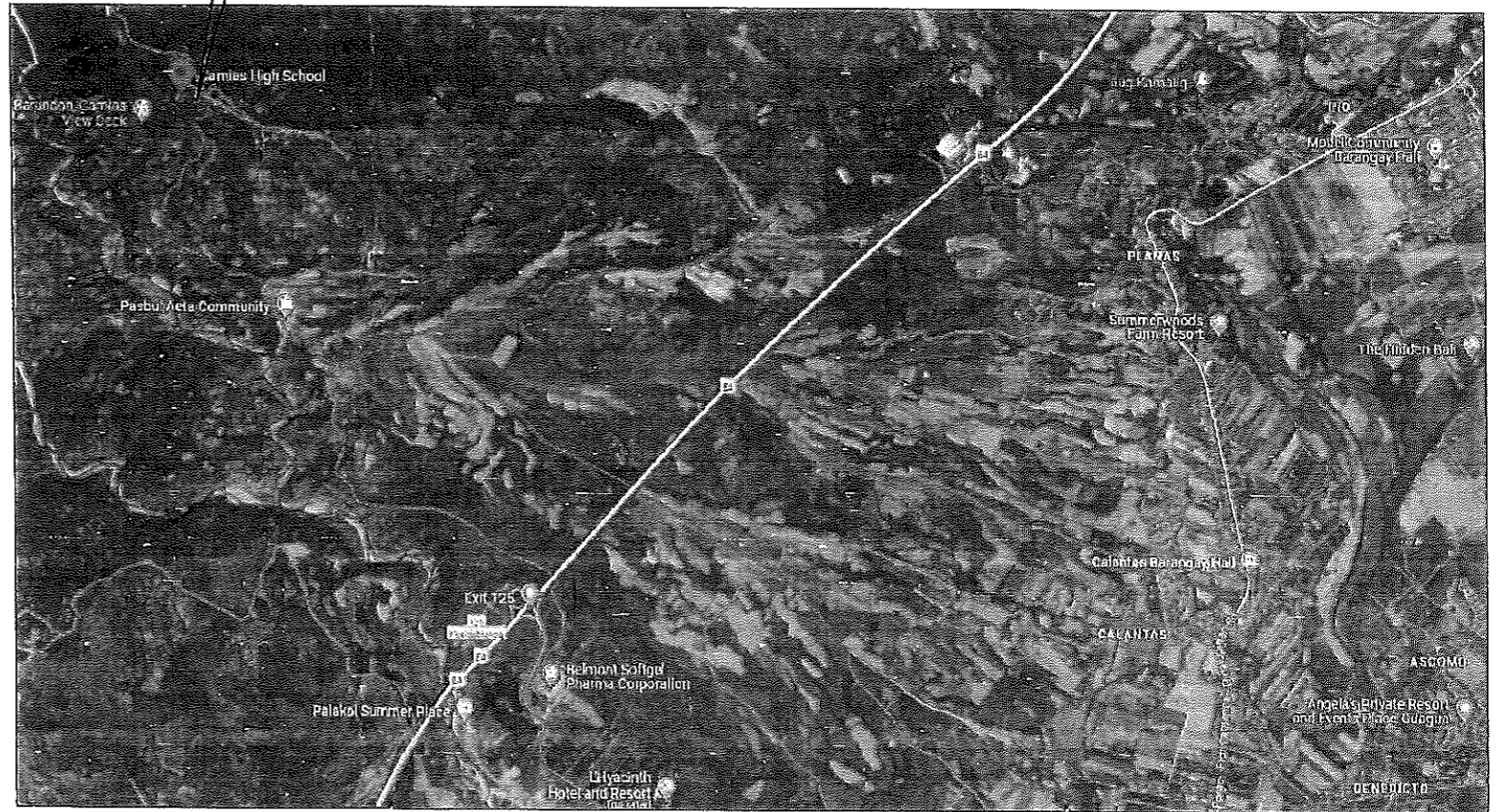
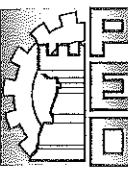


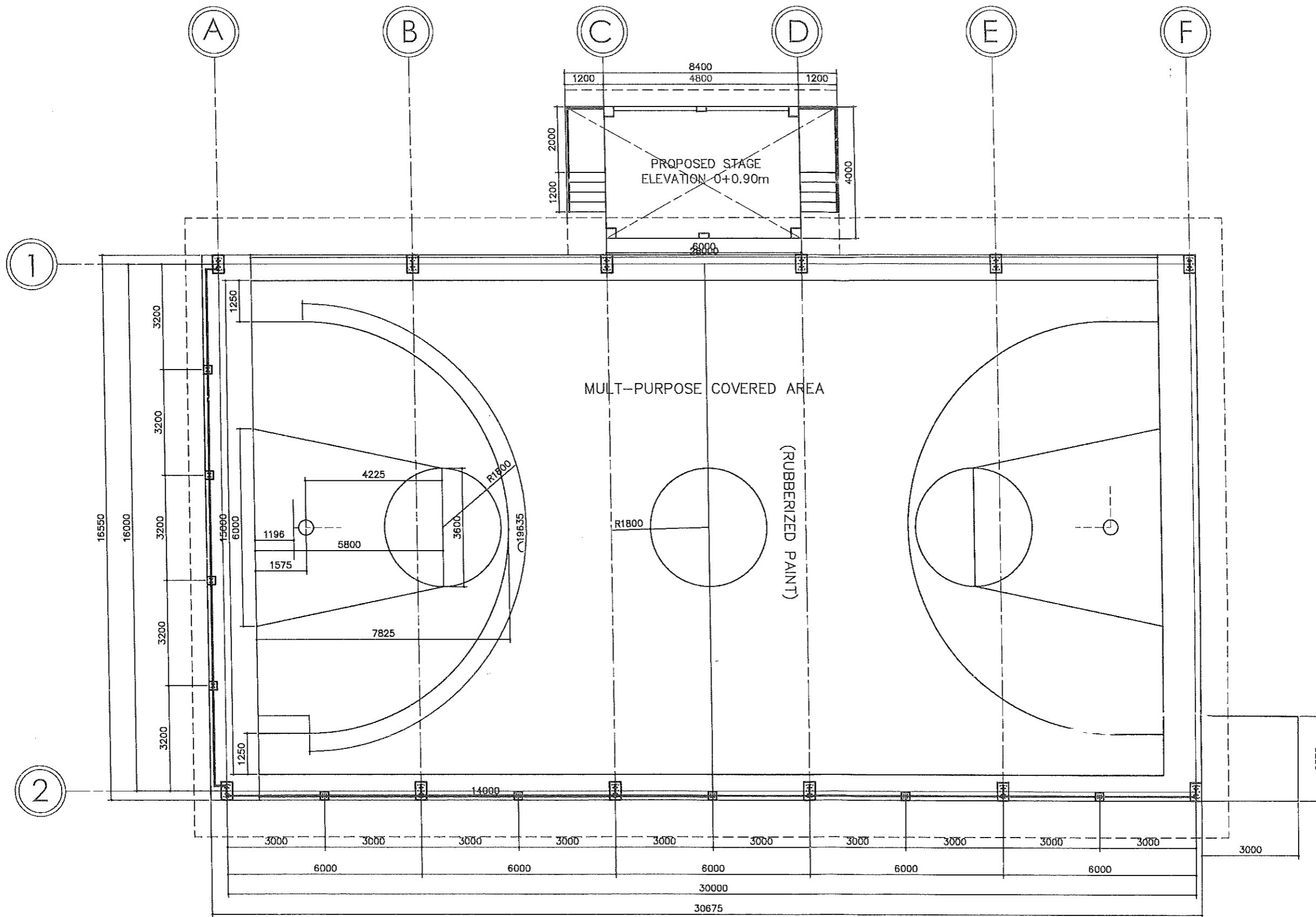
PERSPECTIVE

SITE

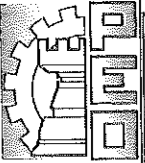


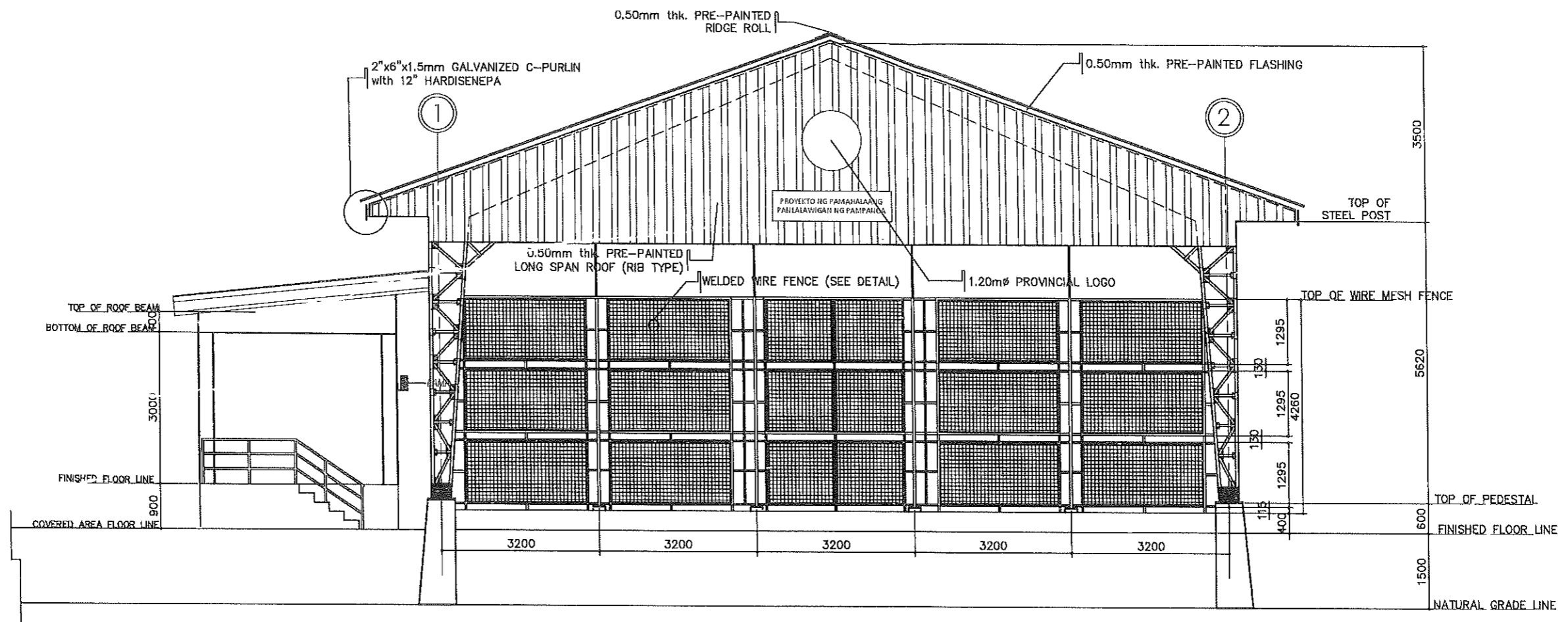
VICINITY MAP

FROM THE OFFICE OF:	PROJECT TITLE:	PREPARED BY:	CHECKED BY:	VERIFIED & SUBMITTED BY:	RECOMMENDING APPROVAL:	APPROVED BY:	SHEET CONTENTS:	SHEET NO.:
 <p>REPUBLIC OF THE PHILIPPINES PROVINCE OF PAMPANGA PROVINCIAL ENGINEER'S OFFICE CAPITOL COMPOUND, CITY OF SAN FERNANDO, (P)</p>	<p>CONSTRUCTION OF MULTI-PURPOSE COVERED AREA WITH REINFORCED CONCRETE SLAB</p> <p>LOCATION: CAMIAS, PORAC, PAMPANGA</p>	<p><i>[Signature]</i> MARK JOSEPH S. BELTRAN ENGINEER I</p>	<p><i>[Signature]</i> BRYAN G. ALVARADO ENGINEER IV MAINTENANCE DIVISION HEAD</p>	<p><i>[Signature]</i> WILFREDO A. MANALILI ASST. PROVINCIAL ENGINEER</p>	<p><i>[Signature]</i> OLIMPIO M. PANGAN PROVINCIAL ENGINEER</p>	<p>HON. DENNIS G. PINEDA GOVERNOR BY THE AUTHORITY OF THE GOVERNOR <i>[Signature]</i> ATTY. CHARLIE G. CHUA PROVINCIAL ADMINISTRATOR</p>	AS SHOWN	i/15

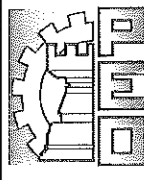
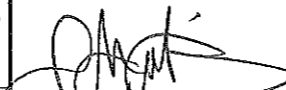
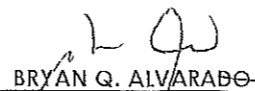
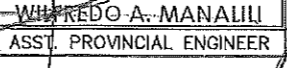
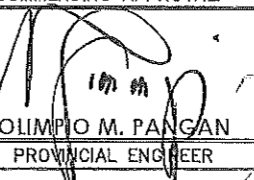



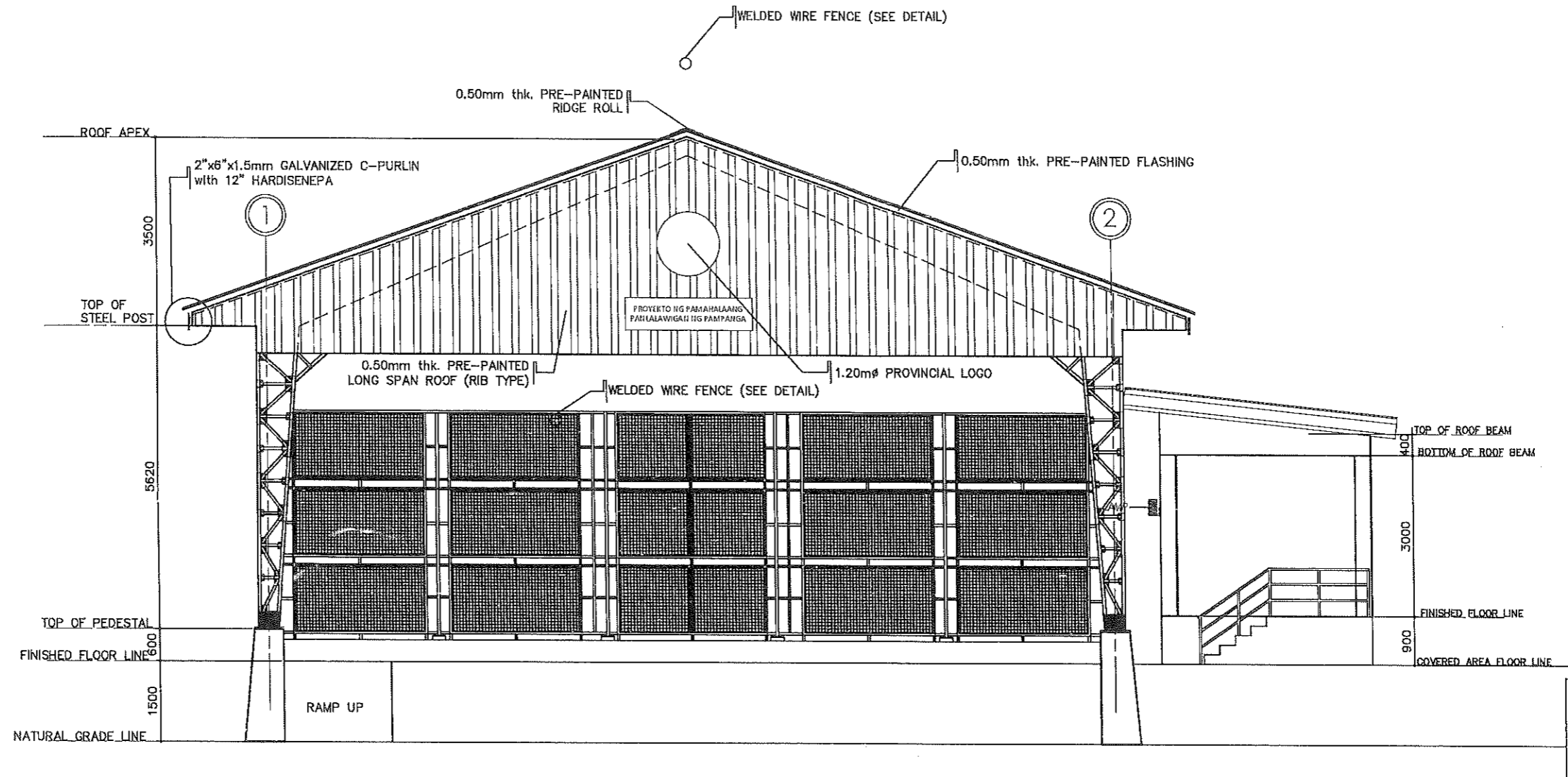
FLOOR PLAN
SCALE 1 : 125 MTS.

	FROM THE OFFICE OF:	PROJECT TITLE:	PREPARED BY:	CHECKED BY:	VERIFIED & SUBMITTED BY:	RECOMMENDING APPROVAL:	APPROVED BY:	SHEET CONTENTS:	SHEET NO.:
	REPUBLIC OF THE PHILIPPINES PROVINCE OF PAMPANGA PROVINCIAL ENGINEER'S OFFICE CAPITOL COMPOUND, CITY OF SAN FERNANDO, (P)	CONSTRUCTION OF MULTI-PURPOSE COVERED AREA WITH REINFORCED CONCRETE SLAB LOCATION: CAMIAS, PORAC, PAMPANGA	MARK JOSEPH S. BELTRAN ENGINEER I	BRYAN Q. ALVARADO ENGINEER IV MAINTENANCE DIVISION HEAD	WILFREDO A. MANALILI ASST. PROVINCIAL ENGINEER	OLIMPIO M. PANGAN PROVINCIAL ENGINEER	HON. DENNIS G. PINEDA GOVERNOR BY THE AUTHORITY OF THE GOVERNOR: ATTY. CHARIE G. CHUA PROVINCIAL ADMINISTRATOR	AS SHOWN	2/15

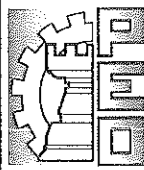
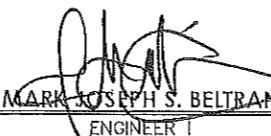
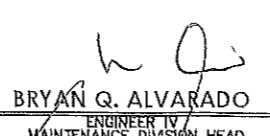
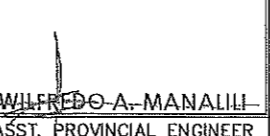
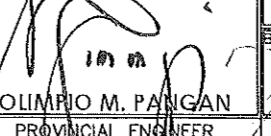
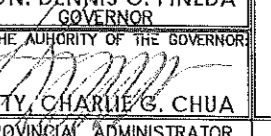


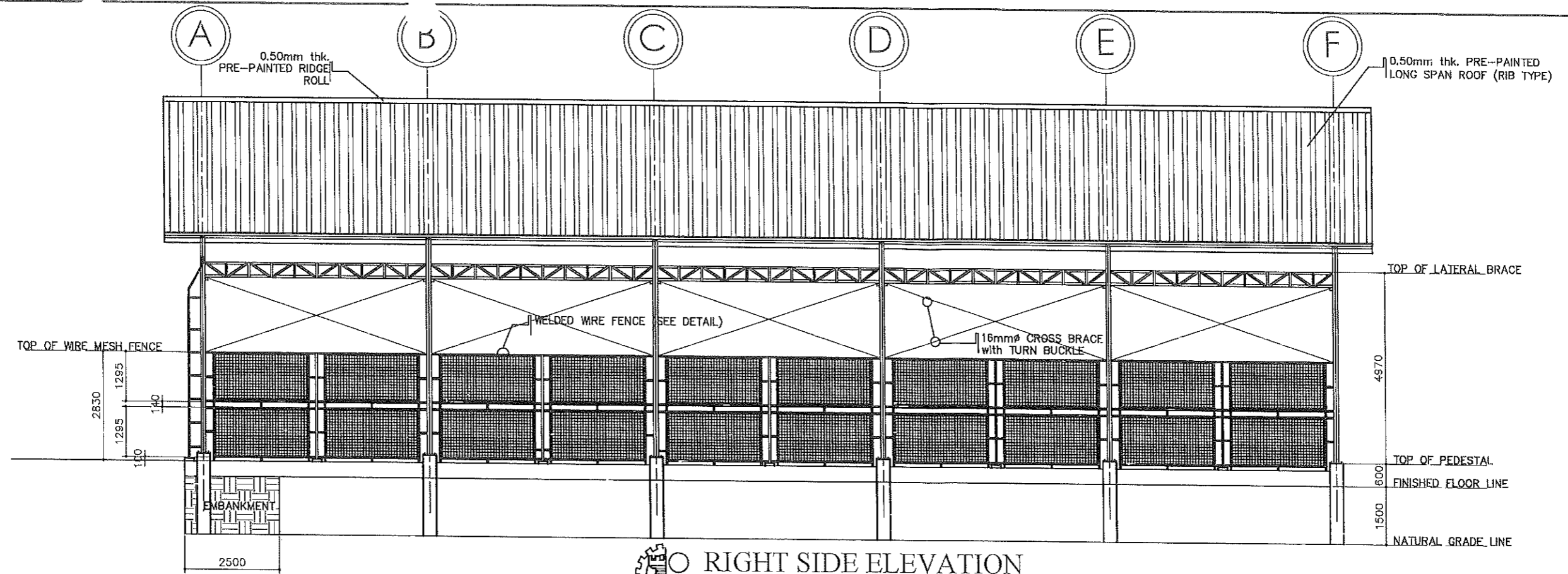

FRONT ELEVATION
 SCALE 1 : 100 MTS.

	FROM THE OFFICE OF:	PROJECT TITLE:	PREPARED BY:	CHECKED BY:	VERIFIED & SUBMITTED BY:	RECOMMENDING APPROVAL:	APPROVED BY:	SHEET CONTENTS:	SHEET NO.:
	REPUBLIC OF THE PHILIPPINES PROVINCE OF PAMPANGA PROVINCIAL ENGINEER'S OFFICE CAPITOL COMPOUND, CITY OF SAN FERNANDO, (P)	CONSTRUCTION OF MULTI-PURPOSE COVERED AREA WITH REINFORCED CONCRETE SLAB LOCATION: CAMIAS, PORAC, PAMPANGA	 MARK JOSEPH S. BELTRAN ENGINEER I	 BRYAN G. ALVARADO ENGINEER IV MAINTENANCE DIVISION HEAD	 WILFREDO A. MANALILI ASST. PROVINCIAL ENGINEER	 OLIMPIO M. PANGAN PROVINCIAL ENGINEER	HON. DENNIS G. PINEDA GOVERNOR BY THE AUTHORITY OF THE GOVERNOR:  ATTY. CHARLIE G. CHUA PROVINCIAL ADMINISTRATOR	AS SHOWN	3

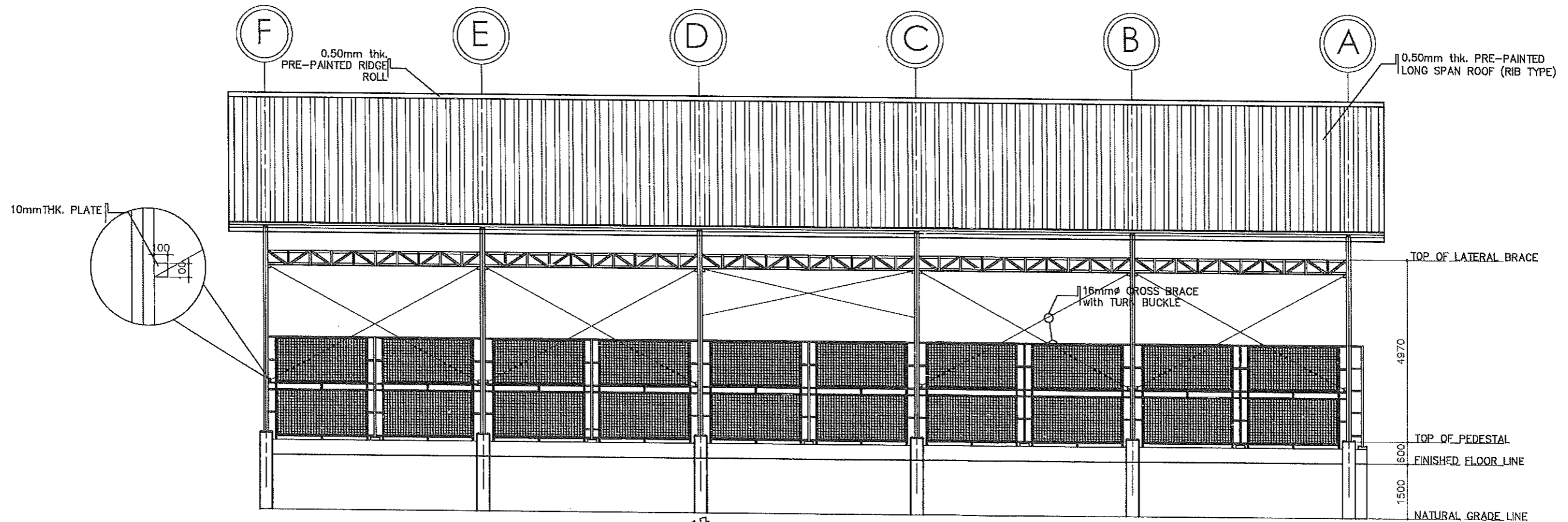



REAR ELEVATION
 SCALE 1 : 100 MTS.

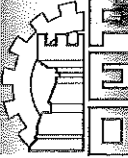
	FROM THE OFFICE OF: REPUBLIC OF THE PHILIPPINES PROVINCE OF PAMPANGA PROVINCIAL ENGINEER'S OFFICE CAPITOL COMPOUND, CITY OF SAN FERNANDO, (P)	PROJECT TITLE: CONSTRUCTION OF MULTI-PURPOSE COVERED AREA WITH REINFORCED CONCRETE SLAB LOCATION: CAMIAS, PORAC, PAMPANGA	PREPARED BY:  MARK JOSEPH S. BELTRAN ENGINEER I	CHECKED BY:  BRYAN G. ALVARADO ENGINEER IV MAINTENANCE DIVISION HEAD	VERIFIED & SUBMITTED BY:  WILFREDO A. MANALILI ASST. PROVINCIAL ENGINEER	RECOMMENDING APPROVAL:  OLIMPIO M. PANGAN PROVINCIAL ENGINEER	APPROVED BY: HON. DENNIS G. PINEDA GOVERNOR BY THE AUTHORITY OF THE GOVERNOR:  ATTY. CHARLIE G. CHUA PROVINCIAL ADMINISTRATOR	SHEET CONTENTS: AS SHOWN	SHEET NO.: 4/15
---	--	---	--	--	---	--	---	--------------------------	-----------------

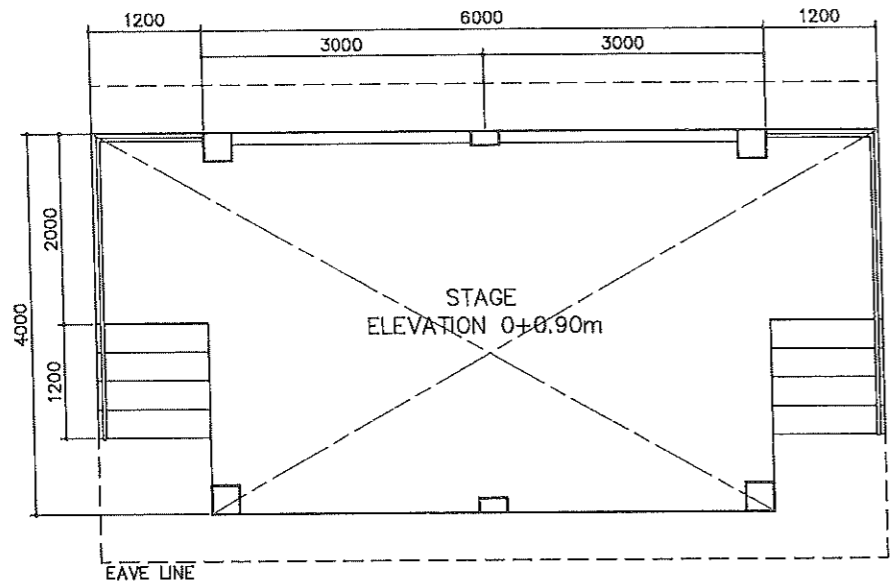


RIGHT SIDE ELEVATION
SCALE 1 : 125 MTS.

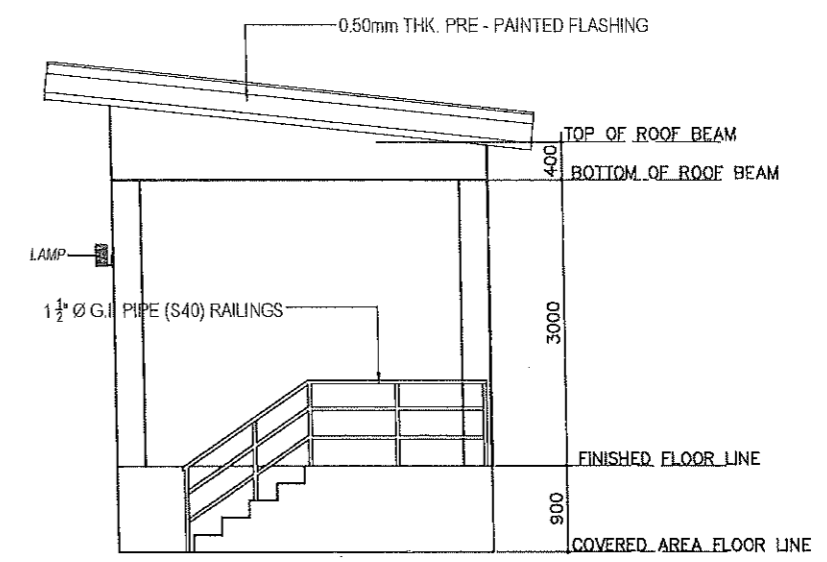


LEFT SIDE ELEVATION
SCALE 1 : 125 MTS.

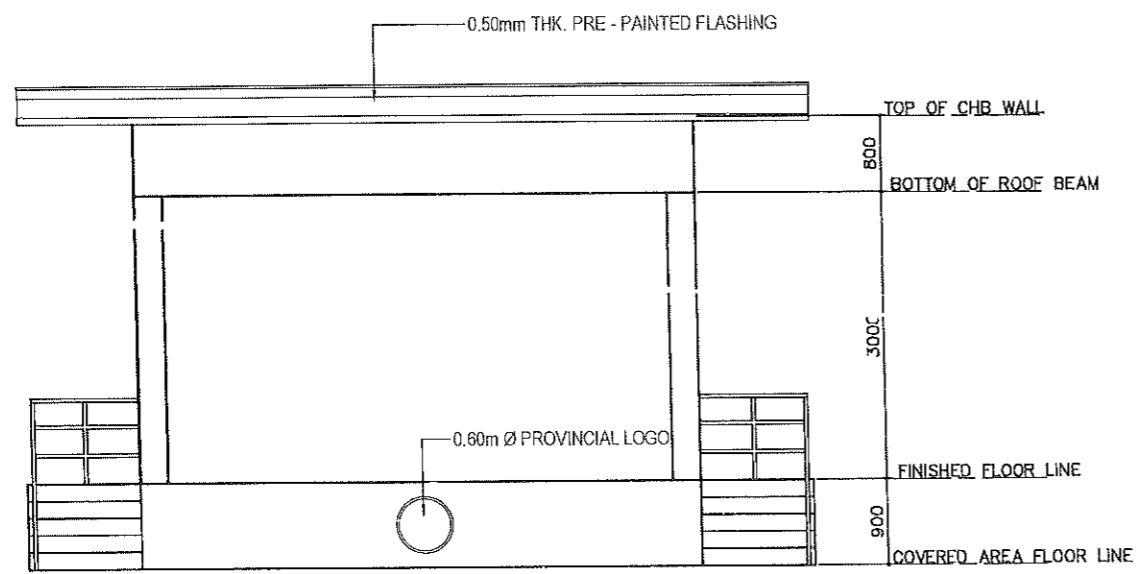
	FROM THE OFFICE OF:	PROJECT TITLE:	PREPARED BY:	CHECKED BY:	VERIFIED & SUBMITTED BY:	RECOMMENDING APPROVAL:	APPROVED BY:	SHEET CONTENTS:	SHEET NO.:
	REPUBLIC OF THE PHILIPPINES PROVINCE OF PAMPANGA PROVINCIAL ENGINEER'S OFFICE CAPITOL COMPOUND, CITY OF SAN FERNANDO, (P)	CONSTRUCTION OF MULTI-PURPOSE COVERED AREA WITH REINFORCED CONCRETE SLAB LOCATION: CAMIAS, PORAC, PAMPANGA	MARK JOSEPH S. BELTRAN ENGINEER-1	BRYAN Q. ALVARADO ENGINEER IV MAINTENANCE DIVISION HEAD	WILFREDO A. MANALILI ASST. PROVINCIAL ENGINEER	OLIMPIO M. PANGAN PROVINCIAL ENGINEER	HON. DENNIS G. PINEDA GOVERNOR BY THE AUTHORITY OF THE GOVERNOR: ATTY. CHARLIE G. CHUA PROVINCIAL ADMINISTRATOR	AS SHOWN	5/15



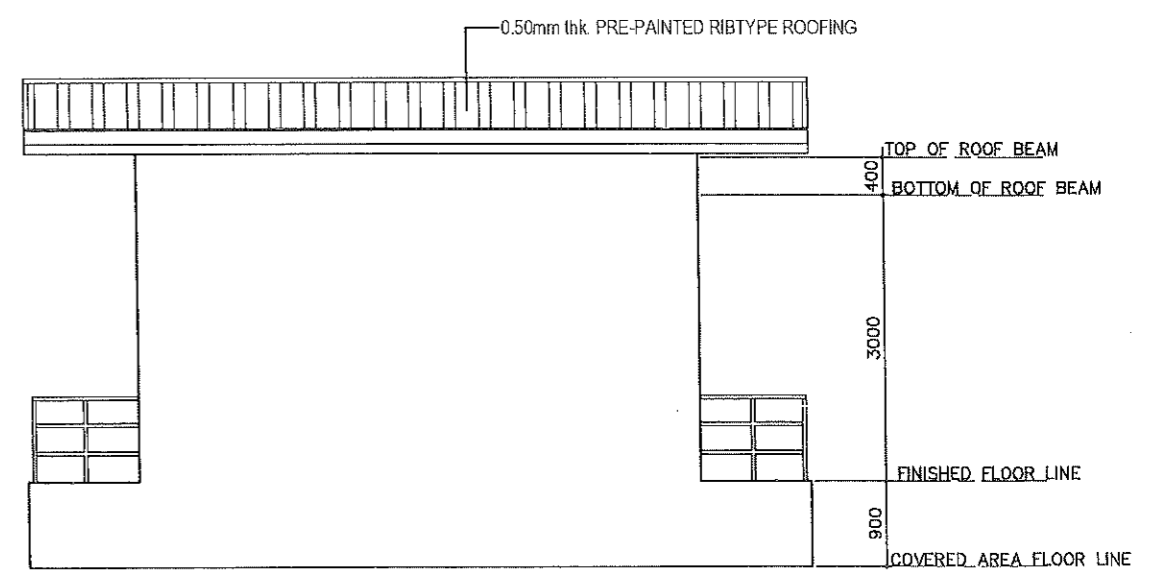
FLOOR PLAN
SCALE 1 : 80 MTS.



TYPICAL SIDE ELEVATION
SCALE 1 : 80 MTS.

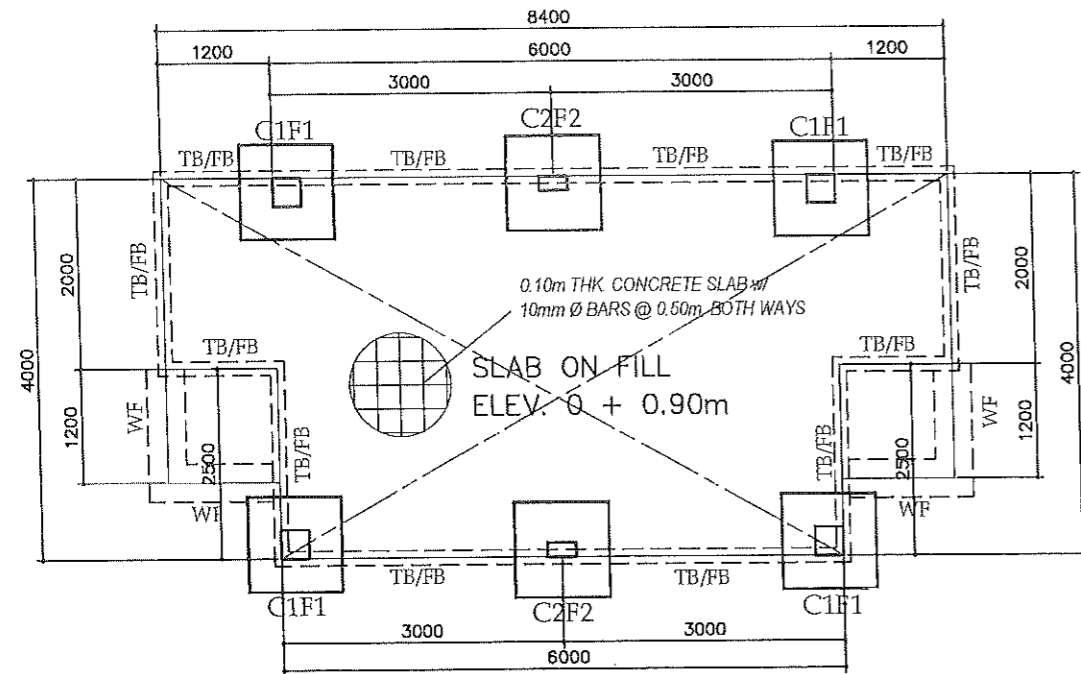


FRONT ELEVATION
SCALE 1 : 80 MTS.

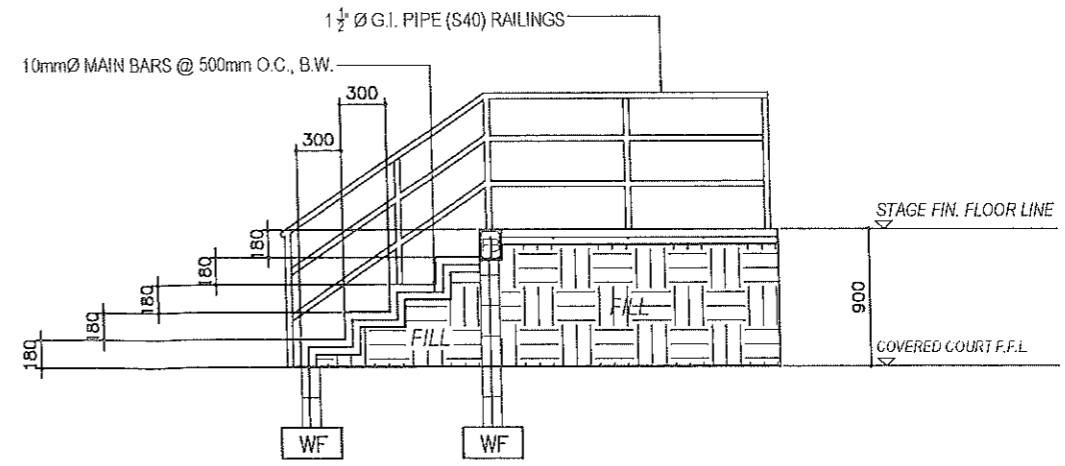


REAR ELEVATION
SCALE 1 : 80 MTS.

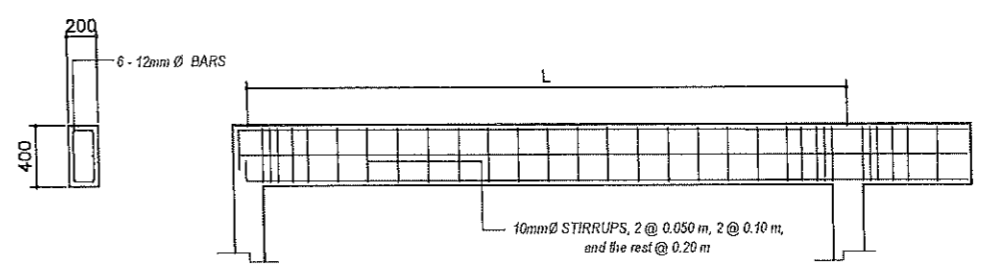
	FROM THE OFFICE OF:	PROJECT TITLE:	PREPARED BY:	CHECKED BY:	VERIFIED & SUBMITTED BY:	RECOMMENDING APPROVAL:	APPROVED BY:	SHEET CONTENTS:	SHEET NO.:
	REPUBLIC OF THE PHILIPPINES PROVINCE OF PAMPANGA PROVINCIAL ENGINEER'S OFFICE CAPITOL COMPOUND, CITY OF SAN FERNANDO, (P)	CONSTRUCTION OF MULTI-PURPOSE COVERED AREA WITH REINFORCED CONCRETE SLAB LOCATION: CAMIAS, PORAC, PAMPANGA	 MARK JOSEPH S. BELTRAN ENGINEER I	 BRYAN Q. ALVARADO ENGINEER IV MAINTENANCE DIVISION HEAD	 WILFREDO A. MANALILI ASST. PROVINCIAL ENGINEER	 OLIMPIO M. PANGAN PROVINCIAL ENGINEER	HON. DENNIS G. PINEDA GOVERNOR BY THE AUTHORITY OF THE GOVERNOR: ATTY. CHARLIE G. CHUA PROVINCIAL ADMINISTRATOR	AS SHOWN	6/15



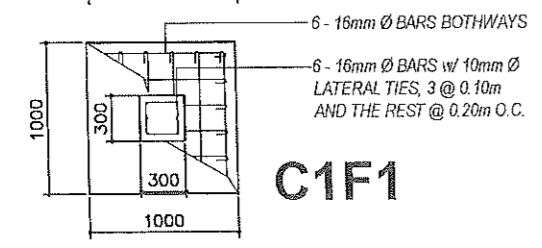
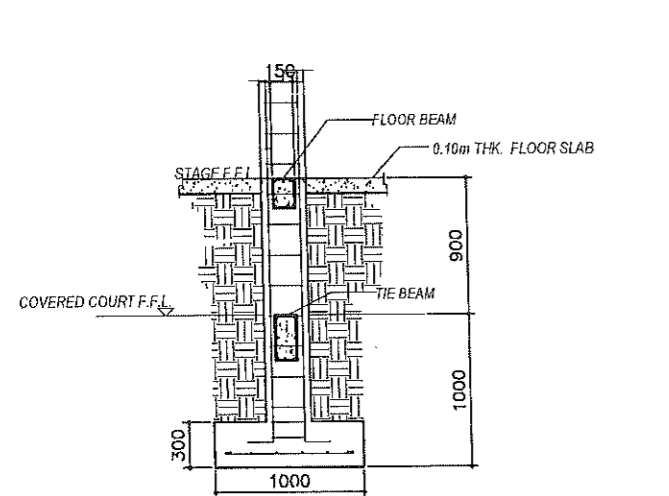
FOUNDATION PLAN
SCALE 1 : 100 MTS.



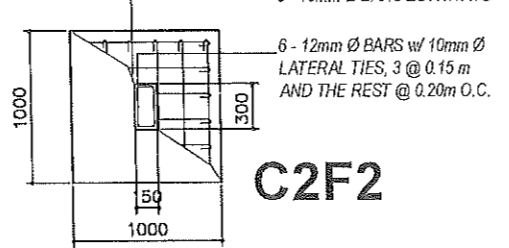
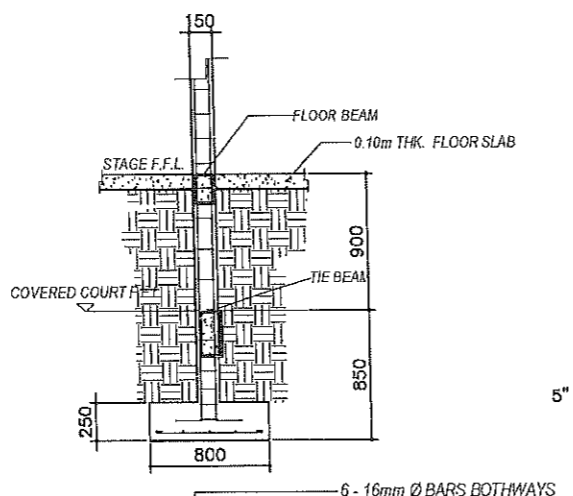
DETAIL OF STAIRS (STAGE)
SCALE 1 : 50 MTS.



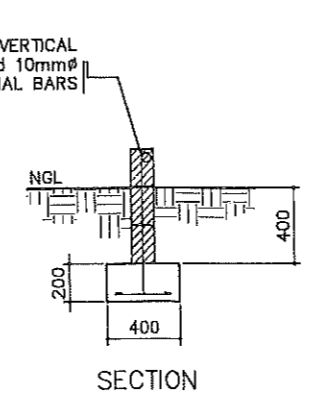
TYP. DETAIL OF ROOF BEAM
SCALE 1 : 50 MTS.



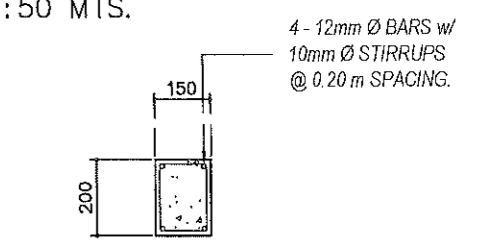
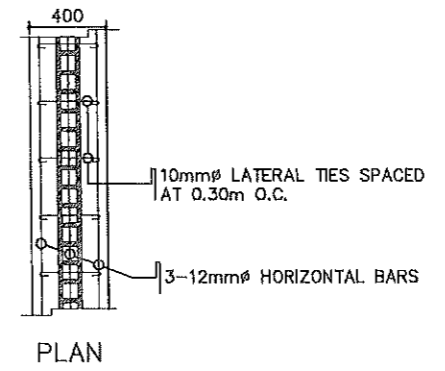
DETAIL OF COLUMN & FOOTING
SCALE 1 : 50 MTS.



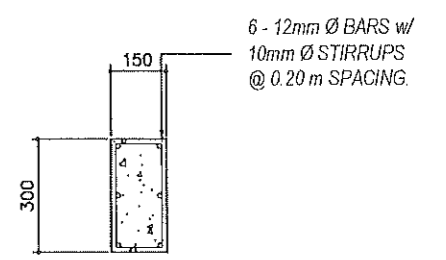
5" CHB WALL with 10mm Ø VERTICAL BARS @ 0.80m and 10mm Ø HORIZONTAL BARS



WALL FOOTING DETAIL
SCALE 1 : 40 MTS.

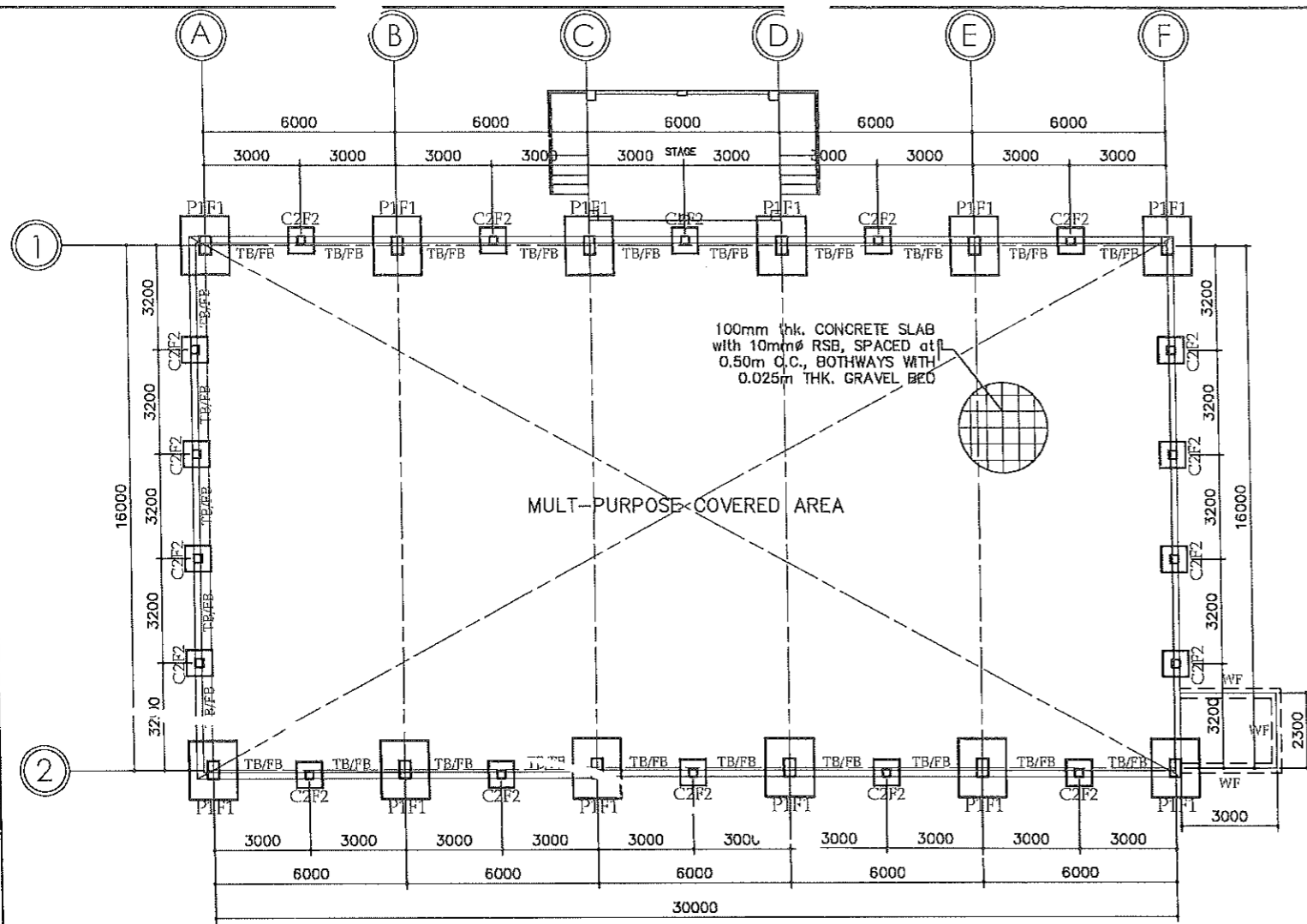


FLOOR BEAM (FB)
SCALE

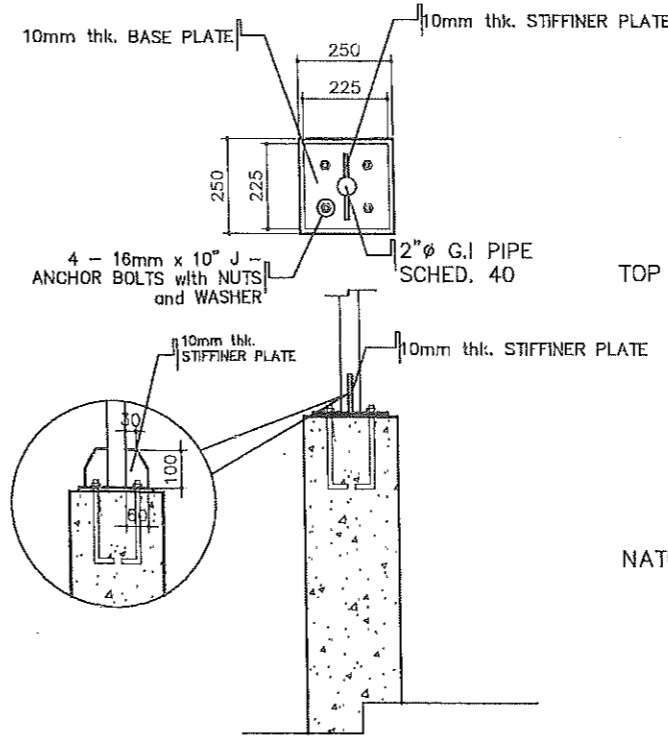


TIE BEAM (TB)
SCALE 1 : 20 MTS.

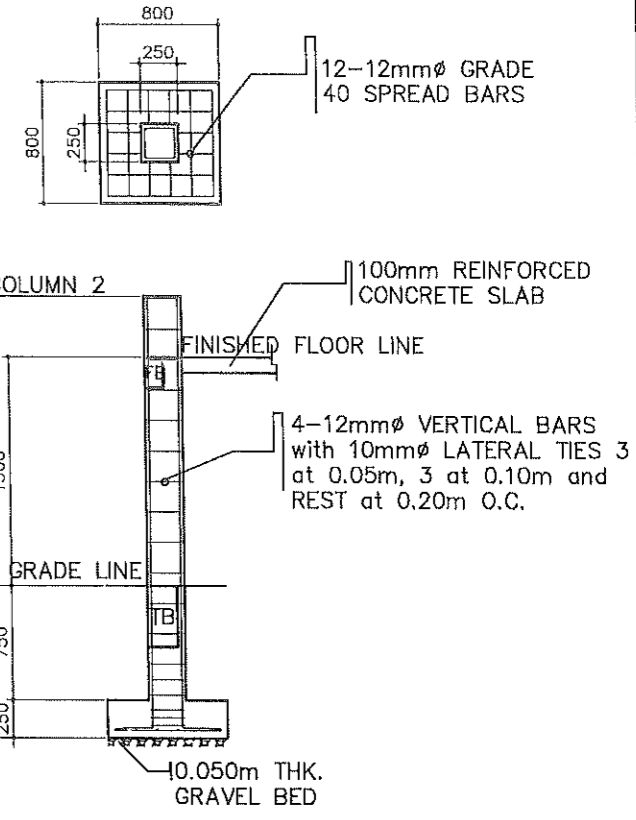
FROM THE OFFICE OF:	PROJECT TITLE:	PREPARED BY:	CHECKED BY:	VERIFIED & SUBMITTED BY:	RECOMMENDING APPROVAL:	APPROVED BY:	SHEET CONTENTS:	SHEET NO.:
REPUBLIC OF THE PHILIPPINES PROVINCE OF PAMPANGA PROVINCIAL ENGINEER'S OFFICE CAPITOL COMPOUND, CITY OF SAN FERNANDO, (P)	CONSTRUCTION OF MULTI-PURPOSE COVERED AREA WITH REINFORCED CONCRETE SLAB LOCATION: CAMIAS, PORAC, PAMPANGA	MARK JOSEPH S. BELTRAN ENGINEER 1	BRYAN Q. ALVARADO ENGINEER IV MAINTENANCE DIVISION HEAD	WILFREDO A. MANALIIL ASST. PROVINCIAL ENGINEER	OLIMPIO M. PANGAN PROVINCIAL ENGINEER	HON. BENNIS G. PINEDA GOVERNOR BY THE AUTHORITY OF THE GOVERNOR: ATTY. CHARLIE G. CHUA PROVINCIAL ADMINISTRATOR	AS SHOWN	7/15



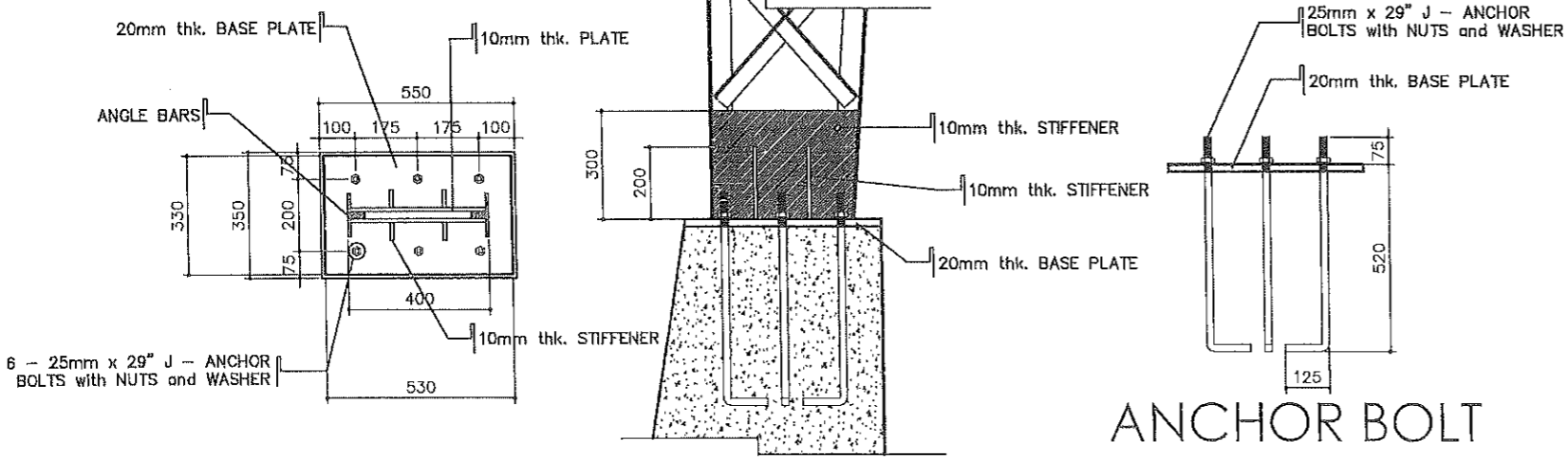
FOUNDATION PLAN
SCALE 1 : 200 MTS.



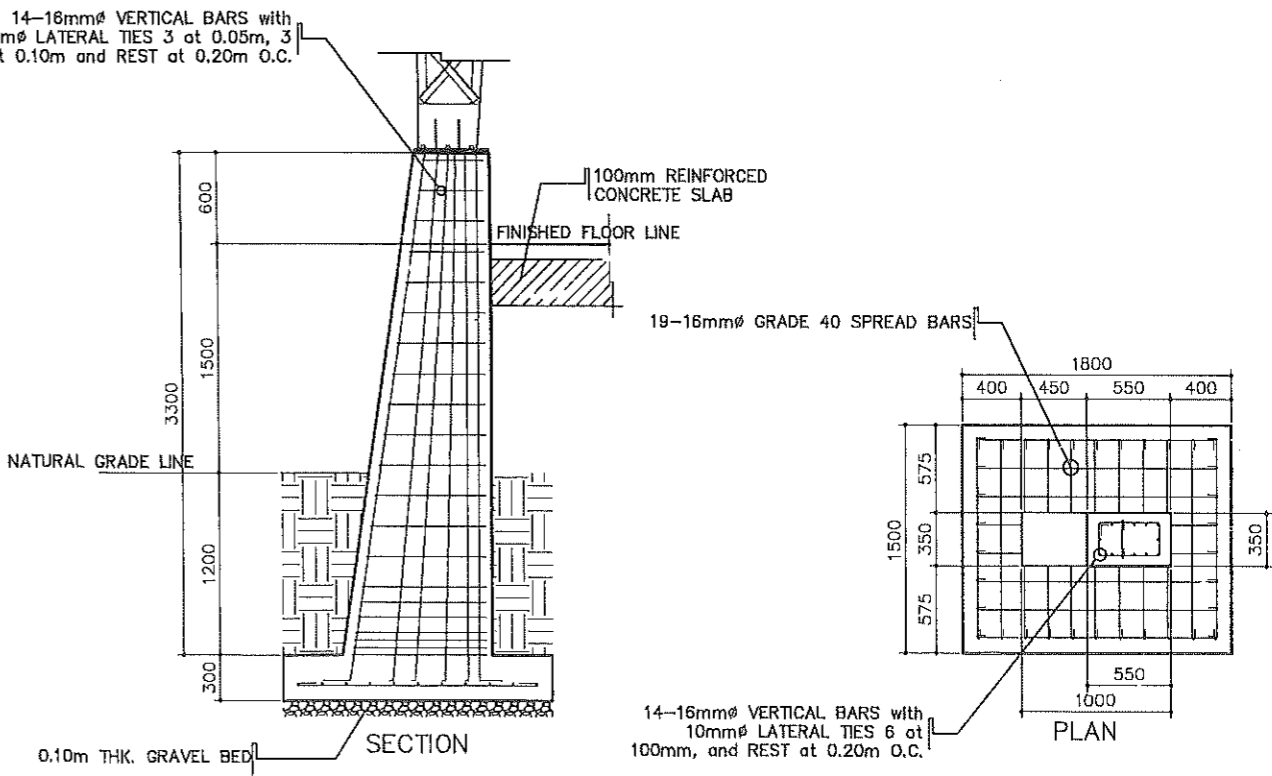
DETAIL CONNECTION OF BASE PLATE
SCALE 1 : 20 MTS.



DETAIL OF C2F2
SCALE 1 : 50 MTS.

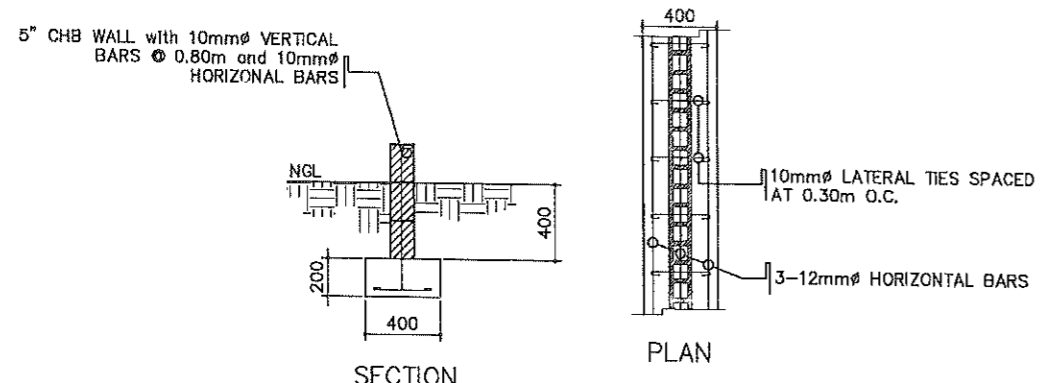


DETAIL CONNECTION OF BASE PLATE
SCALE 1 : 20 MTS.

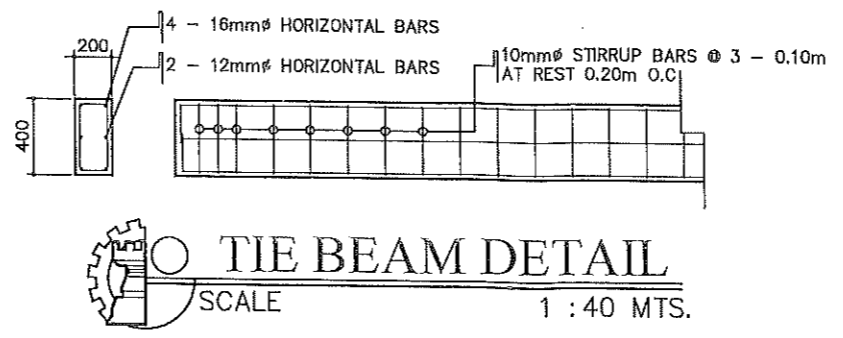


DETAIL OF P1F1
SCALE 1 : 50 MTS.

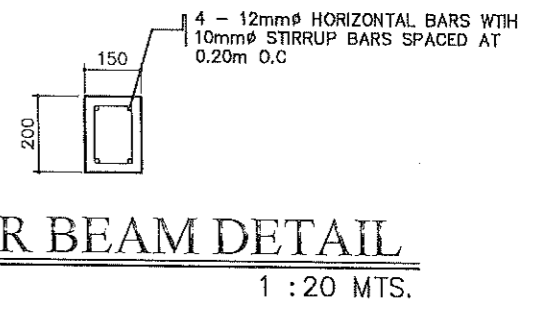
FROM THE OFFICE OF:	PROJECT TITLE:	PREPARED BY:	CHECKED BY:	VERIFIED & SUBMITTED BY:	RECOMMENDING APPROVAL:	APPROVED BY:	SHEET CONTENTS:	SHEET NO.:
REPUBLIC OF THE PHILIPPINES PROVINCE OF PAMPANGA PROVINCIAL ENGINEER'S OFFICE CAPITOL COMPOUND, CITY OF SAN FERNANDO, (P)	CONSTRUCTION OF MULTI-PURPOSE COVERED AREA WITH REINFORCED CONCRETE SLAB LOCATION: CAMIAS, PORAC, PAMPANGA	MARK JOSEPH S. BELTRAN ENGINEER I	BRYAN Q. ALVARADO ENGINEER IV MAINTENANCE DIVISION HEAD	WILFREDO A. MANAHLI ASST. PROVINCIAL ENGINEER	OLIMPIO M. PANGAN PROVINCIAL ENGINEER	HON. DENNIS G. PINEDA GOVERNOR BY THE AUTHORITY OF THE GOVERNOR: ATTY. CHARLIE G. CHUA PROVINCIAL ADMINISTRATOR	AS SHOWN	8/15



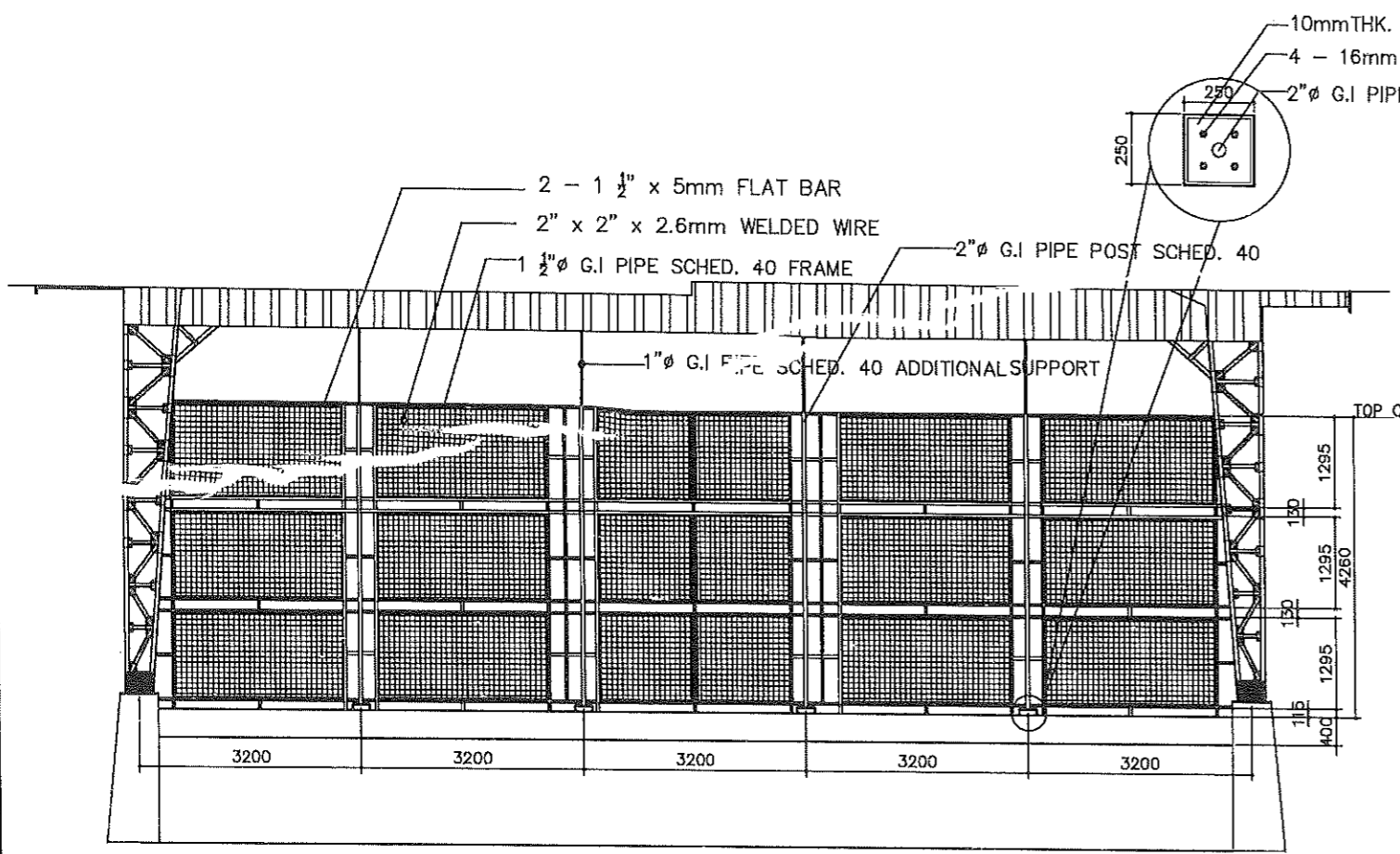
WALL FOOTING DETAIL
SCALE 1 : 40 MTS.



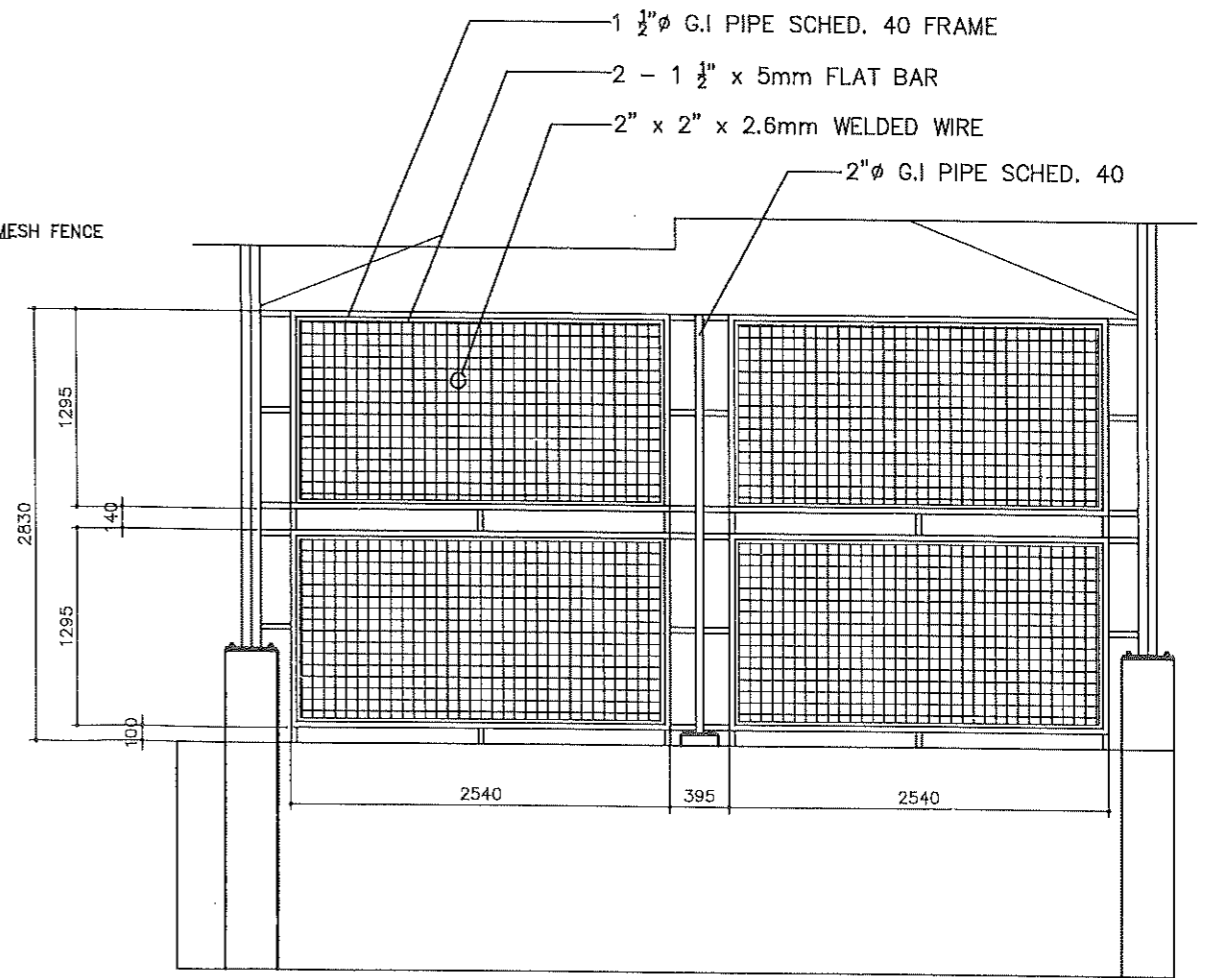
TIE BEAM DETAIL
SCALE 1 : 40 MTS.



FLOOR BEAM DETAIL
SCALE 1 : 20 MTS.

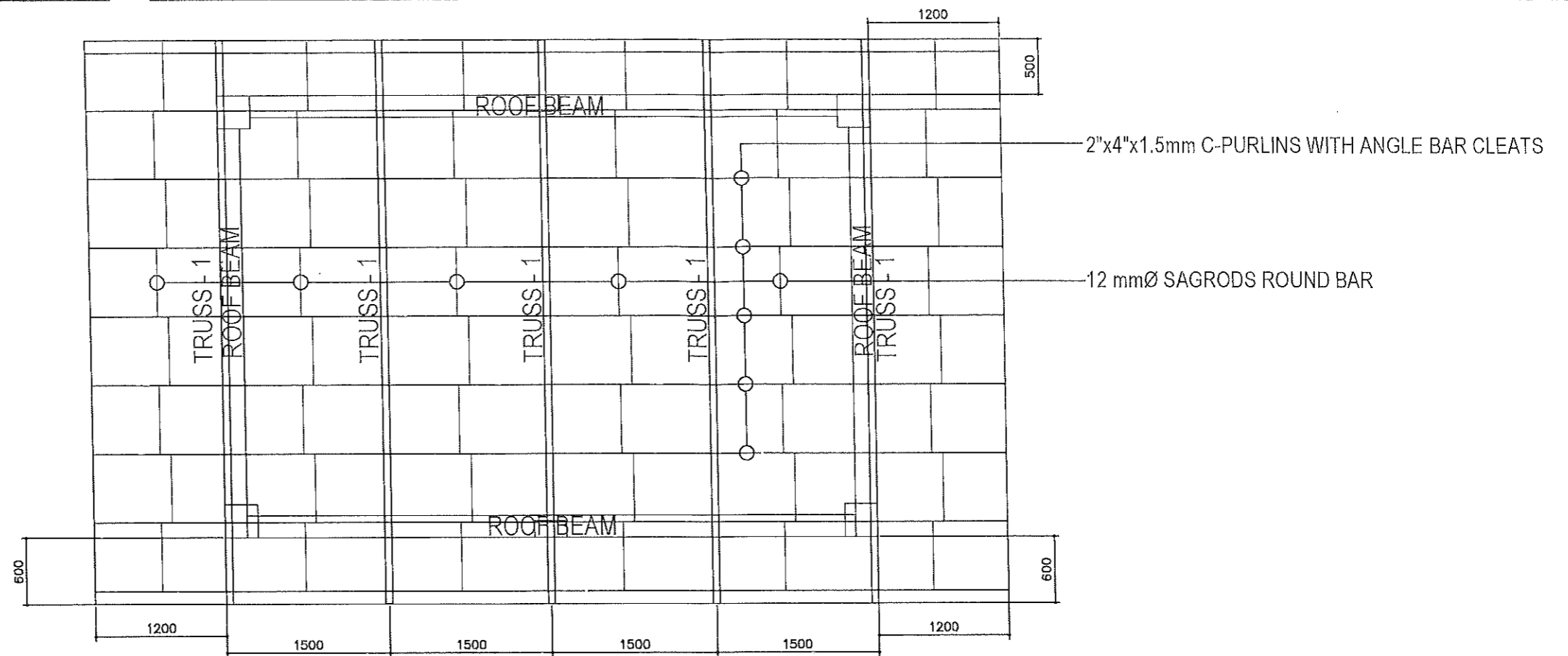


WIRE MESH FENCE DETAIL AT FRONT ELEVATION
SCALE 1 : 100 MTS.

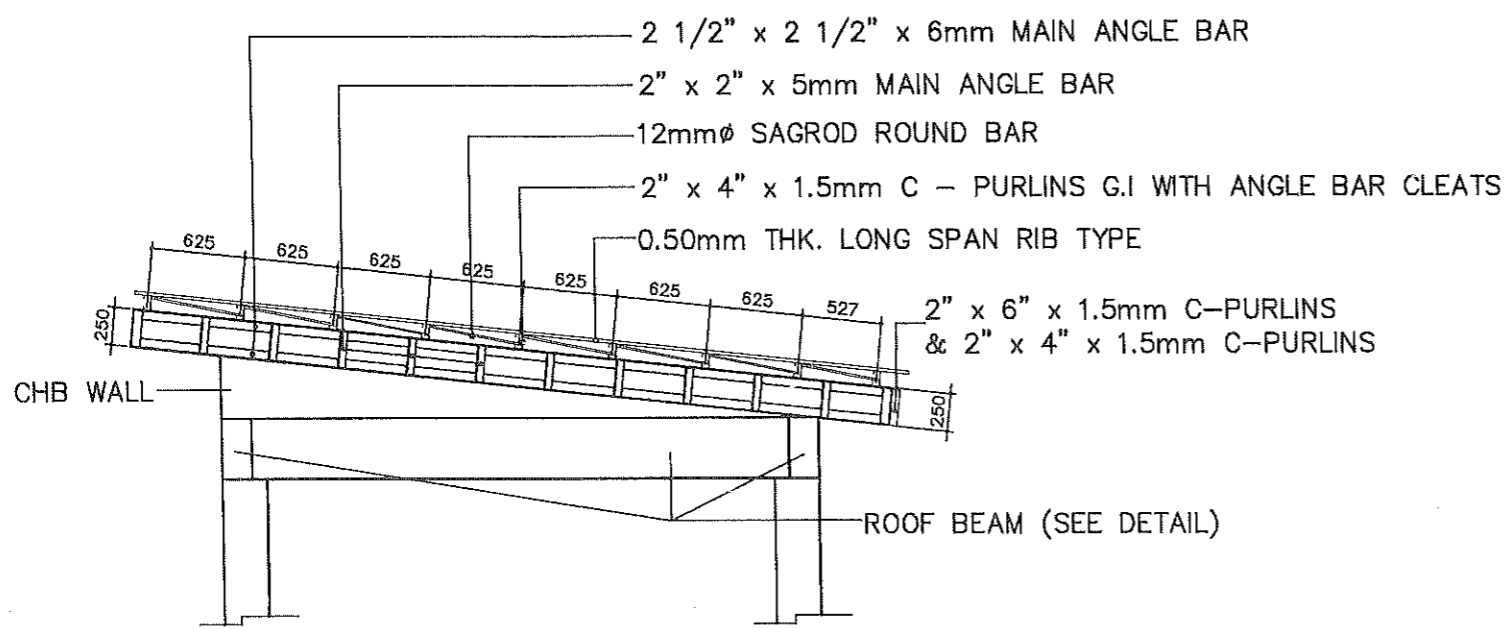


WIRE MESH FENCE DETAIL AT RIGHT SIDE ELEVATION
SCALE 1 : 50 MTS.

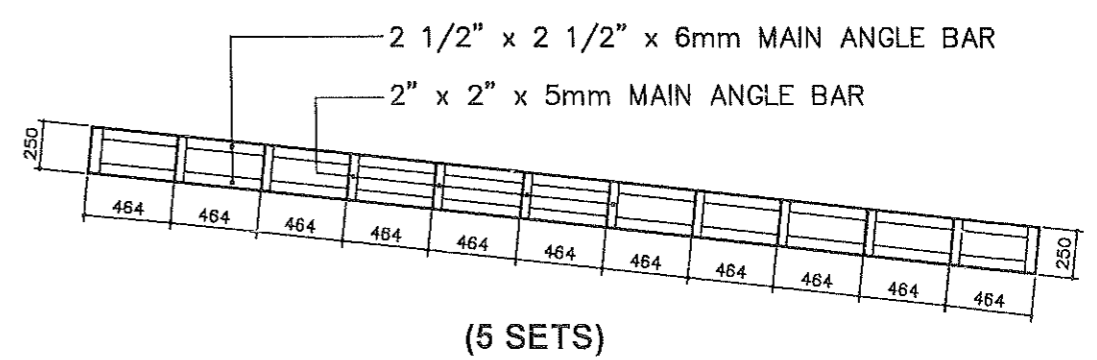
	FROM THE OFFICE OF:	PROJECT TITLE:	PREPARED BY:	CHECKED BY:	VERIFIED & SUBMITTED BY:	RECOMMENDING APPROVAL:	APPROVED BY:	SHEET CONTENTS:	SHEET NO.:
	REPUBLIC OF THE PHILIPPINES PROVINCE OF PAMPANGA PROVINCIAL ENGINEER'S OFFICE CAPITOL COMPOUND, CITY OF SAN FERNANDO, (P)	CONSTRUCTION OF MULTI-PURPOSE COVERED AREA WITH REINFORCED CONCRETE SLAB LOCATION: CAMIAS, PORAC, PAMPANGA	 MARK JOSEPH S. BELTRAN ENGINEER I	 BRYAN G. ALVARADO ENGINEER IV MAINTENANCE DIVISION HEAD	 WIFREDO A. MANALILI ASST. PROVINCIAL ENGINEER	 OLIMPIO M. PANGAN PROVINCIAL ENGINEER	 HON. DENNIS G. PINEDA GOVERNOR BY THE AUTHORITY OF THE GOVERNOR: ATTY. CHARLIE G. CHUA PROVINCIAL ADMINISTRATOR	AS SHOWN	



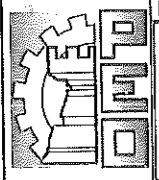
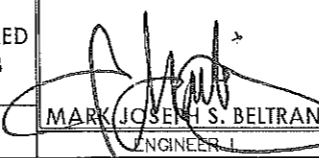
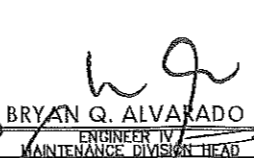
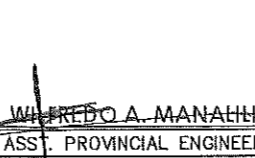
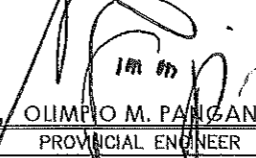
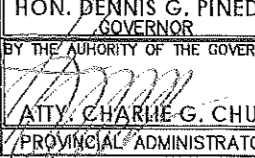
ROOF FRAMING PLAN
SCALE 1 : 50 MTS.

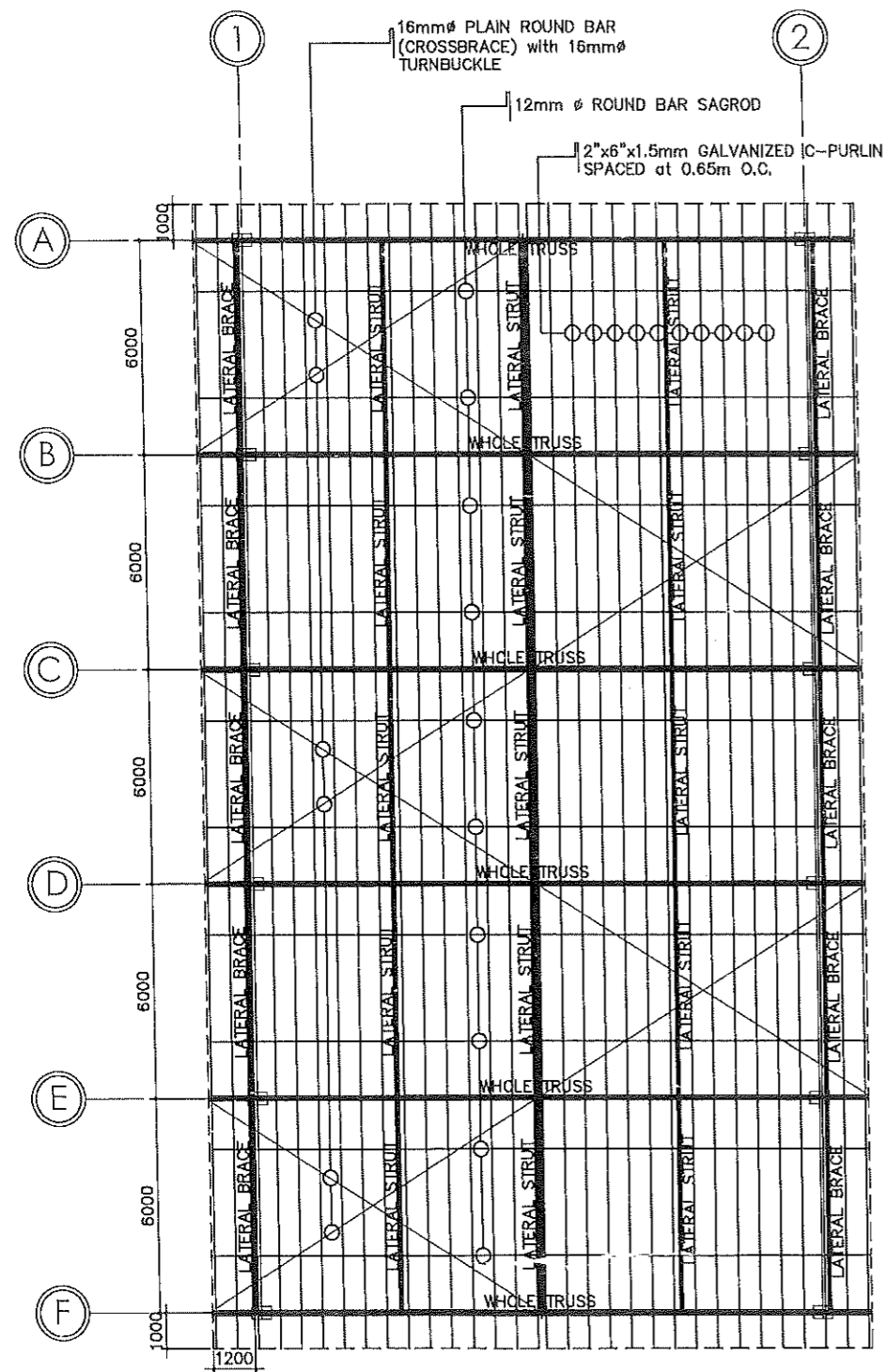


TYPICAL TRUSS DETAIL
SCALE 1 : 50 MTS.

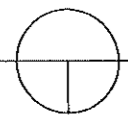


TRUSS DIAGRAM
SCALE 1 : 40 MTS.

FROM THE OFFICE OF:	PROJECT TITLE:	PREPARED BY:	CHECKED BY:	VERIFIED & SUBMITTED BY:	RECOMMENDING APPROVAL:	APPROVED BY:	SHEET CONTENTS:	SHEET NO.:
 REPUBLIC OF THE PHILIPPINES PROVINCE OF PAMPANGA PROVINCIAL ENGINEER'S OFFICE CAPITOL COMPOUND, CITY OF SAN FERNANDO, (P)	CONSTRUCTION OF MULTI-PURPOSE COVERED AREA WITH REINFORCED CONCRETE SLAB LOCATION: CAMIAS, PORAC, PAMPANGA	 MARK JOSEPH S. BELTRAN ENGINEER I	 BRYAN Q. ALVARADO ENGINEER IV MAINTENANCE DIVISION HEAD	 WILFREDO A. MANAHIL ASST. PROVINCIAL ENGINEER	 OLIMPIO M. PANGAN PROVINCIAL ENGINEER	 HON. DENNIS G. PINEDA GOVERNOR BY THE AUTHORITY OF THE GOVERNOR ATTY. CHARLIE G. CHUA PROVINCIAL ADMINISTRATOR	AS SHOWN	



ROOF FRAMING PLAN

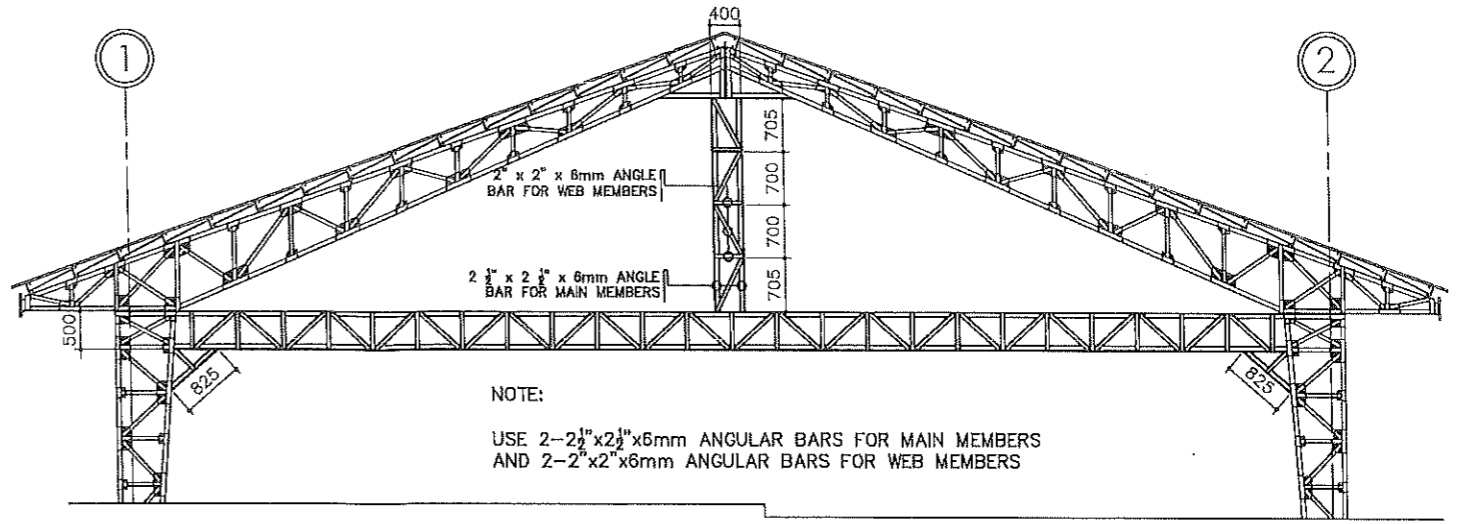


SCALE

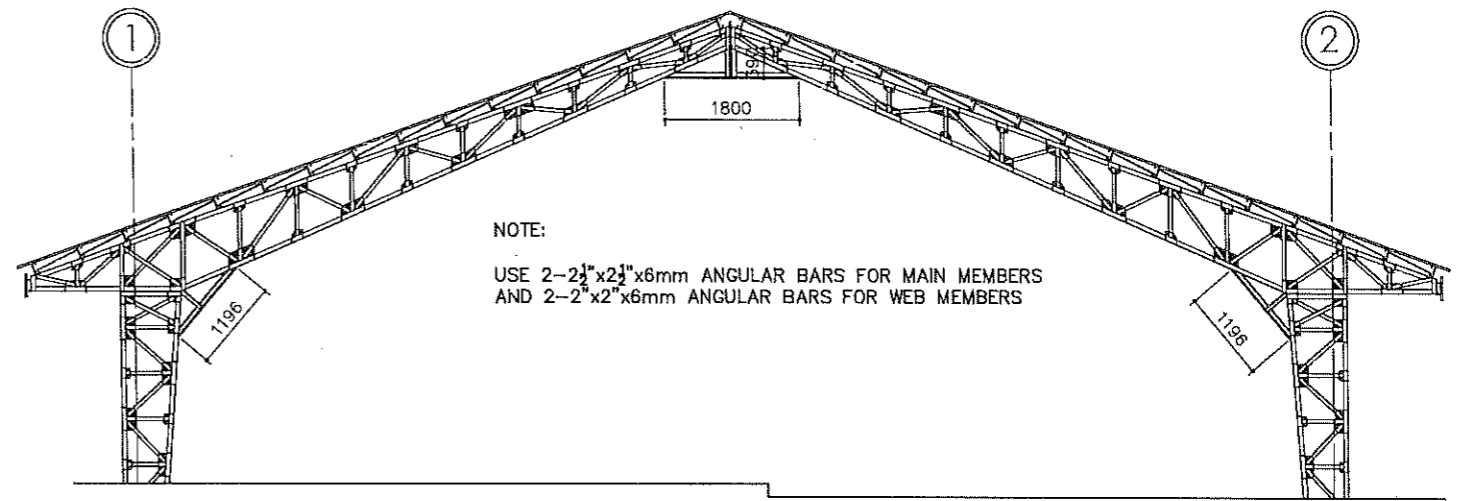
1:200m

NOTE:

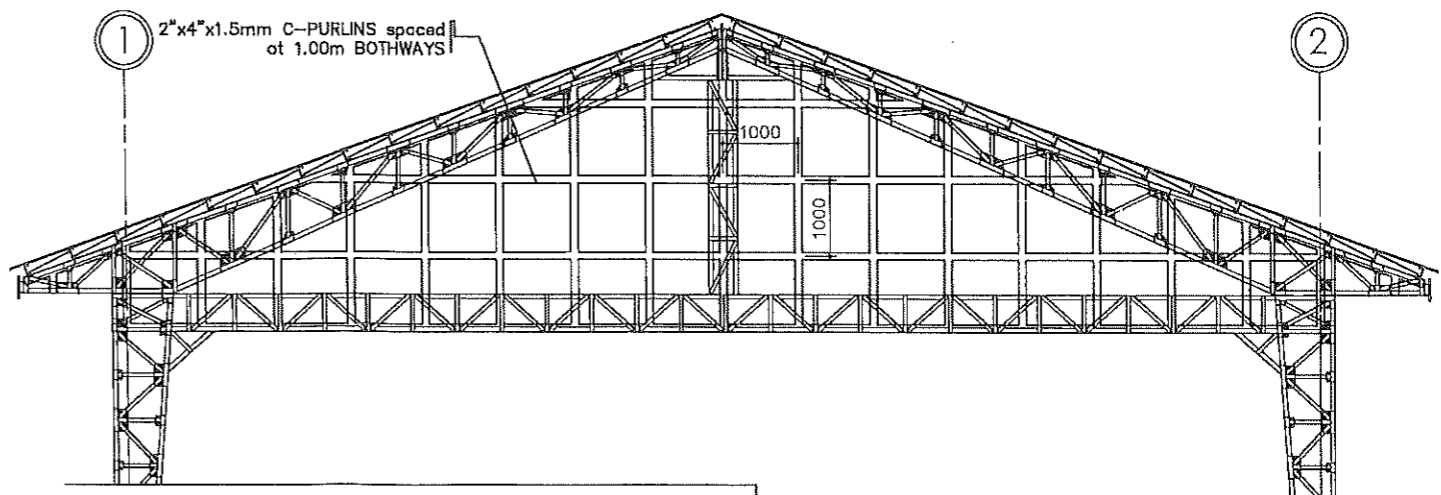
- APPLY EPOXY PRIMER W/ CATALYST ON ALL STRUCTURAL STEEL
- ALL MEMBER TO MEMBER AND PLATE TO MEMBER CONNECTION WHETHER BOLTED OR NOT MUST BE IN FULL WELD



FOR (A) (F)

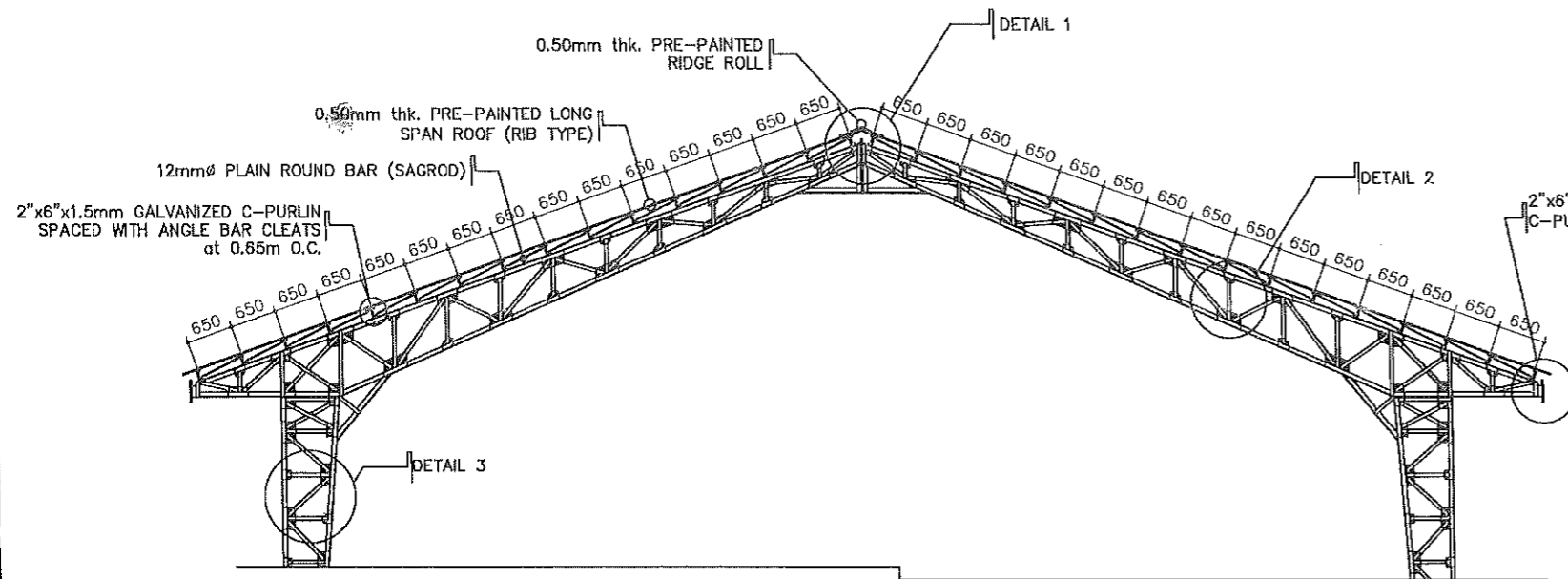


FOR (B) (C) (D) (E)

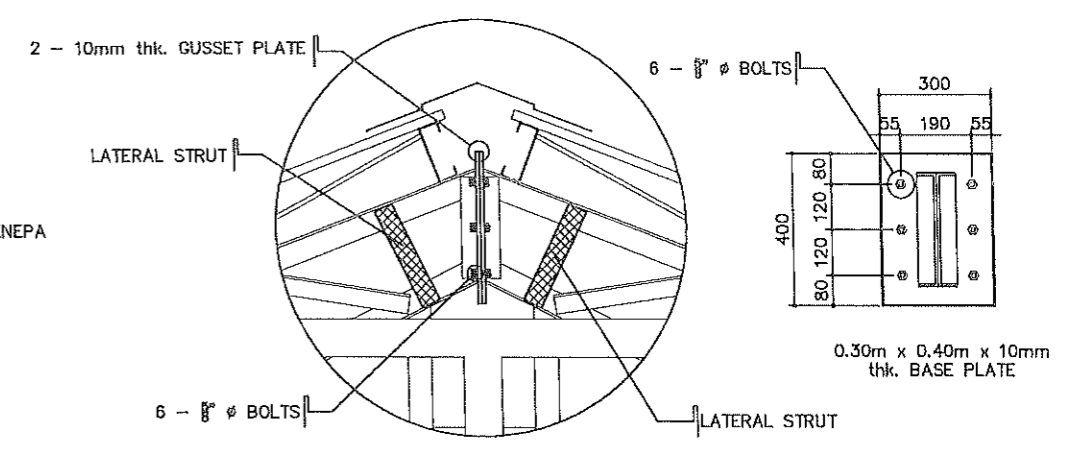


FOR (A) (F)

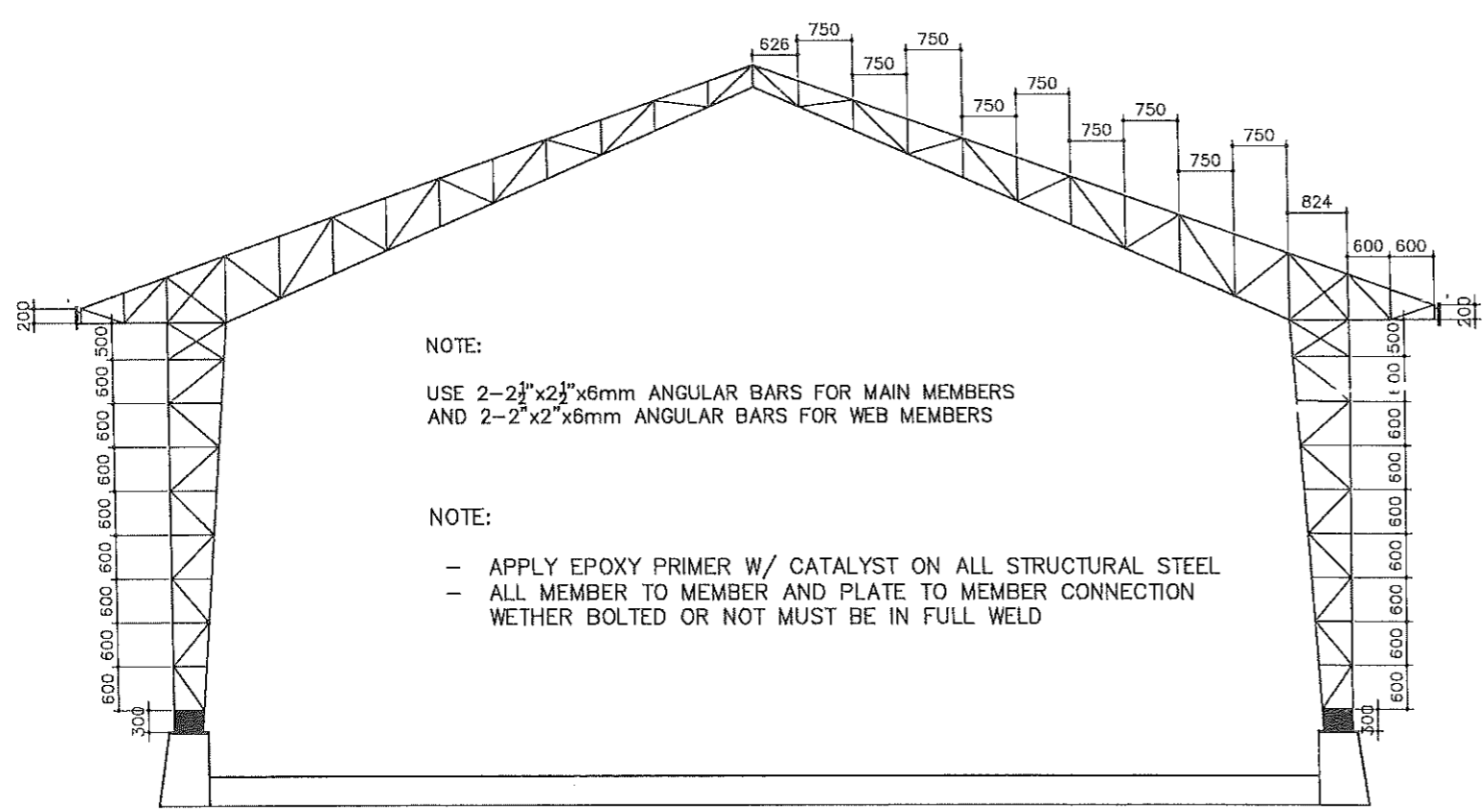
	FROM THE OFFICE OF:	PROJECT TITLE:	PREPARED BY:	CHECKED BY:	VERIFIED & SUBMITTED BY:	RECOMMENDING APPROVAL:	APPROVED BY:	SHEET CONTENTS:	SHEET NO.:
	REPUBLIC OF THE PHILIPPINES PROVINCE OF PAMPANGA PROVINCIAL ENGINEER'S OFFICE CAPITOL COMPOUND, CITY OF SAN FERNANDO, (P)	CONSTRUCTION OF MULTI-PURPOSE COVERED AREA WITH REINFORCED CONCRETE SLAB LOCATION: CAMIAS, PORAC, PAMPANGA	MARK JOSEPH S. BELTRAN ENGINEER I	BRYAN Q. ALVARADO ENGINEER IV MAINTENANCE DIVISION HEAD	WHEREDO A. MANAHLI ASST. PROVINCIAL ENGINEER	OLIMPIO M. PANGAN PROVINCIAL ENGINEER	HON. DENNIS G. PINEDA GOVERNOR BY THE AUTHORITY OF THE GOVERNOR: ATTY. CHARLIE G. CHUA PROVINCIAL ADMINISTRATOR	AS SHOWN	11/15



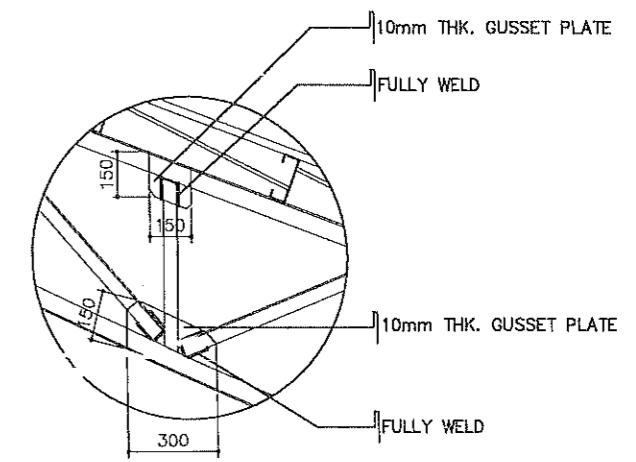
TYPICAL TRUSS DETAIL
SCALE 1:100m



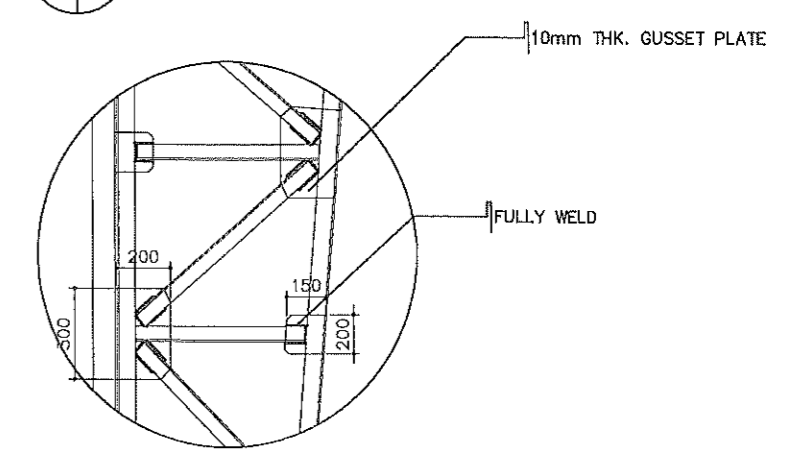
DETAIL 1
SCALE NTS



TRUSS DIAGRAM
SCALE 1:100m

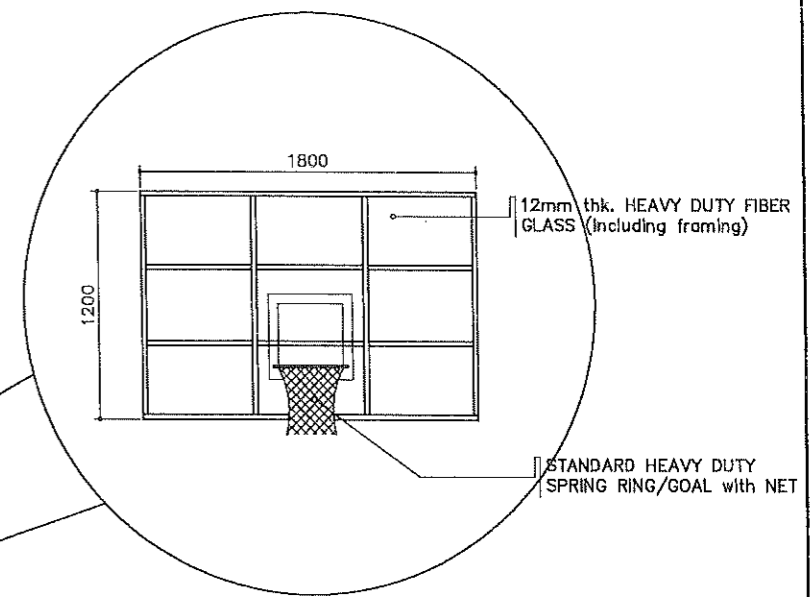
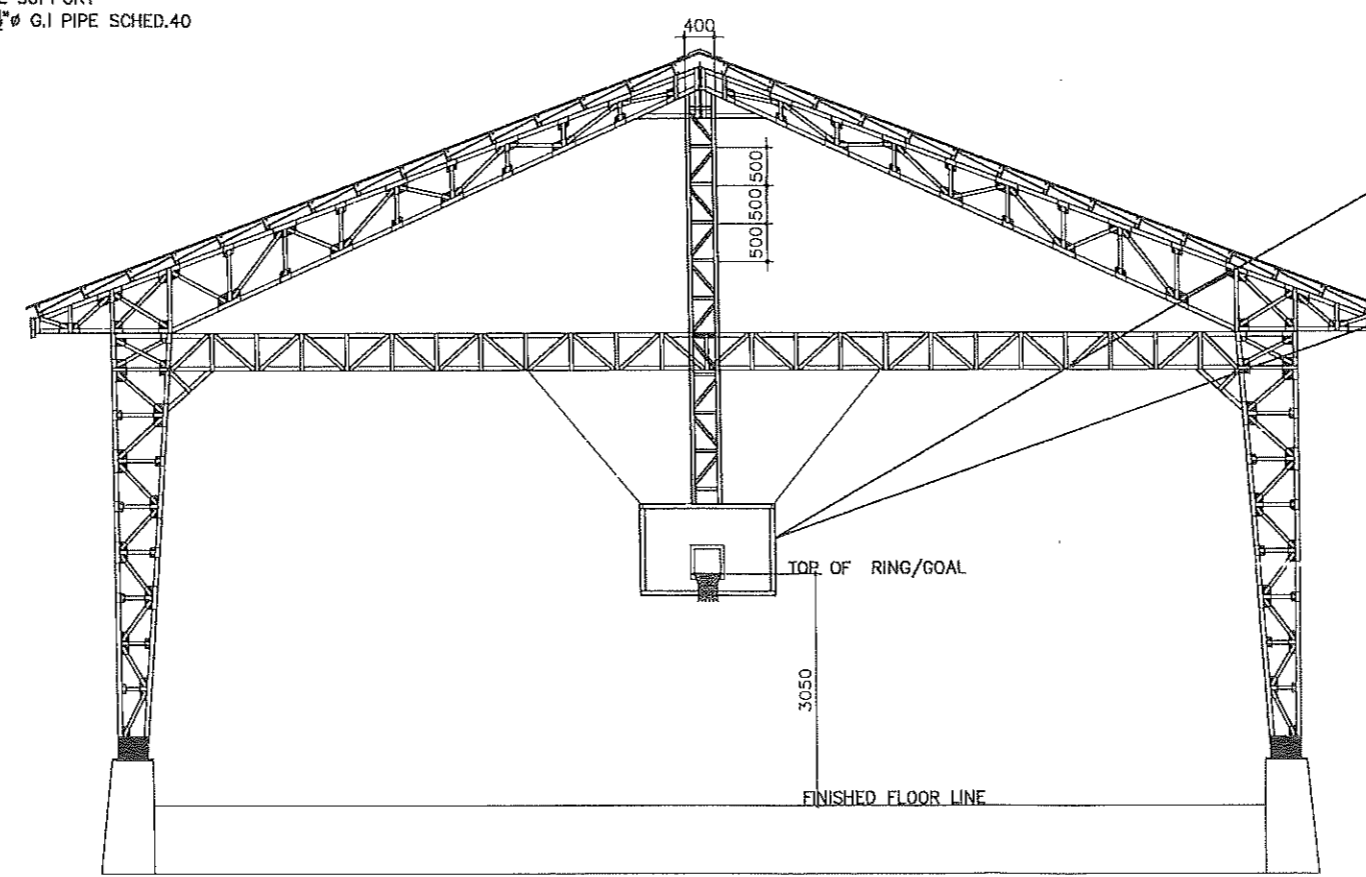
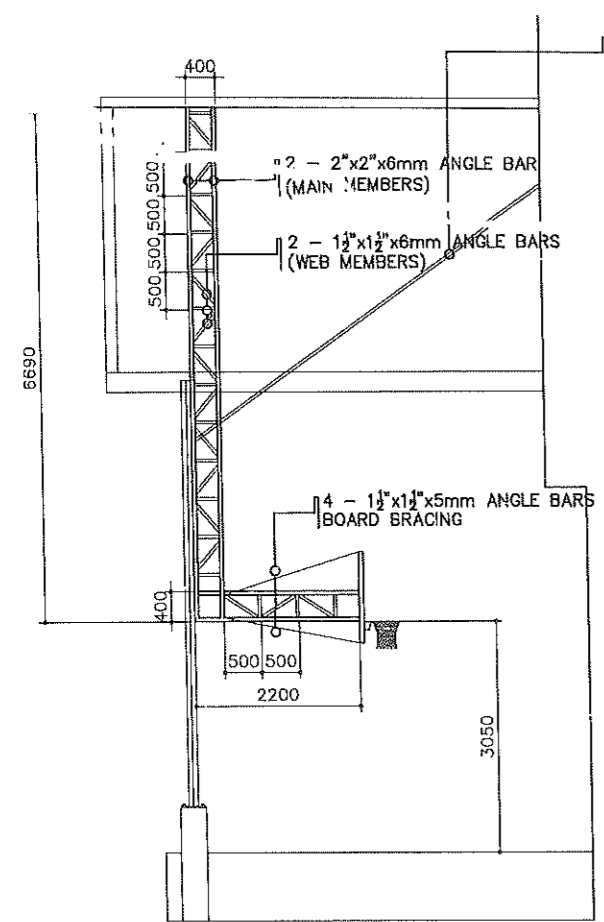
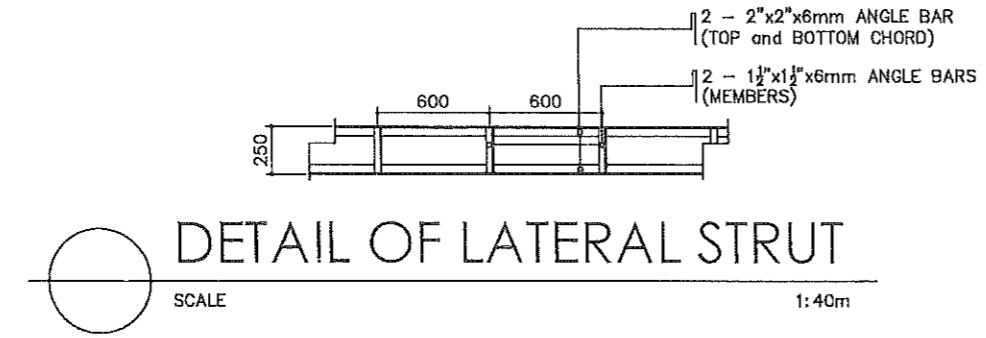
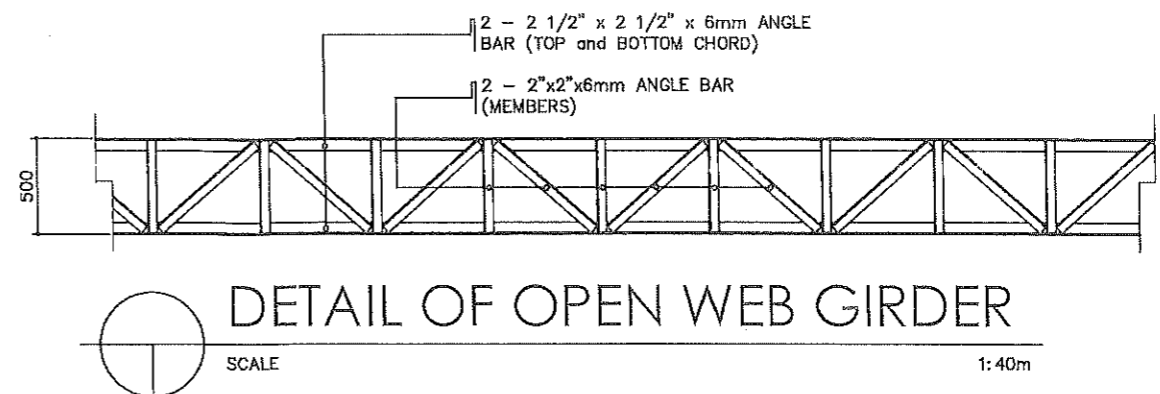
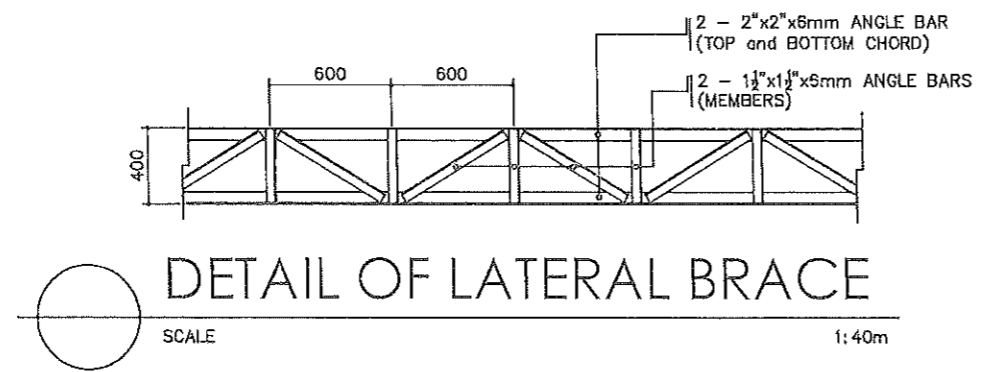


DETAIL 2
SCALE NTS

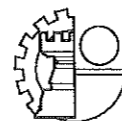
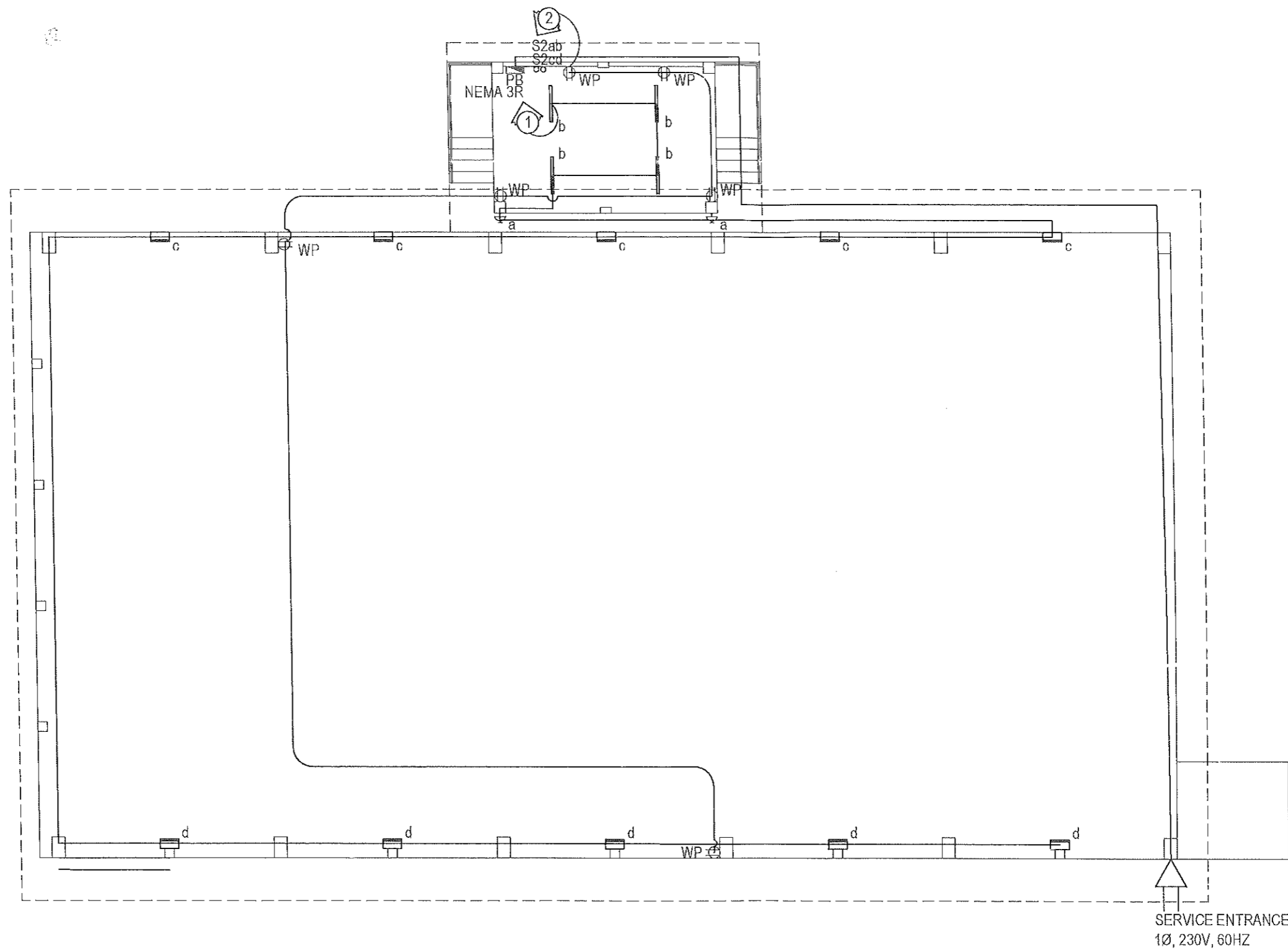


DETAIL 3
SCALE NTS

	FROM THE OFFICE OF:	PROJECT TITLE:	PREPARED BY:	CHECKED BY:	VERIFIED & SUBMITTED BY:	RECOMMENDING APPROVAL:	APPROVED BY:	SHEET CONTENTS:	SHEET NO.:
	REPUBLIC OF THE PHILIPPINES PROVINCE OF PAMPANGA PROVINCIAL ENGINEER'S OFFICE CAPITOL COMPOUND, CITY OF SAN FERNANDO, (P)	CONSTRUCTION OF MULTI-PURPOSE COVERED AREA WITH REINFORCED CONCRETE SLAB LOCATION: CAMIAS, PORAC, PAMPANGA	MARK JOSEPH S. BELTRAN ENGINEER I	BRYAN Q. ALVARADO ENGINEER IV MAINTENANCE DIVISION HEAD	WILFREDO A. MANALLI ASST. PROVINCIAL ENGINEER	OLIMPIO M. PANGAN PROVINCIAL ENGINEER	HON. DENNIS G. PINEDA GOVERNOR BY THE AUTHORITY OF THE GOVERNOR: ATTY. CHARIE G. CHUA PROVINCIAL ADMINISTRATOR	AS SHOWN	12/15



	FROM THE OFFICE OF:	PROJECT TITLE:	PREPARED BY:	CHECKED BY:	VERIFIED & SUBMITTED BY:	RECOMMENDING APPROVAL:	APPROVED BY:	SHEET CONTENTS:	SHEET NO.:
	REPUBLIC OF THE PHILIPPINES PROVINCE OF PAMPANGA PROVINCIAL ENGINEER'S OFFICE CAPITOL COMPOUND, CITY OF SAN FERNANDO, (P)	CONSTRUCTION OF MULTI-PURPOSE COVERED AREA WITH REINFORCED CONCRETE SLAB LOCATION: CAMIAS, PORAC, PAMPANGA	MARK JOSEPH S. BELTRAN ENGINEER I	BRYAN Q. ALVARADO ENGINEER IV MAINTENANCE DIVISION HEAD	WEREDO A. MANALILI ASST. PROVINCIAL ENGINEER	OLIMPIO M. PANGAN PROVINCIAL ENGINEER	HON. DENNIS G. PINEDA GOVERNOR BY THE AUTHORITY OF THE GOVERNOR: ATTY. CHARIE G. CHUA PROVINCIAL ADMINISTRATOR	AS SHOWN	13/15



LIGHTING AND POWER LAYOUT

SCALE 1 : 125 MTS.

FROM THE OFFICE OF:	PROJECT TITLE:	PREPARED BY:	CHECKED BY:	VERIFIED & SUBMITTED BY:	RECOMMENDING APPROVAL:	APPROVED BY:	SHEET CONTENTS:	SHEET NO.:
REPUBLIC OF THE PHILIPPINES PROVINCE OF PAMPANGA PROVINCIAL ENGINEER'S OFFICE CAPITOL COMPOUND, CITY OF SAN FERNANDO, (P)	CONSTRUCTION OF MULTI-PURPOSE COVERED AREA WITH REINFORCED CONCRETE SLAB LOCATION: CAMIAS, PORAC, PAMPANGA	MARK JOSEPH S. BELTRAN ENGINEER-I MICHAEL T. MONTEMAYOR ENGINEER-III	BRYAN Q. ALVARADO ENGINEER-IV MAINTENANCE DIVISION HEAD	WILFREDO A. MANALIL ASST. PROVINCIAL ENGINEER	OLIMPIO M. PANGAN PROVINCIAL ENGINEER	HON. DENNIS G. PINEDA GOVERNOR ATY. CHARLIE G. CHUA PROVINCIAL ADMINISTRATOR	AS SHOWN	14/15

GENERAL NOTES

- ALL ELECTRICAL WORKS HEREIN SHALL BE DONE IN ACCORDANCE WITH THESE PLANS AND SPECIFICATIONS. THE APPLICABLE PROVISIONS OF THE LATEST EDITION OF THE PHILIPPINE ELECTRICAL CODE, THE RULES AND REGULATIONS OF THE LOCAL ENFORCING AUTHORITY AND THE REQUIREMENTS OF THE LOCAL POWER AND TELEPHONE COMPANIES.
- THE ELECTRICAL WORKS HEREIN SHALL BE DONE UNDER THE IMMEDIATE SUPERVISION OF A DULY LICENSED ELECTRICAL ENGINEER OR LICENSED MASTER ELECTRICIAN.
- THE ELECTRIC SERVICE VOLTAGE TO THE BUILDING IS SINGLE PHASE (1Ø), 2-WIRE+GROUND, 230 VOLTS, 60 HERTZ SYSTEM.
- ALL BRANCH CIRCUIT INSTALLATIONS FOR LIGHTING, POWER AND AUXILIARY SHALL BE IN POLYVINYL CHLORIDE PIPE (PVC). FOR SERVICE ENTRANCE AND FEEDERS SHALL BE IN INTERMEDIATE METAL CONDUIT (IMC).
- MINIMUM SIZE OF WIRE AND CONDUIT ARE 3.5sq.mm. THHN AND 20mmØ (1/2"); RESPECTIVELY.
- ALL FEEDERS AND BRANCH CIRCUITS SHALL BE INSTALLED AS INDICATED ON THE PLANS. BRANCH CIRCUITS HOMERUN WIRES SHALL BE INSTALLED IN INDIVIDUAL HOMERUN CIRCUITS.
- ALL MATERIALS TO BE USED AND THE EQUIPMENT TO BE INSTALLED SHALL BE NEW AND MUST BE OF THE APPROVED TYPES FOR THE PARTICULAR LOCATION AND PURPOSE INTENDED.
- ALL SERVICE ENTRANCE EQUIPMENT, PANELBOARDS AND NON-CURRENT CARRYING METAL PARTS SHALL BE PROPERLY GROUNDED IN ACCORDANCE WITH THE PHILIPPINE ELECTRICAL CODE.
- PULLBOXES, AND/OR SPLICE BOXES SHALL BE PROVIDED EVEN IF NOT INDICATED ON THE PLANS; BUT FIELD CONDITIONS REQUIRE.
- ADEQUATE AND EFFECTIVE GROUNDING SHALL BE PROVIDED.
- MOUNTING HEIGHT (VERIFY EXACT HEIGHT)

RECEPTACLE OUTLET.....300MM FROM FLOOR FINISH
 RECEPTACLE COUNTER HEIGHT.....920MM FROM FLOOR FINISH
 LIGHT SWITCHES.....1370MM FROM FLOOR FINISH

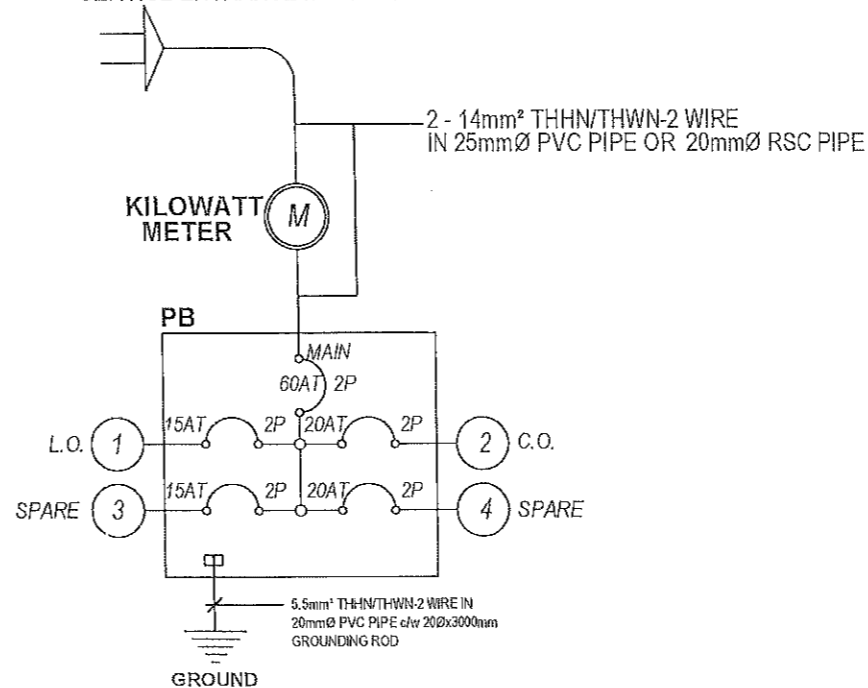
LEGEND:

	1 x 18W LED T8 LINEAR LIGHT
	1 x 12W LED OUTDOOR WALL LAMP
	DUPLEX CONVENIENCE OUTLET (WEATHERPROOF)
	PANELBOARD
	HOME RUN
	TWO GANG SWITCH

CKT. NO.	DESCRIPTION	CONNECTED LOAD			OVER CURRENT PROTECTION				SIZE OF WIRE AND PVC CONDUITS
		V	VA	A	AT	AF	P	KA	
1	4-1 x 18W LED T8 LINEAR LIGHT, 2-1 x 12W LED OUTDOOR WALL LAMP, 10-1 X LED FLOODLIGHT (100 WATTS)	230	1096	4.77	15	50	2	10	2-3.5mm ² THHN/THWN-2 LINE + 2.0mm ² THHN/THWN-2 GROUND IN 20 mm DIA. PVC CONDUIT or 15mm dia. EMT Conduit
2	6-1 x 180W DUPLEX CONVENIENCE OUTLET (WEATHERPROOF)	230	1080	4.70	20	50	2	10	2-3.5mm ² THHN/THWN-2 LINE + 2.0mm ² THHN/THWN-2 GROUND IN 20 mm DIA. PVC CONDUIT or 15mm dia. EMT Conduit
3	SPARE	230	1500	6.52	20	50	2	10	20mmØ PVC CONDUIT STUB-OUT
4	SPARE	230	1500	6.52	20	50	2	10	20mmØ PVC CONDUIT STUB-OUT
TOTAL CONNECTED LOAD :			5176	22.50					

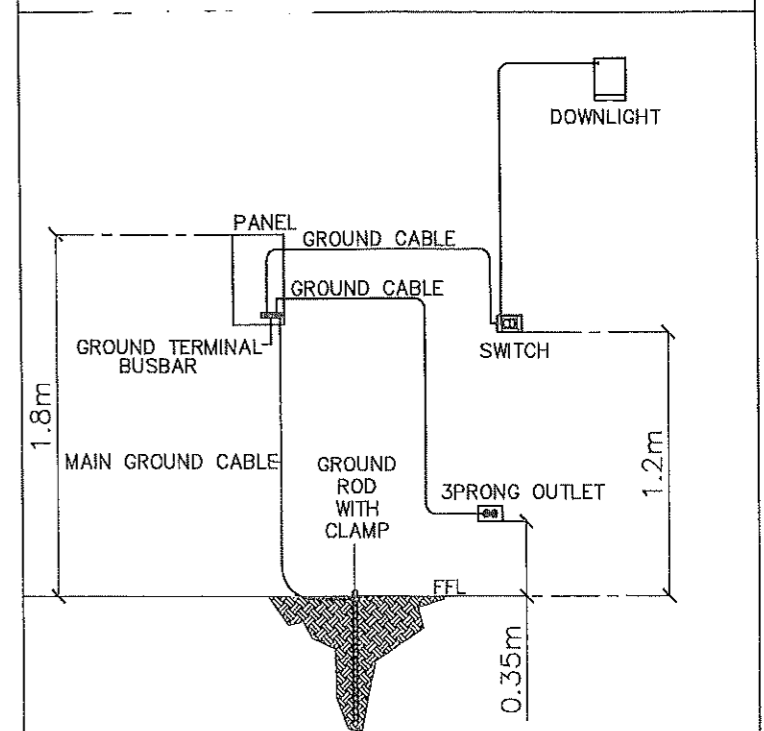
FEEDER LINE COMPUTATION:	MAIN CIRCUIT BREAKER COMPUTATION:	USE :
$I = (22.505) 100\% DF$	$I = (22.505) 100\% DF$	60AT/100AF, 2P, MCCB
$I = 22.51 \text{ Amps}$	$I = 22.51 \text{ Amps}$	2-14mm ² THHN/THWN-2 (L) + 5.5mm ² THHN/THWN-2 (G) IN 25 mmØ PVC CONDUIT OR IN 20mmØ RSC CONDUIT

SERVICE ENTRANCE 230 VOLTS



SINGLE LINE DIAGRAM

DEDICATED GROUNDING SYSTEM
(GROUND CABLE SIZE SEE LOAD SCHEDULE)



 FROM THE OFFICE OF: REPUBLIC OF THE PHILIPPINES PROVINCE OF PAMPANGA PROVINCIAL ENGINEER'S OFFICE CAPITOL COMPOUND, CITY OF SAN FERNANDO, (P)	PROJECT TITLE:	PREPARED BY:	CHECKED BY:	VERIFIED & SUBMITTED BY:	RECOMMENDING APPROVAL:	APPROVED BY:	SHEET CONTENTS:	SHEET NO.:
	CONSTRUCTION OF MULTI-PURPOSE COVERED AREA WITH REINFORCED CONCRETE SLAB LOCATION: CAMIAS, PORAC, PAMPANGA	MARK JOSEPH S. BELTRAN ENGINEER MICHAEL T. MONTEMAYOR ENGINEER III	BRYAN Q. ALVARADO ENGINEER IV MAINTENANCE DIVISION HEAD	WILFREDO A. MANATILI ASST. PROVINCIAL ENGINEER	OLMPPIO M. PANGAN PROVINCIAL ENGINEER	HON. DENNIS G. PINEDA GOVERNOR BY THE AUTHORITY OF THE GOVERNOR: ATTY. CHARLIE G. CHUA PROVINCIAL ADMINISTRATOR	AS SHOWN	1