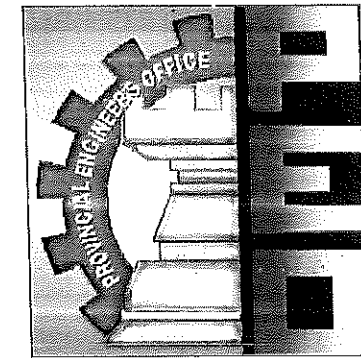
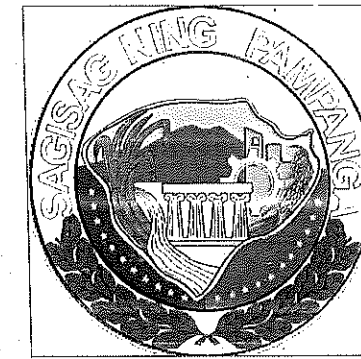


REPUBLIC OF THE PHILIPPINES  
 PROVINCE OF PAMPANGA

# PROVINCIAL ENGINEER'S OFFICE

CAPITOL COMPOUND, CITY OF SAN FERNANDO, PAMPANGA

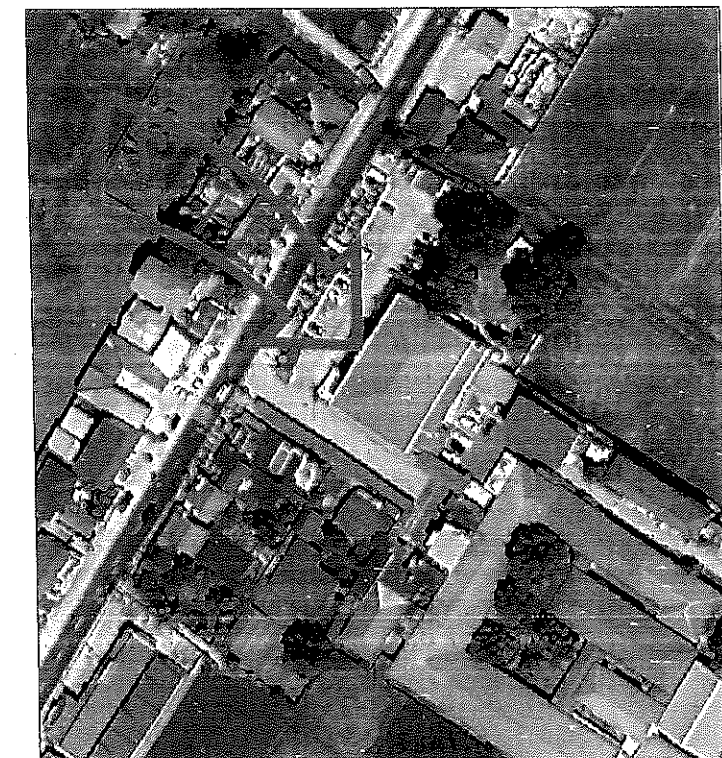


## SCOPE OF WORKS

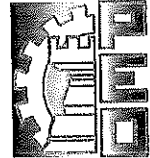
- 1.) RECONSTRUCTION OF RAMPS FOR PWD
- 2.) CONSTRUCTION OF ROOFING FOR THE RAMPS
- 3.) PAINTING OF PWD PARKINGS
- 4.) RENOVATION OF PWD COMFORT ROOM
- 5.) REPAINTING OF FIRST FLOOR FRONT WALL

### PROJECT TITLE AND LOCATION:

**IMPROVEMENT OF ROMANA PANGAN  
 DISTRICT HOSPITAL AT SAN JOSE,  
 FLORIDABLANCA, PAMPANGA**

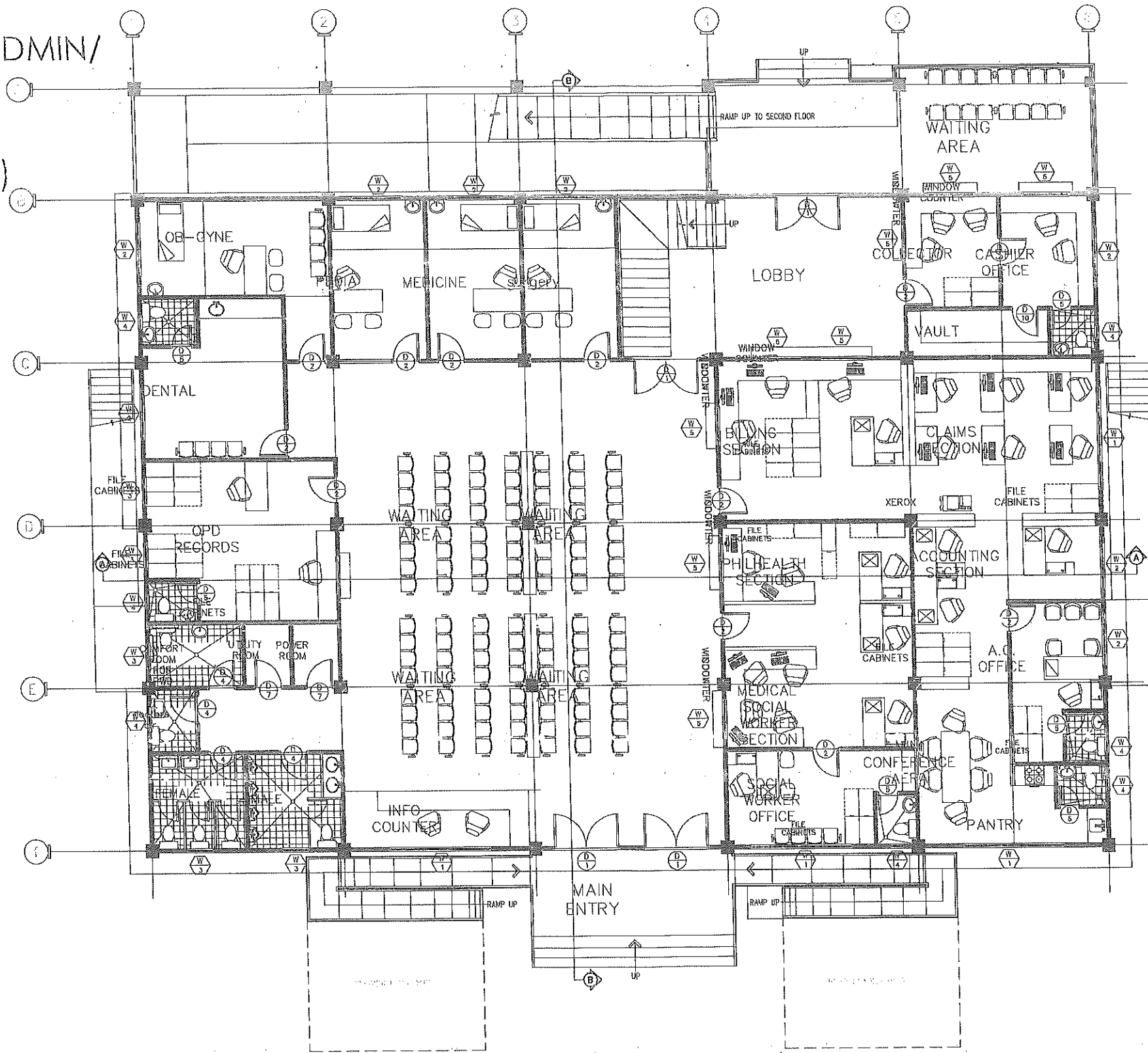


VICINITY MAP  
 SCALE: NTS.

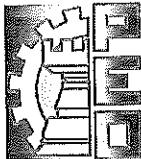
 REPUBLIC OF THE PHILIPPINES PROVINCE OF PAMPANGA <b>PROVINCIAL ENGINEER'S OFFICE</b> CAPITOL COMPOUND, CITY OF SAN FERNANDO	PROJECT TITLE:	PREPARED BY:	CHECKED AND SUBMITTED BY:	VERIFIED AND SUBMITTED BY:	RECOMMENDING APPROVAL:	APPROVED BY:	SHEET CONTENT:	SHEET NO:
	IMPROVEMENT OF ROMANA PANGAN DISTRICT HOSPITAL	JULIE ANN L. SUNGLAO ENGINEER II	ESMERALDO T. GULAPA ENGINEER IV	WILFREDO A. MANALILI ASSISTANT PROVINCIAL ENGINEER	OLIMPIO M. PANBAN PROVINCIAL ENGINEER	Hon. DENNIS G. PINEDA GOVERNOR BY THE AUTHORITY OF THE GOVERNOR: AVD. CHARLE G. CHUA PROVINCIAL ADMINISTRATOR	AS SHOWN	1 9

TWO STOREY OPD/ADMIN/  
WARD BUILDING

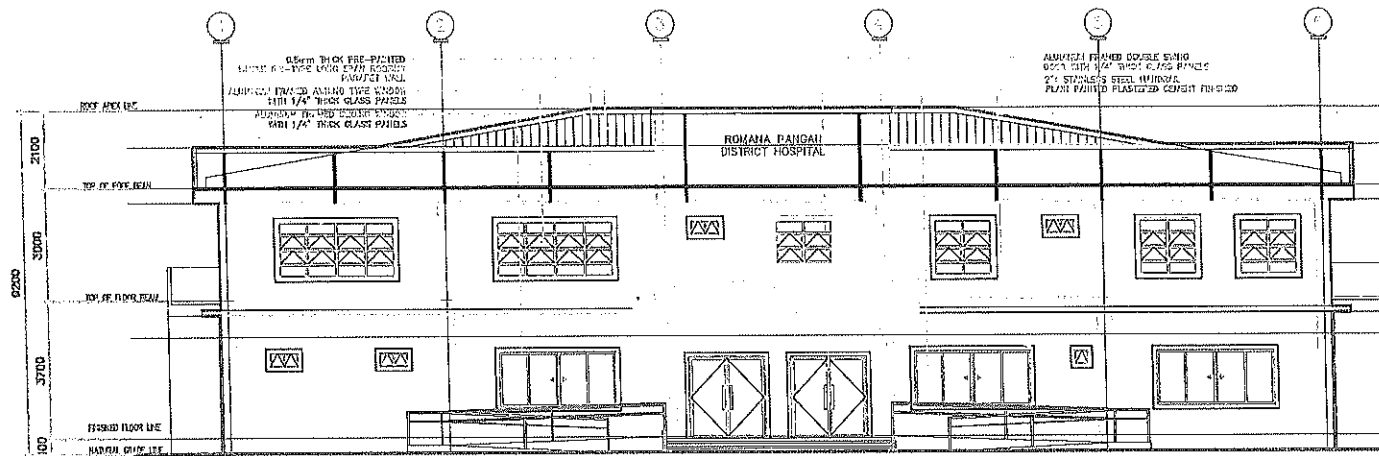
(ROMANA PANGAN)



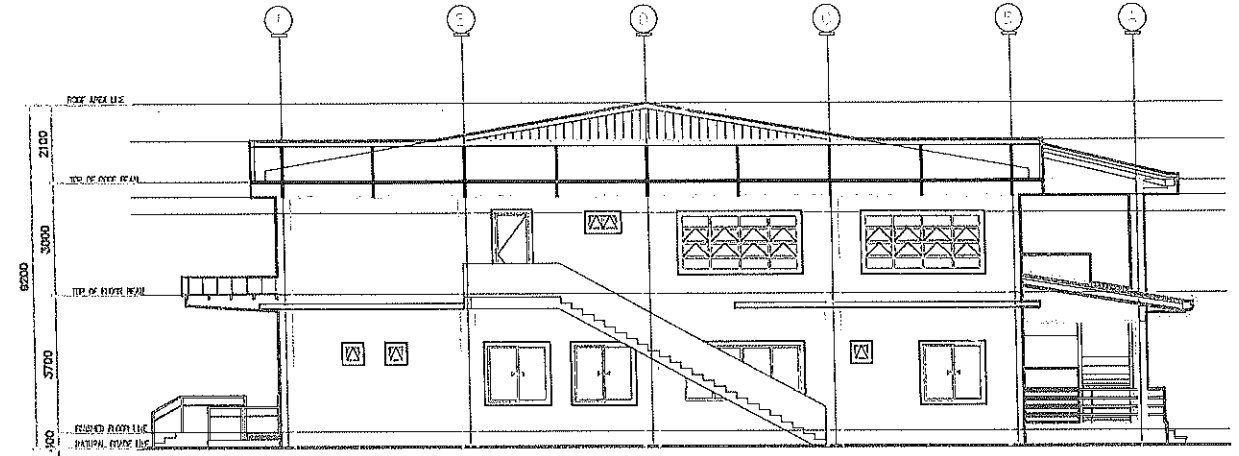
EXISTING FLOOR PLAN

 <p>REPUBLIC OF THE PHILIPPINES PROVINCE OF PAMPANGA <b>PROVINCIAL ENGINEER'S OFFICE</b> CAPITOL COMPOUND, CITY OF SAN FERNANDO</p>	<p>PROJECT TITLE: IMPROVEMENT OF ROMANA PANGAN DISTRICT HOSPITAL</p>	<p>PREPARED BY: JULIE ANN L. SUNGLAO ENGINEER I EDRALIN M. DANAN ENGINEER II</p>	<p>CHECKED AND SUBMITTED BY: ESMERALDO T. GULAPA ENGINEER IV</p>	<p>VERIFIED AND SUBMITTED BY: WILFREDO A. MANALILI ASSISTANT PROVINCIAL ENGINEER</p>	<p>RECOMMENDING APPROVAL: OLINPIO M. PANGAN PROVINCIAL ENGINEER</p>	<p>APPROVED BY: Hon. DENNIS G. PINEDA GOVERNOR BY THE AUTHORITY OF THE GOVERNOR: ATY. JOHNNIE G. CHUA PROVINCIAL ADMINISTRATOR</p>	<p>SHEET CONTENT: AS SHOWN</p>	<p>SHEET NO. 2/9</p>
	<p>LOCATION: SAN JOSE, FLORIDABLANCA, PAMPANGA</p>							

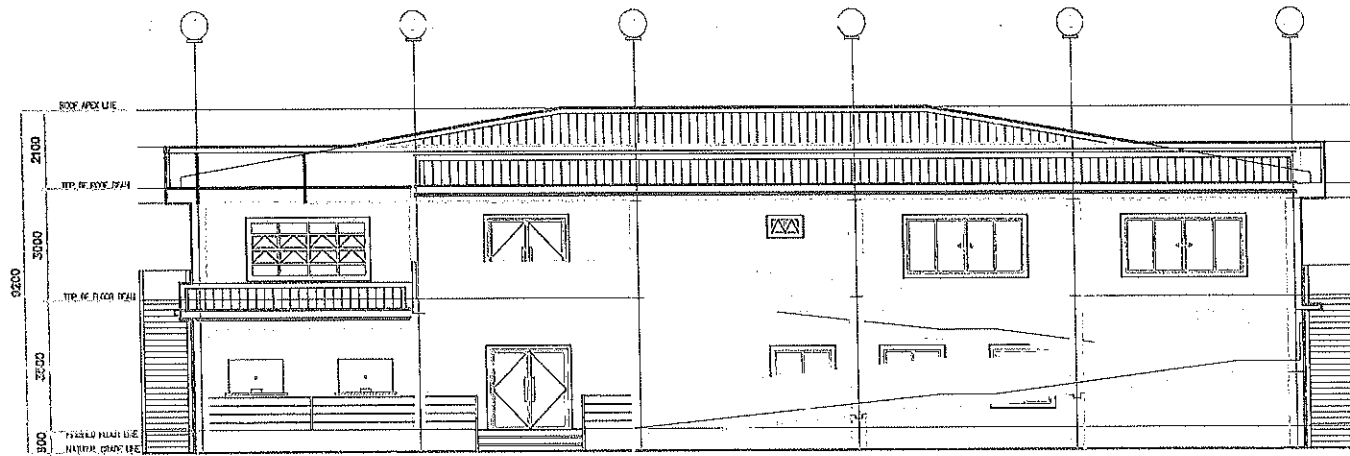
# EXISTING STRUCTURE TWO STOREY OPD/ADMIN/WARD BUILDING (ROMANA PANGAN)



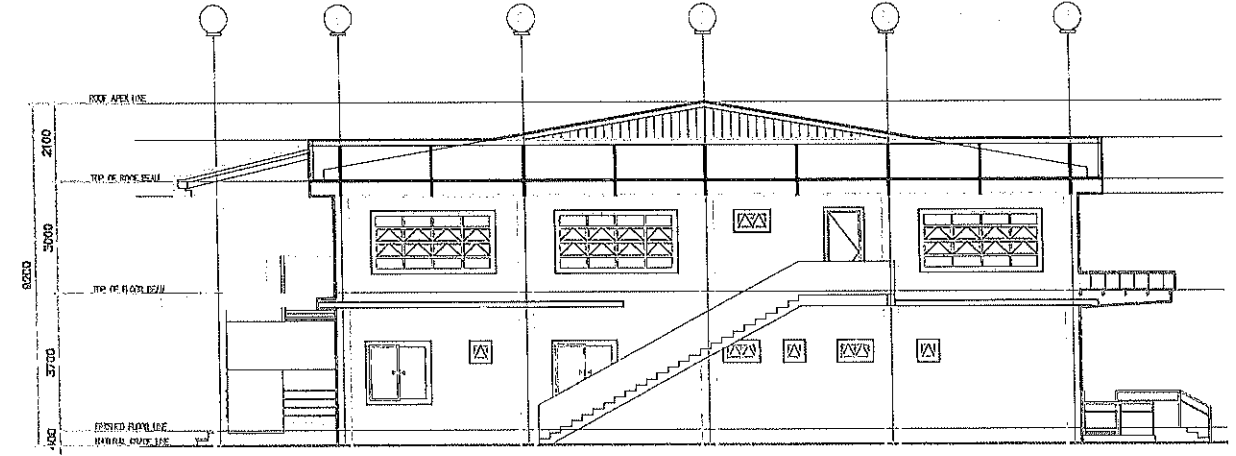
**FRONT ELEVATION**  
 SCALE 1:200m



**RIGHT SIDE ELEVATION**  
 SCALE 1:200m

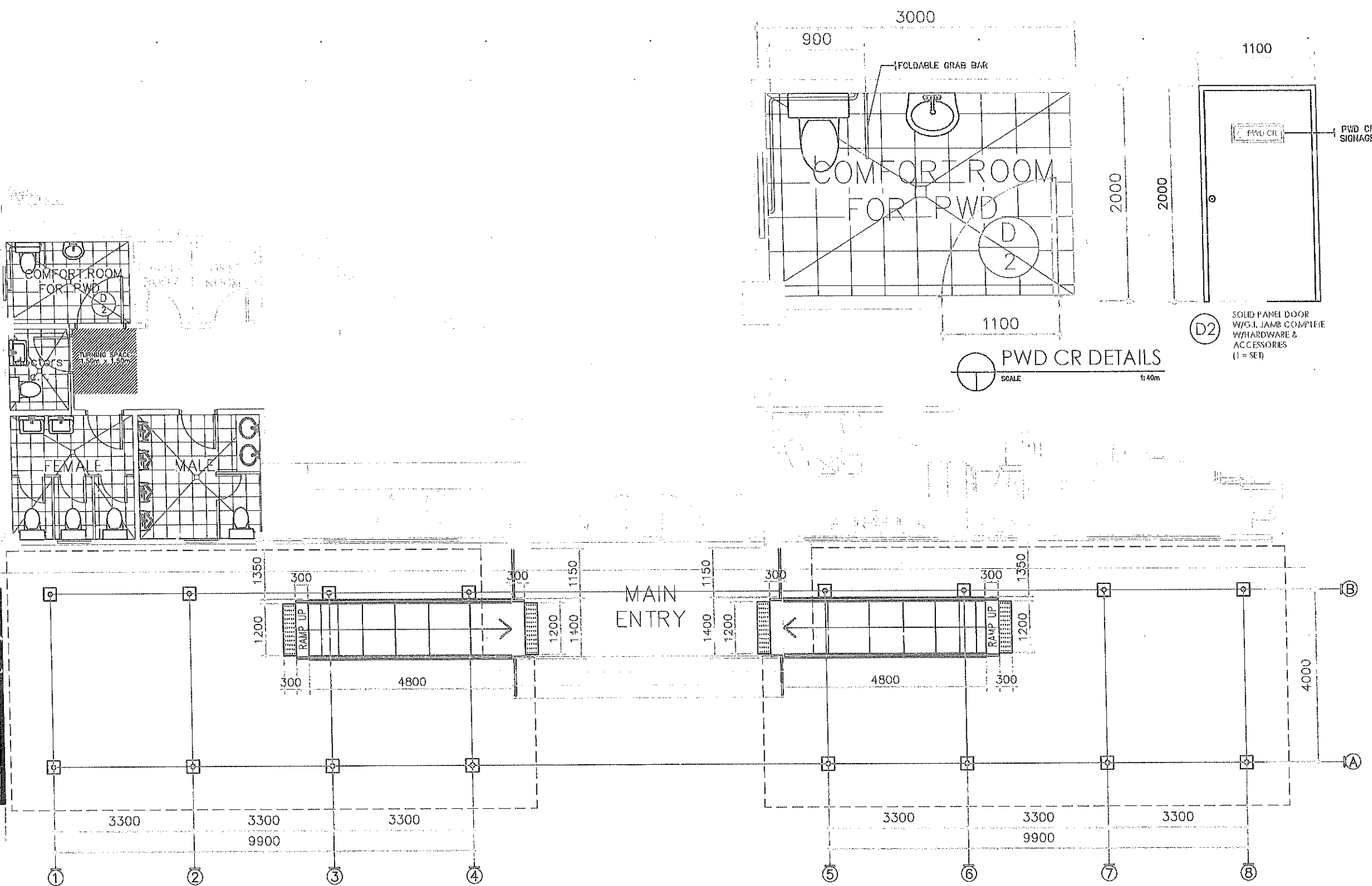


**REAR ELEVATION**  
 SCALE 1:200m

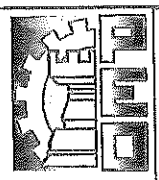


**LEFT SIDE ELEVATION**  
 SCALE 1:200m

 REPUBLIC OF THE PHILIPPINES PROVINCE OF PAMPANGA <b>PROVINCIAL ENGINEER'S OFFICE</b> CAPITOL COMPOUND, CITY OF SAN FERNANDO	PROJECT TITLE:	PREPARED BY:	CHECKED AND SUBMITTED BY:	VERIFIED AND SUBMITTED BY:	RECOMMENDING APPROVAL:	APPROVED BY:	SHEET CONTENT:	SHEET NO.:
	IMPROVEMENT OF ROMANA PANGAN DISTRICT HOSPITAL LOCATION: SAN JOSE, FLORIDABLANCA, PAMPANGA	JULIE ANN T. SUNGLAO <small>ENGINEER</small> EDRALIN M. DANAN <small>ENGINEER II</small>	ESMERALDO T. GULAPA <small>ENGINEER IV</small> WILFREDO A. MANALILI <small>ASSISTANT PROVINCIAL ENGINEER</small>	OLIMPIO M. PANGANAN <small>PROVINCIAL ENGINEER</small>	Hon. DENNIS G. PINEDA <small>GOVERNOR</small> BY THE AUTHORITY OF THE GOVERNOR: ATTY. ZUMAYRA G. CHUA <small>PROVINCIAL ADMINISTRATOR</small>	AS SHOWN	<div style="border: 1px solid black; border-radius: 50%; width: 30px; height: 30px; display: flex; align-items: center; justify-content: center; margin: 0 auto;"> <span style="font-size: 24px; font-weight: bold;">3</span>  <span style="font-size: 24px; font-weight: bold;">9</span> </div>	



**FLOOR PLAN**  
SCALE 1:100m



REPUBLIC OF THE PHILIPPINES  
PROVINCE OF PAMPANGA  
**PROVINCIAL ENGINEER'S OFFICE**  
CAPITOL COMPOUND, CITY OF SAN FERNANDO

PROJECT TITLE:  
IMPROVEMENT OF ROMANA PANGAN DISTRICT HOSPITAL  
LOCATION:  
SAN JOSE, FLORIDABLANCA, PAMPANGA

PREPARED BY:  
*Julie Ann L. Sunlao*  
JULIE ANN L. SUNGLAO  
ENGINEER II  
*Edralin M. Danan*  
EDRALIN M. DANAN  
ENGINEER II

CHECKED AND SUBMITTED BY:  
*Esmeraldo T. Gulapa*  
ESMERALDO T. GULAPA  
ENGINEER IV

VERIFIED AND SUBMITTED BY:  
*Wilfredo A. Manalili*  
WILFREDO A. MANALILI  
ASSISTANT PROVINCIAL ENGINEER

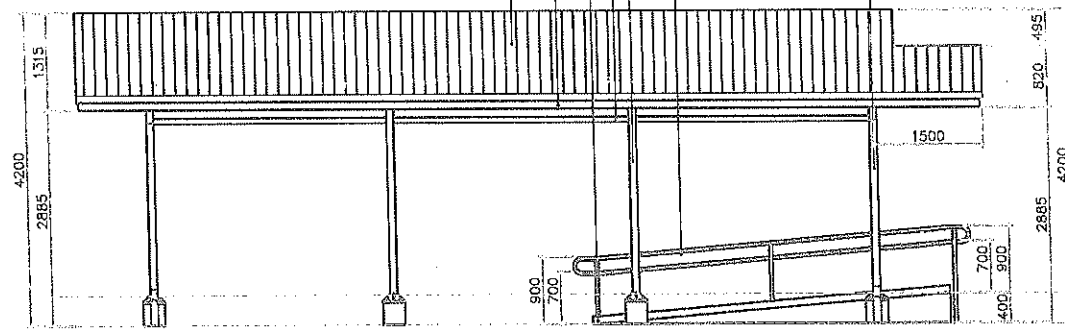
RECOMMENDING APPROVAL:  
*Olimpio M. Panlitan*  
OLIMPIO M. PANLITAN  
PROVINCIAL ENGINEER

APPROVED BY:  
Hon. DENNIS G. PINEDA  
GOVERNOR  
BY THE AUTHORITY OF THE GOVERNOR:  
*Atty. Charito G. Chua*  
ATTY. CHARITO G. CHUA  
OFFICIAL ADMINISTRATOR

SHEET CONTENT:  
AS SHOWN

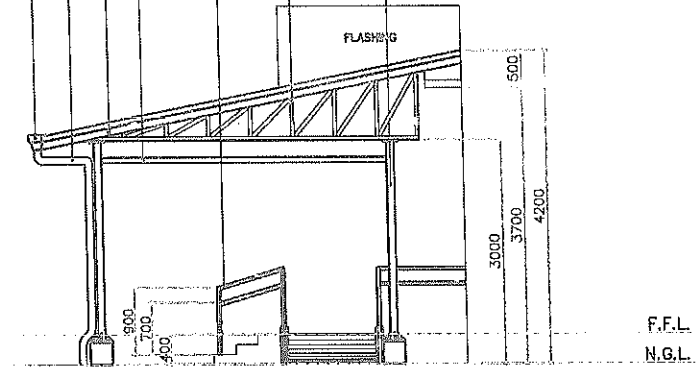
SHEET NO:  
4/9

4"Ø PVC PIPE (DOWNSPOUT)  
 45mmØ STAINLESS STEEL RAILINGS  
 4"Ø G.I. PIPE (SCHED.40)  
 3"Ø G.I. PIPE (SCHED.40)  
 100mm CONCRETE CURB  
 0.50mm THK. STAINLESS STEEL GUTTER with DRAIN  
 0.50mm THK. PRE-PAINTED LONG SPAN RIB-TYPE

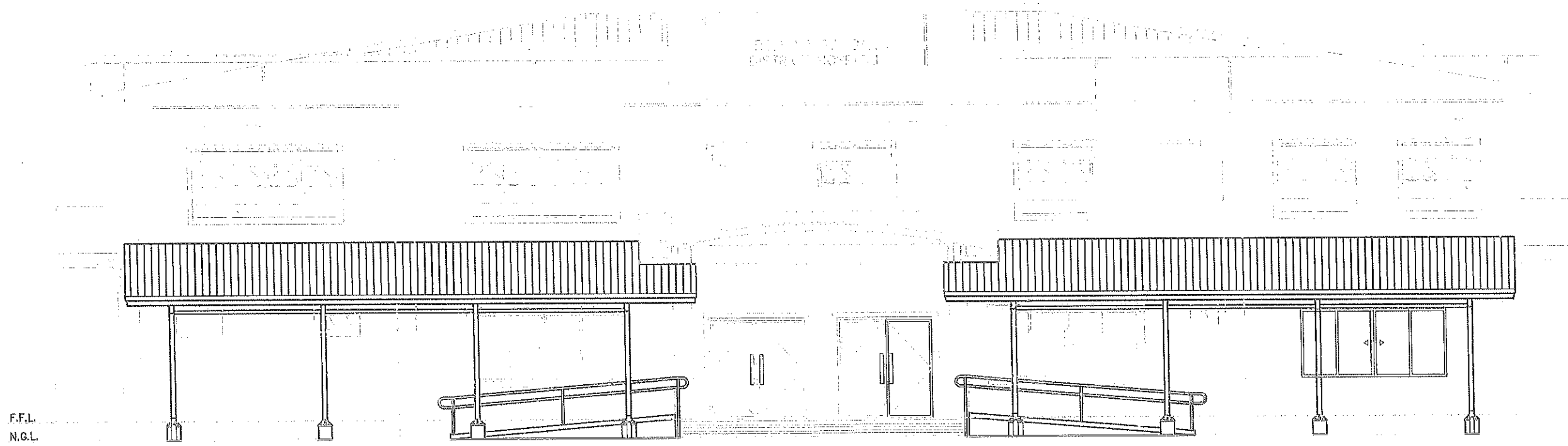


FRONT ELEVATION  
 SCALE 1:100m

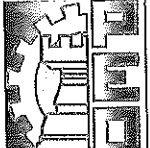
4"Ø G.I. PIPE (SCHED.40)  
 STEEL TRUSS (SEE DETAILS)  
 45mmØ STAINLESS STEEL RAILINGS  
 3"Ø G.I. PIPE (SCHED.40)  
 0.50mm THK. PRE-PAINTED FLASHING  
 4"Ø PVC PIPE (DOWNSPOUT)  
 0.50mm THK. STAINLESS STEEL GUTTER with DRAIN

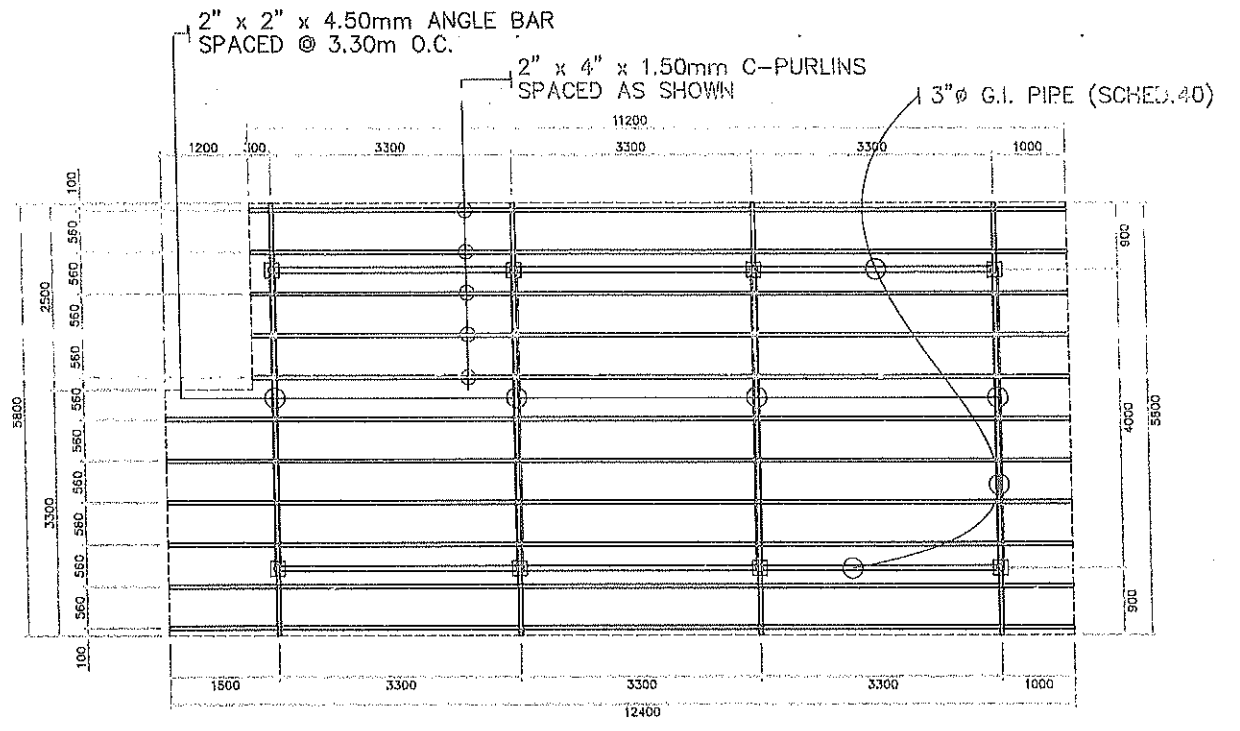
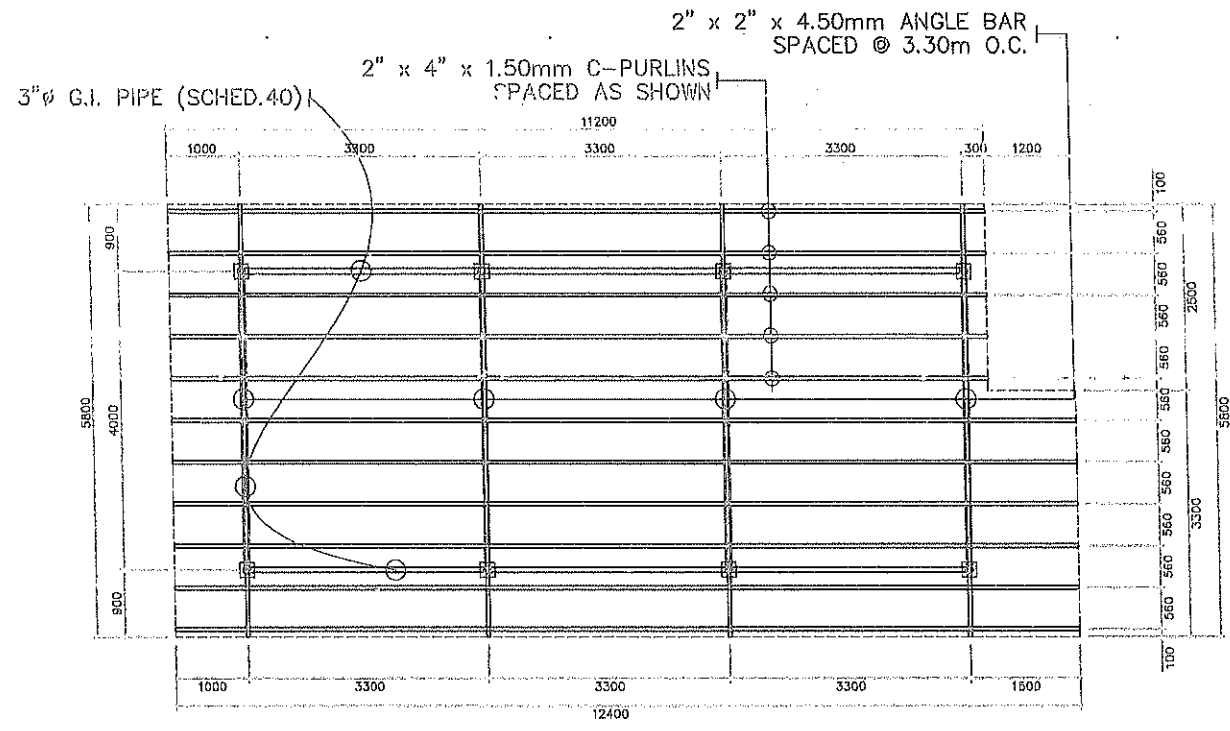


SIDET ELEVATION  
 SCALE 1:100m

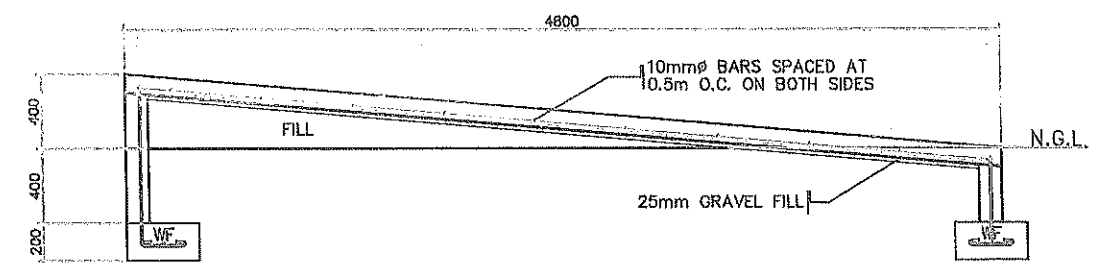
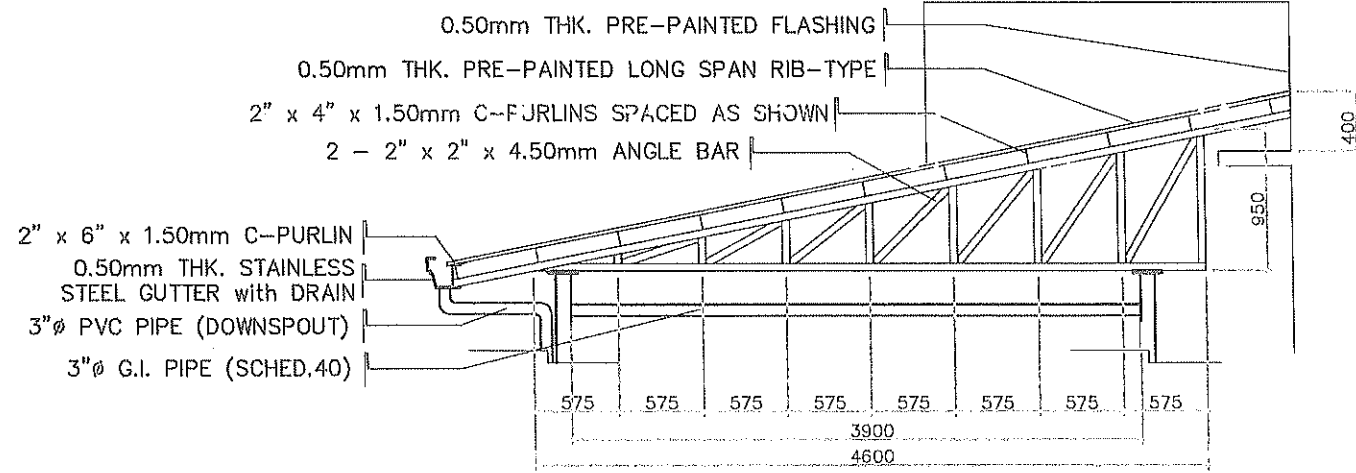


FRONT ELEVATION  
 SCALE 1:100m

	REPUBLIC OF THE PHILIPPINES PROVINCE OF PAMPANGA <b>PROVINCIAL ENGINEER'S OFFICE</b> CAPITOL COMPOUND, CITY OF SAN FERNANDO	PROJECT TITLE: IMPROVEMENT OF ROMANA PANGAN DISTRICT HOSPITAL	PREPARED BY: JULIE ANN L. SUNGLAO ENGINEER II EDRALIN M. DANAN ENGINEER II	CHECKED AND SUBMITTED BY: ESMERALDO T. GULAPA ENGINEER IV	VERIFIED AND SUBMITTED BY: WILFREDO A. MANALILI ASSISTANT PROVINCIAL ENGINEER	RECOMMENDING APPROVAL: OLIMPID M. PANGANAN PROVINCIAL ENGINEER	APPROVED BY: Hon. DEKINIS G. PINEDA GOVERNOR BY THE AUTHORITY OF THE GOVERNOR: KATY CHAMIE G. CHUA PROVINCIAL ADMINISTRATOR	SHEET CONTENT: AS SHOWN	SHEET NO.: 5 9
	LOCATION: SAN JOSE, FLORIDABLANCA, PAMPANGA								

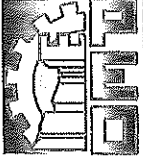


**ROOF FRAMING PLAN**  
SCALE 1:100m

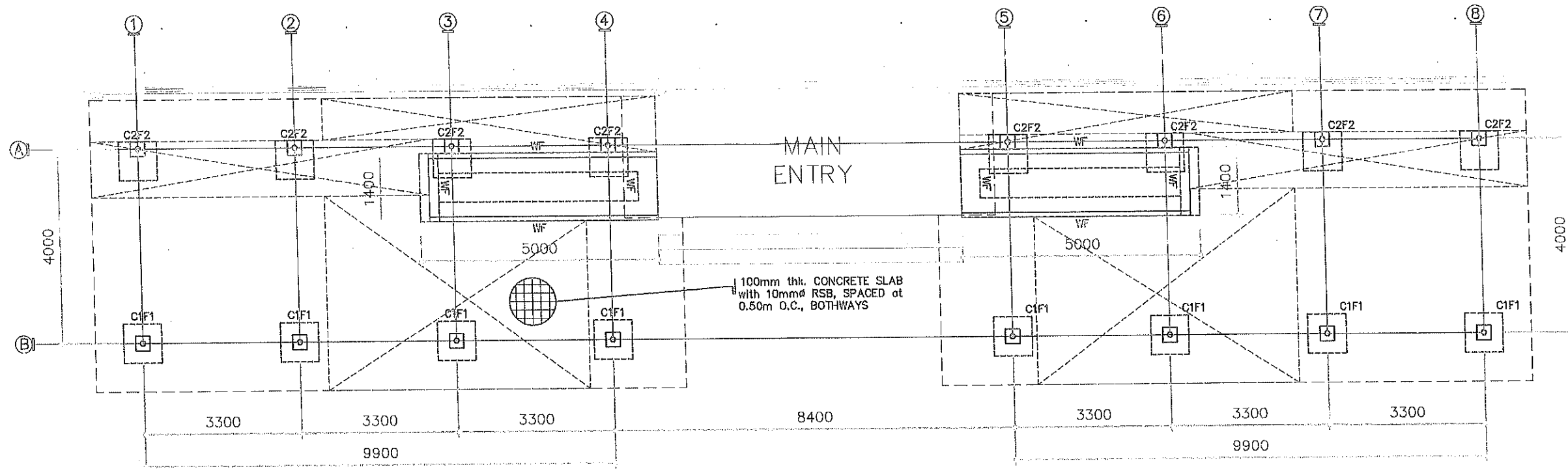


**RAMP DETAILS**  
SCALE 1:40m

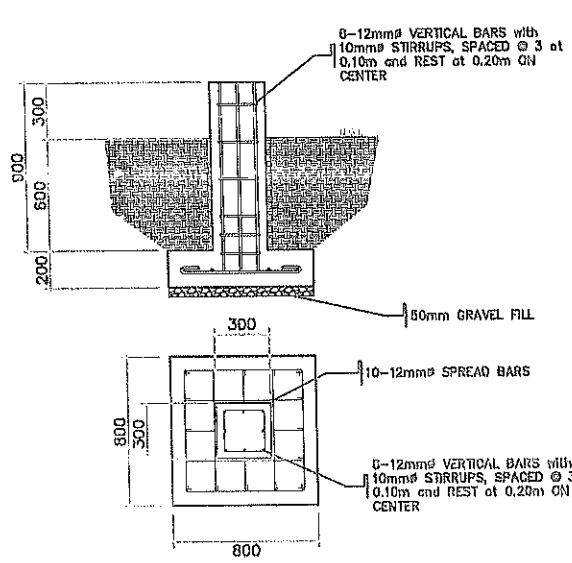
**ROOFING DETAILS**  
SCALE 1:50m

 REPUBLIC OF THE PHILIPPINES PROVINCE OF PAMPANGA <b>PROVINCIAL ENGINEER'S OFFICE</b> CAPITOL COMPOUND, CITY OF SAN FERNANDO	PROJECT TITLE: IMPROVEMENT OF ROMANA PANGAN DISTRICT HOSPITAL	PREPARED BY: JULIE ANN L. SUNGLAO ENGINEER I EFRALIN M. DANAN ENGINEER II	CHECKED AND SUBMITTED BY: ESMERALDO T. GULAPA ENGINEER IV	VERIFIED AND SUBMITTED BY: WILFREDO A. MANALILI ASSISTANT PROVINCIAL ENGINEER	RECOMMENDING APPROVAL: OLIMPIO M. PANJAWAN PROVINCIAL ENGINEER	APPROVED BY: Hon. DENNIS G. PINEDA GOVERNOR BY THE AUTHORITY OF THE GOVERNOR: ATTY. CHARLES S. CHUA PROVINCIAL ADMINISTRATOR	SHEET CONTENT: AS SHOWN	SHEET NO: 6/9
	LOCATION: SAN JOSE, FLORIDABLANCA, PAMPANGA							

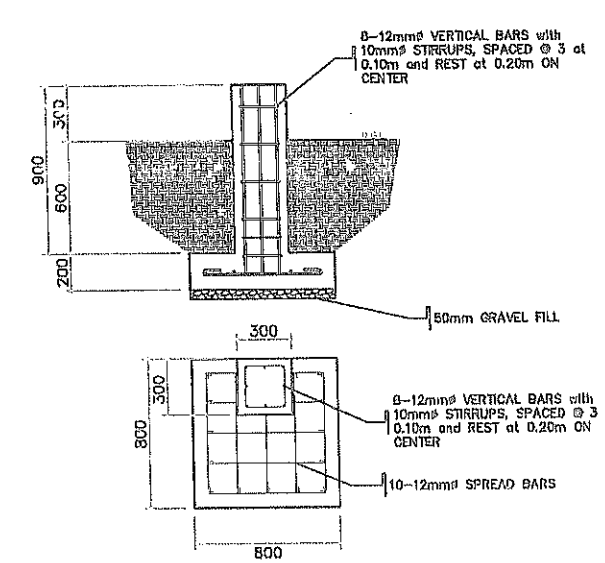




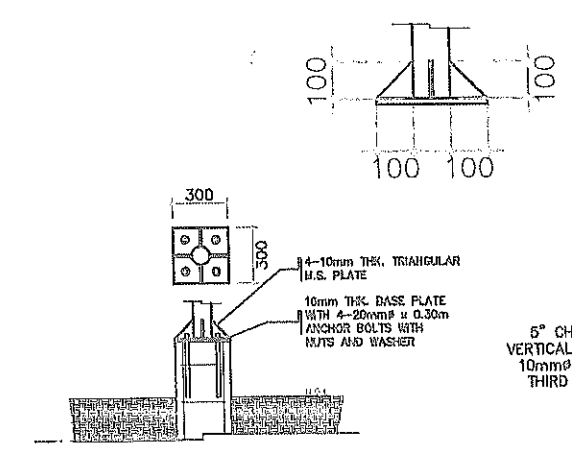
**FOUNDATION PLAN**  
SCALE 1:100m



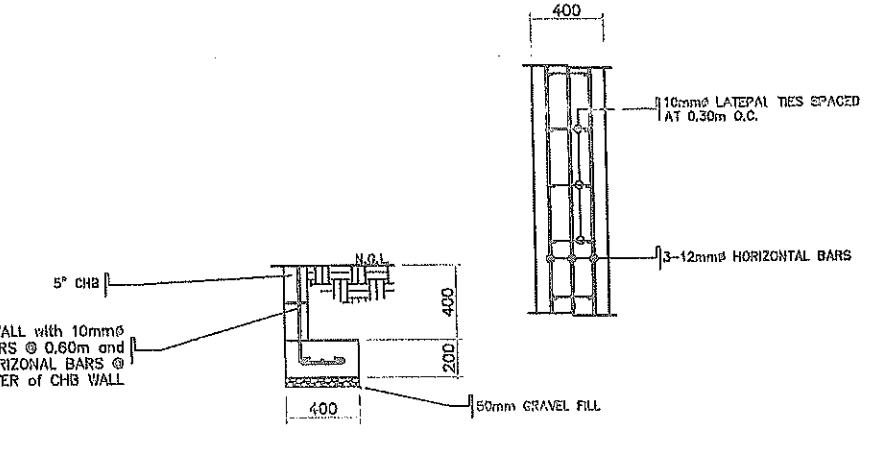
**C1F1 DETAILS**  
SCALE 1:40m



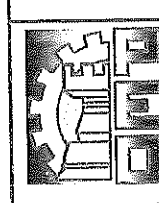
**C2F2 DETAILS**  
SCALE 1:40m



**COLUMN-POST DETAILS**  
SCALE 1:20m



**WALL FOOTING DETAILS**  
SCALE 1:40m



REPUBLIC OF THE PHILIPPINES  
PROVINCE OF PAMPANGA  
**PROVINCIAL ENGINEER'S OFFICE**  
CAPITOL COMPOUND, CITY OF SAN FERNANDO

PROJECT TITLE:  
IMPROVEMENT OF ROMANA PANGAN  
DISTRICT HOSPITAL  
LOCATION:  
SAN JOSE, FLORIDABLANCA, PAMPANGA

PREPARED BY:  
JULIE ANN L. SUNGLAO  
ENGINEER II  
EDRALIN M. DANAN  
ENGINEER II

CHECKED AND SUBMITTED BY:  
ESMERALDO T. GULAPA  
ENGINEER IV

VERIFIED AND SUBMITTED BY:  
WILFREDO A. MANALIL  
ASSISTANT PROVINCIAL ENGINEER

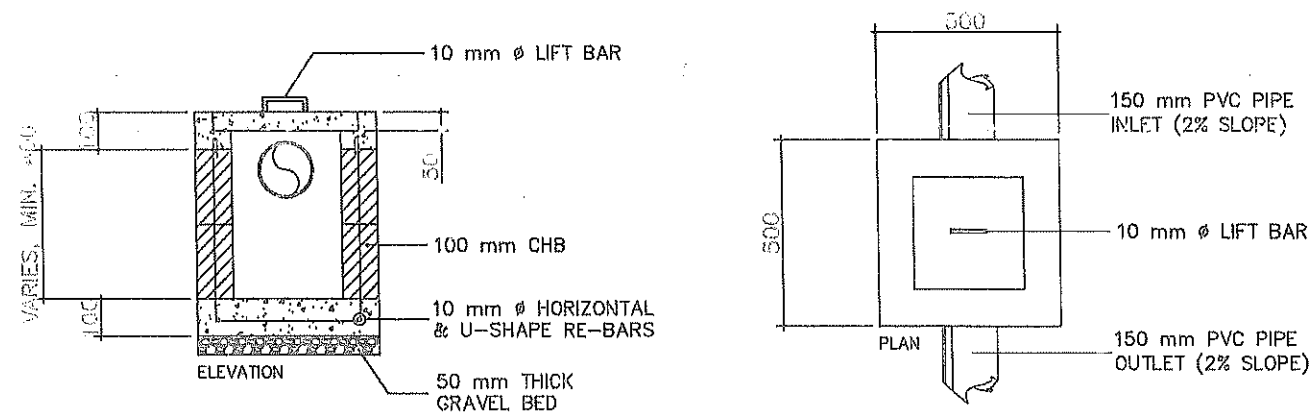
RECOMMENDING APPROVAL:  
OLIMPIO M. PANGAN  
PROVINCIAL ENGINEER

APPROVED BY:  
Hon. DENNIS G. PINEDA  
GOVERNOR  
BY THE AUTHORITY OF THE GOVERNOR:  
ATTY. CHARLES S. CHUA  
PROVINCIAL ADMINISTRATOR

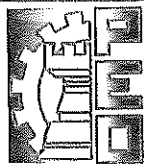
SHEET CONTENT: AS SHOWN  
SHEET NO. 7/9




**STORM DRAINAGE LAYOUT**  
 SCALE \_\_\_\_\_ 1:100m




**CATCH BASIN DETAILS**  
 SCALE \_\_\_\_\_ N.T.S.

 REPUBLIC OF THE PHILIPPINES PROVINCE OF PAMPANGA <b>PROVINCIAL ENGINEER'S OFFICE</b> CAPITOL COMPOUND, CITY OF SAN FERNANDO	PROJECT TITLE:	PREPARED BY:	CHECKED AND SUBMITTED BY:	VERIFIED AND SUBMITTED BY:	RECOMMENDING APPROVAL:	APPROVED BY:	SHEET CONTENT:	SHEET NO.:
	IMPROVEMENT OF ROMANA PANGAN DISTRICT HOSPITAL	JULIE ANN L. SUNGLAO ENGINEER II	<i>[Signature]</i>	<i>[Signature]</i>	<i>[Signature]</i>	Hon. DENNIS G. PINEDA GOVERNOR	AS SHOWN	8
	LOCATION: SAN JOSE, FLORIDABLANCA, PAMPANGA	EDRALIN M. DANAN ENGINEER II	ESMERALDO T. GULAPA ENGINEER IV	WILFREDO A. MANALILI ASSTANT PROVINCIAL ENGINEER	OLMPIO M. PAMPANI PROVINCIAL ENGINEER II	BY THE AUTHORITY OF THE GOVERNOR: ATTY. CHARLES G. CHUA PROVINCIAL ADMINISTRATOR	9	



### LOAD CALCULATION

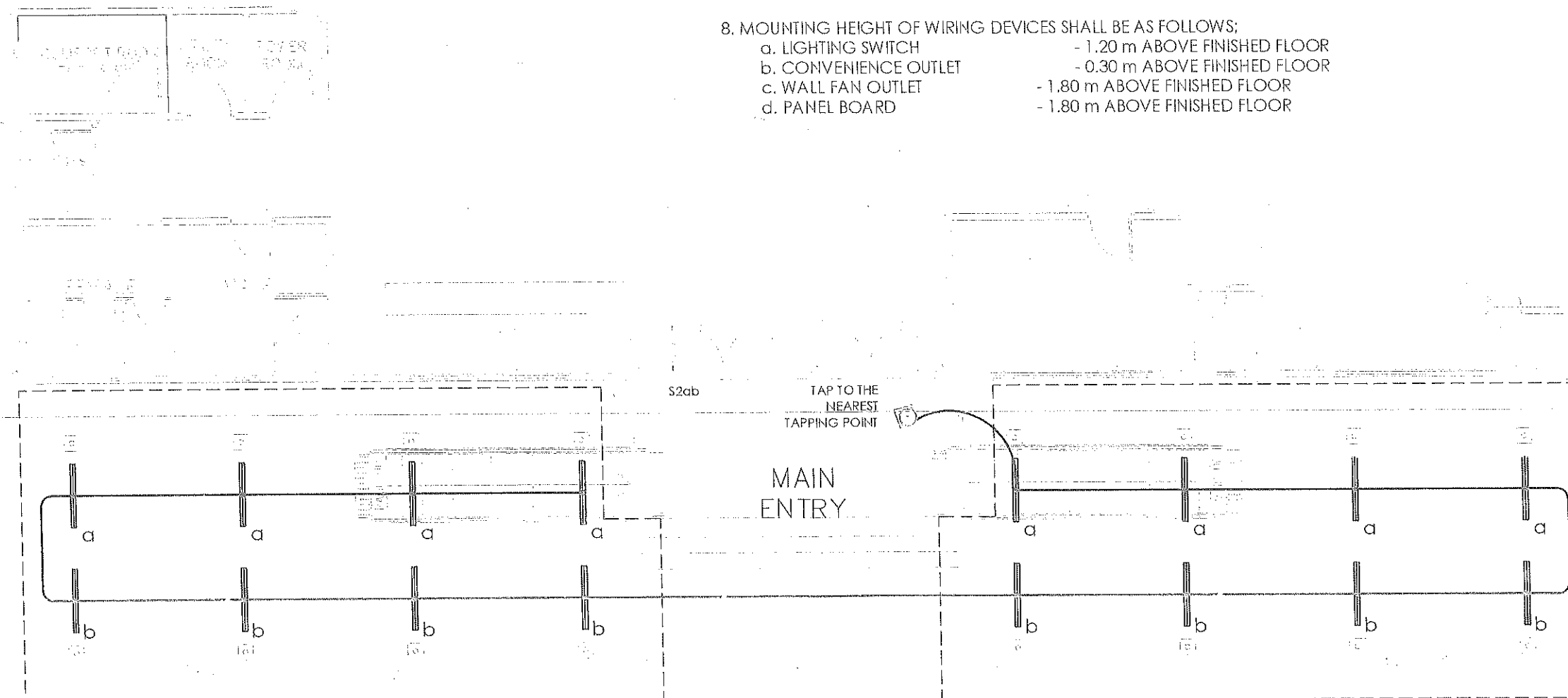
PANEL NAME:		LIGHT. LG LOAD CALCULATION							
FEED FROM : (TAP TO THE NEAREST TAPPING POINT)									
SYSTEM : 230V, 1Ø, 2-WIRE + GROUND, 60HZ									
CKT. NO.	DESCRIPTION	CONNECTED LOAD			OVER CURRENT PROTECTION				SIZE OF WIRE AND PVC CONDUITS
		V	VA	A	AT	AF	P	KA	
1	16-1 x 18W LED, T8 DUSTPROOF & WEATHERPROOF LINEAR LAMPS	230	288	1.25	20	50	2	10	2-3.5mm <sup>2</sup> THHN/THWN-2 LINE IN 20 mm DIA. PVC CONDUIT or 15mm dia. EMT Conduit
TOTAL CONNECTED LOAD :		230	288	1.25					

### LEGEND:

	WEATHERPROOF, DUPLEX CONVENIENCE OUTLET
	PANELBOARD
	HOME RUN
	TWO GANG SINGLE POLE SWITCH
	1 x 18W LED, T8 DUSTPROOF & WEATHERPROOF LINEAR LAMPS

### GENERAL NOTES:

- ALL ELECTRICAL WORKS SHALL COMPLY IN ACCORDANCE WITH THESE PLANS AND SPECIFICATIONS. THE APPLICABLE PROVISIONS OF THE LATEST EDITION OF THE PHILIPPINE ELECTRICAL CODE (PEC), THE RULES AND REGULATIONS OF THE LOCAL ENFORCING AUTHORITY AND THE REQUIREMENTS OF THE LOCAL POWER COMPANY. THE ELECTRICAL WORKS SHALL BE UNDER IMMEDIATE SUPERVISION OF A DULY REGISTERED ELECTRICAL ENGINEER.
- THE ELECTRICAL SERVICE POWER IS 1-PHASE, 2-WIRE + 1-GROUND, 230V AC, 60Hz.
- WIRING METHOD SHALL BE AS FOLLOWS:
  - FEEDERS AND RISERS - INTERMEDIATE METALLIC CONDUIT
  - LIGHTING POWER RECEPTACLE - POLYVINYL CHLORIDE CONDUIT BRANCH CKT. & AUXILIARY, SCH. 40.
- ALL WIRES SHALL BE COPPER AND THERMOPLASTIC INSULATED TYPE "THHN" UNLESS OTHERWISE INDICATED IN THE PLAN. THE MINIMUM SIZE OF WIRE FOR POWER AND LIGHTING CIRCUIT HOMERUN SHALL BE 3.5mm<sup>2</sup> AND INSULATED FOR 600 VOLTS. SMALLEST RACEWAY SHALL BE 15mmØ TRADE/NORMAL SIZE.
- ALL OUTLET BOXES SHALL BE GALVANIZED GAGE NO. 16 DEEP TYPE WITH FACTORY KNOCKOUTS.
- ALL MATERIALS TO BE USED SHALL BE BRAND NEW AND APPROVED TYPE FOR THE PARTICULAR LOCATION AND PURPOSE OF USAGE.
- GROUNDING SYSTEM SHALL BE PROVIDED TO ALL LIGHTING AND POWER CIRCUIT AS PER PHILIPPINE ELECTRICAL CODE REQUIREMENT.
- MOUNTING HEIGHT OF WIRING DEVICES SHALL BE AS FOLLOWS:
  - LIGHTING SWITCH - 1.20 m ABOVE FINISHED FLOOR
  - CONVENIENCE OUTLET - 0.30 m ABOVE FINISHED FLOOR
  - WALL FAN OUTLET - 1.80 m ABOVE FINISHED FLOOR
  - PANEL BOARD - 1.80 m ABOVE FINISHED FLOOR



**LIGHTING LAYOUT**  
SCALE 1:100m

 REPUBLIC OF THE PHILIPPINES PROVINCE OF PAMPANGA <b>PROVINCIAL ENGINEER'S OFFICE</b> CAPITOL COMPOUND, CITY OF SAN FERNANDO	PROJECT TITLE:	PREPARED BY:	CHECKED AND SUBMITTED BY:	VERIFIED AND SUBMITTED BY:	RECOMMENDING APPROVAL:	APPROVED BY:	SHEET CONTENT:	SHEET NO.:
	IMPROVEMENT OF ROMANA PANGAN DISTRICT HOSPITAL	EDRALIN M. DANAN ENGINEER II	ESMERALDO T. GULAPA ENGINEER IV	WILFREDO A. MANALILI ASSISTANT PROVINCIAL ENGINEER	OLIMPIO M. PANGAN PROVINCIAL ENGINEER	Hon. DENNIS G. PINEDA GOVERNOR BY THE AUTHORITY OF THE GOVERNOR: ATTY. CHARLIE S. CHUA PROVINCIAL ADMINISTRATOR	AS SHOWN	9/9
	LOCATION:	CAD BY:						
	SAN JOSE, FLORIDABLANCA, PAMPANGA	SISELLE E. JUAN						