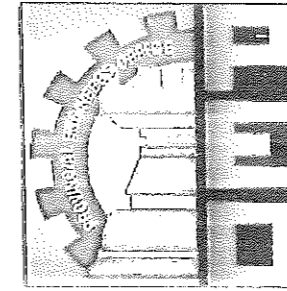
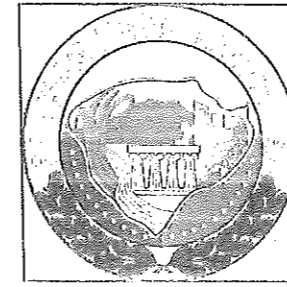
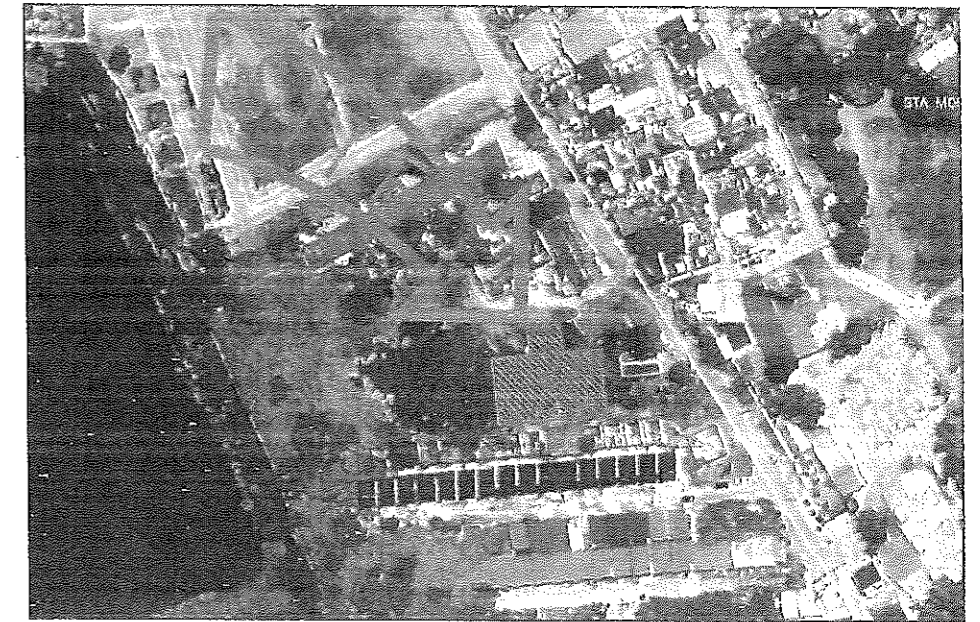


REPUBLIC OF THE PHILIPPINES
PROVINCE OF PAMPANGA



PROVINCIAL ENGINEER'S OFFICE

CAPITOL COMPOUND, CITY OF SAN FERNANDO, PAMPANGA

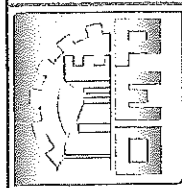
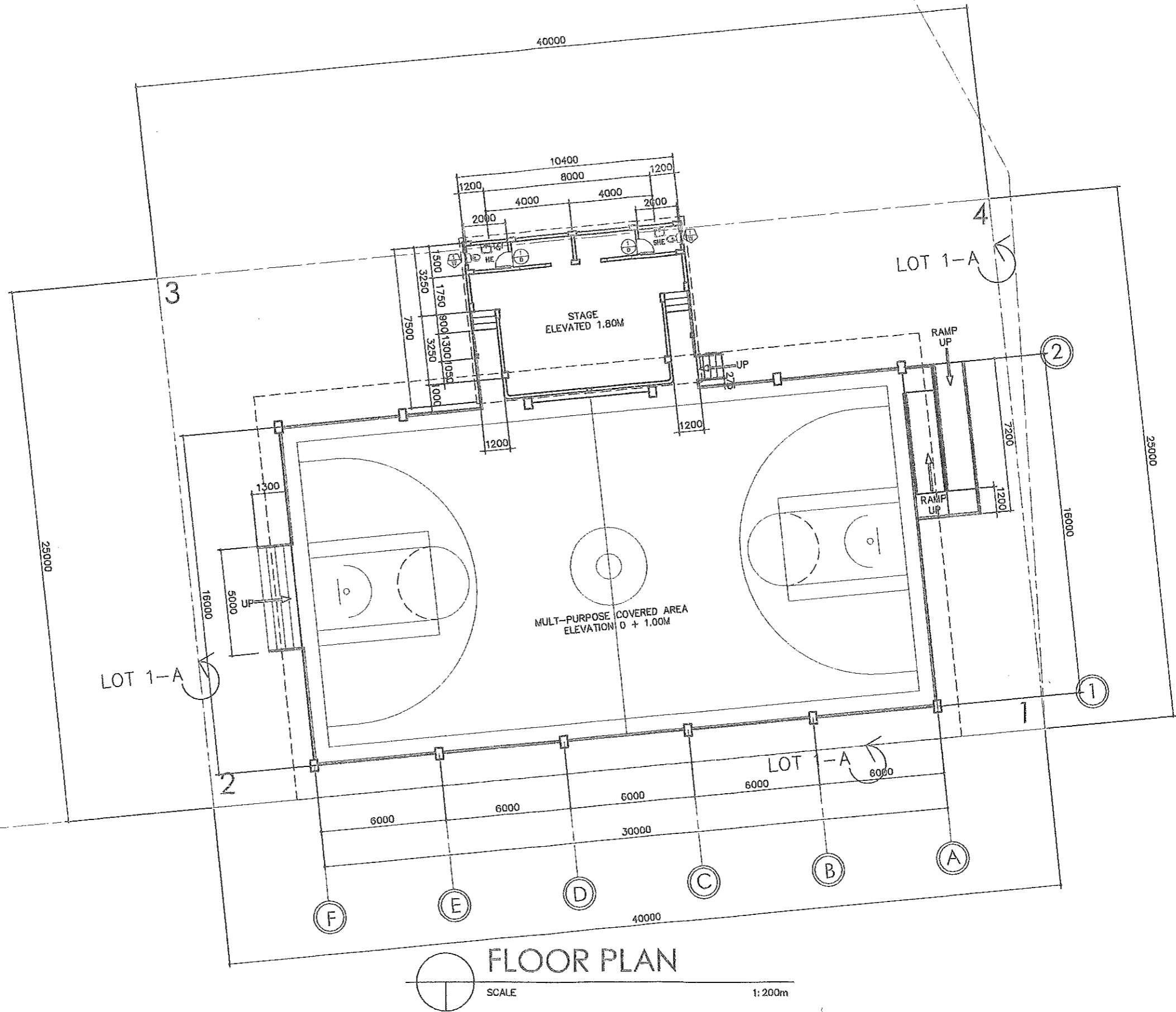


VICINITY MAP
SCALE: NTS.

PERSPECTIVE

CONSTRUCTION OF MULTI-PURPOSE COVERED AREA

LOCATION: SAN ANTONIO, SASMUAN, PAMPANGA



FROM THE OFFICE OF:
 REPUBLIC OF THE PHILIPPINES
 PROVINCE OF PAMPANGA
PROVINCIAL ENGINEER'S OFFICE
 CAPITOL COMPOUND, CITY OF SAN FERNANDO, (P)

PROJECT TITLE:
**CONSTRUCTION OF MULTI-PURPOSE
 COVERED AREA**
 LOCATION: SAN ANTONIO, SASMUAN, PAMPANGA

PREPARED BY:

 MYLWARD Y. LAXA
 ENGINEERING ASSISTANT IV

CHECKED BY:

 ESMERALDO T. GULAPA
 ENGINEER IV

VERIFIED BY:

 WILFREDO A. MANALILI
 ASSISTANT PROV'L ENGINEER

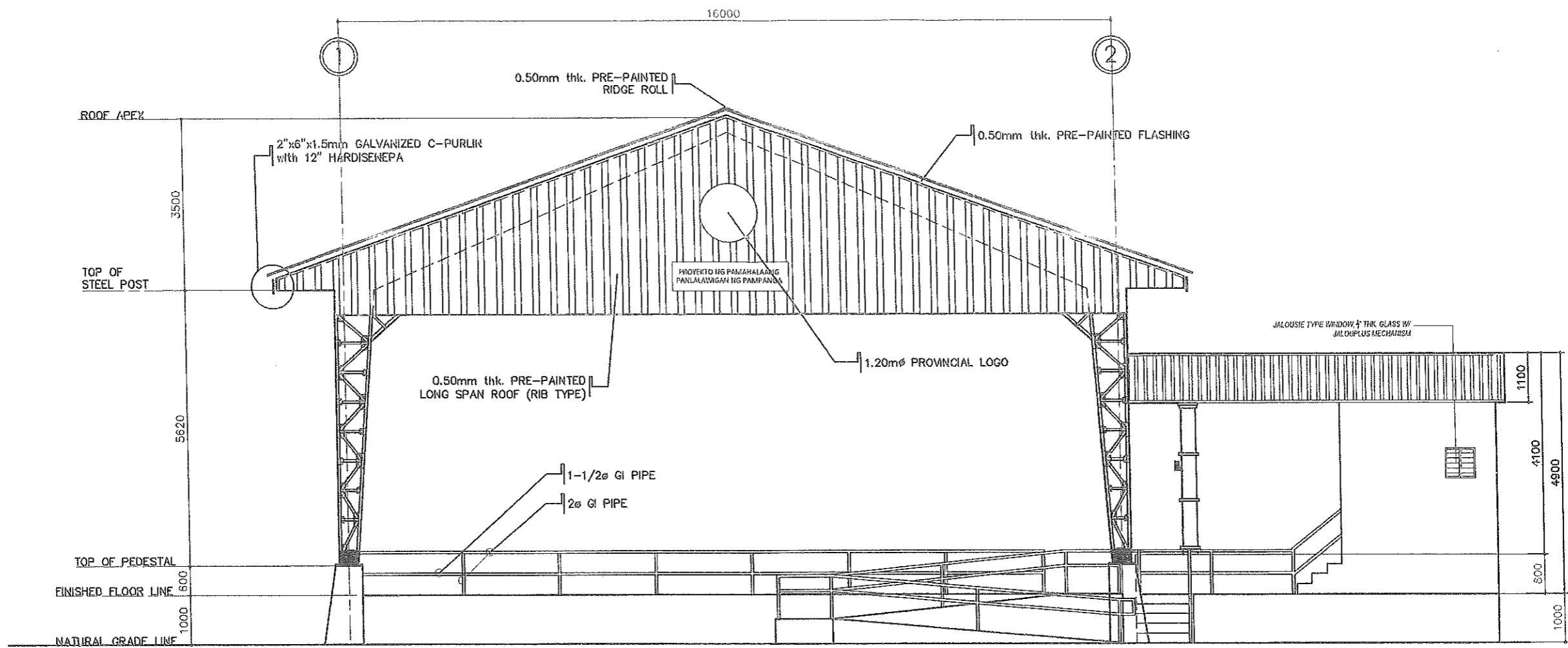
RECOMMENDING APPROVAL:

 OLIMIO M. PANGAN
 PROVINCIAL ENGINEER

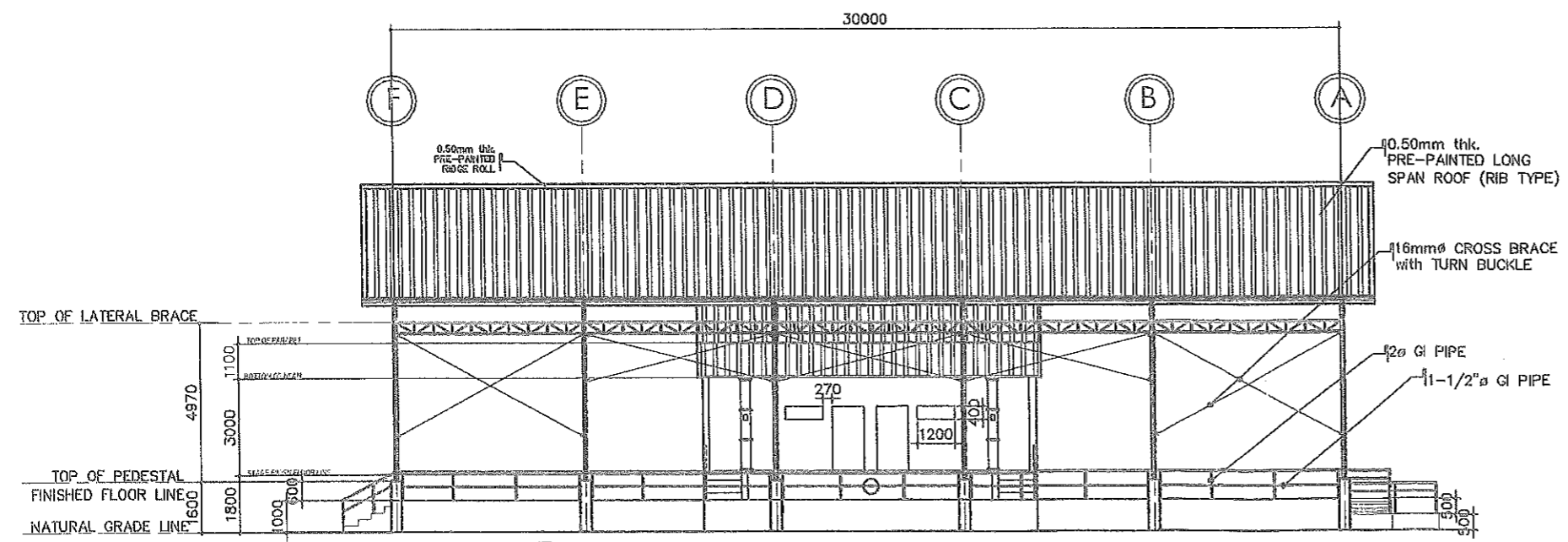
APPROVED BY:
 HON. DENNIS G. PINEDA
 GOVERNOR
 BY THE AUTHORITY OF THE GOVERNOR

 CHARLIE G. CHUA
 PROVINCIAL ADMINISTRATOR

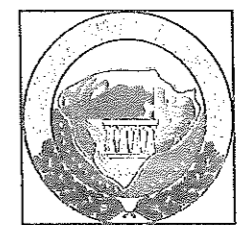
SHEET CONTENT: AS SHOWN
 SHEET No: **A1**
 2-12



FRONT ELEVATION
 SCALE 1:100m



LEFT SIDE ELEVATION
 SCALE 1:200m

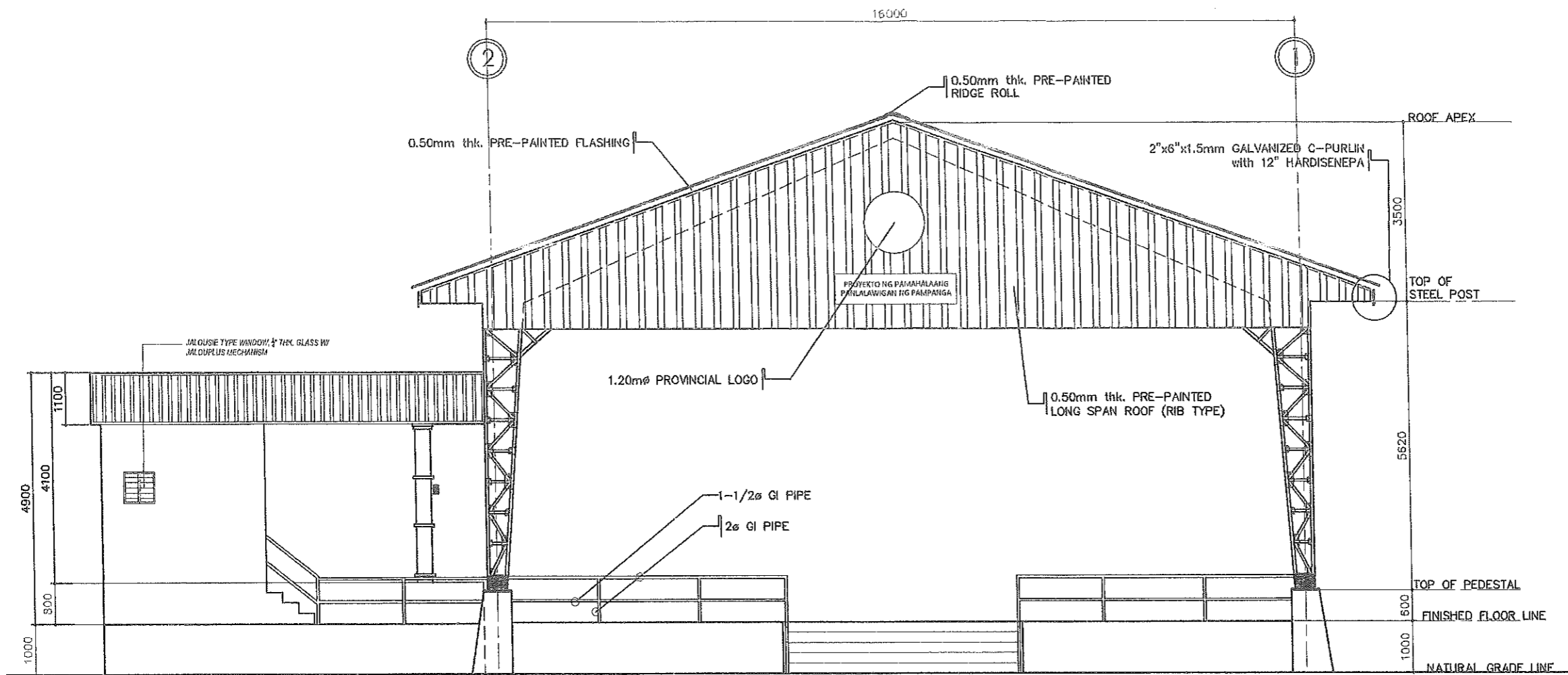


1.20m \varnothing PROVINCIAL LOGO

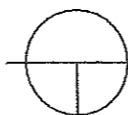
PRE-PAINTED G.I. SHEET
**PROYECTO NG PAMAHALAANG
 PANLALAWIGAN NG PAMPANGA**
 10" LETTERING (WHITE)

PROVINCIAL LOGO
 SCALE NTS

| | | | | | | | | | | |
|--|--|--|---|--|---|---|---|---|------------|-----------------------|
| | FROM THE OFFICE OF: | PROJECT TITLE: | PREPARED BY: | CHECKED BY: | VERIFIED BY: | RECOMMENDING APPROVAL: | APPROVED BY: | SHEET CONTENT: | SHEET No.: | |
| | REPUBLIC OF THE PHILIPPINES PROVINCE OF PAMPANGA PROVINCIAL ENGINEER'S OFFICE | CONSTRUCTION OF MULTI-PURPOSE COVERED AREA | MYNARD Y. LAXA ENGINEERING ASSISTANT | ESMERALDO T. GULAPA ENGINEER IV | WILFREDO A. MANALILI ASSISTANT PROV'L ENGINEER | OLIMPIO M. PANGSAN PROVINCIAL ENGINEER | HON. DENNIS G. PINEDA GOVERNOR BY THE AUTHORITY OF THE GOVERNOR | REMY CHARLENE G. CHUA PROVINCIAL ADMINISTRATOR | AS SHOWN | A2 3-12 |
| | CAPITOL COMPOUND, CITY OF SAN FERNANDO, (P) | LOCATION: SAN ANTONIO, SASMUAN, PAMPANGA | | | | | | | | |

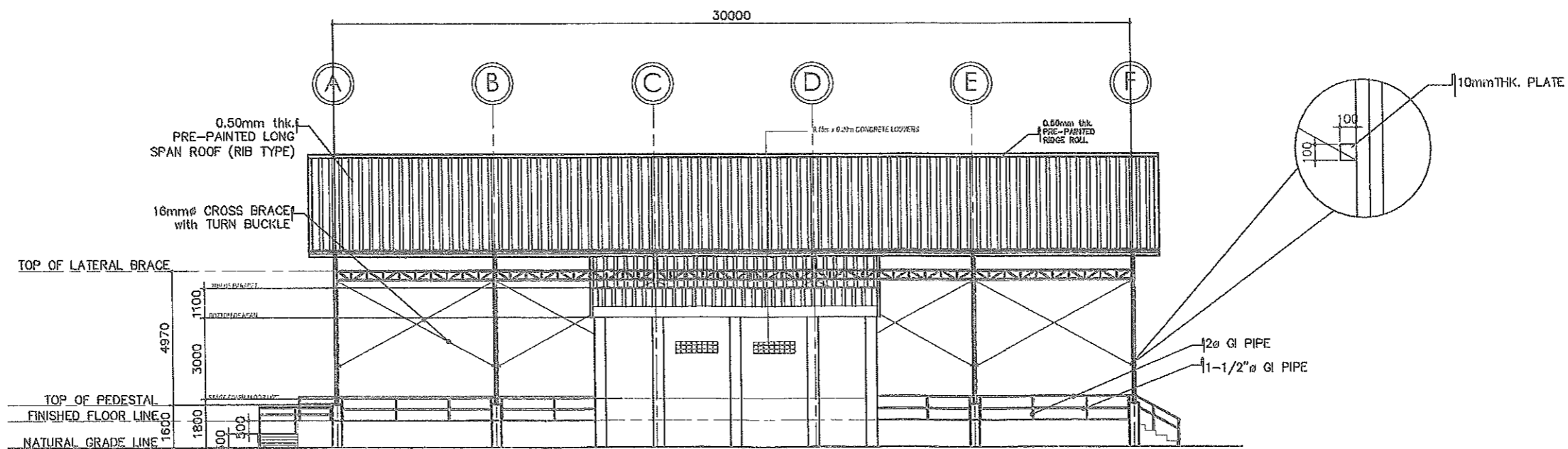


REAR ELEVATION

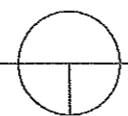


SCALE

1:100m



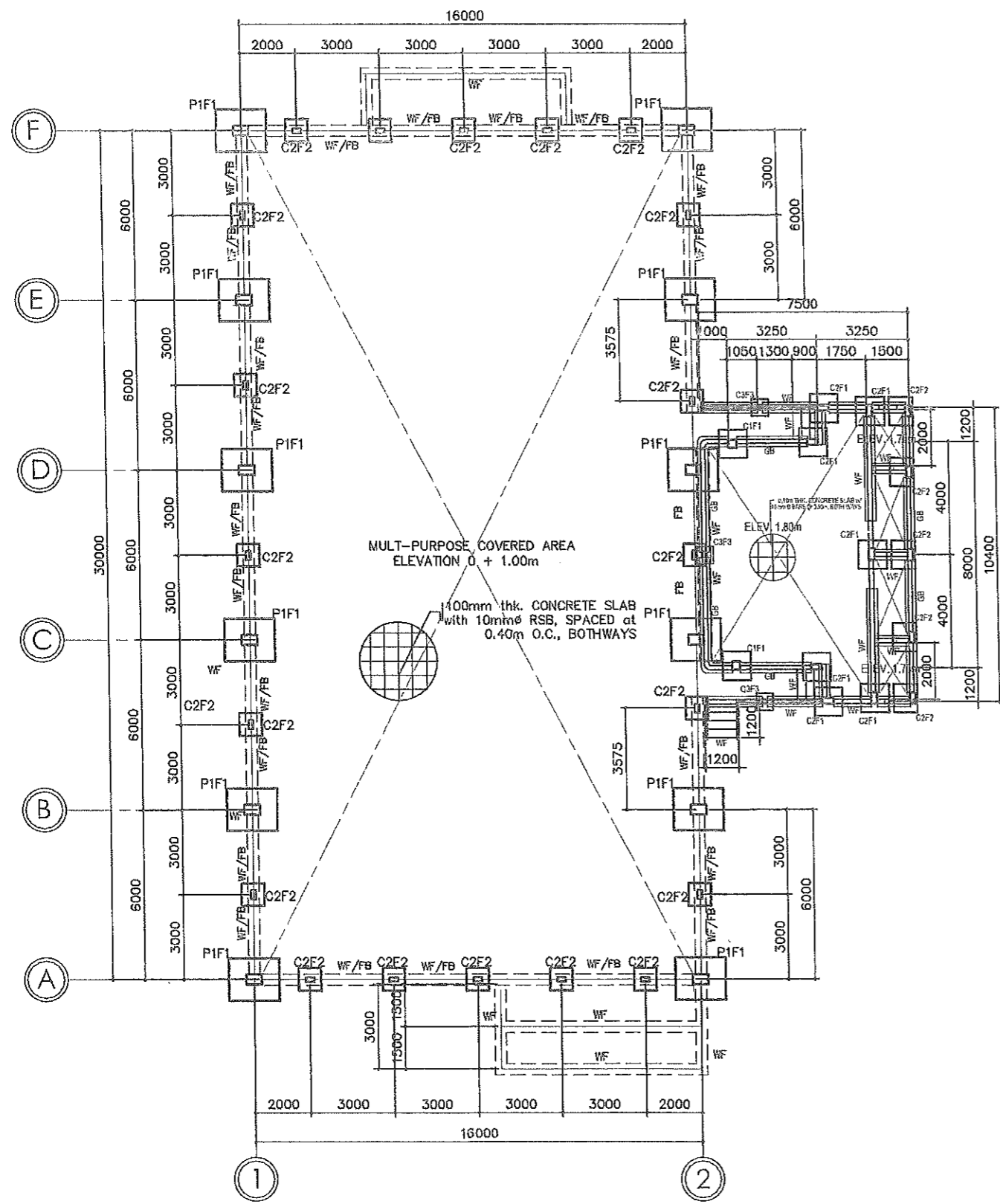
RIGHT SIDE ELEVATION



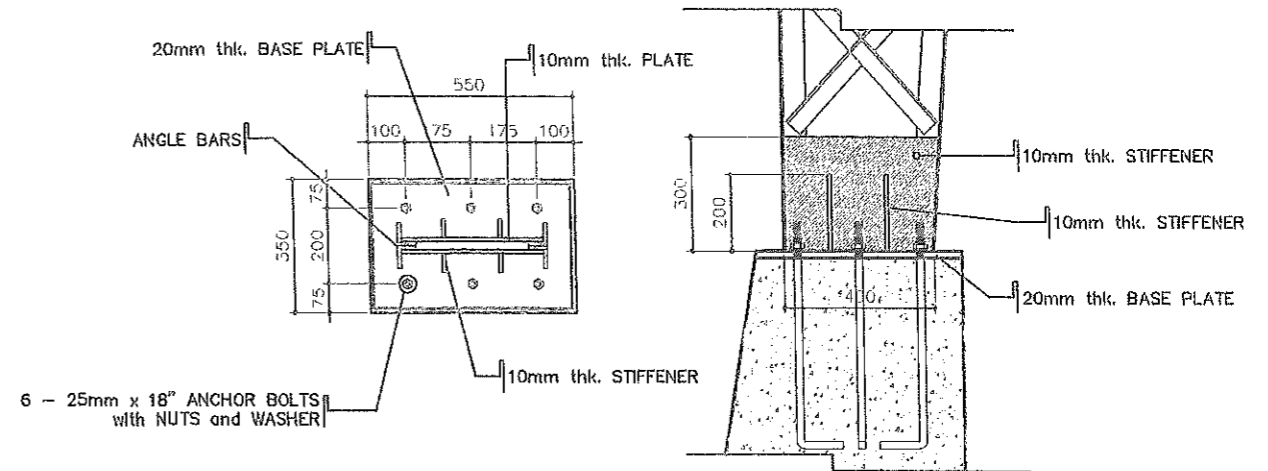
SCALE

1:200m

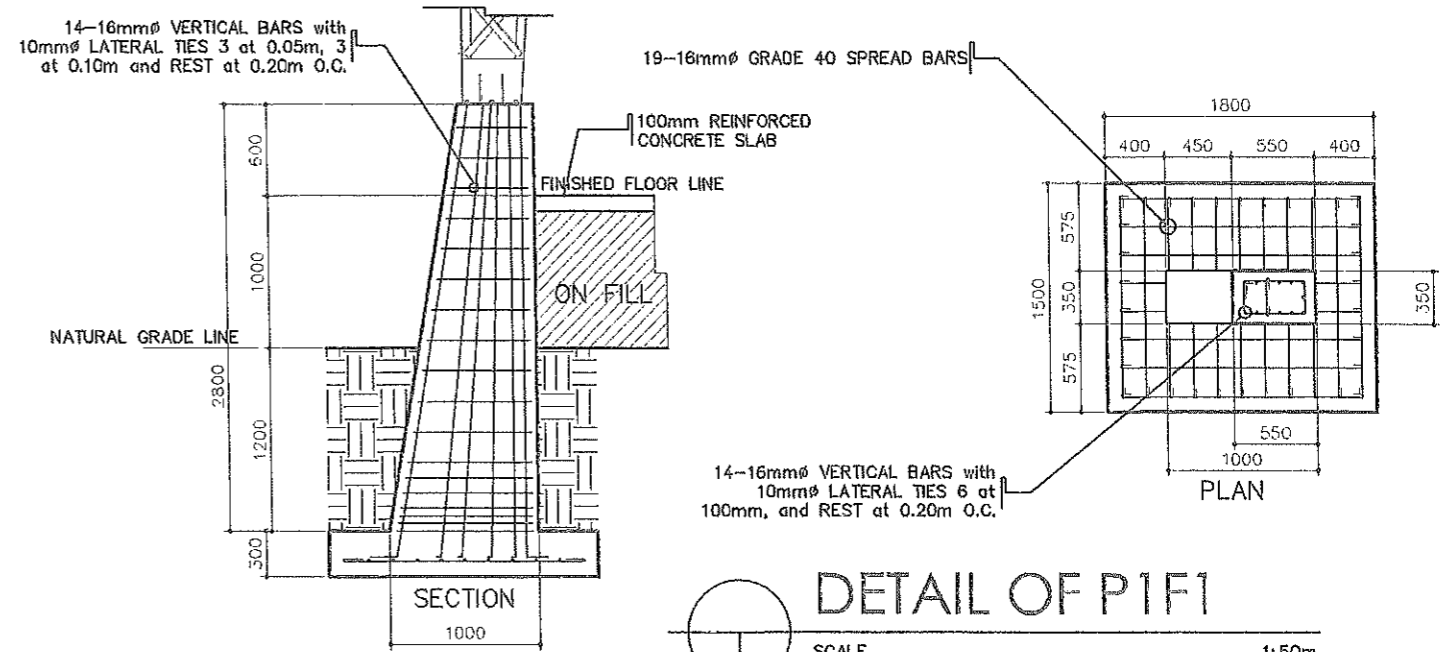
| | | | | | | | | | |
|--|---|---|--|--|--|--|--|----------------|-----------------------|
| | FROM THE OFFICE OF: | PROJECT TITLE: | PREPARED BY: | CHECKED BY: | VERIFIED BY: | RECOMMENDING APPROVAL: | APPROVED BY: | SHEET CONTENT: | SHEET No.: |
| | REPUBLIC OF THE PHILIPPINES PROVINCE OF PAMPANGA PROVINCIAL ENGINEER'S OFFICE CAPITOL COMPOUND, CITY OF SAN FERNANDO, (P) | CONSTRUCTION OF MULTI-PURPOSE COVERED AREA LOCATION: SAN ANTONIO, SASMUAN, PAMPANGA | WEYNARD Y. LAXA ENGINEERING ASSISTANT | ESMERALDO T. GULAPA ENGINEER IV | WILEFRIDO A. MANALILI ASSISTANT PROV'L ENGINEER | OLIMPIO M. PANGAN PROVINCIAL ENGINEER | HON. DENNIS G. PINEDA GOVERNOR BY THE AUTHORITY OF THE GOVERNOR ATTY. CHARLIE G. CHUA PROVINCIAL ADMINISTRATOR | AS SHOWN | A3 4-12 |
| | | | | | | | | | |



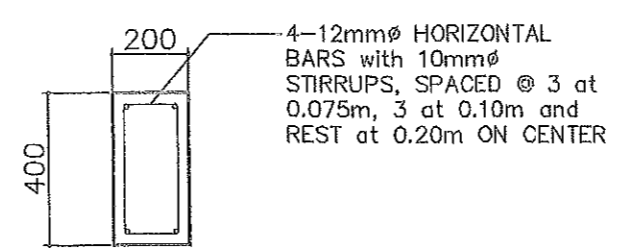
FOUNDATION PLAN
SCALE 1:200m



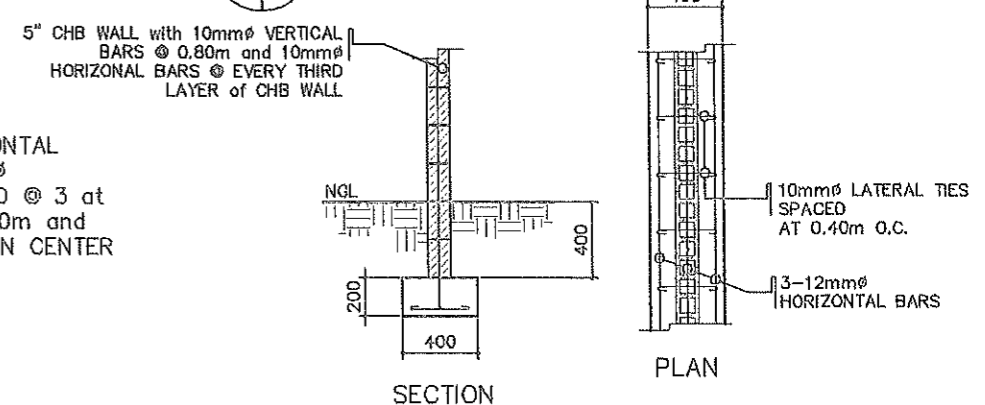
DETAIL CONNECTION OF BASE PLATE
SCALE 1:20m



DETAIL OF P1F1
SCALE 1:50m

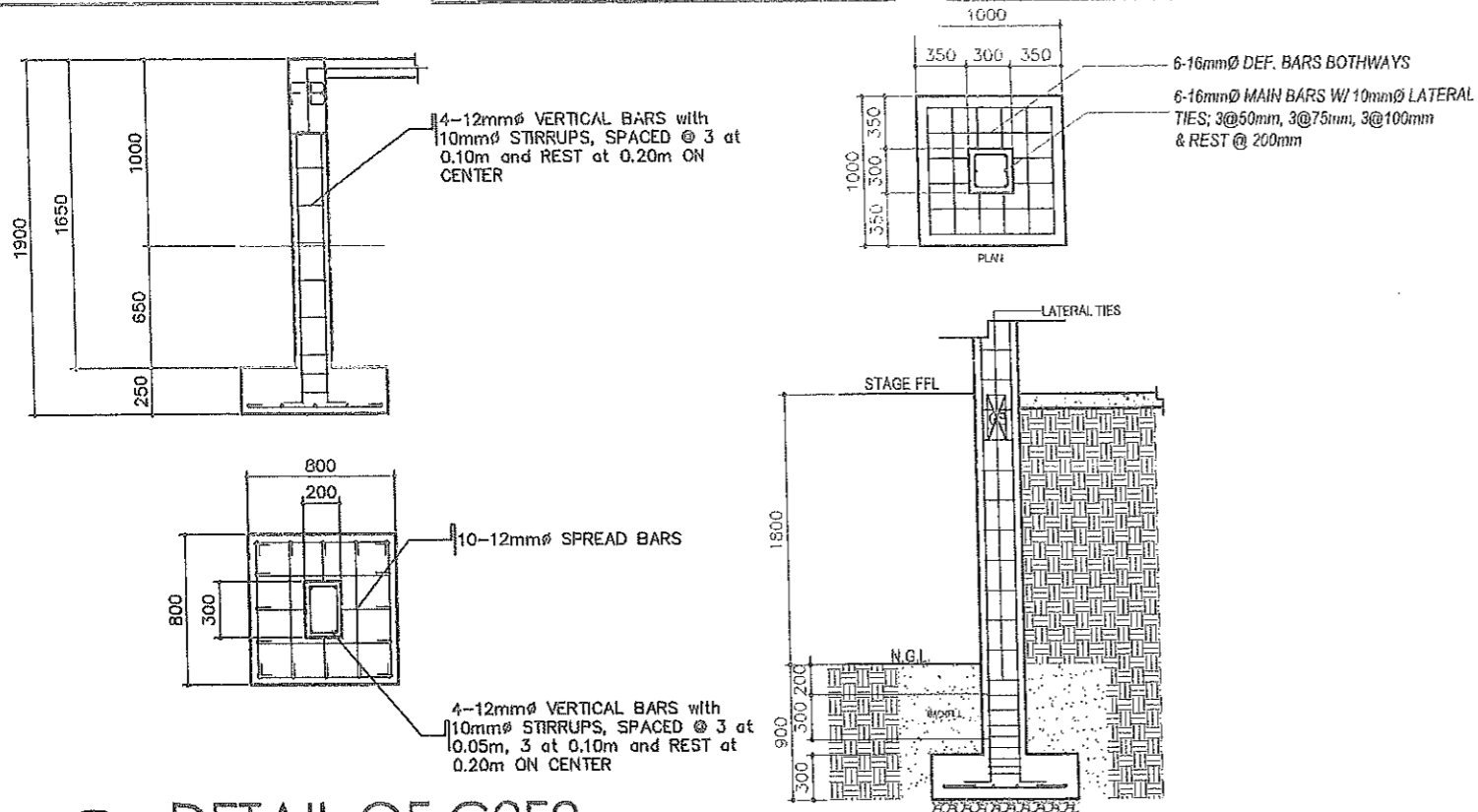


DETAIL OF FLOOR BEAM
SCALE 1:20m



WALL FOOTING DETAILS
SCALE 1:40m

| | | | | | | | | | |
|--|---|--|--|--|---|--|--|----------------|-----------------------|
| | FROM THE OFFICE OF: | PROJECT TITLE: | PREPARED BY: | CHECKED BY: | VERIFIED BY: | RECOMMENDING APPROVAL: | APPROVED BY: | SHEET CONTENT: | SHEET No.: |
| | REPUBLIC OF THE PHILIPPINES PROVINCE OF PAMPANGA PROVINCIAL ENGINEER'S OFFICE CAPITOL COMPOUND, CITY OF SAN FERNANDO, (P) | CONSTRUCTION OF MULTI-PURPOSE COVERED AREA LOCATION: SAN ANTONIO, SASMUJAN, PAMPANGA | REYNARD Y. LAXA ENGINEERING ASSISTANT | ESMERALDO T. GULAPA ENGINEER IV | WILFREDO A. MANALILI ASSISTANT PROV'L ENGINEER | OLIMPIO M. PANGAN PROVINCIAL ENGINEER | HON. DENNIS G. PINEDA GOVERNOR BY THE AUTHORITY OF THE GOVERNOR ATTY. CHARLIE G. CHUA PROVINCIAL ADMINISTRATOR | AS SHOWN | S1 5-12 |
| | | | | | | | | | |



SCHEDULE OF COLUMNS FOR STAGE

| MARK | SIZE (mm) | | REINFORCEMENT (USE GRADE 33) | |
|------|-----------|-----|------------------------------|---|
| | B | D | MAIN BARS (USE GRADE 33) | |
| C-1 | 300 | 300 | 6 - 16mm \varnothing | 3@50mm; 3@75mm; 3@100mm; REST @ 200mm. O.C. |
| C-2 | 200 | 400 | 6 - 16mm \varnothing | 3@50mm; 3@75mm; 3@100mm; REST @ 200mm. O.C. |
| C-3 | 150 | 200 | 4 - 12mm \varnothing | 2@50mm; 2@100mm; REST @ 200mm. O.C. |

SCHEDULE OF FOOTINGS FOR STAGE

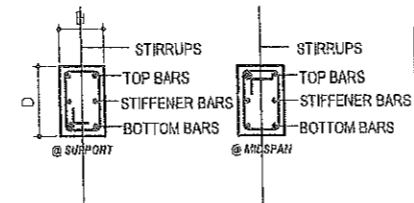
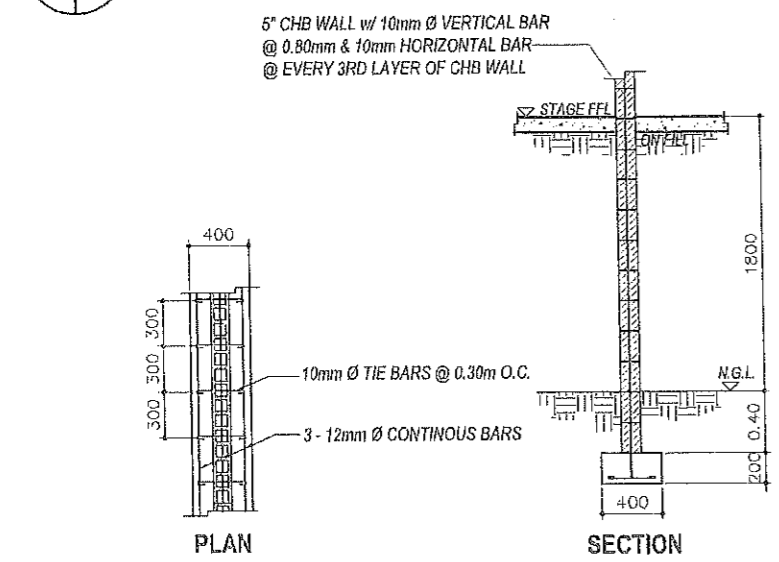
| MARK | DIMENSION (mm) | | | REINFORCEMENT (USE GRADE 33) |
|------|----------------|------|------|--|
| | W | L | THK. | |
| F1 | 1000 | 1000 | 300 | 6 - 16mm \varnothing BARS ; BOTHWAYS |
| F2 | 1000 | 800 | 250 | 5 - 12mm \varnothing BARS ; BOTHWAYS |
| F3 | 600 | 600 | 250 | 5 - 12mm \varnothing BARS ; BOTHWAYS |

SCHEDULE OF BEAMS

| MARK | DIMENSIONS | | | REINFORCEMENT | | | | | |
|------|------------|-----|------|---------------|--------|-----------|--------|----------------|-------------------------------------|
| | SIZE (mm) | | THK. | @ SUPPORT | | @ MIDSPAN | | STIFFENER BARS | |
| | B | D | | TOP | BOTTOM | TOP | BOTTOM | | |
| RB | 200 | 400 | 12 | 2 | 2 | 2 | 2 | 2 | 2@50mm; 4@100mm; REST @ 200mm. O.C. |
| GB | 150 | 300 | 12 | 2 | 2 | 2 | 2 | | 3@50mm; 3@100mm; REST @ 200mm. O.C. |

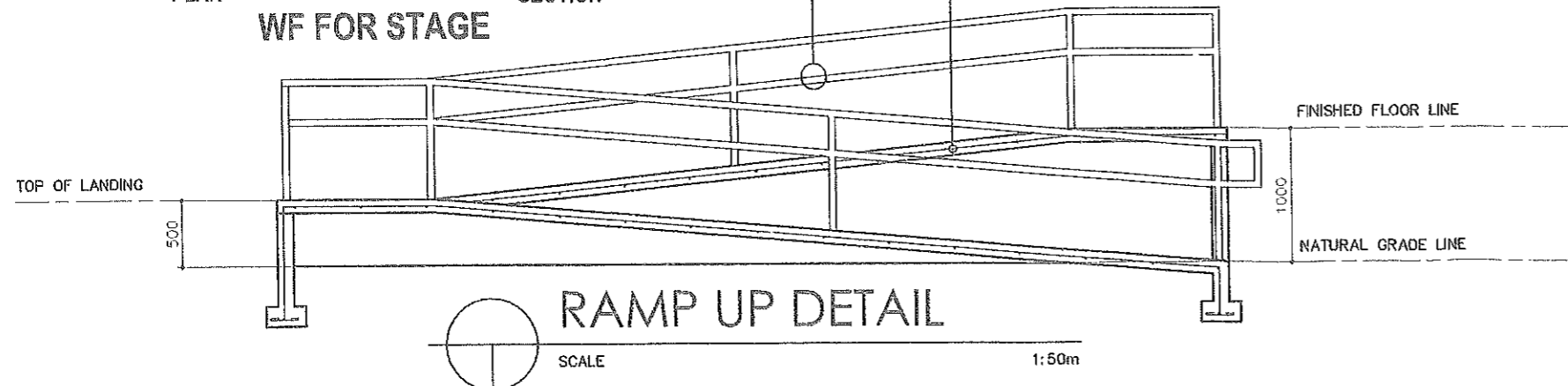
DETAIL OF C2F2
SCALE 1:40m

DETAIL OF COLUMN FOOTING OF STAGE
SCALE 1:50m

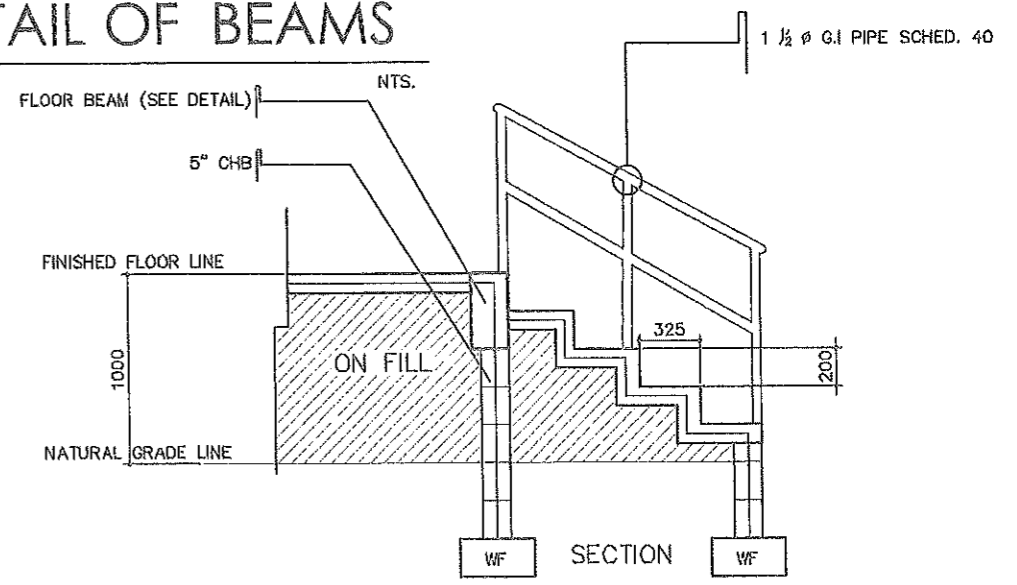


TYPICAL DETAIL OF BEAMS

SCALE



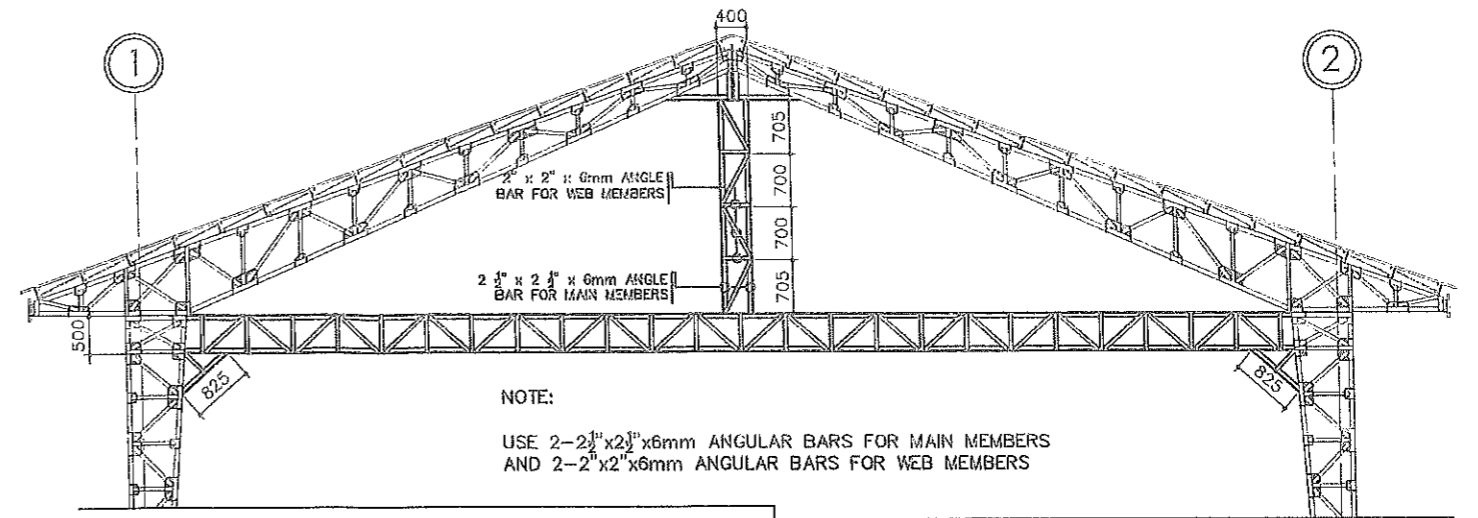
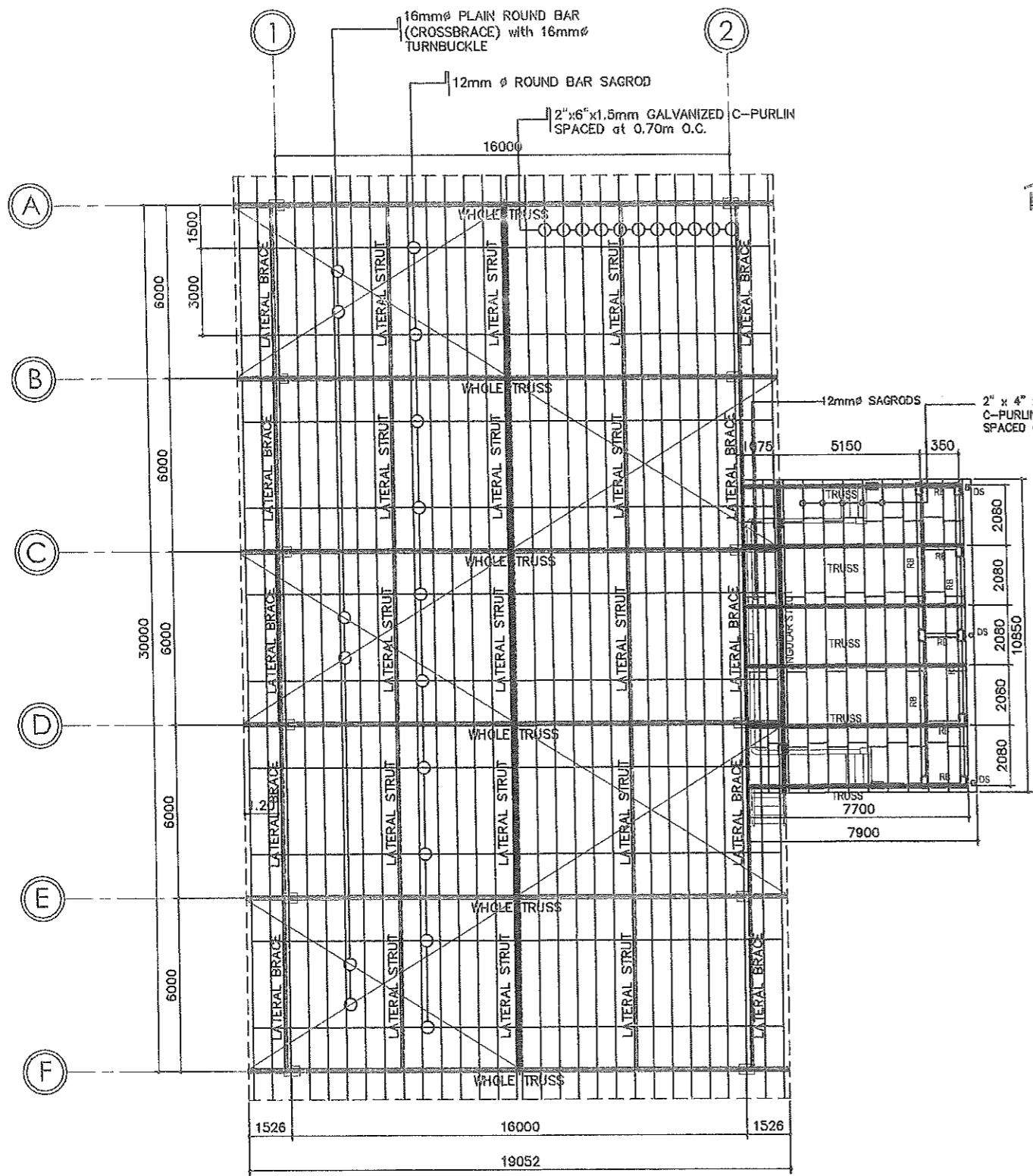
RAMP UP DETAIL
SCALE 1:50m



DETAIL OF STAIRS

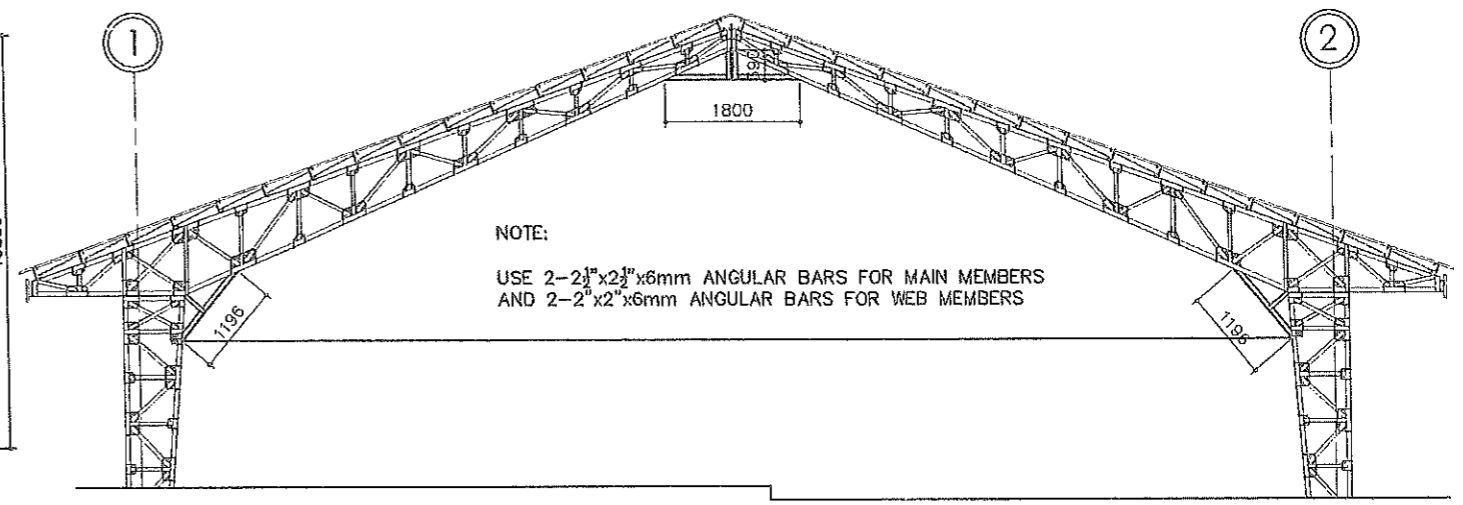
SCALE 1:40m

| | | | | | | | | | |
|--|--|---|--|---|---|--|--|-------------------------|--------------------------------|
| | FROM THE OFFICE OF: REPUBLIC OF THE PHILIPPINES PROVINCE OF PAMPANGA PROVINCIAL ENGINEER'S OFFICE CAPITOL COMPOUND, CITY OF SAN FERNANDO, (P) | PROJECT TITLE: CONSTRUCTION OF MULTI-PURPOSE COVERED AREA LOCATION: SAN ANTONIO, SASMUAN, PAMPANGA | PREPARED BY: REYNARD Y. LAXA ENGINEERING ASSISTANT | CHECKED BY: ESMERALDO T. GULAPA ENGINEER IV | VERIFIED BY: WILFREDO A. MANALILI ASSISTANT PROV'L ENGINEER | RECOMMENDING APPROVAL: OLIMPIO M. PANGAN PROVINCIAL ENGINEER | APPROVED BY: HON. DENNIS G. PINEDA GOVERNOR BY THE AUTHORITY OF THE GOVERNOR ATTY. CHARLIE G. CHUA PROVINCIAL ADMINISTRATOR | SHEET CONTENT: AS SHOWN | SHEET No: S2 6-12 |
|--|--|---|--|---|---|--|--|-------------------------|--------------------------------|



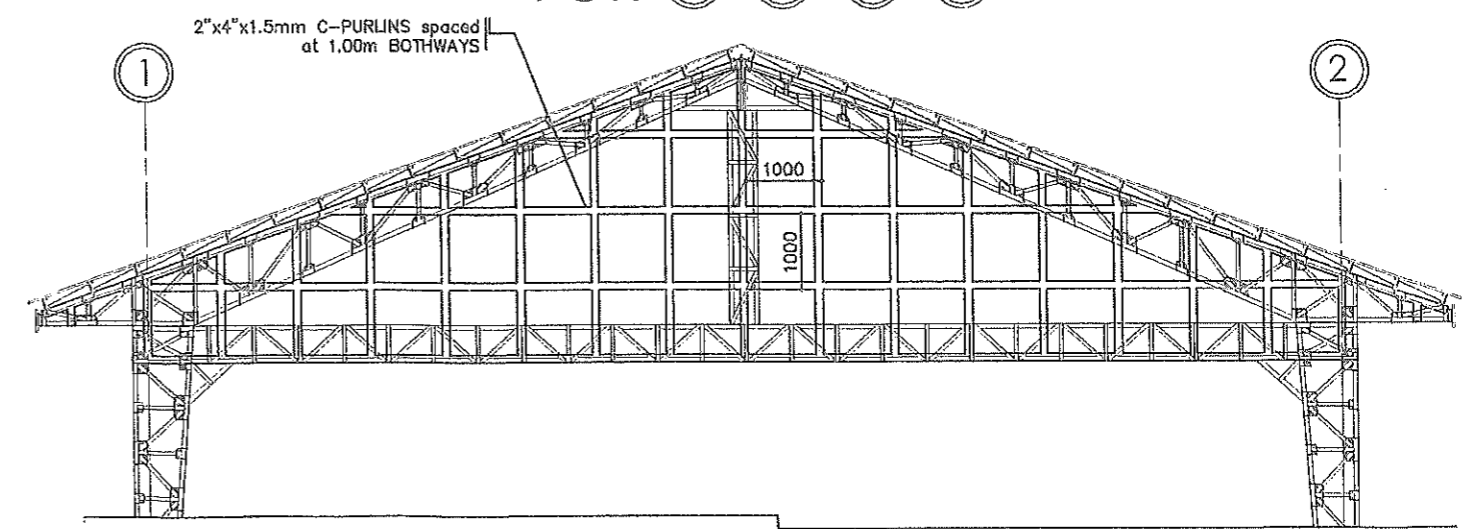
NOTE:
USE 2-2 1/2" x 2 1/2" x 6mm ANGULAR BARS FOR MAIN MEMBERS
AND 2-2" x 2" x 6mm ANGULAR BARS FOR WEB MEMBERS

FOR (A) (F)



NOTE:
USE 2-2 1/2" x 2 1/2" x 6mm ANGULAR BARS FOR MAIN MEMBERS
AND 2-2" x 2" x 6mm ANGULAR BARS FOR WEB MEMBERS

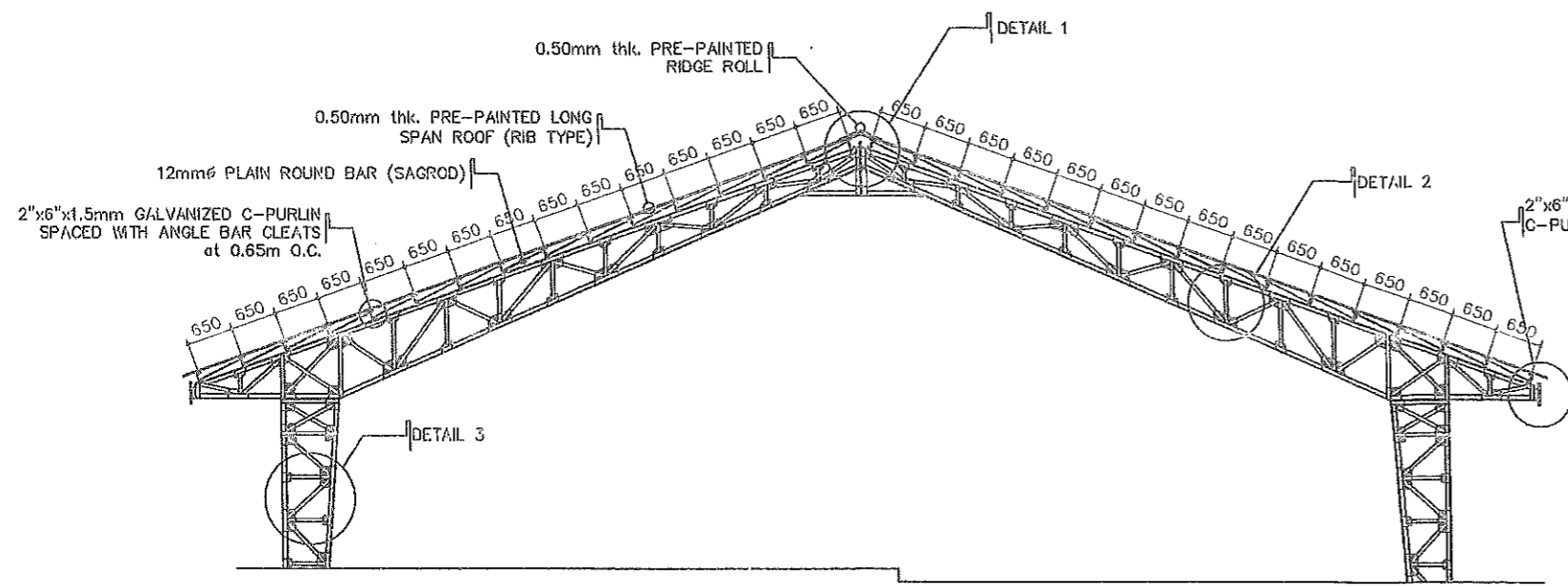
FOR (B) (C) (D) (E)



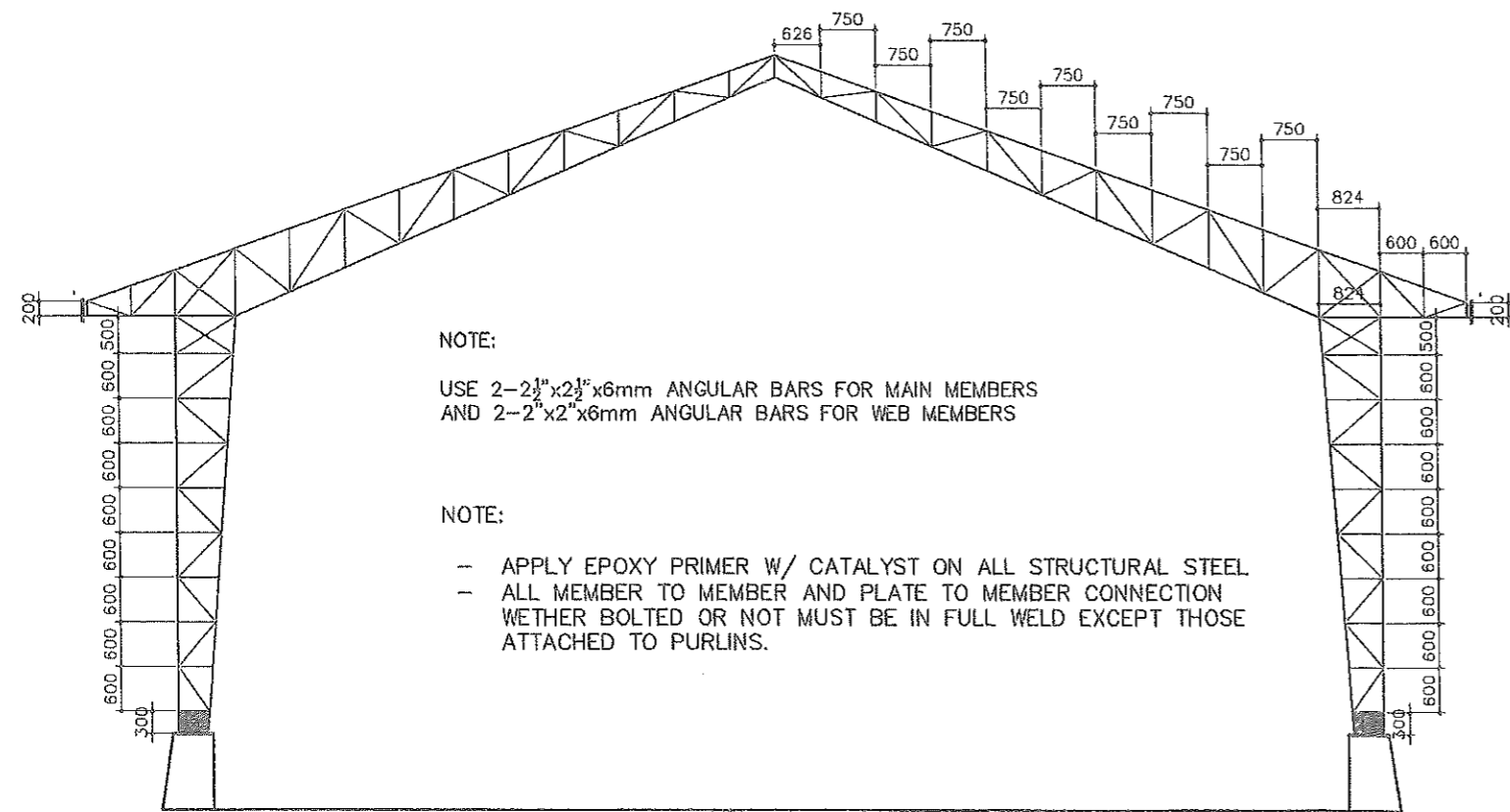
FOR (A) (F)

ROOF FRAMING PLAN
SCALE 1:200m

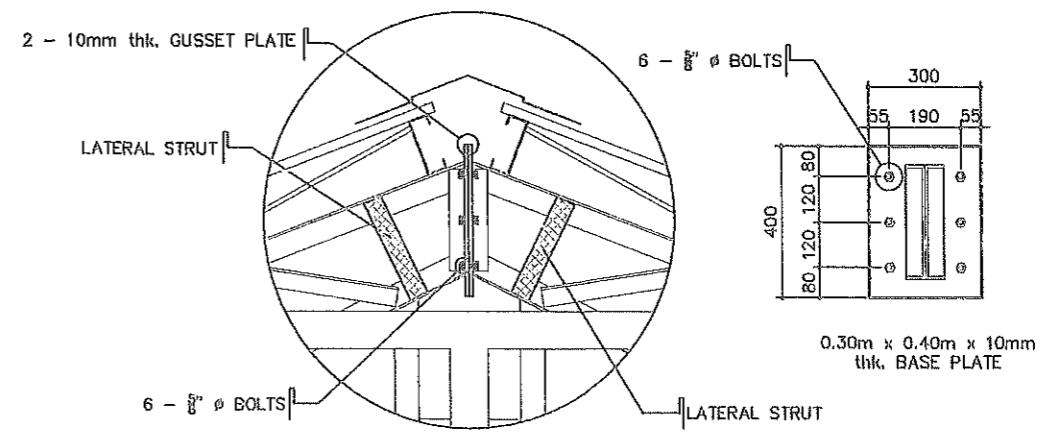
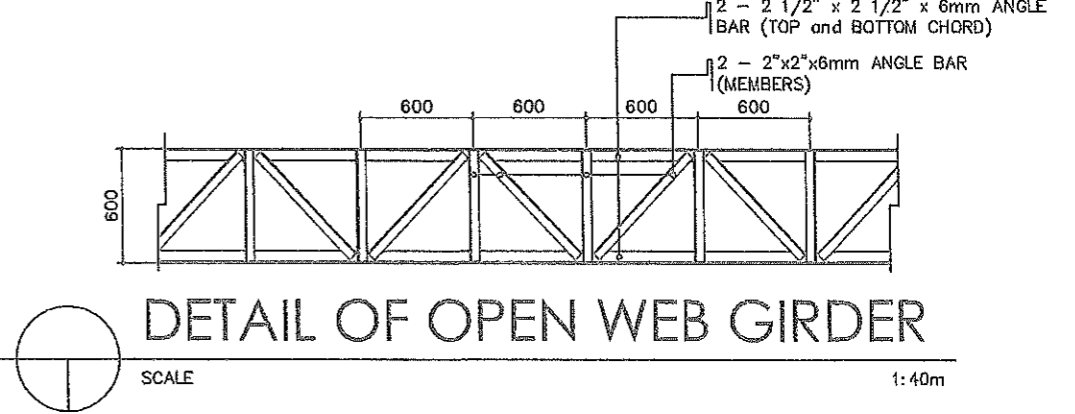
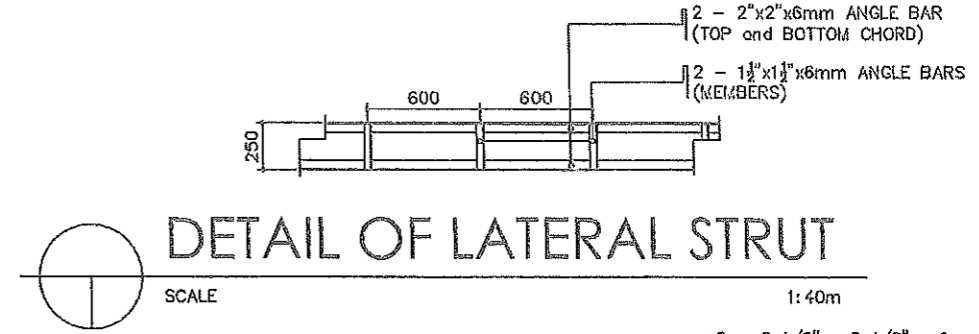
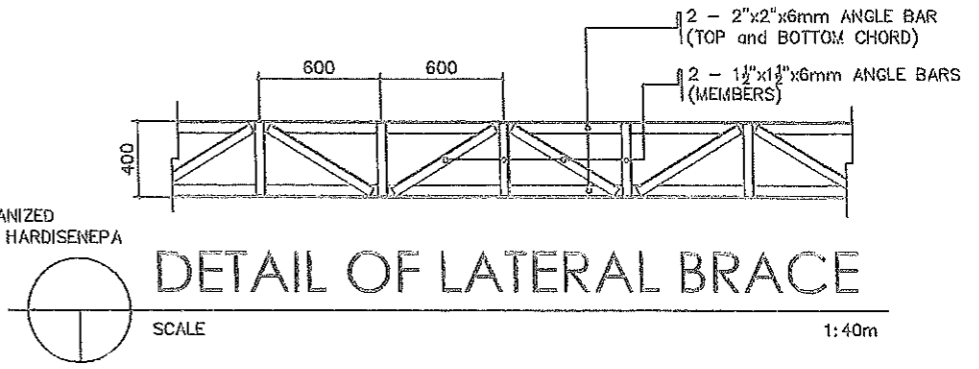
| | | | | | | | | | |
|--|---|---|--|--|---|--|--|----------------|-----------------------|
| | FROM THE OFFICE OF: | PROJECT TITLE: | PREPARED BY: | CHECKED BY: | VERIFIED BY: | RECOMMENDING APPROVAL: | APPROVED BY: | SHEET CONTENT: | SHEET No: |
| | REPUBLIC OF THE PHILIPPINES PROVINCE OF PAMPANGA PROVINCIAL ENGINEER'S OFFICE CAPITOL COMPOUND, CITY OF SAN FERNANDO, (P) | CONSTRUCTION OF MULTI-PURPOSE COVERED AREA LOCATION: SAN ANTONIO, SASMUAN, PAMPANGA | WEYNARD Y. LAXA ENGINEERING ASSISTANT | ESMERALDO T. GULAPA ENGINEER IV | WILFREDO A. MANALILI ASSISTANT PROV'L ENGINEER | OLIMPIO M. PANGAN PROVINCIAL ENGINEER | HON. DENNIS G. PINEDA GOVERNOR BY THE AUTHORITY OF THE GOVERNOR ATTY. CHARLIE G. CHUA PROVINCIAL ADMINISTRATOR | AS SHOWN | S3 7-12 |
| | | | | | | | | | |



TYPICAL TRUSS DETAIL
SCALE 1:100m

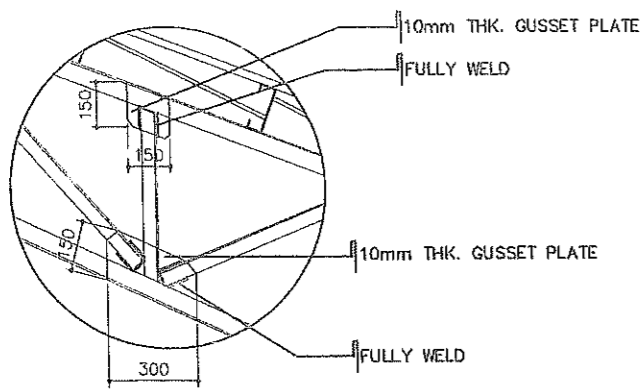


TRUSS DIAGRAM
SCALE 1:100m



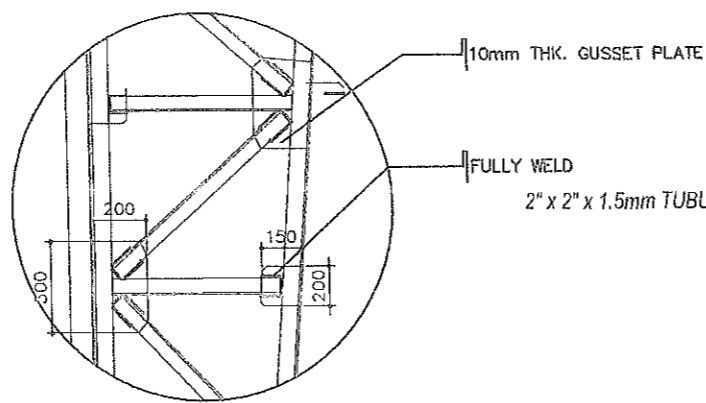
DETAIL 1
SCALE NTS

| | | | | | | | | | |
|--|--|---|---|------------------------------------|--|--|---|----------------|------------|
| | FROM THE OFFICE OF: | PROJECT TITLE: | PREPARED BY: | CHECKED BY: | VERIFIED BY: | RECOMMENDING APPROVAL: | APPROVED BY: | SHEET CONTENT: | SHEET No.: |
| | REP. BLIC OF THE PHILIPPINES PROVINCE OF PAMPANGA | CONSTRUCTION OF MULTI-PURPOSE COVERED AREA | <i>[Signature]</i> | <i>[Signature]</i> | <i>[Signature]</i> | <i>[Signature]</i> | HON. DENNIS G. PINEDA GOVERNOR BY THE AUTHORITY OF THE GOVERNOR | AS SHOWN | S4 |
| | PROVINCIAL ENGINEER'S OFFICE | LOCATION: SAN ANTONIO, SASMUJAN, PAMPANGA | MENARD Y. LAYA ENGINEERING ASSISTANT | ESMERALDO T. GULAPA ENGINEER IV | WILFREDO A. MANALIT ASSISTANT PROV'L ENGINEER | OLIMPIO M. PANGAN PROVINCIAL ENGINEER | Atty. CHARLIE G. CHUA PROVINCIAL ADMINISTRATOR | | 8-12 |



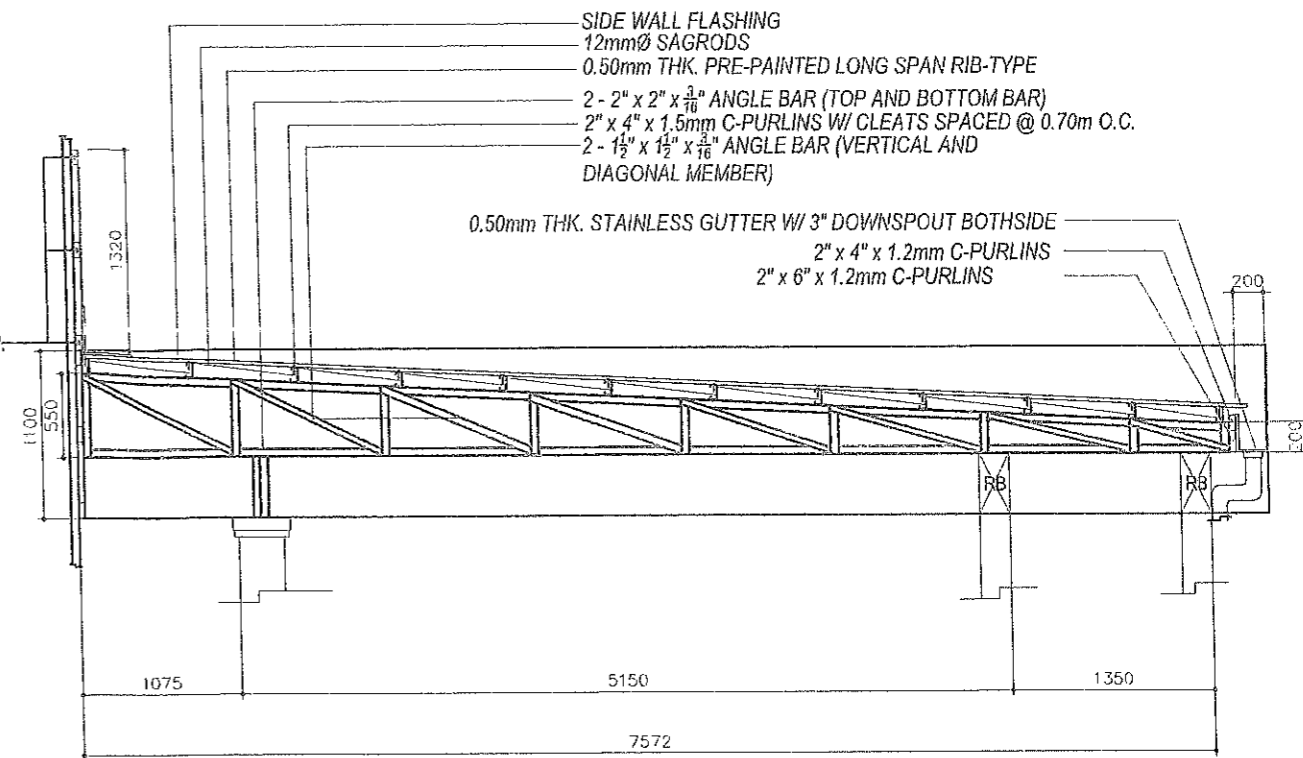
DETAIL 2

SCALE NTS



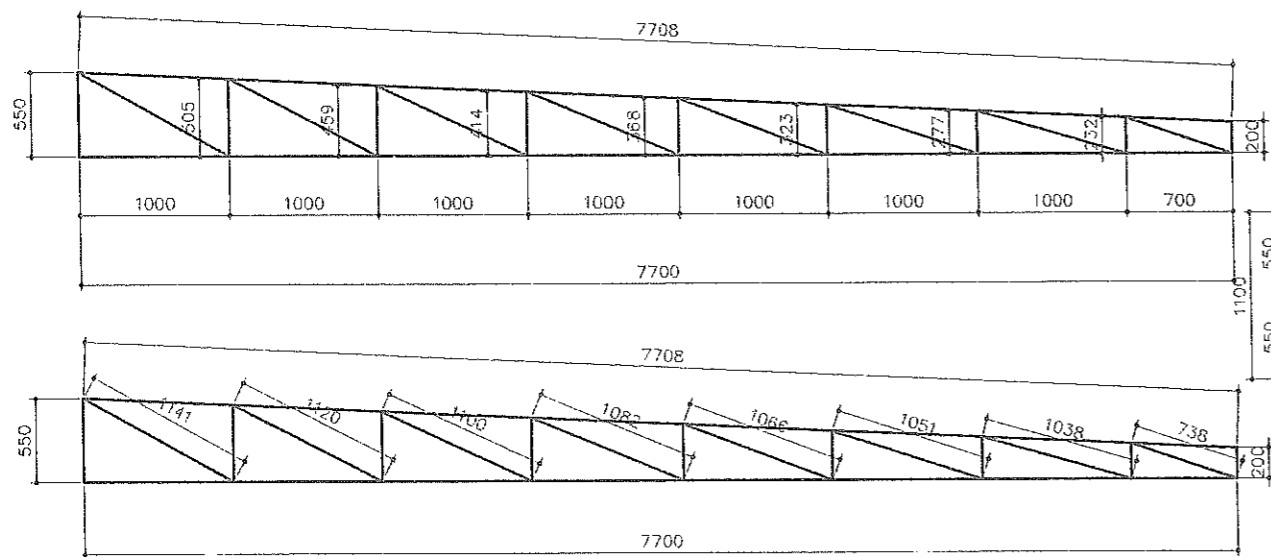
DETAIL 3

SCALE NTS



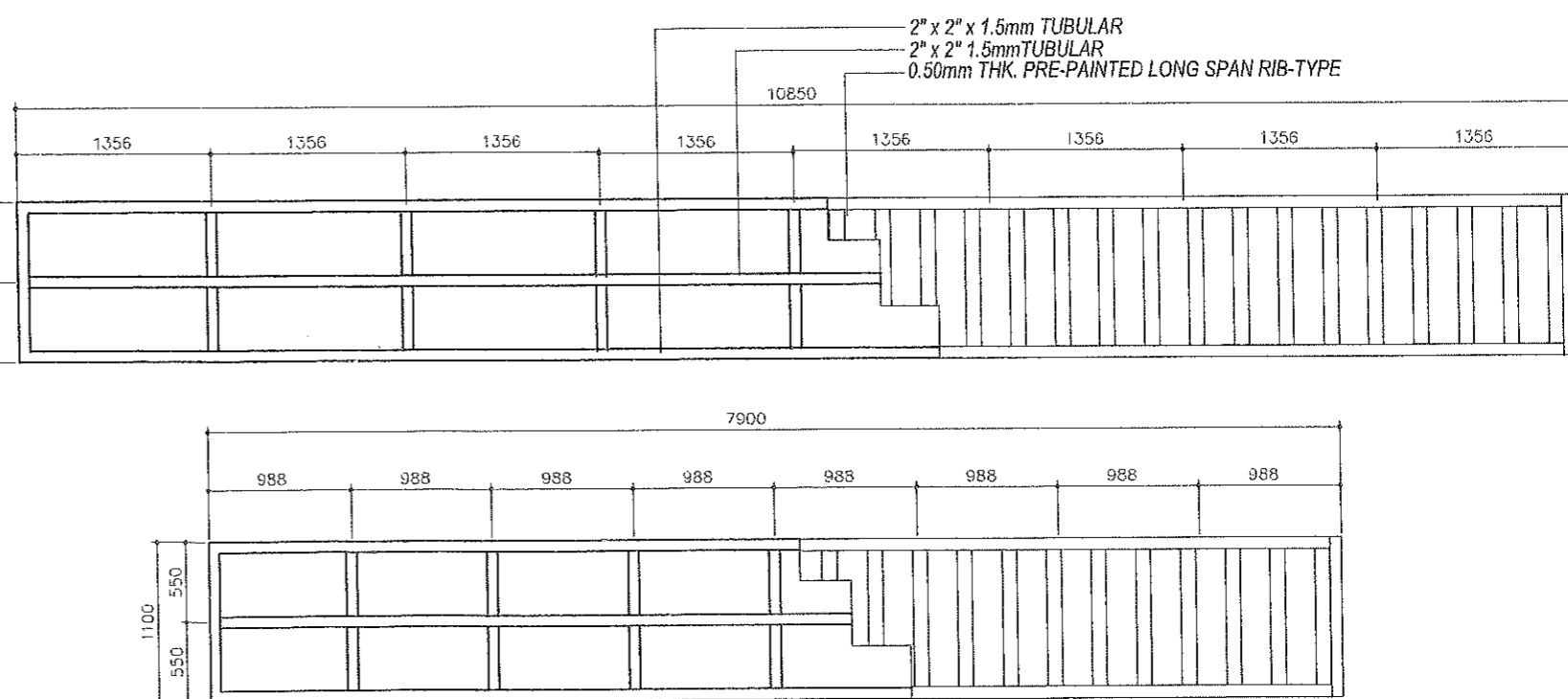
TYPICAL TRUSS DETAIL

SCALE 1:50m



TRUSS DIAGRAM

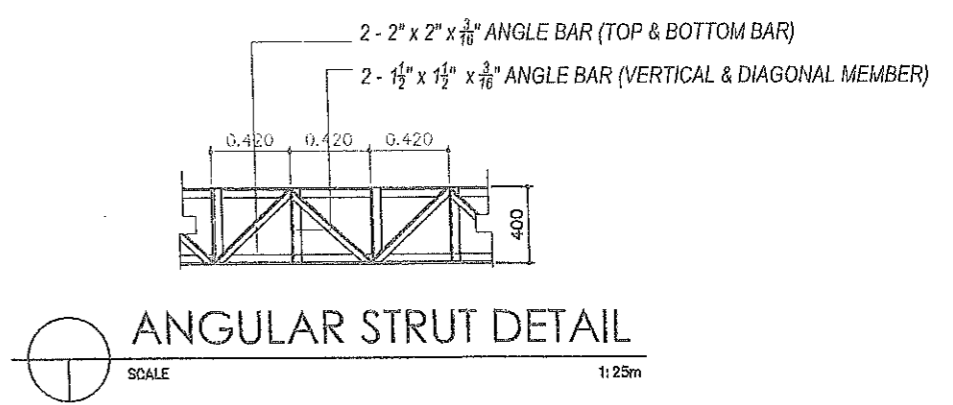
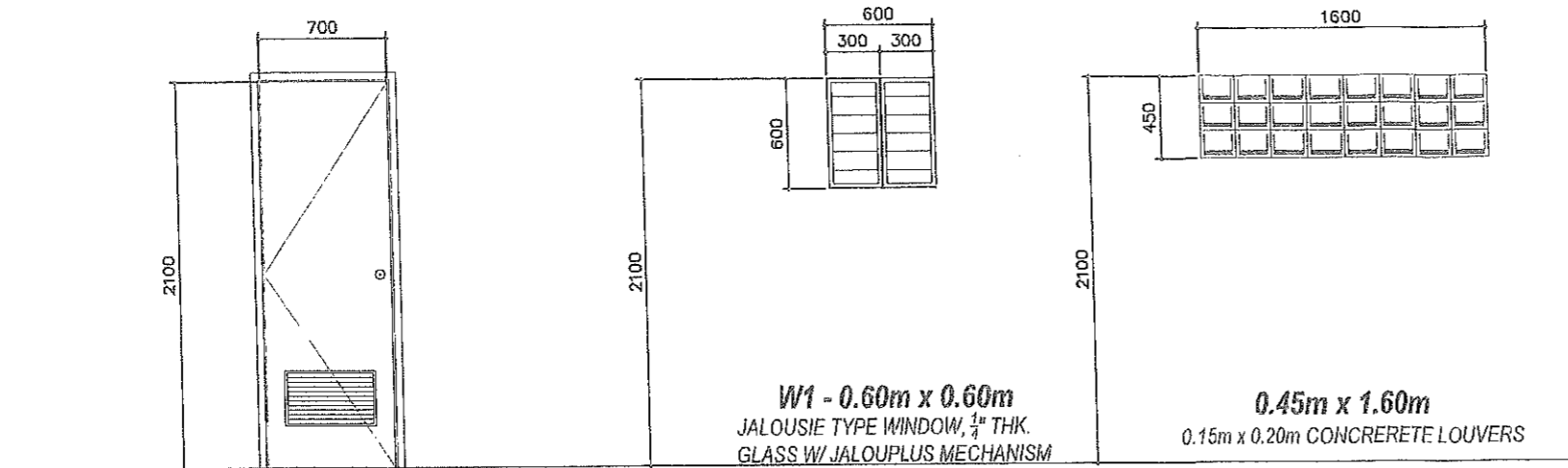
SCALE 1:50m



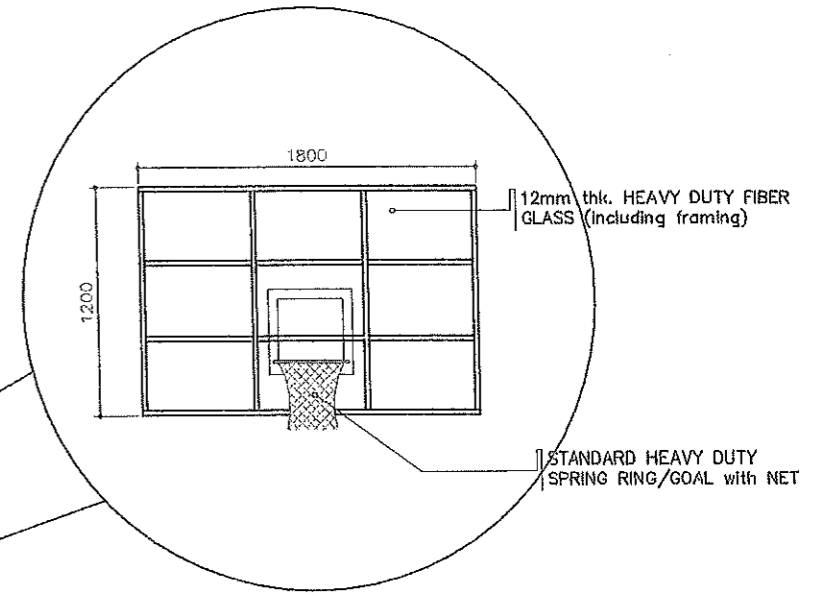
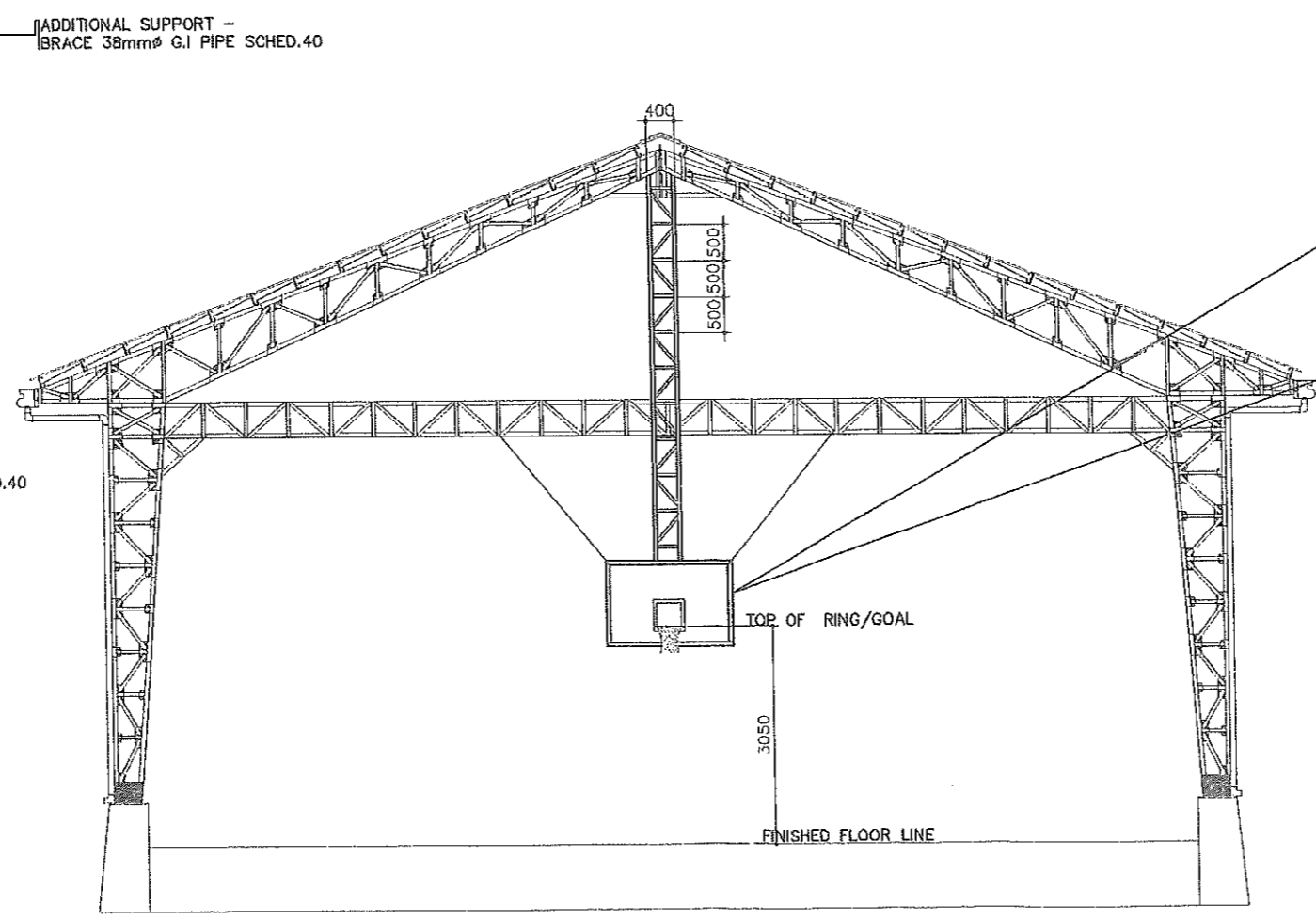
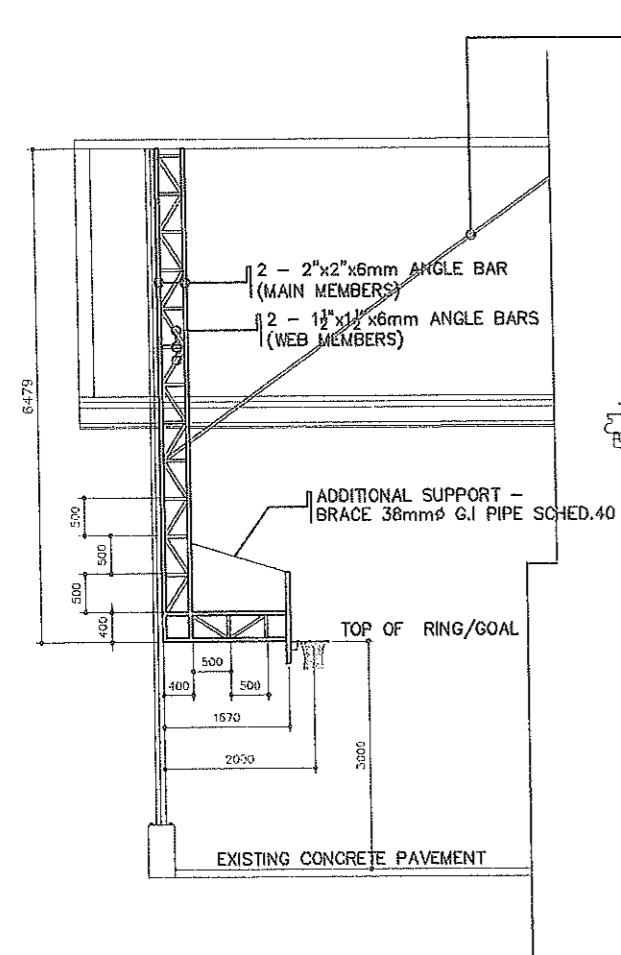
PARAPET DETAIL

SCALE 1:50m

| | | | | | | | | | |
|--|---|---|---|--|---|--|--|----------------|-----------------------|
| | FROM THE OFFICE OF: | PROJECT TITLE: | PREPARED BY: | CHECKED BY: | VERIFIED BY: | RECOMMENDING APPROVAL: | APPROVED BY: | SHEET CONTENT: | SHEET No: |
| | REPUBLIC OF THE PHILIPPINES PROVINCE OF PAMPANGA PROVINCIAL ENGINEER'S OFFICE CAPITOL COMPOUND, CITY OF SAN FERNANDO, (P) | CONSTRUCTION OF MULTI-PURPOSE COVERED AREA LOCATION: SAN ANTONIO, SASMUAN, PAMPANGA | REYNARD Y. LAXA ENGINEERING ASSISTANT IV | ESMERALDO T. GULAPA ENGINEER IV | WELFREDO A. MANALILI ASSISTANT PROV'L ENGINEER | OLIMPIO M. PANGAN PROVINCIAL ENGINEER | HON. DENNIS G. PINEDA GOVERNOR BY THE AUTHORITY OF THE GOVERNOR ALY DHARLIE G. CHUA PROVINCIAL ADMINISTRATOR | AS SHOWN | S5 9-12 |
| | | | | | | | | | |



SCHEDULE OF DOORS AND WINDOWS
SCALE 1:50m



SIDE ELEVATION
SCALE 1:100m

TYPICAL ELEVATION
SCALE 1:100m

| | | | | | | | | | |
|--|--|---|---|---|---|--|--|----------------------------|---------------------------------|
| | FROM THE OFFICE OF: REPUBLIC OF THE PHILIPPINES PROVINCE OF PAMPANGA PROVINCIAL ENGINEER'S OFFICE CAPITOL COMPOUND, CITY OF SAN FERNANDO, (P) | PROJECT TITLE: CONSTRUCTION OF MULTI-PURPOSE COVERED AREA LOCATION: SAN ANTONIO, SASMUAN, PAMPANGA | PREPARED BY: EDWARD Y. LAXA ENGINEERING ASSISTANT V | CHECKED BY: ESMERALDO T. GULAPA ENGINEER IV | VERIFIED BY: WILFREDO A. MANALILI ASSISTANT PROV'L ENGINEER | RECOMMENDING APPROVAL: OLIMPIO M. PANGAN PROVINCIAL ENGINEER | APPROVED BY: HON. DENNIS G. PINEDA GOVERNOR BY THE AUTHORITY OF THE GOVERNOR SHIRLEY G. CHUA PROVINCIAL ADMINISTRATOR | SHEET CONTENT: AS SHOWN | SHEET No: S6 10-12 |
|--|--|---|---|---|---|--|--|----------------------------|---------------------------------|

LEGEND:

| | |
|--|--|
| | 18 WATTS CFL RECEPTACLE |
| | DUPLEX CONVENIENCE OUTLET DUPLEX WEATHERROOF CONVENIENCE OUTLET |
| | PANELBOARD |
| | HOME RUN |
| | 100W LED FLOODLIGHT |
| | LAMP POST |
| | ONE GANG SINGLE POLE SWITCH |
| | WIRE CONCEALED IN CEILING |
| | WIRE CONCEALED WALL/FLOOR |

GENERAL NOTES :

- ALL ELECTRICAL INSTALLATIONS HEREIN SHALL BE DONE IN ACCORDANCE WITH THE PROVISIONS OF THE PHILIPPINE ELECTRIC CODE RULES & REGULATIONS OF THE LOCAL ENFORCING AUTHORITY PERTINENT TO THE APPROVAL OF THE P.E.E.
- TYPE OF POWER SERVICE TO BE SUPPLIED SHALL BE SINGLE PHASE 220VOLTS AC 3 WIRE @ 60HZ.
- ALL MATERIALS TO BE USED SHALL BE NEW AND OF THE APPROVED QUALITY FOR THEIR SPECIFIC PURPOSE AND LOCATION.
- UNLESS OTHERWISE SPECIFIED THE MINIMUM SIZE OF WIRE SHALL BE 3.5mm² AND MINIMUM SIZE OF CONDUIT SHALL BE 15mm^Ø RGS.
- LOCATION OF LIGHTING FIXTURES SHALL BE COORDINATED WITH THE ARCHITECTURAL LAYOUT FOR REFLECTED CEILING PLAN.
- PROVIDE AUTOMATIC CIRCUIT BREAKER FOR ELECTRIC CONTROL USE ONLY BOLT-ON TYPE CIRCUIT BRAKERS.

NOTE:

ALL WORKS SHOULD BE DONE UNDER THE DIRECT SUPERVISION OF A LICENSED ELECTRICAL ENGINEER OR MASTER ELECTRICIAN AND IN STRICT ACCORDANCE WITH THIS PLANS AND OR THE METHOD AS PRESCRIBED BY THE NATIONAL ELECTRIC CODE OF THE PHILIPPINES, AND OF THE LOCAL POWER COMPANY.

MOUNTING HEIGHT:

- LIGHTING CONTROL SWITCHES:
1.37m (4'-6") FROM CENTER OF DEVICE TO FINISHED FLOOR LINE.
- CONVENIENCE AND TELEPHONE OUTLETS:
1.2m ABOVE FINISHED FLOOR LINE OR FITTED TO BASEBOARDS IF SO REQUIRED BY THE ARCHITECT.
- PANELBOARD:
1.8m FROM TOP OF PANEL TO FINISHED FLOOR LINE UNLESS OTHERWISE REQUIRED BY FIELD CONDITIONS.

ALL MOUNTING HEIGHT SHALL BE SUBJECT FOR APPROVAL BY THE ARCHITECT/OWNER

SCHEDULE & COMPUTATION OF LOADS

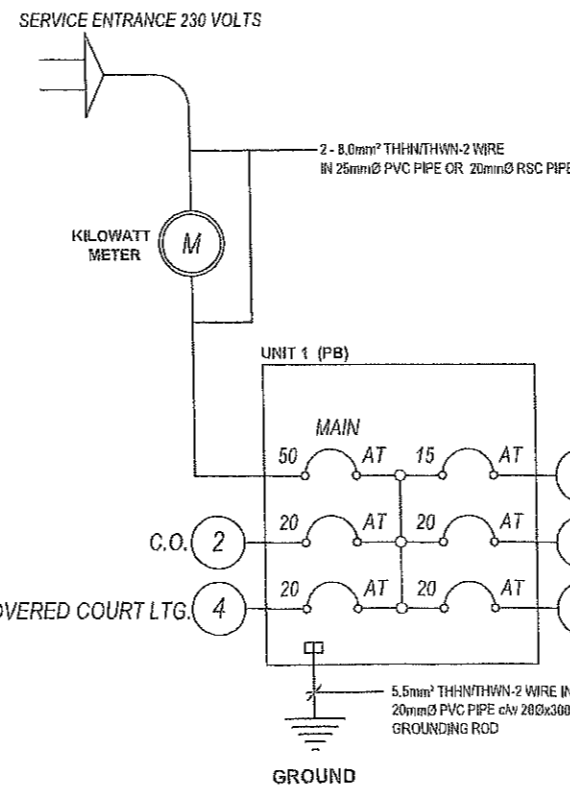
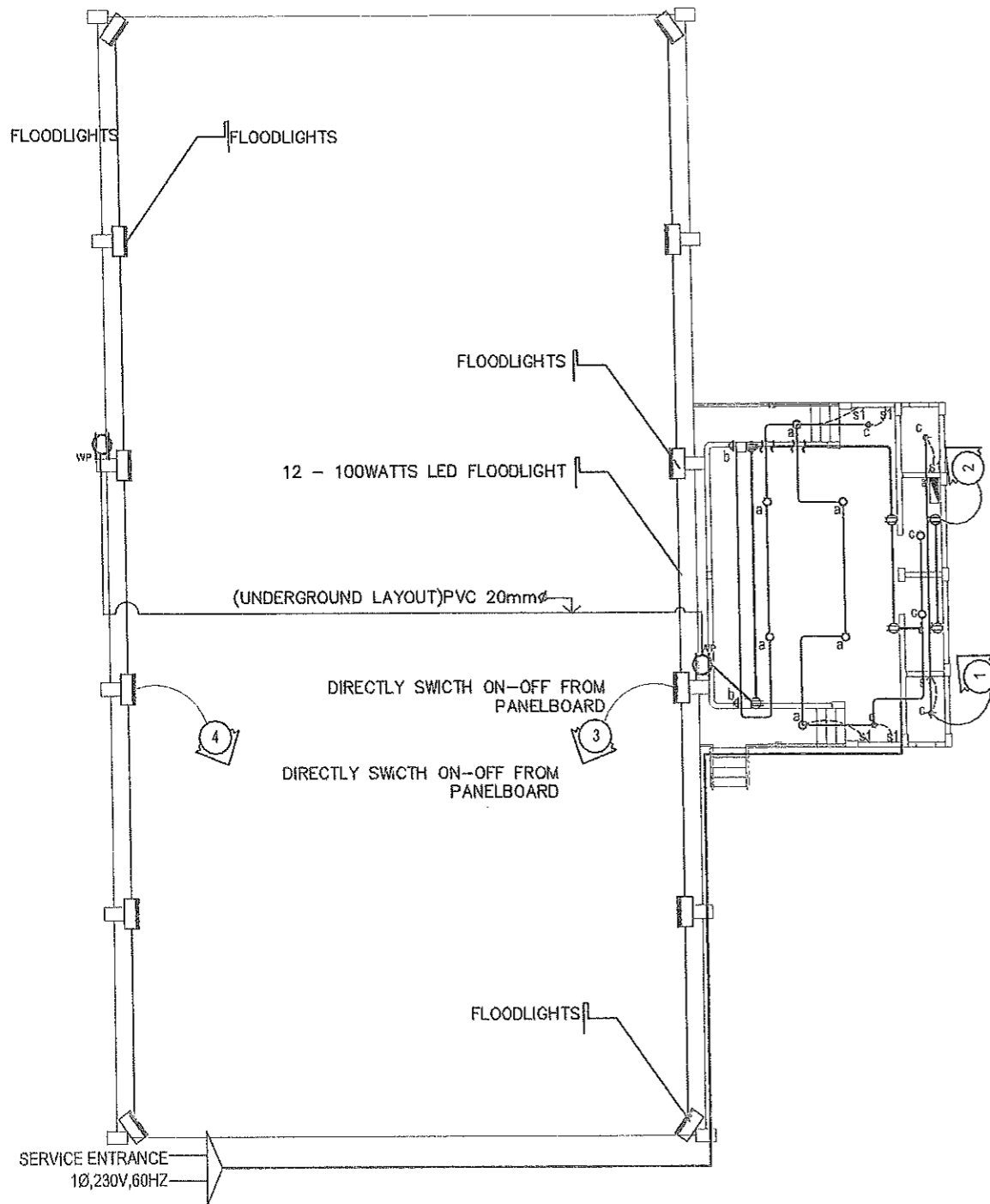
PANEL NAME: CONSTRUCTION OF MULTI-PURPOSE COVERED AREA AND STAGE AT SAN ANTONIO, SASMUAN

| FEED FROM: | LOAD CALCULATION | OVER-CURRENT PROTECTION | | | SIZE OF WIRES ON FLEXIBLE CONDUITS | | | |
|------------|--|-------------------------|------|-------|------------------------------------|----|---|--|
| | | CONNECTED LOAD | AT | AF | | P | | |
| CKT. NO. | DESCRIPTION | V | VA | A | | | | |
| 1 | 10 - 18W LED DOWNLIGHT RECESSED 2 - 9W LED DOWNLIGHT RECESSED | 220 | 198 | 0.90 | 15 | 50 | 2 | 2 - 3.5mm ² THHN WIRE 1 - 2.0mm ² THHN GROUND |
| 2 | 8 - 18W CONVENIENCE OUTLET @ 180W | | 1440 | 6.54 | 20 | 50 | 2 | 2 - 3.5mm ² THHN WIRE 1 - 2.0mm ² THHN GROUND |
| 3 | 6 - FLOODLIGHT 100W LED TYPE OUTDOOR | | 600 | 2.73 | 20 | 50 | 2 | 2 - 3.5mm ² THHN WIRE 1 - 2.0mm ² THHN GROUND |
| 4 | 5 - FLOODLIGHT 100W LED TYPE OUTDOOR IP65 | | 600 | 2.73 | 20 | 50 | 2 | 2 - 3.5mm ² THHN WIRE 1 - 2.0mm ² THHN GROUND |
| 5 | SPARE | 220 | 1500 | 4.54 | 20 | 50 | 2 | PVC |
| | | | | 17.44 | | | | |

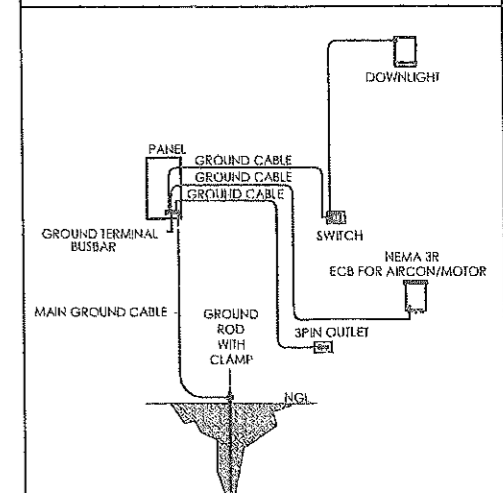
$I = 17.44 + (25\% \times 6.54) @ 100DF$
= 19.08A

USE: 2-8.0MM THHN WIRE
5.5MM THHN @ GROUND WIRE

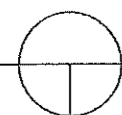
USE: 50AT .MCB 220VOLTS
WITH 5-BRANCHES, PLUG IN TYPE
1-15AT, 2P
4-20T, 2P



DEDICATED GROUNDING SYSTEM
(GROUND CABLE SIZE SEE LOAD SCHEDULE)



POWER AND LIGHTING LAYOUT



SCALE

1:150m

| | | | | | | | | | |
|--|---|---|--|--|---|---|--|----------------|------------|
| | FROM THE OFFICE OF: | PROJECT TITLE: | PREPARED BY: | CHECKED BY: | VERIFIED BY: | RECOMMENDING APPROVAL: | APPROVED BY: | SHEET CONTENT: | SHEET No.: |
| | REPUBLIC OF THE PHILIPPINES PROVINCE OF PAMPANGA PROVINCIAL ENGINEER'S OFFICE CAPITOL COMPOUND, CITY OF SAN FERNANDO, (P) | CONSTRUCTION OF MULTI-PURPOSE COVERED AREA LOCATION: SAN ANTONIO, SASMUAN, PAMPANGA | EDWARD A. MANALILI ENGINEERING ASSISTANT MICHAEL R. MONTENAYOR ENGINEER III | ESMERALDO T. GULAPA ENGINEER IV | WILFREDO A. MANALILI ASSISTANT PROV'L ENGINEER | OLIMPIO M. PANG'AN PROVINCIAL ENGINEER | HON. DENNIS G. PINEDA GOVERNOR BY THE AUTHORITY OF THE GOVERNOR AUY CHARLIE G. CHUA PROVINCIAL ADMINISTRATOR | AS SHOWN | E1 |
| | | | | | | | | | 11-12 |

GENERAL NOTES:

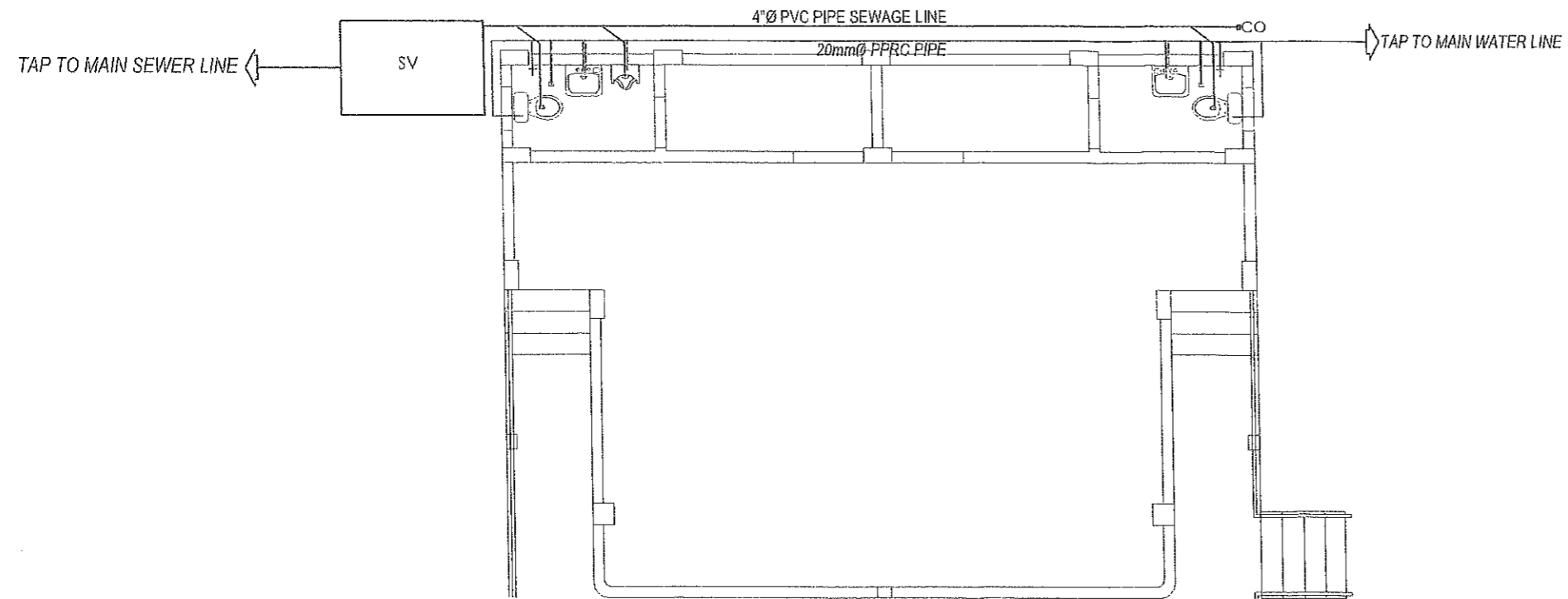
- ALL PLUMBING WORKS INDICATED HEREIN SHALL MEET THE PROVISION OF THE PLUMBING CODE OF THE PHILIPPINES, THE NATIONAL PLUMBING CODE, LOCAL CITY ORDINANCE RULES & REGULATIONS.
- PLUMBING CONTRACTOR TO COORDINATE WITH OTHER RELATED DRAWINGS AND SPECIFICATIONS, AND NOTIFY THE CONSULTING ENGINEER OF ANY DISCREPANCY FOUND THEREIN.
- ALL PIPES SHALL BE INSTALLED AS INDICATED ON PLANS. ANY RELOCATION REQUIRED FOR PROPER EXECUTION OF OTHER TRADE SHALL BE WITH PRIOR APPROVAL OF THE ARCHITECT OR ENGINEER.
- PROPOSED SANITARY UTILITIES SHALL CONFORM TO THE ACTUAL SITE CONDITION, DEPTH AND INVERT ELEVATION OF ALL EXISTING PIPES AND STRUCTURES AS VERIFIED BY THE CONTRACTOR.
- ALL SLOPES FOR HORIZONTAL DRAINAGE SHALL MAINTAIN 1% UNLESS OTHERWISE SPECIFIED.
- SIZE OF WATER SUPPLY PIPES TO FIXTURES SHALL BE IN ACCORDANCE WITH THE MANUFACTURER'S INSTRUCTIONS.
- THE CONTRACTOR SHALL VERIFY ALL EXISTING UTILITIES AT SITE, TAPPING POINT AND WATER LINE SERVICE CONNECTING POINT UNLESS OTHERWISE SPECIFIED.
- ALL FIXTURES SHALL BE INDIVIDUALLY VENTED.
- ALL PIPE SIZE AND DIMENSION ARE IN MILLIMETERS, UNLESS OTHERWISE SPECIFIED.
- NOTE IMPORTANT: ALL POSITIONS OF ALL PLUMBING APPLIANCES, FLOOR DRAINS, CLEANOUT SHALL BE REFERRED TO THE ARCHITECTS FOR APPROVALS. SUBMIT SHOP DRAWINGS AS REQUIRED.

MATERIAL SPECIFICATIONS

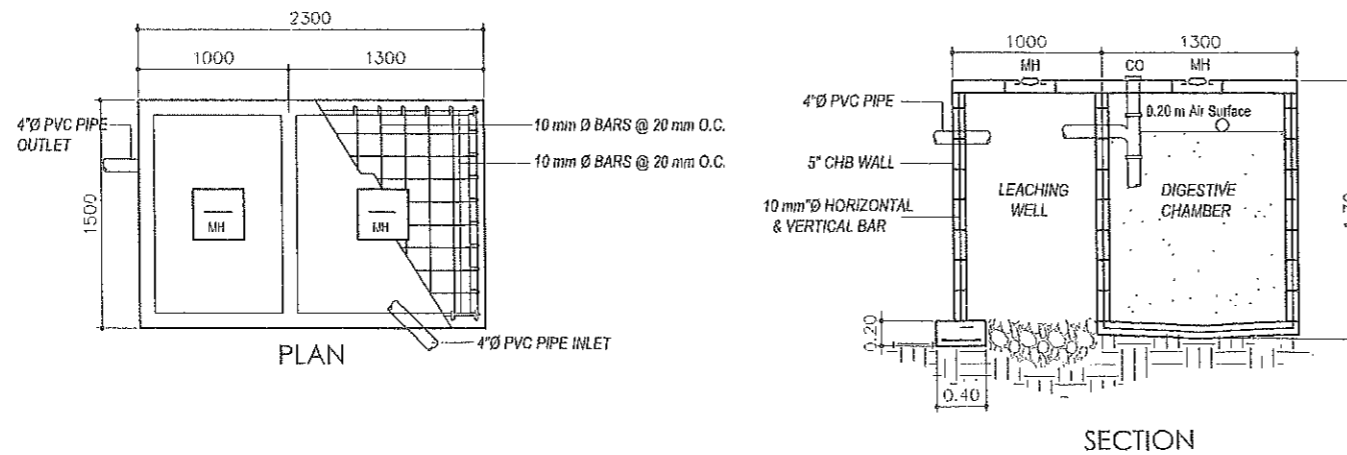
| | |
|-------------------|--|
| COLD WATER LINES | SHALL BE PVC BLUE PIPE 1/2" DIAMETER |
| SEWER/WASTE PIPES | SHALL BE 4" DIAMETER POLYVINYL (PVC) PIPE, SERIES 1000 ALASCO FITTINGS SHALL BE PVC WITH SOLVENT CEMENT JOINT TO ASTM D2564 |
| VENT PIPES | SHALL BE 2" DIAMETER POLYVINYL (PVC) PIPE, SERIES 1000 "EMERALD" BRAND OR APPROVED EQUAL. FITTINGS SHALL BE PVC WITH SOLVENT CEMENT JOINT TO ASTM D2564. |
| DRAINAGE LINE | SHALL BE 4" DIAMETER POLYVINYL (PVC) PIPE, SERIES 1000 "EMERALD" BRAND OR APPROVED EQUAL. FITTINGS SHALL BE PVC WITH SOLVENT CEMENT JOINT TO ASTM D2564. |
| FLOOR DRAIN | SHALL BE CAST IRON BODY W/ BRONZE OR STAINLESS COVER STRAINER "JPI" MODEL JPI-100-13, JPI-100-1 OR APPROVED EQUAL. |
| FLOOR CLEANOUT | SHALL BE BRONZE OR STAINLESS COVER "JPI" BRAND OR APPROVED EQUAL. |
| GATE VALVES | "KITZ", "CRANE" BRAND OR APPROVED EQUAL. |
| WATER METER | WATER METER SHALL BE "BADGER", "ARAD", "ASAHI" BRAND OR APPROVED EQUAL. |

LEGEND:

| | |
|------|------------------------|
| FD | - FLOOR DRAIN |
| VSTR | - VENT STOCK THRU ROOF |
| CB | - CATCH BASIN |
| SV | - SEPTIC VAULT |
| CO | - CLEAN OUT |
| GV | - GATE VALVE |
| CV | - CHECK VALVE |
| WM | - WATER METER |
| — | - COLD WATER LINE |
| — | - SEWAGE LINE |



PLUMBING LAYOUT
SCALE 1:200m



DETAIL SEPTIC TANK
SCALE 1:50m

| | | | | | | | | | |
|--|---|---|--|------------------------------------|---|--|---|---|------------|
| | FROM THE OFFICE OF: | PROJECT TITLE: | PREPARED BY: | CHECKED BY: | VERIFIED BY: | RECOMMENDING APPROVAL: | APPROVED BY: | SHEET CONTENT: | SHEET No.: |
| | REPUBLIC OF THE PHILIPPINES PROVINCE OF PAMPANGA PROVINCIAL ENGINEER'S OFFICE CAPITOL COMPOUND, CITY OF SAN FERNANDO, (P) | CONSTRUCTION OF MULTI-PURPOSE COVERED AREA LOCATION: SAN ANTONIO, SASMUAN, PAMPANGA | REYNARD Y. LAXA ENGINEERING ASSISTANT | ESMERALDO T. GULAPA ENGINEER IV | WILFREDO A. MANALILI ASSISTANT PROV'L ENGINEER | OLIMPIO M. PANGAN PROVINCIAL ENGINEER | HON. DENNIS G. PINEDA GOVERNOR BY THE AUTHORITY OF THE GOVERNOR | RAY CHARLIE G. CHUA PROVINCIAL ADMINISTRATOR | AS SHOWN |