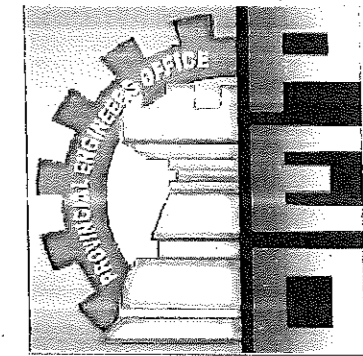
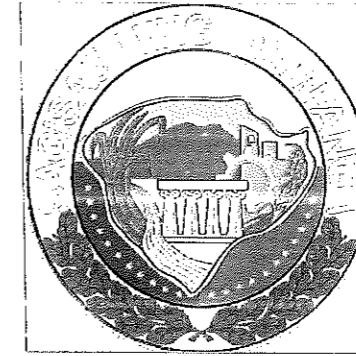


REPUBLIC OF THE PHILIPPINES
 PROVINCE OF PAMPANGA

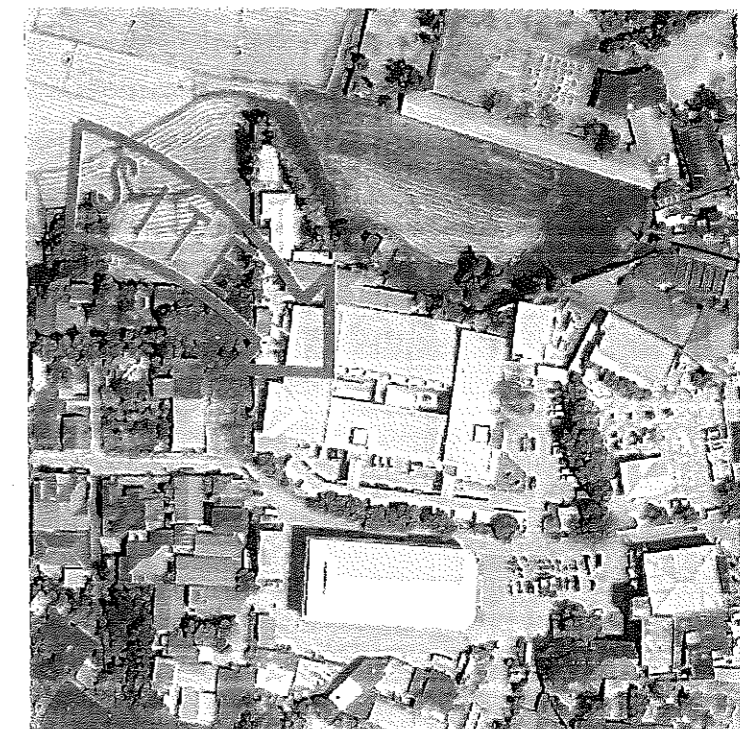
PROVINCIAL ENGINEER'S OFFICE

CAPITOL COMPOUND, CITY OF SAN FERNANDO, PAMPANGA



SCOPE OF WORK

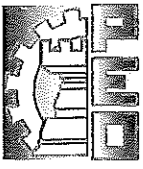
- 1.) RECONSTRUCTION OF RAMPS FOR PWD
- 2.) CONSTRUCTION OF ROOFING FOR THE RAMPS
- 3.) PAINTING OF PWD PARKING LOT
- 4.) RENOVATION OF PWD AND OTHER COMFORT ROOMS
- 5.) REPLACEMENT OF FLOOR DRAINS OF ALL COMFORT ROOMS

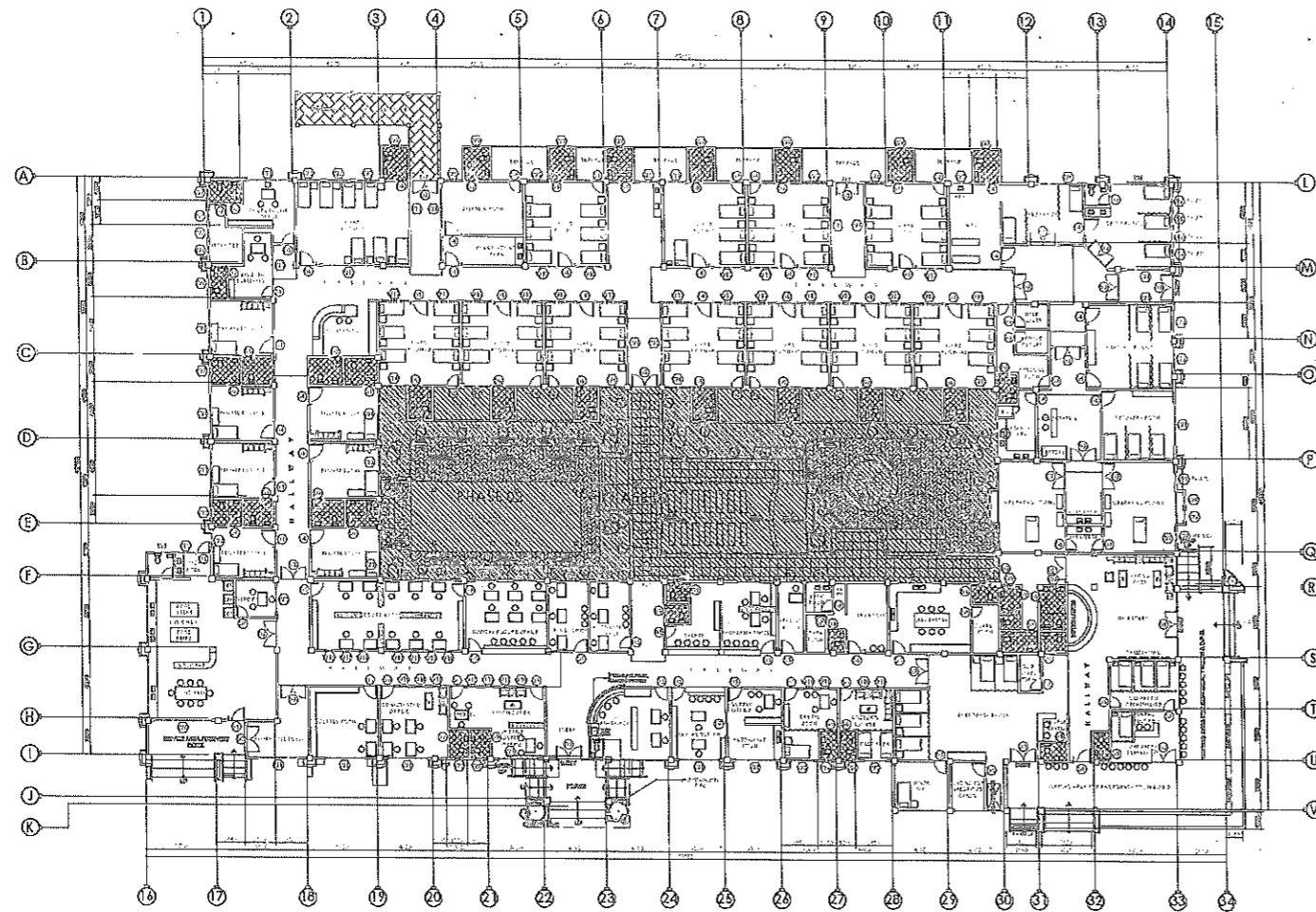


VICINITY MAP
 SCALE: NTS.

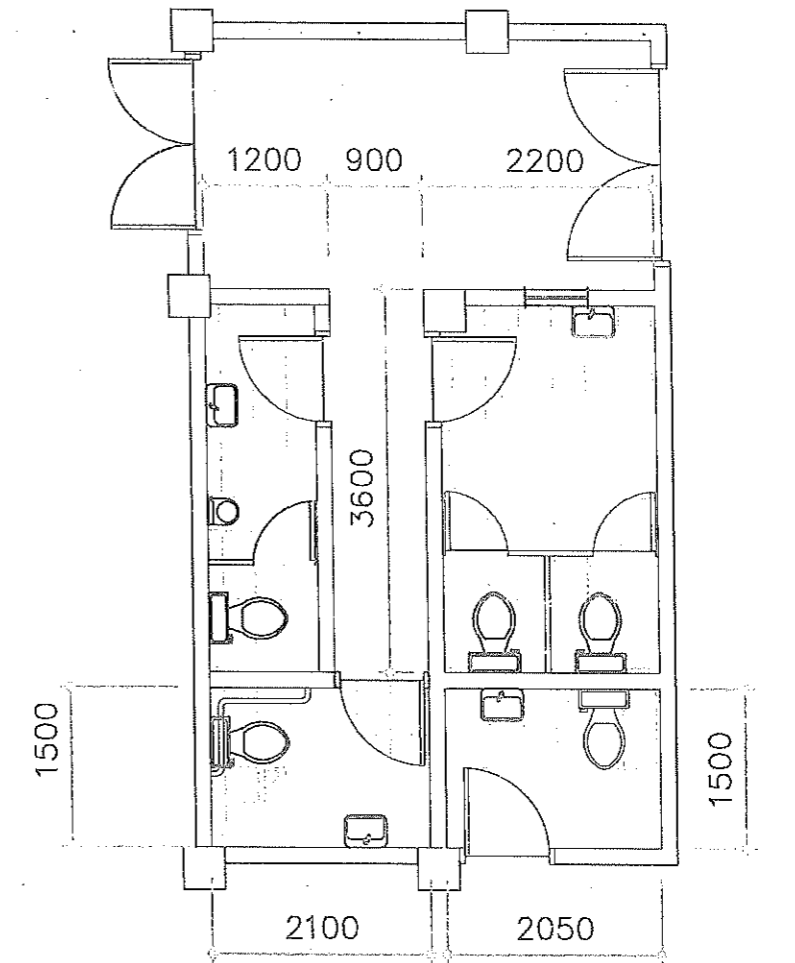
PROJECT TITLE AND LOCATION:

**IMPROVEMENT OF ESCOLASTICA
 ROMERO DISTRICT HOSPITAL AT SAN
 NICOLAS 1ST, LUBAO, PAMPANGA**

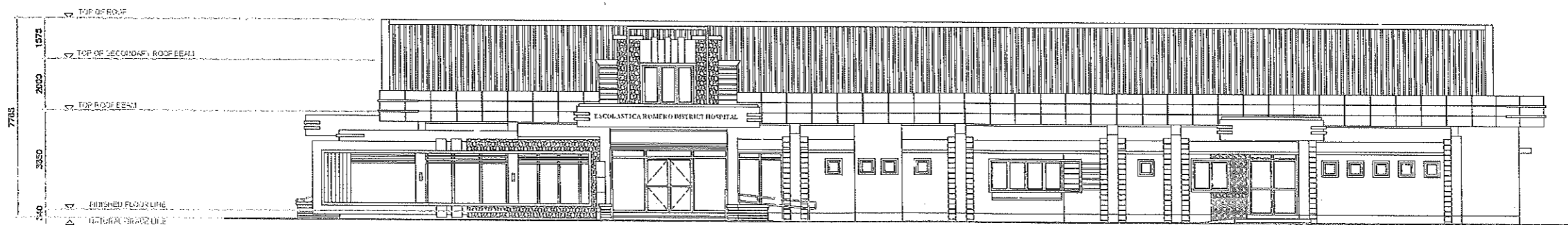
 REPUBLIC OF THE PHILIPPINES PROVINCE OF PAMPANGA PROVINCIAL ENGINEER'S OFFICE CAPITOL COMPOUND, CITY OF SAN FERNANDO	PROJECT TITLE:	PREPARED BY:	CHECKED AND SUBMITTED BY:	VERIFIED AND SUBMITTED BY:	RECOMMENDING APPROVAL:	APPROVED BY:	SHEET CONTENT:	SHEET NO.
	IMPROVEMENT OF ESCOLASTICA ROMERO DISTRICT HOSPITAL LOCATION: SAN NICOLAS 1ST, LUBAO, PAMPANGA	JULIE ANN L. SUNGLAO ENGINEER II EDRALIN M. DANAN ENGINEER II	ESMERALDO T. GULAPA ENGINEER IV	WILFRIDO A. MANALILI ASSISTANT PROVINCIAL ENGINEER	OLIMPIO M. PANJAM PROVINCIAL ENGINEER	Hon. DENNIS G. PINEDA GOVERNOR BY THE AUTHORITY OF THE GOVERNOR: ATTY. CHARLIE G. CHUA PROVINCIAL ADMINISTRATOR	AS SHOWN	8



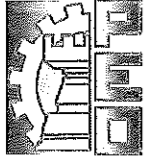
EXISTING FLOOR PLAN
SCALE 1:500m



CR DETAILS (AS PER BUILT)
SCALE 1:70m



EXISTING RIGHT SIDE ELEVATION
SCALE 1:200m

 REPUBLIC OF THE PHILIPPINES PROVINCE OF PAMPANGA PROVINCIAL ENGINEER'S OFFICE CAPITOL COMPOUND, CITY OF SAN FERNANDO	PROJECT TITLE:	PREPARED BY:	CHECKED AND SUBMITTED BY:	VERIFIED AND SUBMITTED BY:	RECOMMENDING APPROVAL:	APPROVED BY:	SHEET CONTENT:	SHEET NO.:
	IMPROVEMENT OF ESCOLASTICA ROMERO DISTRICT HOSPITAL LOCATION: SAN NICOLAS 1ST, LUBAO, PAMPANGA	JULIE ANN L. SUNGLAO ENGINEER II EDRALIN M. DANAN ENGINEER II	ESMERALDO T. GULAPA ENGINEER IV	WILLFREDO A. MANALILI ASSISTANT PROVINCIAL ENGINEER	OLIMPO M. PANGBAN PROVINCIAL ENGINEER	Hon. DENNIS G. PINEDA GOVERNOR BY THE AUTHORITY OF THE GOVERNOR: ATTY. CHARLIE G. CHUA PROVINCIAL ADMINISTRATOR	AS SHOWN	2 8

SCOPE OF WORK (COMFORT ROOMS)

- 1.) P.W.D. CR(1)
 - WIDENING OF FLOOR AREA
 - REPLACEMENT OF TILES ON FLOOR AND WALLS
 - REPLACEMENT OF DOOR AND CEILING
 - REPLACEMENT OF FIXTURES, FAUCET AND GRAB BARS
 - REPAINTING OF WALLS AND CEILING
 - PLACEMENT OF PWD CR SIGNAGE

- 2.) PUBLIC CRs(3), EMERGENCY ROOM CRs(2), AND DOCTOR'S LOUNGE CR(1)
 - REPLACEMENT OF TILES ON FLOOR AND WALLS
 - REPLACEMENT OF DOOR AND CEILING
 - REPLACEMENT OF FIXTURES AND FAUCET
 - REPAINTING OF WALLS AND CEILING
 - PLACEMENT OF CR SIGNAGES

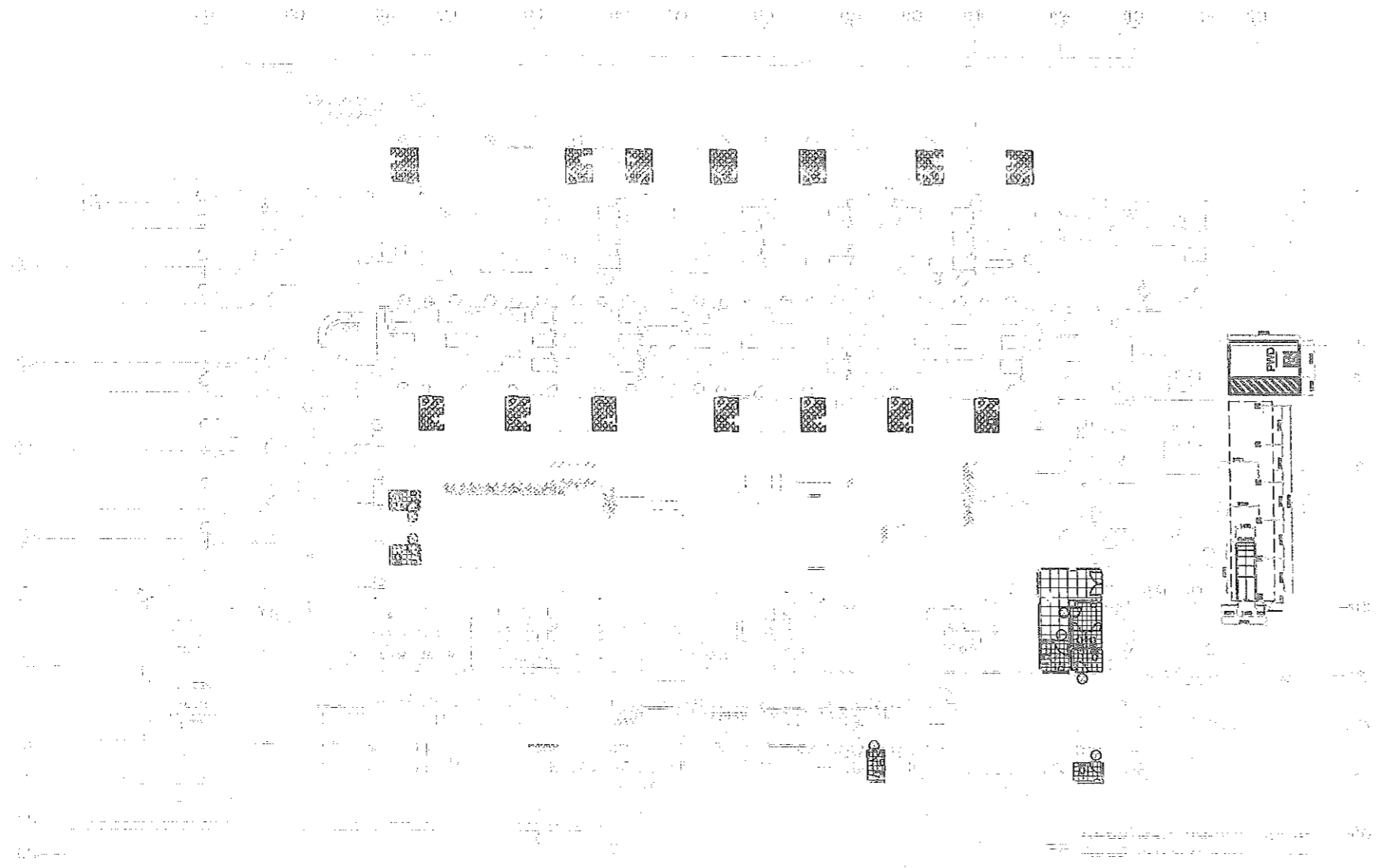
- 3.) PUBLIC WARDS CRs(14)
 - REPLACEMENT OF TILES ON FLOOR, CEILING, AND FAUCET
 - REPAINTING OF WALLS AND CEILING

ROOM 101 AND 105 - REPLACEMENT OF DOOR KNOB AND WATER CLOSET

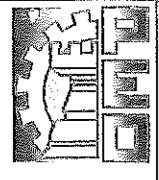



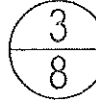
ROOM 103, 104, 106, AND 108 - REPLACEMENT OF DOOR KNOB AND LAVATORY

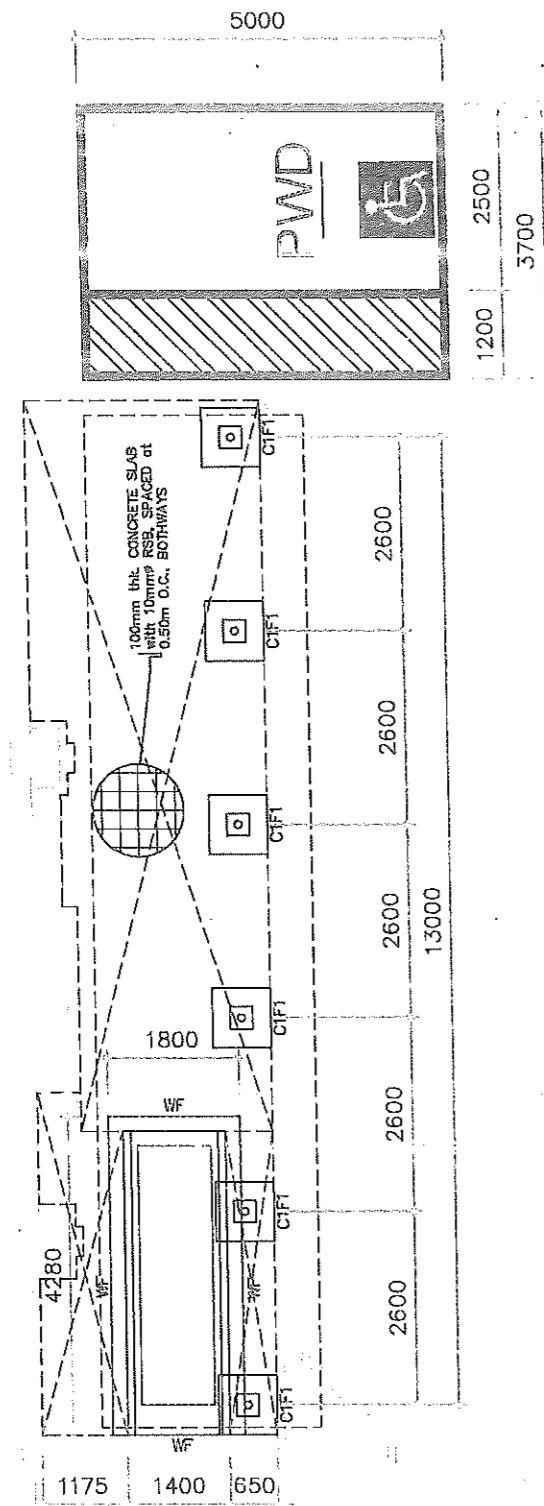
ROOM 107 - REPLACEMENT OF LAVATORY AND WATER CLOSET

- 4.) REPLACEMENT OF FLOOR DRAIN ON ALL COMFORT ROOMS (42)

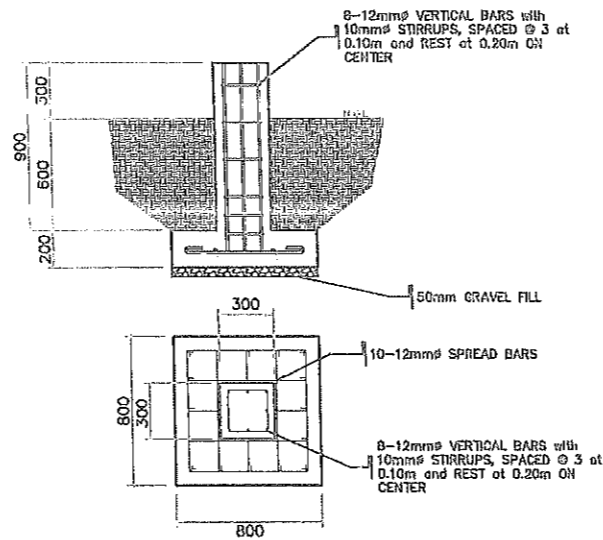


 **FLOOR PLAN**
SCALE 1:400m

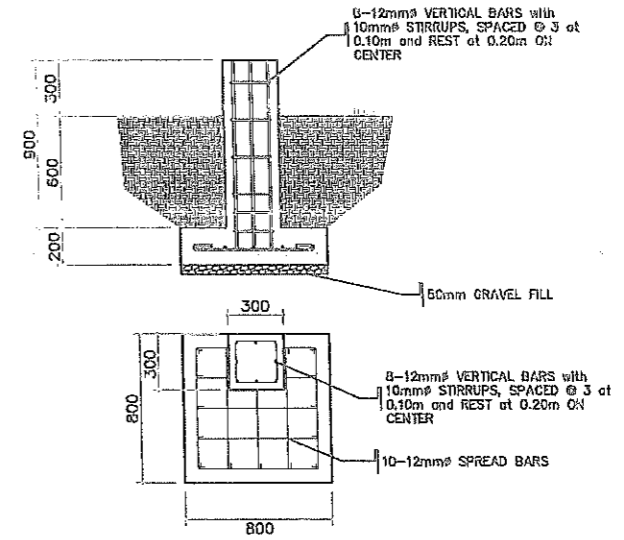
 REPUBLIC OF THE PHILIPPINES PROVINCE OF PAMPANGA PROVINCIAL ENGINEER'S OFFICE CAPITOL COMPOUND, CITY OF SAN FERNANDO	PROJECT TITLE:	PREPARED BY:	CHECKED AND SUBMITTED BY:	VERIFIED AND SUBMITTED BY:	RECOMMENDING APPROVAL:	APPROVED BY:	SHEET CONTENT:	SHEET NO
	IMPROVEMENT OF ESCOLASTICA ROMERO DISTRICT HOSPITAL LOCATION: SAN NICOLAS 1ST, LUBAO, PAMPANGA	JULIE ANN L. SUNGLAO ENGINEER I EDRALIN M. DANAN ENGINEER II	 ESMERALDO T. GULAPA ENGINEER IV	 WILFREDO A. MANALILI ASSISTANT PROVINCIAL ENGINEER	 OLIMPO M. PAIGAN PROVINCIAL ENGINEER	Hon. DENNIS G. PINEDA GOVERNOR BY THE AUTHORITY OF THE GOVERNOR: ATTY. CHARLIE G. CHUA PROVINCIAL ADMINISTRATOR	AS SHOWN	



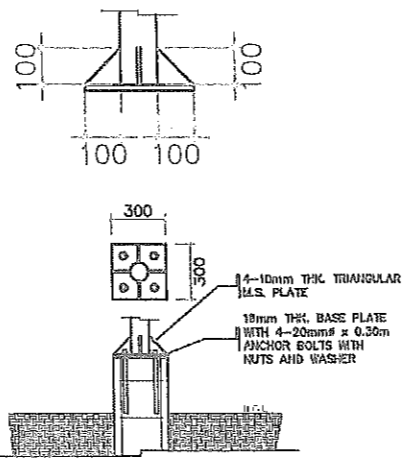
FOUNDATION PLAN
SCALE 1:100m



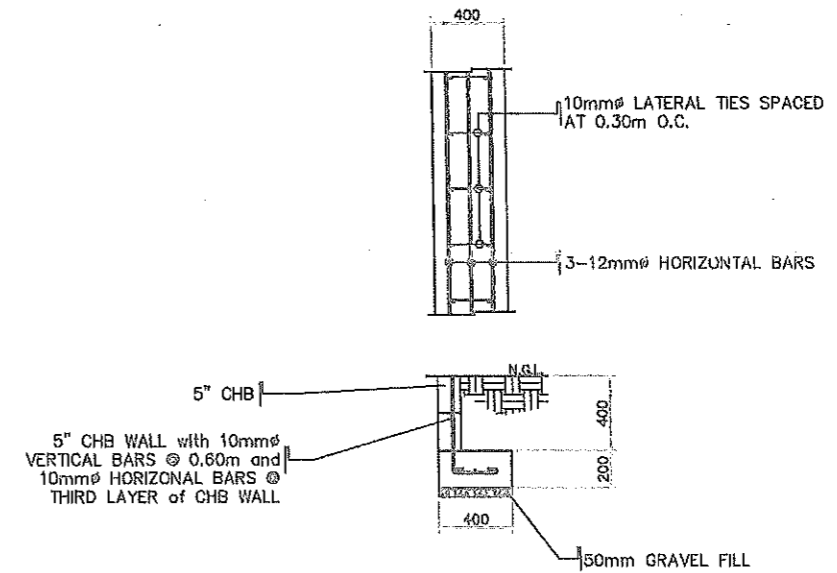
C1F1 DETAILS
SCALE 1:40m



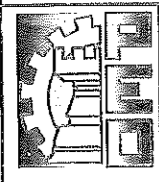
C2F2 DETAILS
SCALE 1:40m



COLUMN-POST DETAILS
SCALE 1:40m



WALL FOOTING DETAILS
SCALE 1:40m



REPUBLIC OF THE PHILIPPINES
PROVINCE OF PAMPANGA
PROVINCIAL ENGINEER'S OFFICE
CAPITOL COMPOUND, CITY OF SAN FERNANDO

PROJECT TITLE:
IMPROVEMENT OF ESCOLASTICA ROMERO DISTRICT HOSPITAL
LOCATION:
SAN NICOLAS 1ST, LUBAO, PAMPANGA

PREPARED BY:
JULIE ANN L. SUNGLAO
ENGINEER I
EDRALIN M. DANAN
ENGINEER II

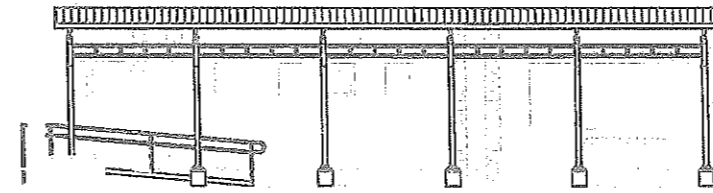
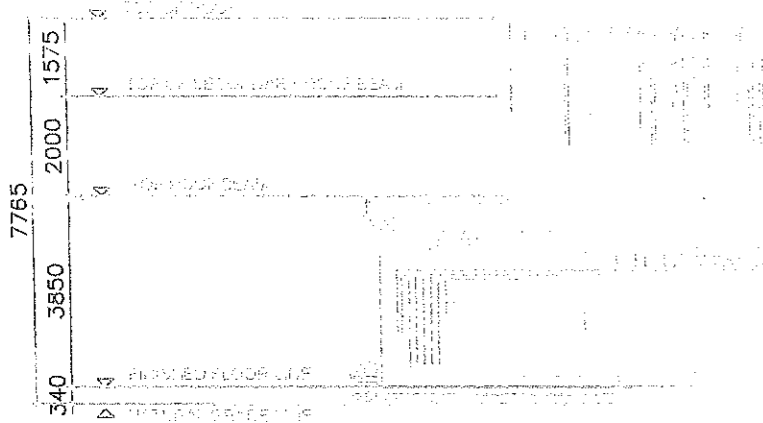
CHECKED AND SUBMITTED BY:
ESMERALDO T. GULAPA
ENGINEER IV

VERIFIED AND SUBMITTED BY:
WILFREDO A. MANALIJI
ASSISTANT PROVINCIAL ENGINEER

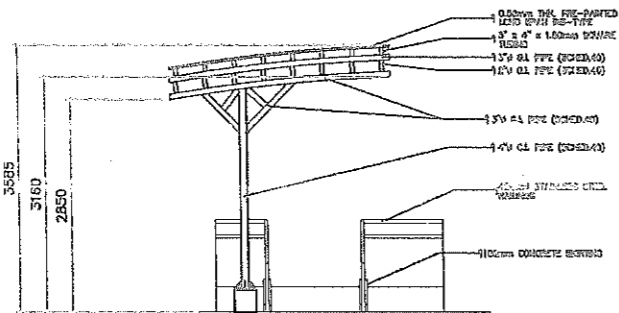
RECOMMENDING APPROVAL:
OLIMPIO M. PANJAN
PROVINCIAL ENGINEER

APPROVED BY:
Hon. DENNIS G. PINEDA
GOVERNOR
BY THE AUTHORITY OF THE GOVERNOR:
ATTY. CHARVIE G. CHUA
PROVINCIAL ADMINISTRATOR

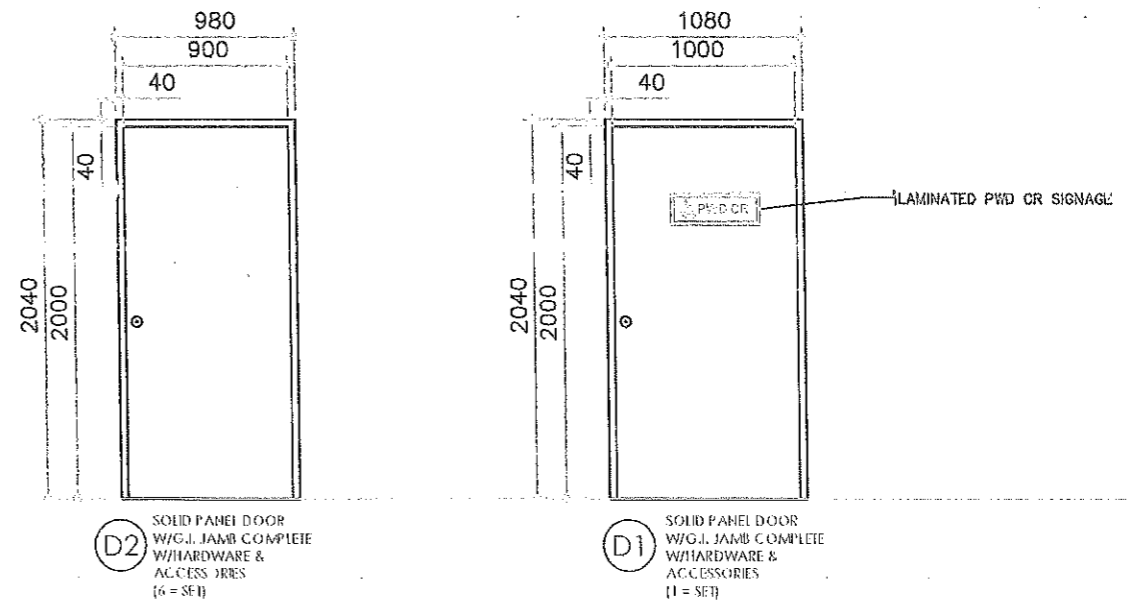
SHEET CONTENT:
AS SHOWN
SHEET NO:
5
8



RIGHT SIDE ELEVATION
SCALE 1:150m

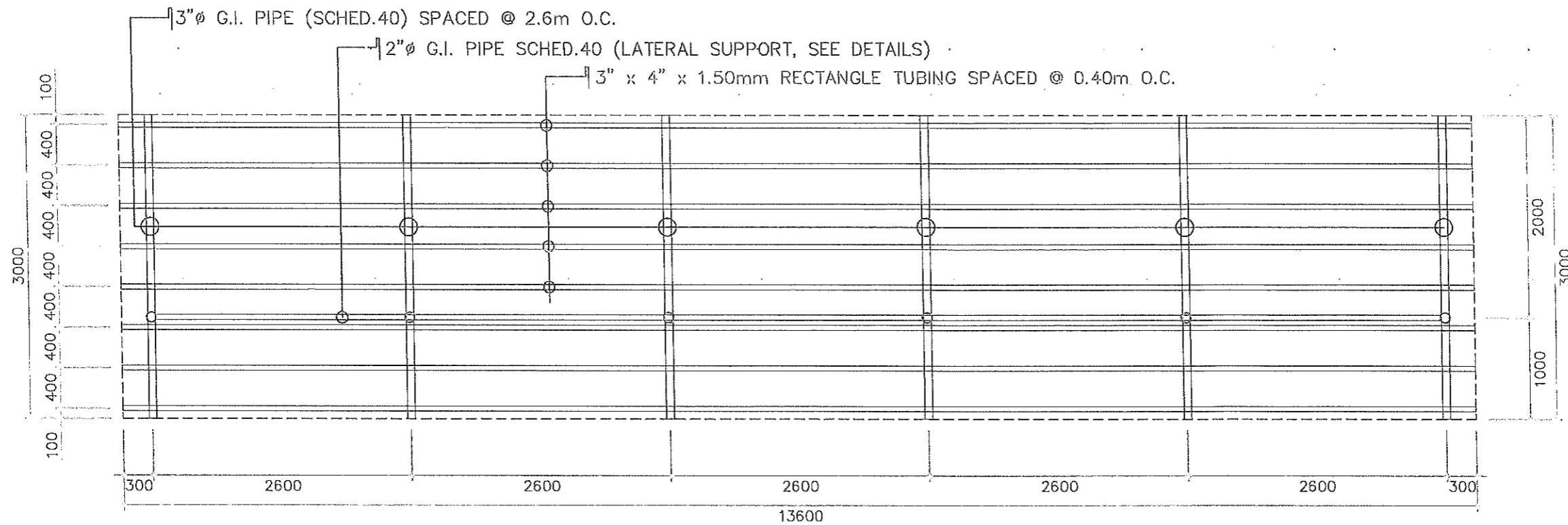


REAR ELEVATION
SCALE 1:100m

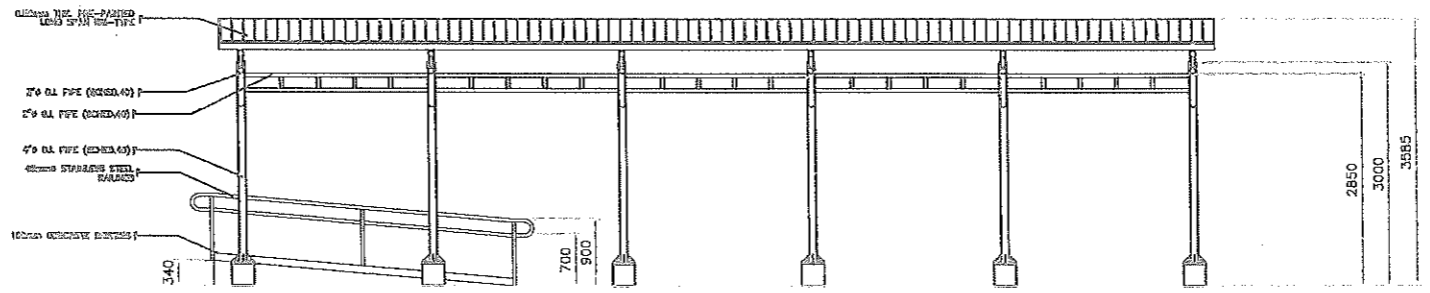


DOOR SCHEDULE
SCALE 1:40m

	REPUBLIC OF THE PHILIPPINES PROVINCE OF PAMPANGA PROVINCIAL ENGINEER'S OFFICE CAPITOL COMPOUND, CITY OF SAN FERNANDO	PROJECT TITLE: IMPROVEMENT OF ESCOLASTICA ROMERO DISTRICT HOSPITAL	PREPARED BY: JULIE ANITA L. SUNGLAO ENGINEER I	CHECKED AND SUBMITTED BY: ESMERALDO T. GULAPA ENGINEER IV	VERIFIED AND SUBMITTED BY: WILFREDO A. MANALILI ASSISTANT PROVINCIAL ENGINEER	RECOMMENDING APPROVAL: OLIMPIO M. PANGAN PROVINCIAL ENGINEER	APPROVED BY: Hon. DENNIS G. PINEDA GOVERNOR BY THE AUTHORITY OF THE GOVERNOR: ATTY. CHARLIE G. CHUA PROVINCIAL ADMINISTRATOR	SHEET CONTENT: AS SHOWN	SHEET NO. 6/8
	LOCATION: SAN NICOLAS 1ST, LUBAO, PAMPANGA	PREPARED BY: EDRALIN M. DANAN ENGINEER II	CHECKED AND SUBMITTED BY: ESMERALDO T. GULAPA ENGINEER IV	VERIFIED AND SUBMITTED BY: WILFREDO A. MANALILI ASSISTANT PROVINCIAL ENGINEER	RECOMMENDING APPROVAL: OLIMPIO M. PANGAN PROVINCIAL ENGINEER	APPROVED BY: Hon. DENNIS G. PINEDA GOVERNOR BY THE AUTHORITY OF THE GOVERNOR: ATTY. CHARLIE G. CHUA PROVINCIAL ADMINISTRATOR	SHEET CONTENT: AS SHOWN	SHEET NO. 6/8	



ROOF FRAMING PLAN
 SCALE 1:200m



RIGHT SIDE ELEVATION
 SCALE 1:100m

 REPUBLIC OF THE PHILIPPINES PROVINCE OF PAMPANGA PROVINCIAL ENGINEER'S OFFICE CAPITOL COMPOUND, CITY OF SAN FERNANDO	PROJECT TITLE:	PREPARED BY:	CHECKED AND SUBMITTED BY:	VERIFIED AND SUBMITTED BY:	RECOMMENDING APPROV. L:	APPROVED BY:	SHEET CONTENT:	SHEET NO.:
	IMPROVEMENT OF ESCOLASTICA ROMERO DISTRICT HOSPITAL LOCATION: SAN NICOLAS 1ST, LUBAO, PAMPANGA	JULIE ANN L. SUNGLAO <small>ENGINEER I</small> EDRALIN M. DANAN <small>ENGINEER II</small>	 ESMERALDO T. GULAPA <small>ENGINEER IV</small>	 WILFREDO A. MANALILI <small>ASSISTANT PROVINCIAL ENGINEER</small>	 OLIMPIO M. PANGAN <small>PROVINCIAL ENGINEER</small>	Hon. DENNIS G. PINEDA <small>GOVERNOR</small> BY THE AUTHORITY OF THE GOVERNOR: ATTY. CHARLIE G. CHUA <small>PROVINCIAL ADMINISTRATOR</small>	AS SHOWN	<div style="border: 1px solid black; border-radius: 50%; width: 30px; height: 30px; display: flex; align-items: center; justify-content: center; margin: 0 auto;"> 7 8 </div>

GENERAL NOTES:

1. ALL ELECTRICAL WORKS SHALL COMPLY IN ACCORDANCE WITH THESE PLANS AND SPECIFICATIONS. THE APPLICABLE PROVISIONS OF THE LATEST EDITION OF THE PHILIPPINE ELECTRICAL CODE (PEC), THE RULES AND REGULATIONS OF THE LOCAL ENFORCING AUTHORITY AND THE REQUIREMENTS OF THE LOCAL POWER COMPANY. THE ELECTRICAL WORKS SHALL BE UNDER IMMEDIATE SUPERVISION OF A DULY REGISTERED ELECTRICAL ENGINEER.

2. THE ELECTRICAL SERVICE POWER IS 1-PHASE, 2-WIRE + 1-GROUND, 230V AC, 60Hz.

3. WIRING METHOD SHALL BE AS FOLLOWS;

- a. FEEDERS AND RISERS - INTERMEDIATE METALLIC CONDUIT
- b. LIGHTING POWER RECEPTACLE - POLYVINYL CHLORIDE CONDUIT BRANCH CKT. & AUXILIARY, SCH. 40.

4. ALL WIRES SHALL BE COPPER AND THERMOPLASTIC INSULATED TYPE "THHN" UNLESS OTHERWISE INDICATED IN THE PLAN. THE MINIMUM SIZE OF WIRE FOR POWER AND LIGHTING CIRCUIT HOMERUN SHALL BE 3.5mm² AND INSULATED FOR 600 VOLTS. SMALLEST RACEWAY SHALL BE 15mmØ TRADE/NORMAL SIZE.

5. ALL OUTLET BOXES SHALL BE GALVANIZED GAGE NO. 16 DEEP TYPE WITH FACTORY KNOCKOUTS.

6. ALL MATERIALS TO BE USED SHALL BE BRAND NEW AND APPROVED TYPE FOR THE PARTICULAR LOCATION AND PURPOSE OF USAGE.

7. GROUNDING SYSTEM SHALL BE PROVIDED TO ALL LIGHTING AND POWER CIRCUIT AS PER PHILIPPINE ELECTRICAL CODE REQUIREMENT.

8. MOUNTING HEIGHT OF WIRING DEVICES SHALL BE AS FOLLOWS;

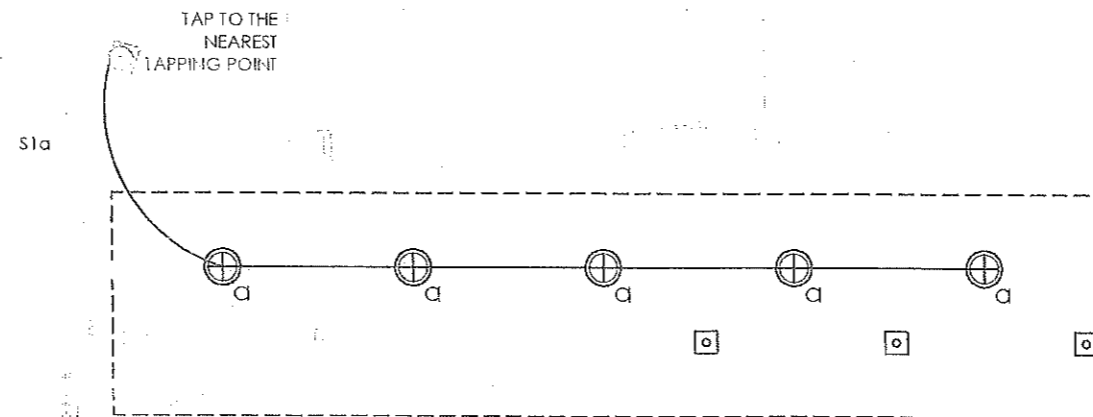
- a. LIGHTING SWITCH - 1.20 m ABOVE FINISHED FLOOR
- b. CONVENIENCE OUTLET - 0.30 m ABOVE FINISHED FLOOR
- c. WALL FAN OUTLET - 1.80 m ABOVE FINISHED FLOOR
- d. PANEL BOARD - 1.80 m ABOVE FINISHED FLOOR

LOAD CALCULATION

LOAD CALCULATION
 (Faint text, mostly illegible)

LEGEND:

	WEATHERPROOF, DUPLEX CONVENIENCE OUTLET
	PANELBOARD
	HOME RUN
	ONE GANG SWITCH
	1 x 12W LED DOWNLIGHT



LIGHTING LAYOUT
 SCALE 1:100m

<p>REPUBLIC OF THE PHILIPPINES PROVINCE OF PAMPANGA PROVINCIAL ENGINEER'S OFFICE CAPITOL COMPOUND, CITY OF SAN FERNANDO</p>	PROJECT TITLE:	PREPARED BY:	CHECKED AND SUBMITTED BY:	VERIFIED AND SUBMITTED BY:	RECOMMENDING APPROVAL:	APPROVED BY:	SHEET CONTENT:	SHEET NO.
	IMPROVEMENT OF ESCOLASTICA ROMERO DISTRICT HOSPITAL	EDRALIN M. DANAN ENGINEER III				Hon. DENNIS G. PINEDA GOVERNOR	AS SHOWN	8
	LOCATION: SAN NICOLAS 1ST, LUBAO, PAMPANGA	MICHAEL T. MONTE MAYOR ENGINEER II	ESMERALDO T. GULAPA ENGINEER IV	WILFREDO A. MANALILI ASSISTANT PROVINCIAL ENGINEER	OLIMPIO M. PANGAN PROVINCIAL ENGINEER	BY THE AUTHORITY OF THE GOVERNOR: ATTY. CHARLIE O. CHUA PROVINCIAL REGISTRAR		8