



Republic of the Philippines
Province of Pampanga
Bids and Awards Committee
Provincial Capitol, City of San Fernando, (P) / (045) 435-5901

JAN 05 2024

RFQ No. 240002

P.R. No. / Date / End User / Purpose:

(23-5017 12/14/2023 Provincial Treasurers Office SUPPLY INSTALLATION OF new glass aluminum Double Swing Door (E.D. Type), Sliding Door, with Fixed Glass Panel and Sliding Window (Small) repairs and installation of new replacement Overhead Door Closer w/ Lockset & Sliding Roller.)

REQUEST FOR QUOTATION

Small Value Procurement

Company Name: _____
Address: _____
Tel. No.: _____

Please quote your lowest price for the requirements listed hereunder subject to the Terms and Conditions stated below and submit to this Office duly signed by you or your representative not later than 4:00 p.m. JAN 10 2024

APPROVED BUDGET FOR
THE CONTRACT (ABC):
PhP 280,650.00

FRANCIS V. MASLOG
VICE-CHAIRPERSON *Pine*
Bids and Awards Committee

TERMS AND CONDITIONS

- All quotations may be typewritten or handwritten, placed in a sealed envelope.
- All quotations shall be valid for one hundred twenty (120) calendar days from the deadline of the submission of the same.
- Any erasures or overwriting shall be valid only if they are signed or initialed by the supplier or its authorized representative.
- Interested suppliers are required to submit their valid current Mayor's Permit, PhilGEPS Registration Number, and Income/BIR Tax Return (for ABCs above P500,000.00) upon submission of quotation. In lieu of the Mayor's Permit and PhilGEPS Registration Number, the PhilGEPS Certificate of Platinum Membership may be submitted. For new businesses, submit the BIR Certificate of Registration and latest quarterly return or percentage tax..

- The applicable rate for late deliveries is one tenth (1/10) of one percent (1%) of the cost of the unperformed portion for everyday of delay.
- The Provincial Government of Pampanga reserves the right to accept or reject any quotation, and to annul the procurement process and reject all quotations at any time prior to contract award, without thereby incurring any liability to the affected supplier/s.
- The PGP also reserves the right to waive any required formality in the proposals received, and select the proposal which it determine to be the most advantageous to the government.

Item No.	Qty	Unit	Item Description	Unit Price	Total Price
	1	Lot	Installation of new glass aluminum Double Swing Door (E.D.Type) a. Overhead door Closer b. 1/4" thick Ordinary glass with frosted sticker and handle c. 1 3/4" x 4" x 6mtrs. length Tubular - Aluminum frame d. E.D. Top & Bottom - Aluminum frame e. E.D. Stile with groove - Aluminum frame f. Snap on base with Cover - Aluminum frame g. Split tube #4 - Aluminum frame h. Lockset i. Sealant (See attached Technical Drawing no. 1) Scope of works: 1. Dismantle of existing swing glass door and Install of new 1/4" thick Ordinary swing glass door with frosted sticker and E.D. type aluminum frame with handle, and 2. Alignment & Sealant.		

Pine

	Unit	Item Description	Unit Price	Total Price
1	Lot	<p>Installation of new Sliding Glass Door, with Fixed Glass Panel and Sliding Window (Small)</p> <p>a. Pre-cut 1/4" thk. Reflective clear glass (1-way) - cut to size (approx. 22" width x 75" height)</p> <p>b. Double Jamb #3" x 6m. length - Aluminum frame</p> <p>c. Double Head #3" x 6m. length - Aluminum frame</p> <p>d. Double Sill #3" x 6m. length - Aluminum frame</p> <p>e. Interlocker, Lock Style and Center Lock</p> <p>f. Top & Bottom Rail - 3/4" x 1 3/4" x 6m. length - Aluminum</p> <p>g. Jamb Vinyl</p> <p>h. Panel Roller - 1" dia. with bearing</p> <p>i. Handle</p> <p>(See attached Technical Drawing no. 2)</p> <p>Scope of Works:</p> <p>1. Dismantling of temporary clear plastic cover and install of new 1/4" Ordinary sliding glass door with frosted sticker, fixed panel glass with aluminum frame and small sliding window with handle and lockset for opening and receiving.</p> <p>2. Alignment & Sealant</p>		
1	Lot	<p>Installation of new Fixed panel 1/4" thick ordinary clear glass with 1" x 3" tubular frame with snap on base with cover</p> <p>a. 1/4" Ordinary glass with frosted sticker and handle</p> <p>b. 1" x 3" x 6 mtrs. length Tubular - Aluminum frame</p> <p>c. Snap on base with cover - Aluminum frame</p> <p>d. Sealant</p> <p>(See attached Technical Drawing no. 3)</p> <p>Scope of works:</p> <p>1. Installation of new Fixed 1/4" thick ordinary clear glass with 1" x 3" tubular frame & snap on base with cover</p> <p>2. Alignment & Sealant</p>		
		Repair and installation of new replacement of Overhead Door Closer with Lockset and Sliding Roller		
4	pcs	a. Overhead door closer		
3	pcs	b. WF lockset		
6	pcs.	c. Flushbolt		
6	pcs	d. SD Roller (double)		
3	pcs	e. Flush lock (#11 & #12)		
8	pcs	<p>f. Sealant</p> <p>Scope of works:</p> <p>1. Remove & dismantle of spoiled door accessories and supply, repair and installation of new Hydraulic Door locksets, flusbolts, flushlock and sliding roller.</p> <p>AFTER SALES SERVICE:</p> <p>1. One (1) year warranty on workmanship</p> <p>2. Atleast six (6) months warranty of all parts</p> <p>3. Replacement of defective item/s within 24 hours upon notification of the end-user</p> <p>4. The procuring entity reserves the right to conduct product testing inspection if necessary to determine the fitness of the item/s being offered by prospective supplier</p> <p>5. With service facility in the locality</p> <p>SCHEDULE OF REQUIREMENTS:</p> <p>Within seven (7) days upon receipt of PO/NOA.</p>		
Total Lot Price				

Note: The winning supplier shall submit a duly signed and notarized Omnibus Sworn Statement prior to notice of award.

pen

JAN 05 2024

~~BIDS AWARDS COMMITTEE:~~

Having carefully read and accepted your Terms and Conditions, including the technical specifications, I/We offer to supply/deliver the item/s as noted above.

Supplier's authorized representative signature over printed name

BAC CANVASSER

Designation: _____

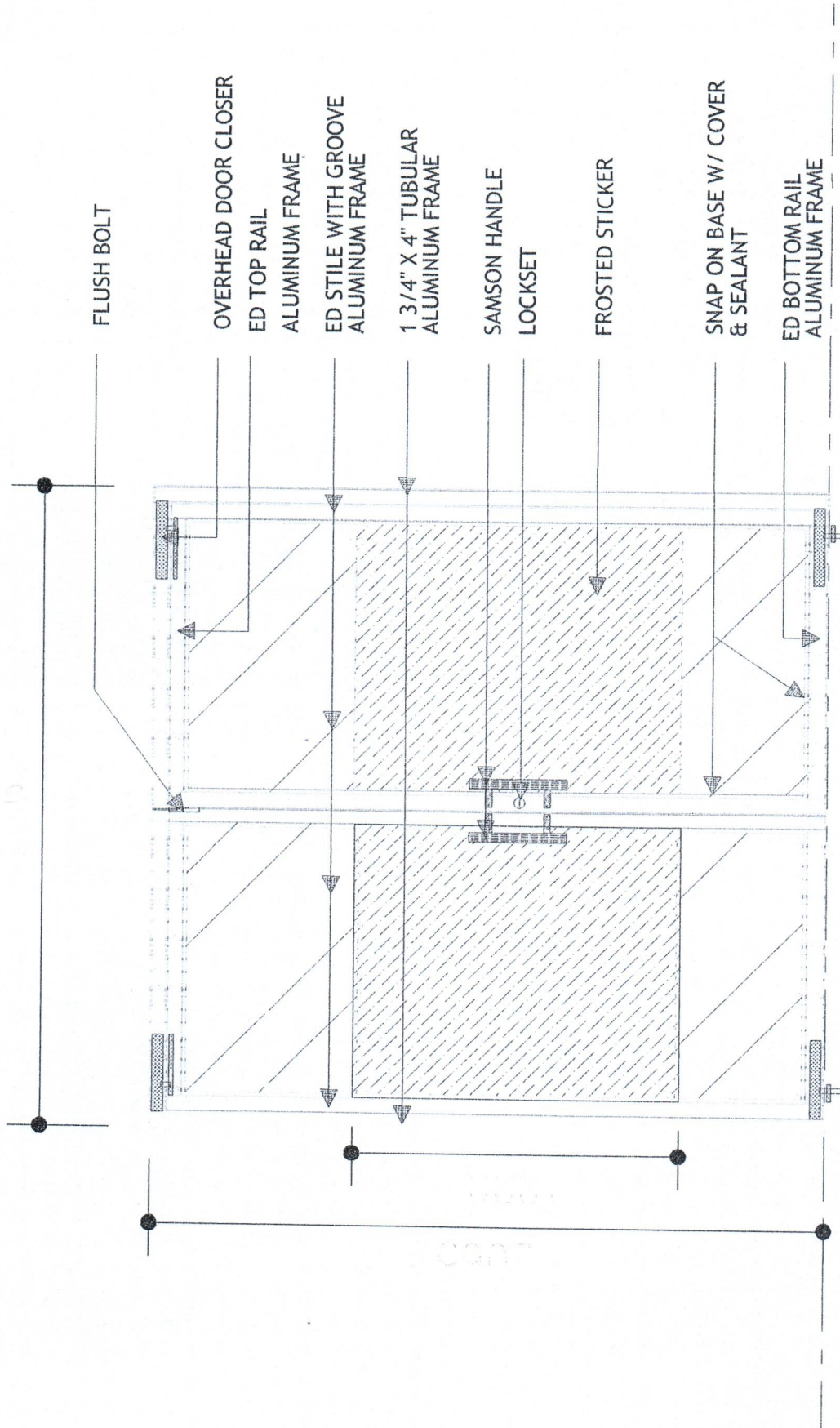
Contact No.: _____

Email Address.: _____

Jaq

A


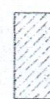
pen



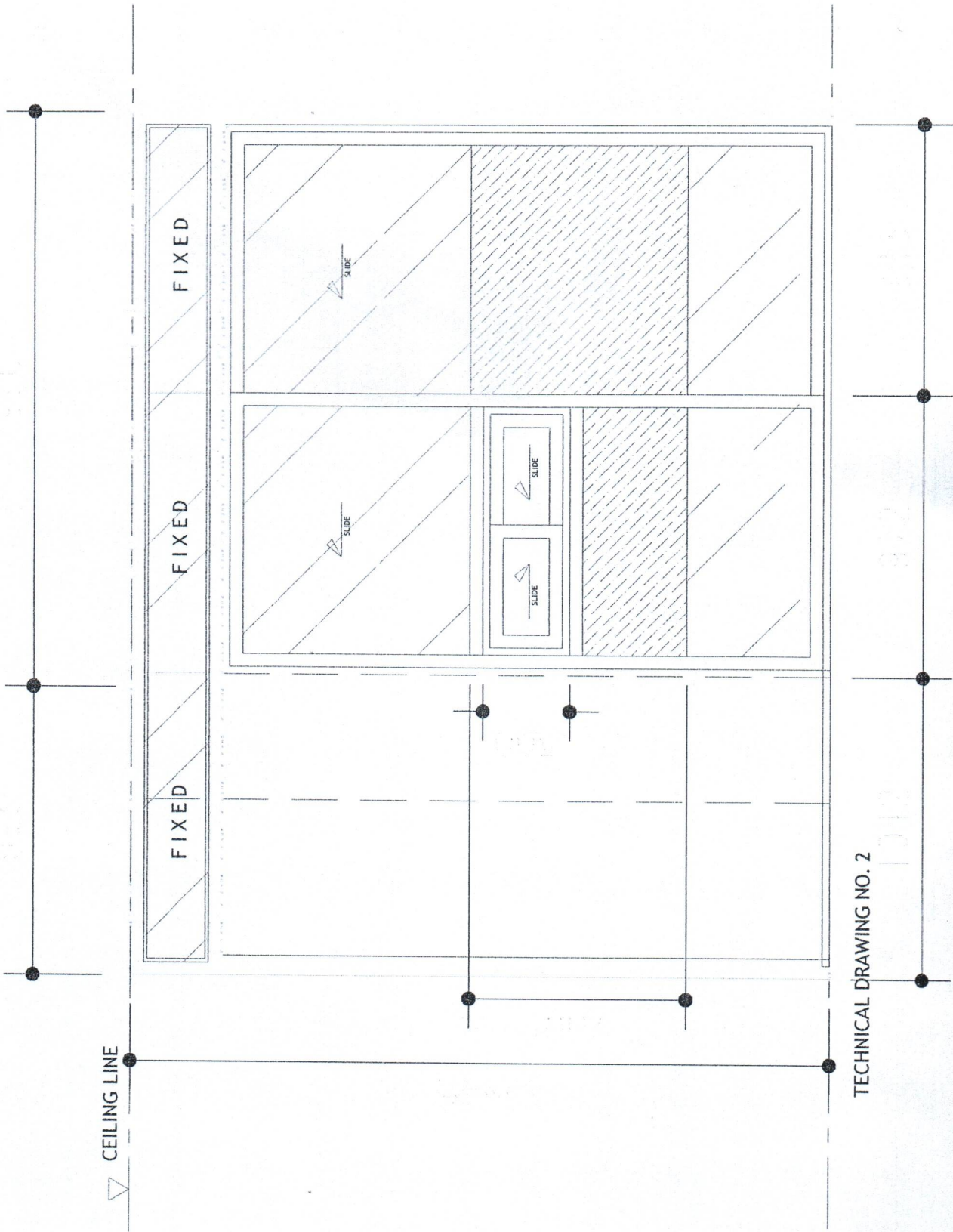
TECHNICAL DRAWING NO. 1

TECHNICAL DRAWING NO. 2

P T O OFFICE HALLWAY

- LEGEND:
-  1/4" THICK - ORDINARY GLASS (CLEAR)
 -  FROSTED STICKER

pm



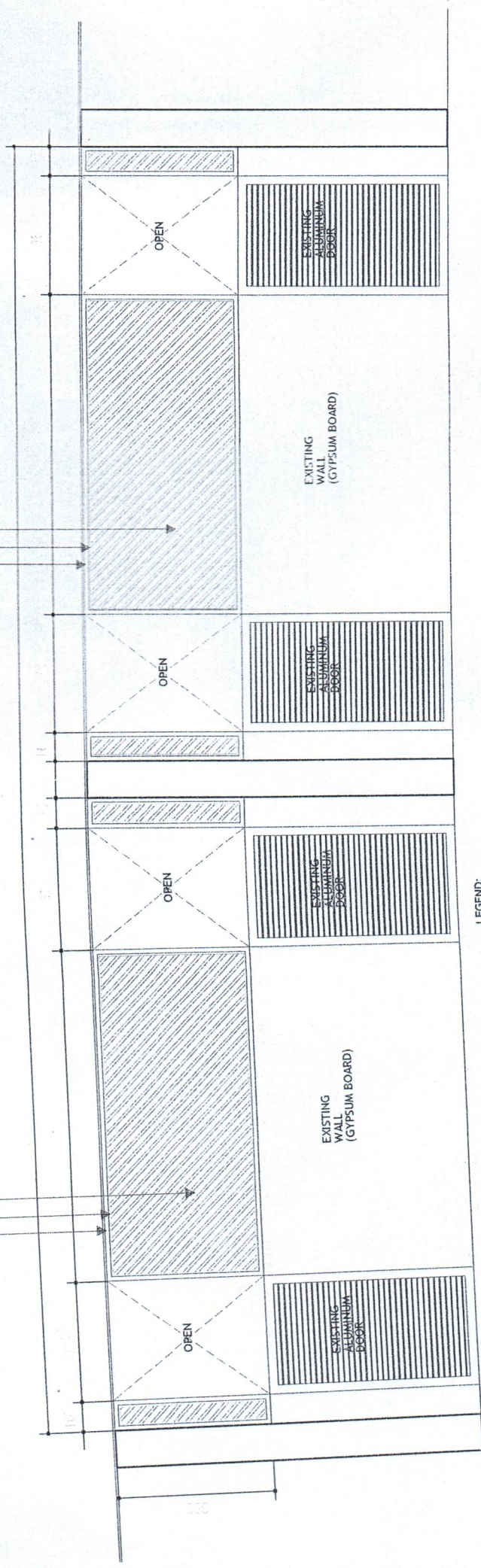
- LEGEND:
- 1/4" THICK - ORDINARY GLASS (CLEAR)
 - FROSTED STICKER

P T O OFFICE ENTRANCE

Handwritten signature

1" X 3" THK. ALUMINUM TUBULAR FRAME WITH SEALANT
 SNAP ON BASED
 1/4" THK ORDINARY CLEAR GLASS
 FIXED GLASS

1" X 3" THK. ALUMINUM TUBULAR FRAME WITH SEALANT
 SNAP ON BASED
 1/4" THK ORDINARY CLEAR GLASS
 FIXED GLASS



LEGEND:
 1/4" THICK - ORDINARY CLEAR GLASS

TECHNICAL DRAWING NO. 3

PTO - WALL FIXED GLASS PARTITION

pen